



Greenwich Street-Adjacent Quick Service Restaurant For Lease

155 CHAMBERS STREET

North Side between West Broadway and Greenwich Street

Vented Restaurant Space For Lease High Traffic | Steps to Subway

Ground – 900 SF

Basement– 800 SF

Ceiling Heights

15-Feet Ground

Term – Negotiable

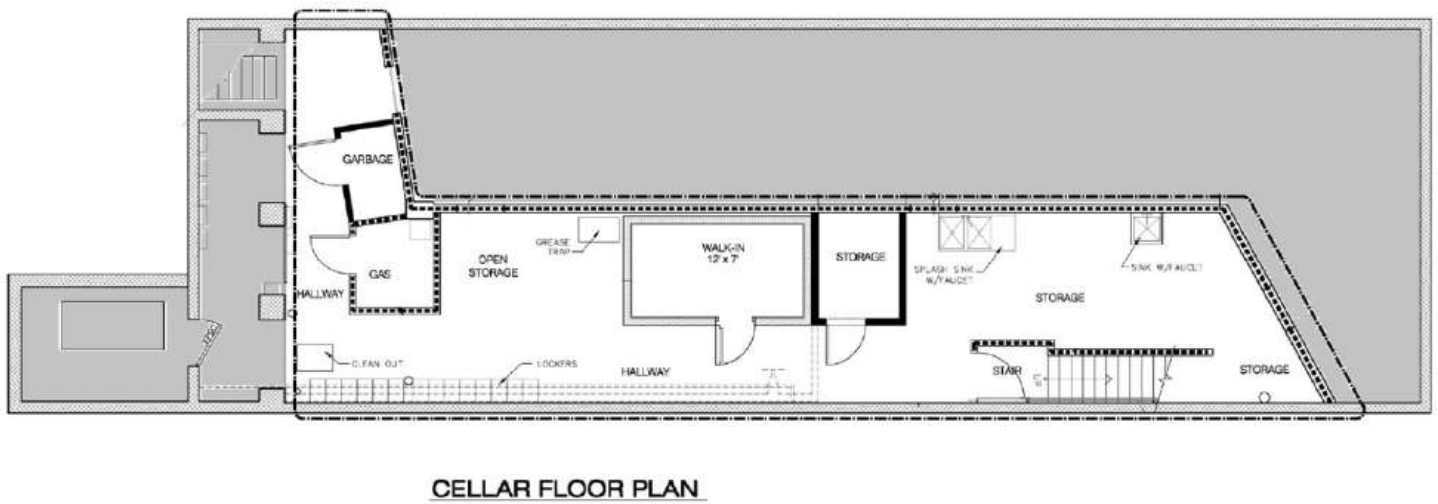
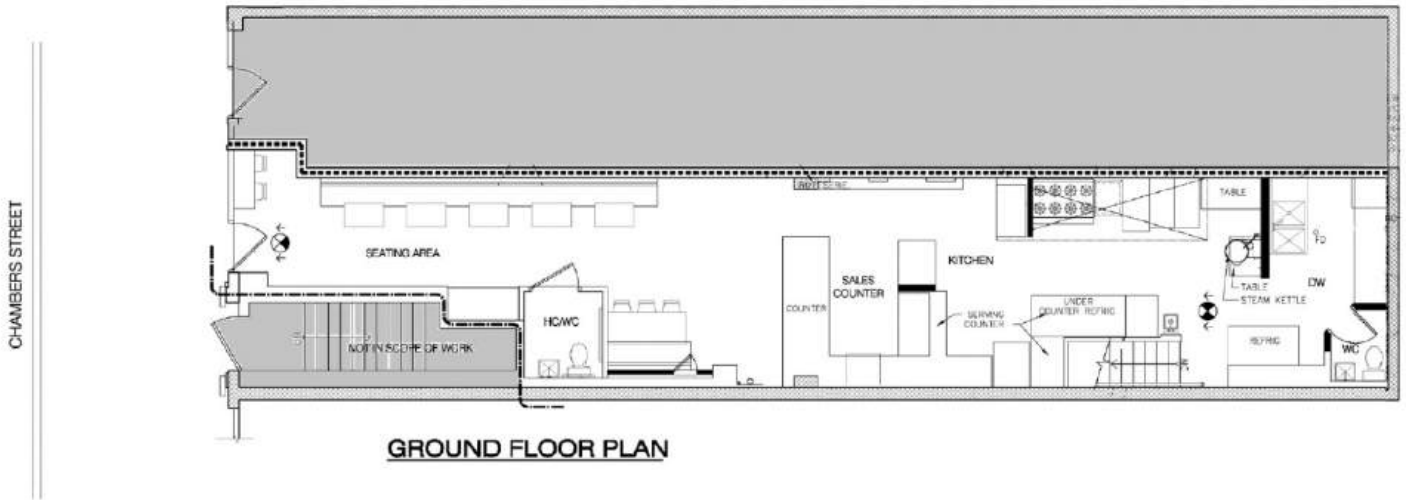
Possession - Immediate

- VENTED COMMERCIAL KITCHEN
- NATURAL GAS / HVAC
- KITCHEN EQUIPMENT IN PLACE
- PRIME TRIBECA LOCATION





Rental Plan—Sample Layout





155 CHAMBERS
STREET

Please Contact:
Peter Weisman
212.300.3077
peter@weismannyc.com