

5353 WAYZATA OFFICE CENTER

5353 WAYZATA BOULEVARD, ST. LOUIS PARK, MN 55416



PROPERTY DESCRIPTION

- Southwest quadrant of Highways 100/I-394 and adjacent to The Shops at West End
- Sheltered Bus Stop On-Site
- Park N' Ride
- Foodsby - food delivery service for the building
- Convenient lodging for your out of town clients and consultants; Hilton Homewood Suites next door
- Associated Bank is anchor tenant
- Web link: <https://buildout.com/website/5353Wayzata-lease>

AREA AMENITIES include over twelve restaurants within walking distance including CRAVE; The Local; The Loop; Raku Sushi & Lounge; Rojo Mexican Grill; Yard house; Jimmy John's; and more Four Hotels: SpringHill Suites, DoubleTree; TownHill Suites and Hilton Homewood Cub Foods/Liquor adjacent to property. Showplace Icon Theatres Costco; Anthropologie; Evereve; Roosters, solidcore and more...

PROPERTY HIGHLIGHTS

- Suite 201 - 991 SF
- Suite 302 - 2,088 SF
- Suite 310 - 1,627 SF (can be combined)
- Suite 350 - 4,035 SF (can be subdivided and/or combined)
- Suite 503 - 907 SF (available 7/1/25 - possibly sooner)
- Suite 505 - 10,196 SF (can be subdivided - available 7/1/25 - possibly sooner)

OFFERING SUMMARY

Lease Rate:	\$14.00 - 16.00 SF/yr (NNN)
Available SF:	907 - 10,196 SF
2024 Tax and Ops:	\$14.39 SF
Building Size:	112,304 SF
Year Built:	1979

BARRY BIRNBERG

952.820.1673

barry.birnberg@northcocommercial.com

The information above has been obtained from services we believe to be reliable, however, we accept no responsibility for its correctness.

5353 WAYZATA OFFICE CENTER
5353 WAYZATA BOULEVARD, ST. LOUIS PARK, MN 55416



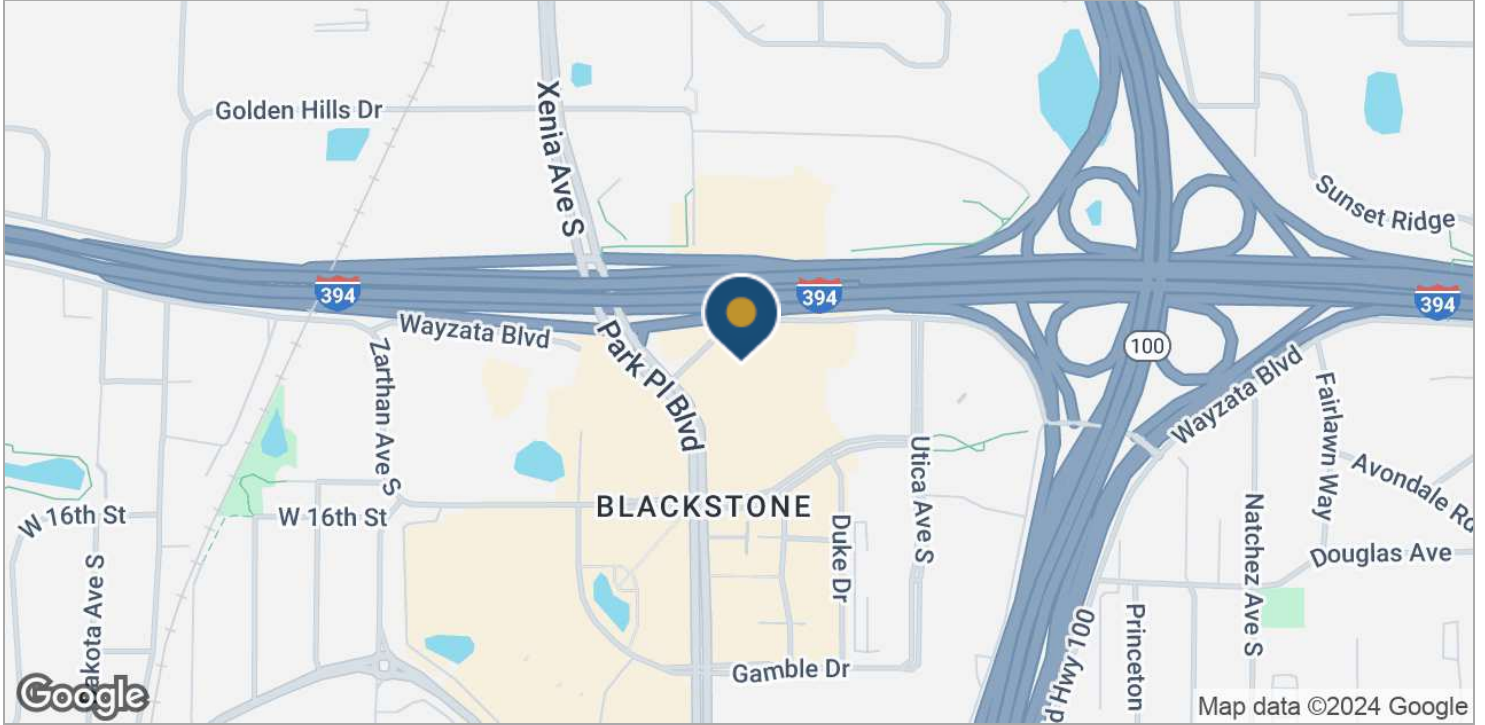
BARRY BIRNBERG

952.820.1673

barry.birnberg@northcocommercial.com

The information above has been obtained from services we believe to be reliable, however, we accept no responsibility for its correctness.

5353 WAYZATA OFFICE CENTER 5353 WAYZATA BOULEVARD, ST. LOUIS PARK, MN 55416



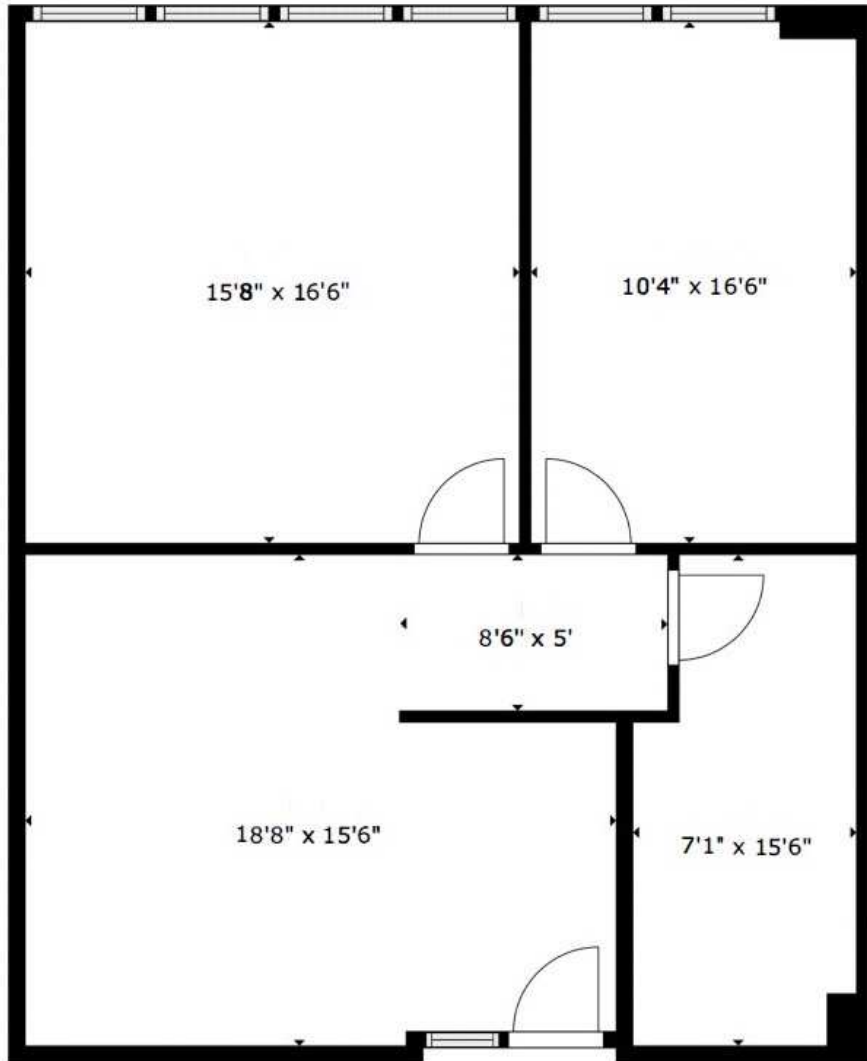
BARRY BIRNBERG

952.820.1673

barry.birnberg@northcocommercial.com

The information above has been obtained from services we believe to be reliable, however, we accept no responsibility for its correctness.

5353 WAYZATA OFFICE CENTER
5353 WAYZATA BOULEVARD, ST. LOUIS PARK, MN 55416



Suite 201
991 SF

SIZES AND DIMENSIONS ARE APPROXIMATE, ACTUAL MAY VARY.



(NOT TO SCALE)

BARRY BIRNBERG

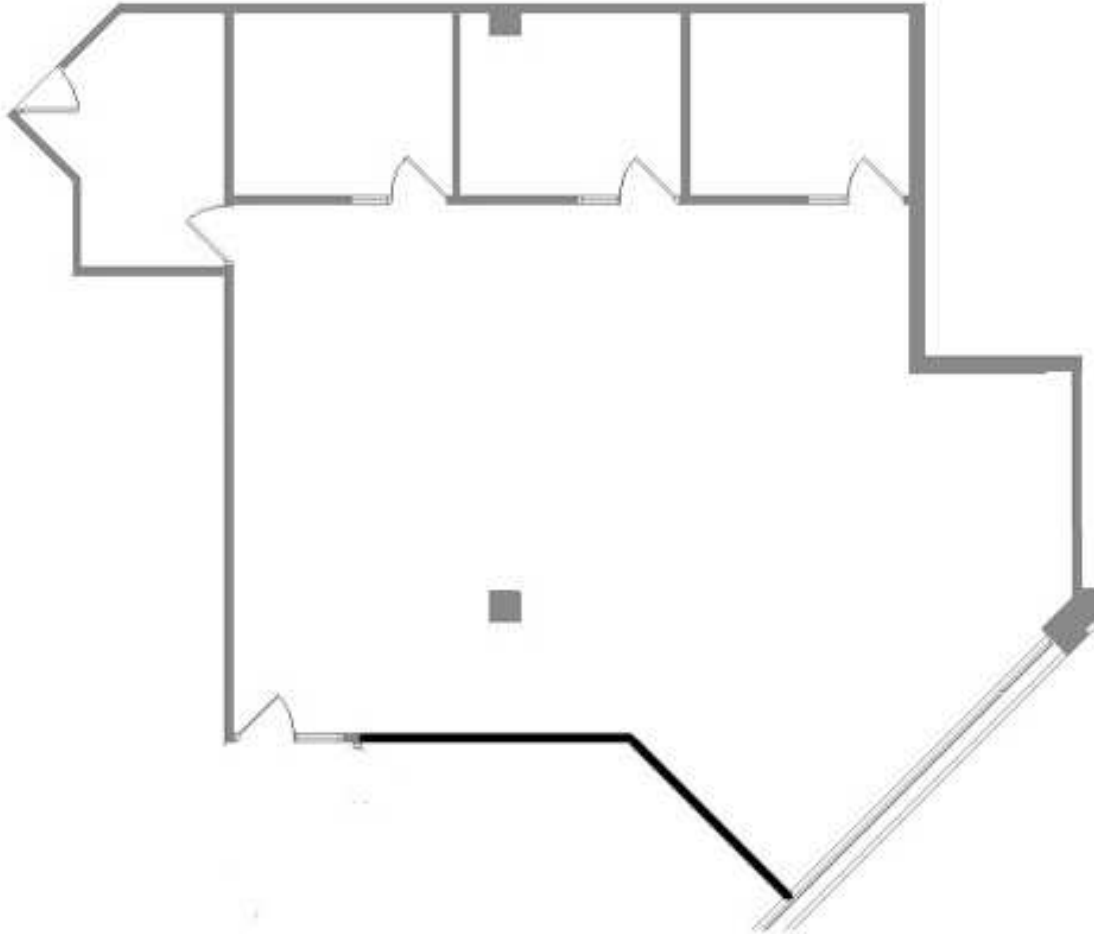
952.820.1673

barry.birnberg@northcocommercial.com

SUITE 201 - 991 SF

The information above has been obtained from services we believe to be reliable, however, we accept no responsibility for its correctness.

5353 WAYZATA OFFICE CENTER
5353 WAYZATA BOULEVARD, ST. LOUIS PARK, MN 55416



Suite 302
2,088 SF

(NOT TO SCALE)

BARRY BIRNBERG

952.820.1673

barry.birnberg@northcocommercial.com

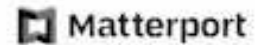
SUITE 302 - 2,088 SF

The information above has been obtained from services we believe to be reliable, however, we accept no responsibility for its correctness.

5353 WAYZATA OFFICE CENTER
5353 WAYZATA BOULEVARD, ST. LOUIS PARK, MN 55416



SIZE AND DIMENSIONS ARE APPROXIMATE. ACTUAL MAY VARY.



Suite 310
1,627 SF

(NOT TO SCALE)

BARRY BIRNBERG

952.820.1673

barry.birnberg@northcocommercial.com

SUITE 310 - 1,627 SF

The information above has been obtained from services we believe to be reliable, however, we accept no responsibility for its correctness.

5353 WAYZATA OFFICE CENTER
5353 WAYZATA BOULEVARD, ST. LOUIS PARK, MN 55416



SIZES AND DIMENSIONS ARE APPROXIMATE, ACTUAL MAY VARY

Suite 350
4,035 RSF



KEY PLAN
LEVEL THREE

1 FLOOR PLAN NAME
Floor Plan Information

(NOT TO SCALE)

BARRY BIRNBERG

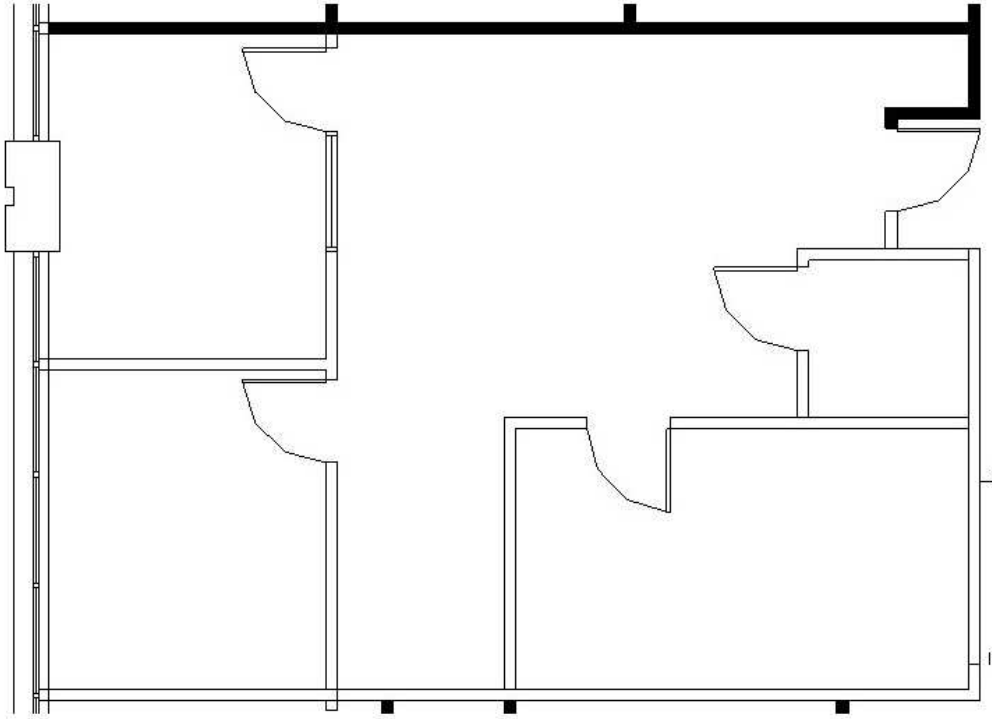
952.820.1673

barry.birnberg@northcocommercial.com

SUITE 350 - 4,035 SF

The information above has been obtained from services we believe to be reliable, however, we accept no responsibility for its correctness.

5353 WAYZATA OFFICE CENTER
5353 WAYZATA BOULEVARD, ST. LOUIS PARK, MN 55416



Suite 503
907 SF



1 FLOOR PLAN NAME
Floor Plan Information

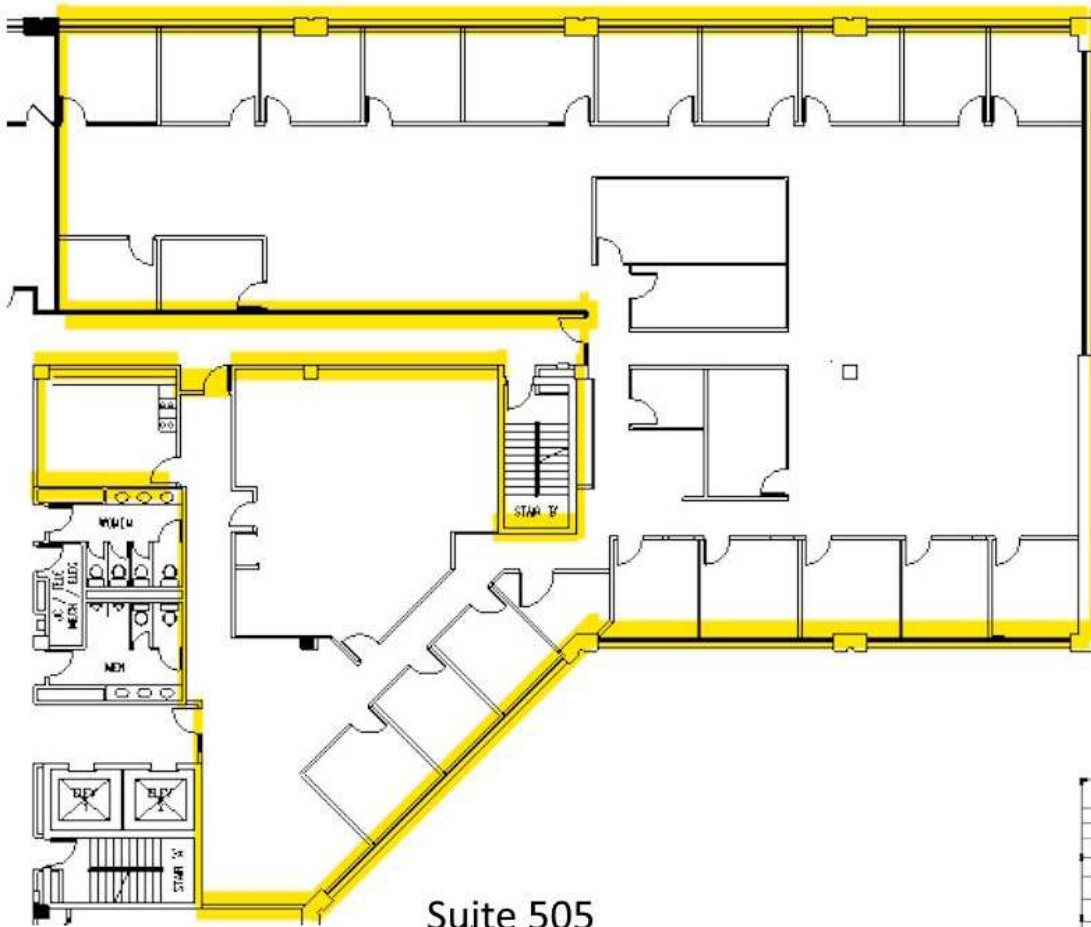
(NOT TO SCALE)

BARRY BIRNBERG
952.820.1673
barry.birnberg@northcocommercial.com

SUITE 503 - 907 SF

The information above has been obtained from services we believe to be reliable, however, we accept no responsibility for its correctness.

5353 WAYZATA OFFICE CENTER
5353 WAYZATA BOULEVARD, ST. LOUIS PARK, MN 55416



Suite 505
10,196 SF



1 FLOOR PLAN NAME
Floor Plan Information

(NOT TO SCALE)

BARRY BIRNBERG
952.820.1673
barry.birnberg@northcocommercial.com

SUITE 505 - 10,196 SF

The information above has been obtained from services we believe to be reliable, however, we accept no responsibility for its correctness.