

FOR LEASE

5,747 SF | \$2.25/SF/MO. NNN

Old Mill District Office Space

450 SW Powerhouse Dr., Suite 429, Bend, OR 97702



SPECTACULAR MOUNTAIN VIEWS



Bruce Churchill, Principal Broker

600 SW Columbia St., Ste. 6100 | Bend, OR 97702

541.383.2444 | www.CompassCommercial.com

COMPASS
COMMERCIAL

REAL ESTATE SERVICES

FOR LEASE

\$2.25/SF/MO. NNN

Old Mill District Office Space

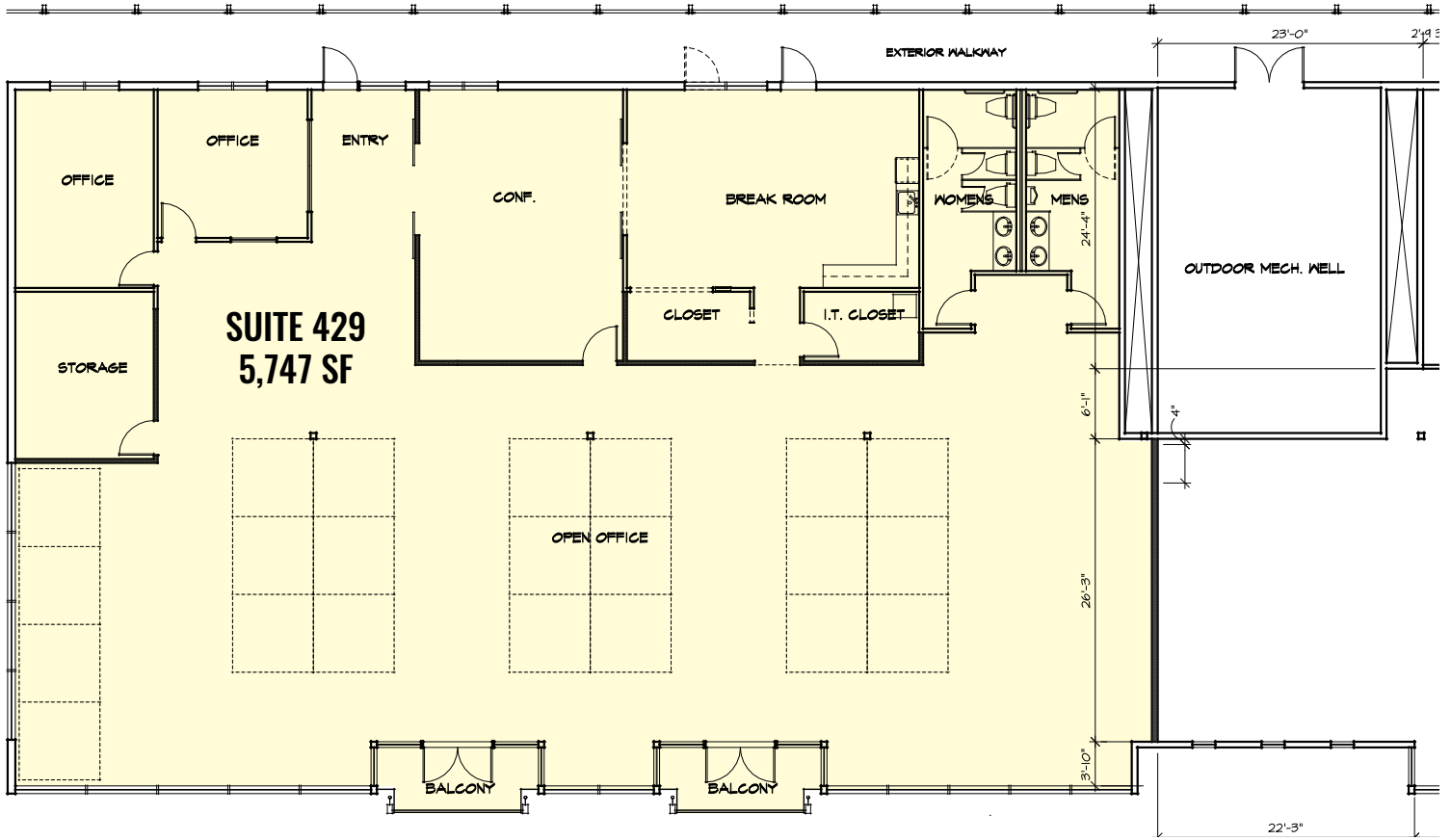
PROPERTY DETAILS

Suite 429:	5,747 SF
Lease Rate:	\$2.25/SF/Mo. NNN
CAMs:	Est. at \$0.93/SF/Mo.
Bldg. Size:	26,240 SF
Year Built:	2000
Zoning:	Mixed Riverfront (MR)
Parking:	Ample onsite spaces
Date Avail.:	October 2023

HIGHLIGHTS

- In the Old Mill District adjacent to the Deschutes River with easy access to the river trail
- Across from the iconic Powerhouse/REI building
- Lots of natural light with outstanding river and mountain views
- Reception area, two private offices and huge open office area
- Large beautifully appointed conference/training room
- Huge breakroom with kitchen area and bar
- Two in-suite restrooms
- Two shared balconies facing the river and mountains
- Storage and IT closets





FOR LEASE

Old Mill District Office | 450 SW Powerhouse Dr., Bend, OR 97702



Broker is licensed in the state of Oregon. This information has been furnished from sources we deem reliable, but for which we assume no liability. This is an exclusive listing. The information contained herein is given in confidence with the understanding that all negotiations pertaining to this property be handled through Compass Commercial Real Estate Services. All measurements are approximate.



Bruce Churchill
Principal Broker
Cell 541.280.7560
bchurchill@compasscommercial.com

COMPASS
COMMERCIAL

REAL ESTATE
SERVICES