

Fifth & Palm Office Complex

244 Fifth Avenue, Indialantic, FL 32903

High Exposure / Walking Distance to Beach / Centrally Located



OFFERING SUMMARY

Available SF: 3,374 SF

Lease Rate: \$13.00 SF/yr (NNN)

Acreage: 0.92 Acres

Facility SF: 21,941 SF

Zoning: Town of Indialantic
Commercial (C)

PROPERTY OVERVIEW

Unit 244: 3,374 SF 2nd Floor Unit. 6 Private Rooms, Conference, Break Area
3 Restrooms. Drop Ceiling Throughout. Lots of Windows/Sunlight
Traffic Count est. 20,500 VPD on Fifth Avenue
Ample Parking with 45 Common Paved/Striped Spaces
Est. \$2.70 PSF CAM

LOCATION OVERVIEW

Located in the heart of Indialantic approximately halfway between the Atlantic Ocean and the Indian River Lagoon. Subject Property has frontage on Fifth Avenue which is a direct connector between Highway A1A, Riverside Drive, and the Melbourne Causeway. Surrounding employers include Indialantic Elementary, Hoover Middle School, and Village Market to name a few. Make this the future home for your business today!

Zach Ullian, SIOR

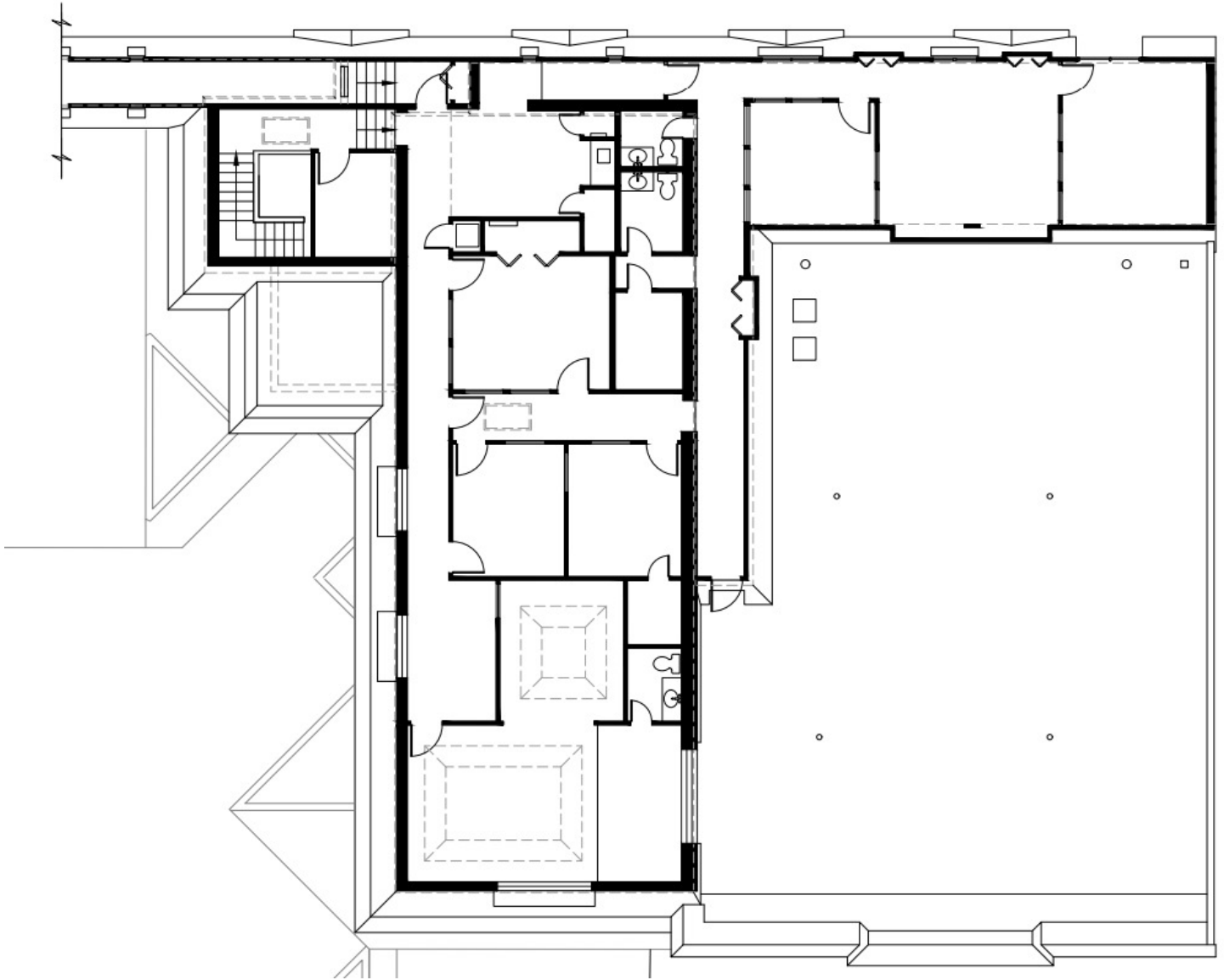
Broker Associate
Cell: 321.750.3439
zach@ullianrealty.com



Fifth & Palm Office Complex

244 Fifth Avenue, Indialantic, FL 32903

Unit 244 Floor Plan (3,374 SF)



Zach Ullian, SIOR

Broker Associate

Cell: 321.750.3439

zach@ullianrealty.com

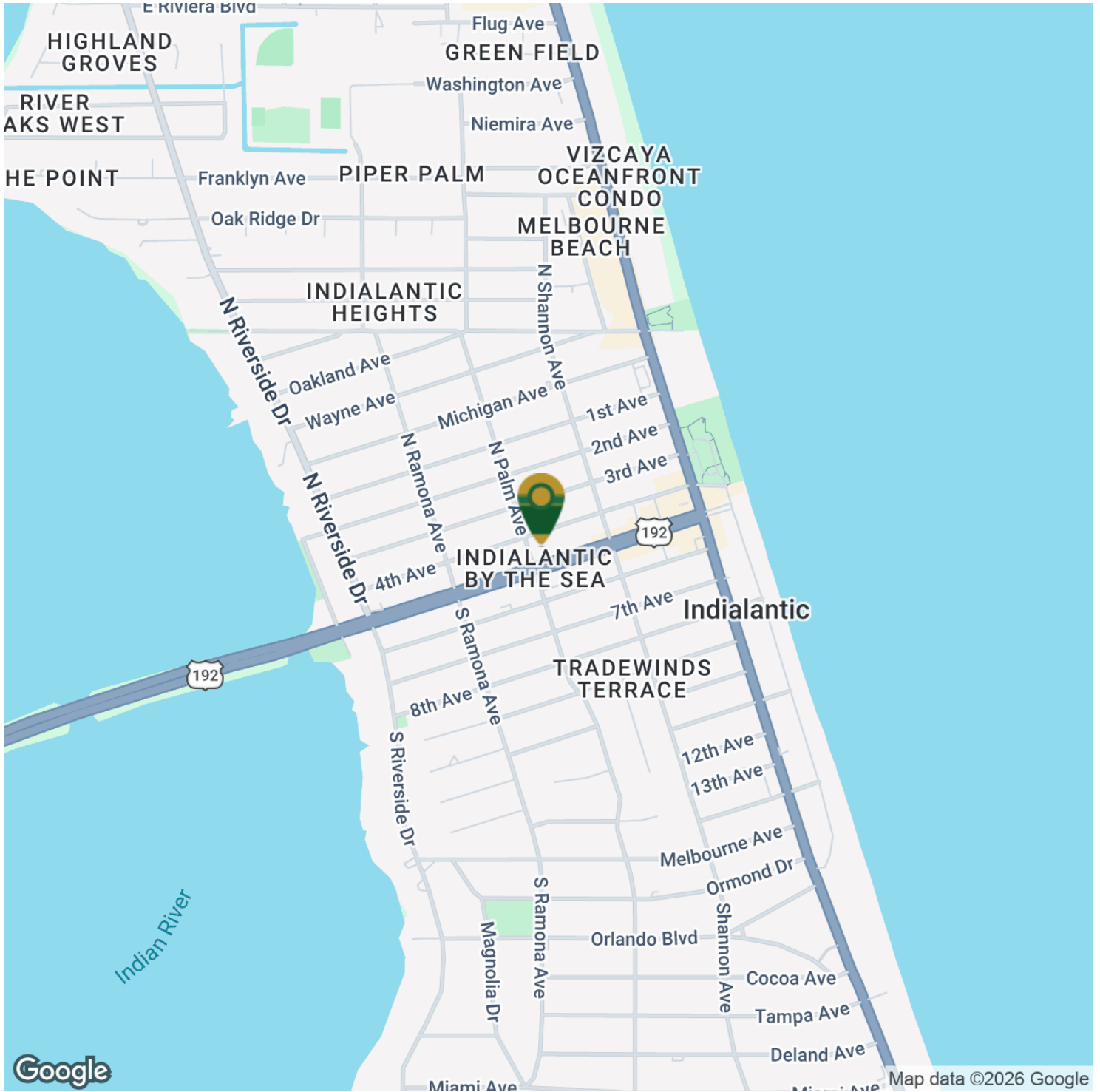


SIOR
Individual Members
Michael S. Ullian
Zachary M. Ullian

Fifth & Palm Office Complex

244 Fifth Avenue, Indialantic, FL 32903

Location Map



Zach Ullian, SIOR

Broker Associate

Cell: 321.750.3439

zach@ullianrealty.com



SIOR
Individual Members
Michael S. Ullian
Zachary M. Ullian