



OFFICE SPACE FOR LEASE

---

# 4334 NORTHWEST EXPRESSWAY

Oklahoma City, OK 73116



**CHASE ANDERSON**  
405.570.3606  
[chase@creekcre.com](mailto:chase@creekcre.com)

**TYLER HUXLEY**  
405.973.8435  
[tyler@creekcre.com](mailto:tyler@creekcre.com)

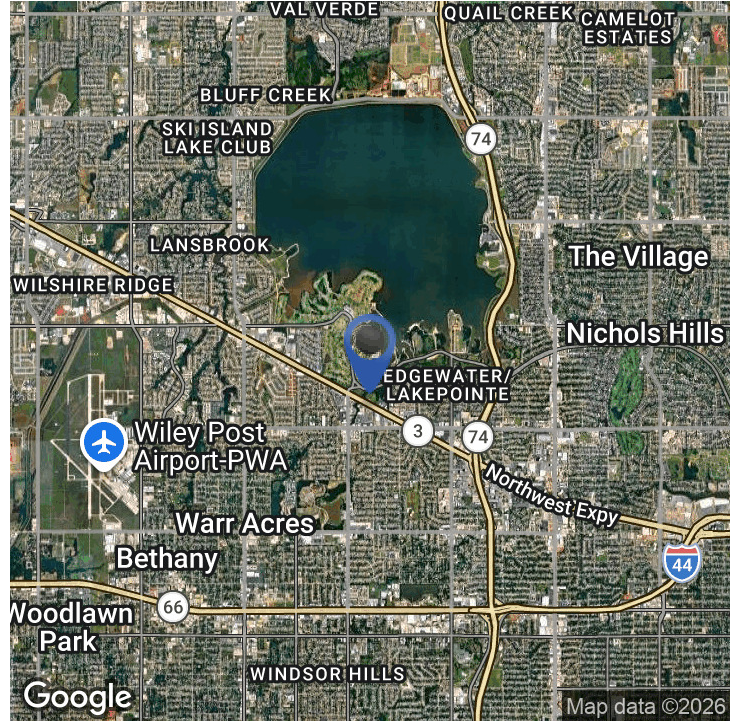
**MITCH HAMMACK**  
405.312.2512  
[mitch@creekcre.com](mailto:mitch@creekcre.com)

---

600 NE 4TH STREET, SUITE 100 | OKLAHOMA CITY, OK 73104-6231 | 405.510.0079 | [CREEKCRE.COM](http://CREEKCRE.COM)

FEBRUARY 16, 2026

## EXECUTIVE SUMMARY



Lease Rate

**\$15.25 - 19.28  
SF/YR**

### OFFERING SUMMARY

Building Size:	96,938 SF
Available SF:	498 - 4,544 SF
Lot Size:	4.043 Acres
Year Built:	1972
Zoning:	O-2
Market:	Oklahoma City
Traffic Count:	47,500

### PROPERTY OVERVIEW

Discover an exceptional leasing opportunity for your business at Northwest Office Center, a well-appointed professional office building in a premier Oklahoma City location. This property offers a variety of suite sizes with flexible floor plans to accommodate a range of business needs, making it an ideal setting for medical, legal, financial, or other professional services.

With numerous amenities, tenants enjoy the convenience of ample surface parking, two conference centers, an outdoor courtyard with a pond, multiple entrances, high-speed internet access, and inviting common areas.

Strategically positioned along NW Expressway, the property offers excellent visibility and close proximity to Lake Hefner Parkway, ensuring smooth commutes and easy navigation across the metro.

The surrounding area is home to a wide array of retail, dining, and service amenities, including Target, Sam's Club, Walmart, Home Depot, Hobby Lobby, and the upcoming Trader Joe's. Popular dining options nearby include Panera Bread, Clark Crew BBQ, Charleston's, Chick-fil-A, Louie's Grill & Bar, S&B's Burger Joint, and more.

Whether you're starting a new venture or expanding your business, Northwest Office Center provides the accessibility, amenities, and professional environment to help your business thrive.

**CHASE ANDERSON**  
405.570.3606  
chase@creekcre.com

**TYLER HUXLEY**  
405.973.8435  
tyler@creekcre.com

**MITCH HAMMACK**  
405.312.2512  
mitch@creekcre.com

## LEASE SPACES

### AVAILABLE SPACES

SUITE	SIZE (SF)	LEASE TYPE	LEASE RATE
100	1,821 SF	Full Service	\$15.25 SF/yr
102	969 SF	Full Service	\$1,250 per month
106	4,337 SF	Full Service	\$15.25 SF/yr
125	2,306 SF	Full Service	\$15.25 SF/yr
166	1,773 SF	Full Service	\$15.25 SF/yr
175	1,578 SF	Full Service	\$15.25 SF/yr
176	1,569 SF	Full Service	\$15.25 SF/yr
187	1,540 SF	Full Service	\$16.25 SF/yr
201	4,544 SF	Full Service	\$15.25 SF/yr
202	1,167 SF	Full Service	\$1,500 per month
211	498 SF	Full Service	\$800 per month
214	702 SF	Full Service	\$1,000 per month
216	893 SF	Full Service	\$1,250 per month
222	593 SF	Full Service	\$800 per month
227	2,034 SF	Full Service	\$15.25 SF/yr
235	1,068 SF	Full Service	\$1,500 per month
236	1,302 SF	Full Service	\$15.25 SF/yr
237	617 SF	Full Service	\$800 per month
240	700 SF	Full Service	\$1,000 per month
260	770 SF	Full Service	\$1,000 per month
261	1,765 SF	Full Service	\$15.25 SF/yr
265	1,133 SF	Full Service	\$1,500 per month
270	1,121 SF	Full Service	\$1,500 per month
272	1,422 SF	Full Service	\$15.25 SF/yr
273	1,389 SF	Full Service	\$15.25 SF/yr
291	2,037 SF	Full Service	\$15.25 SF/yr

CHASE ANDERSON  
405.570.3606  
chase@creekcre.com

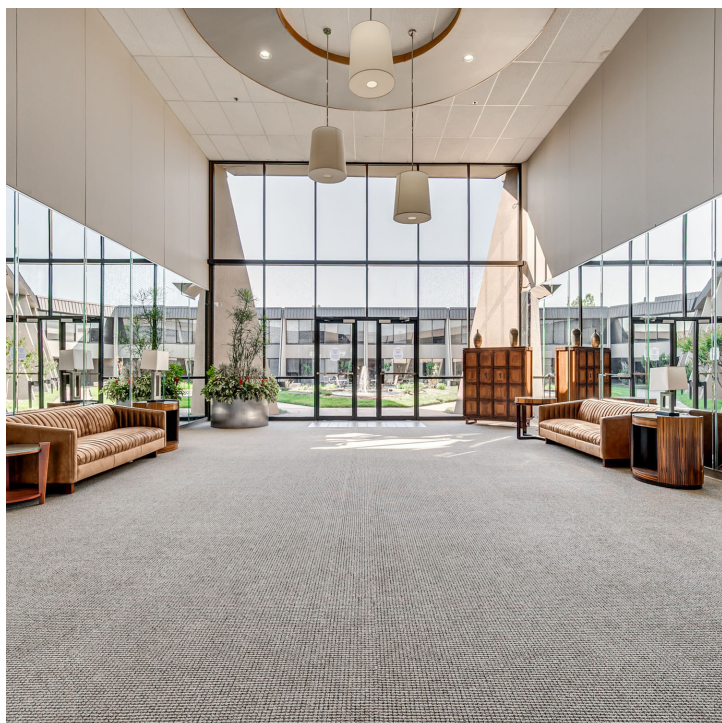
TYLER HUXLEY  
405.973.8435  
tyler@creekcre.com

MITCH HAMMACK  
405.312.2512  
mitch@creekcre.com

4334 NORTHWEST EXPRESSWAY  
4334 NORTHWEST EXPRESSWAY | OKLAHOMA CITY, OK 73116



## ADDITIONAL PHOTOS

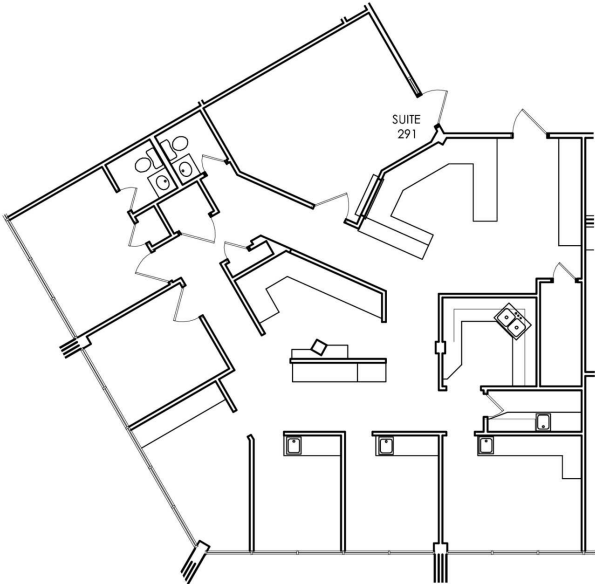


**CHASE ANDERSON**  
405.570.3606  
[chase@creekcre.com](mailto:chase@creekcre.com)

**TYLER HUXLEY**  
405.973.8435  
[tyler@creekcre.com](mailto:tyler@creekcre.com)

**MITCH HAMMACK**  
405.312.2512  
[mitch@creekcre.com](mailto:mitch@creekcre.com)

FLOOR PLANS



KKT ARCHITECTS, INC.  
2001 SOUTH URCA PLACE, SUITE 200  
TULSA, OKLAHOMA 74114  
P: 918.744.4270 | F: 918.744.7849  
WWW.KKTARCHITECTS.COM  
C.O.F.A. #534 6/30/25

NORTH  
WEST  
OFFICE  
CENTER

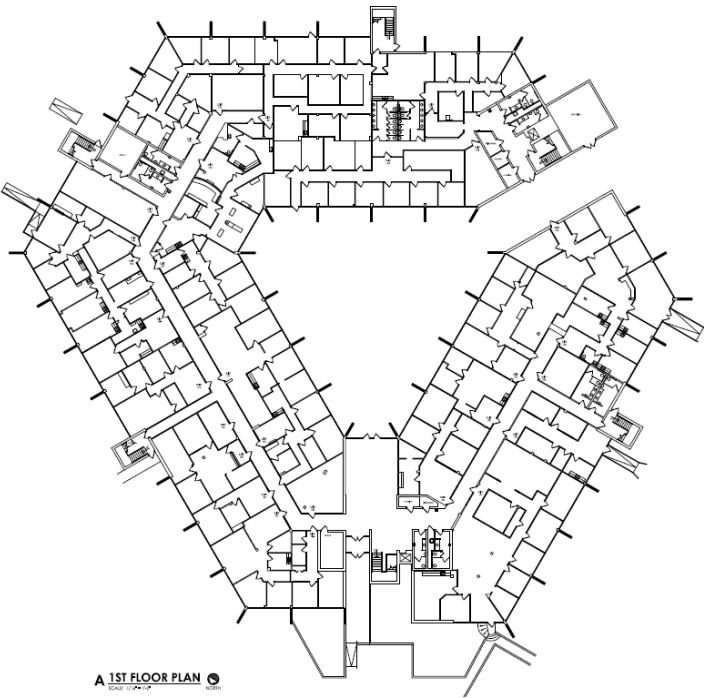
SUITE  
291

4334  
NORTHWEST EXPY.  
OKLAHOMA CITY  
OK 73116



431.05 12H

AS-BUILT  
PLAN  
AS.1

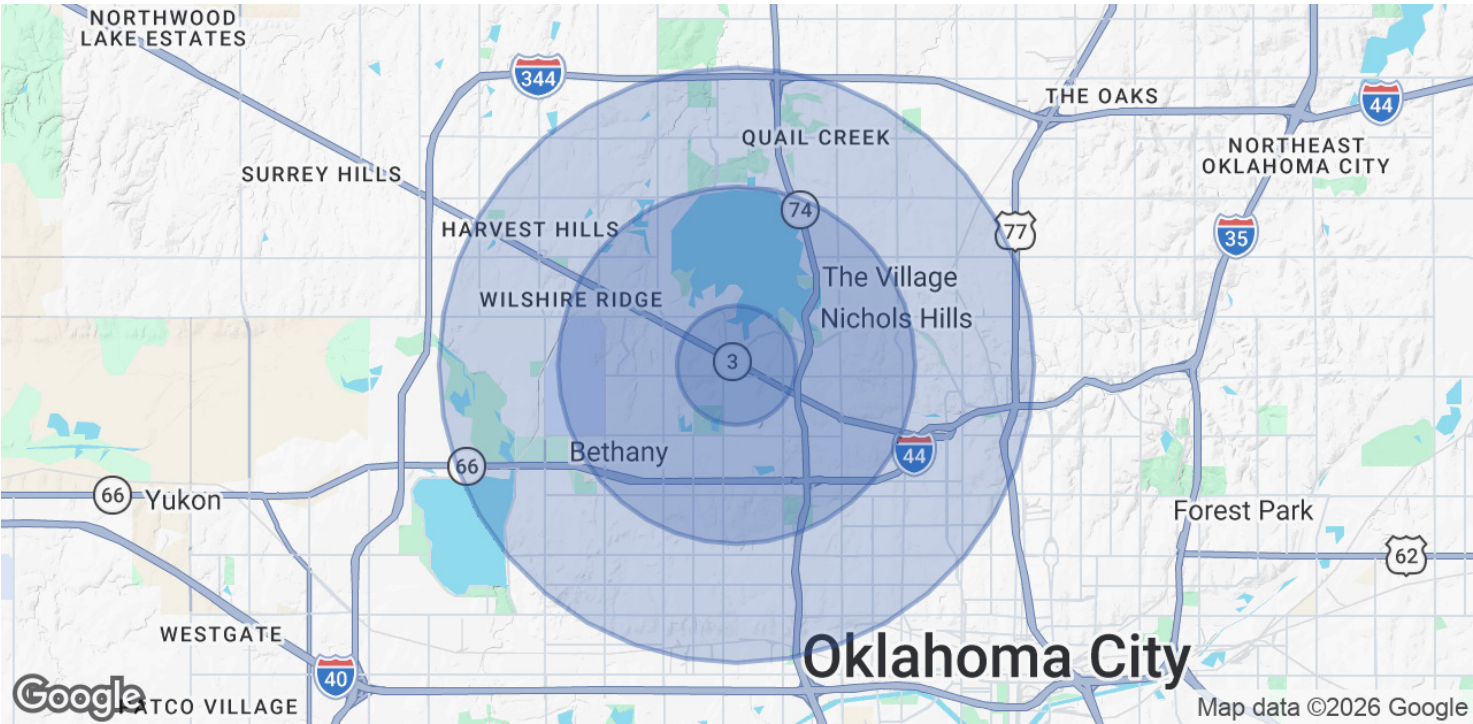


CHASE ANDERSON  
405.570.3606  
chase@creekcre.com

TYLER HUXLEY  
405.973.8435  
tyler@creekcre.com

MITCH HAMMACK  
405.312.2512  
mitch@creekcre.com

DEMOGRAPHICS MAP & REPORT



POPULATION	1 MILE	3 MILES	5 MILES
Total Population	10,209	86,042	252,786
Average Age	41	40	39
Average Age (Male)	40	38	38
Average Age (Female)	43	41	41

HOUSEHOLDS & INCOME	1 MILE	3 MILES	5 MILES
Total Households	4,472	37,498	109,478
# of Persons per HH	2.3	2.3	2.3
Average HH Income	\$78,844	\$81,190	\$84,358
Average House Value	\$208,980	\$269,657	\$264,723

Demographics data derived from AlphaMap

CHASE ANDERSON  
405.570.3606  
chase@creekcre.com

TYLER HUXLEY  
405.973.8435  
tyler@creekcre.com

MITCH HAMMACK  
405.312.2512  
mitch@creekcre.com

## RETAILER MAP



**CHASE ANDERSON**  
405.570.3606  
chase@creekcre.com

**TYLER HUXLEY**  
405.973.8435  
tyler@creekcre.com

**MITCH HAMMACK**  
405.312.2512  
mitch@creekcre.com