

# 3,800 SF NEWLY BUILT RESTAURANT



## FOR LEASE



## 330 West Nine Mile Road

Ferndale, Michigan 48220

### Property Highlights

- Turnkey Restaurant/Bar
- Heart of Downtown Ferndale
- One of Metro Detroit's Leading Entertainment Districts
- Full Kitchen
- Kitchen Equipment and Liquor License Available
- Spacious Outdoor Patio
- Plenty of Municipal Parking
- Renovated in 2023
- Walker's Paradise (93) Walk Score

### OFFERING SUMMARY

Lease Rate:	\$28.00 SF/yr (NNN)
Available SF:	3,800 SF
Building Size:	8,089 SF

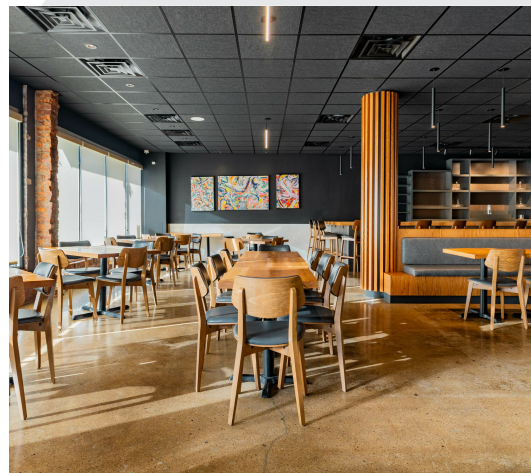
DEMOGRAPHICS	1 MILE	3 MILES	5 MILES
Total Households	8,571	65,520	159,155
Total Population	16,699	144,008	365,350
Average HH Income	\$116,986	\$96,893	\$82,768



# 3,800 SF NEWLY BUILT RESTAURANT



## FOR LEASE



**NAI Farbman**  
Commercial Real Estate Services, Worldwide.

[www.naifarbman.com](http://www.naifarbman.com)

**Rick Ax**  
Associate Broker | 248.351.6319  
[ax@farbman.com](mailto:ax@farbman.com)

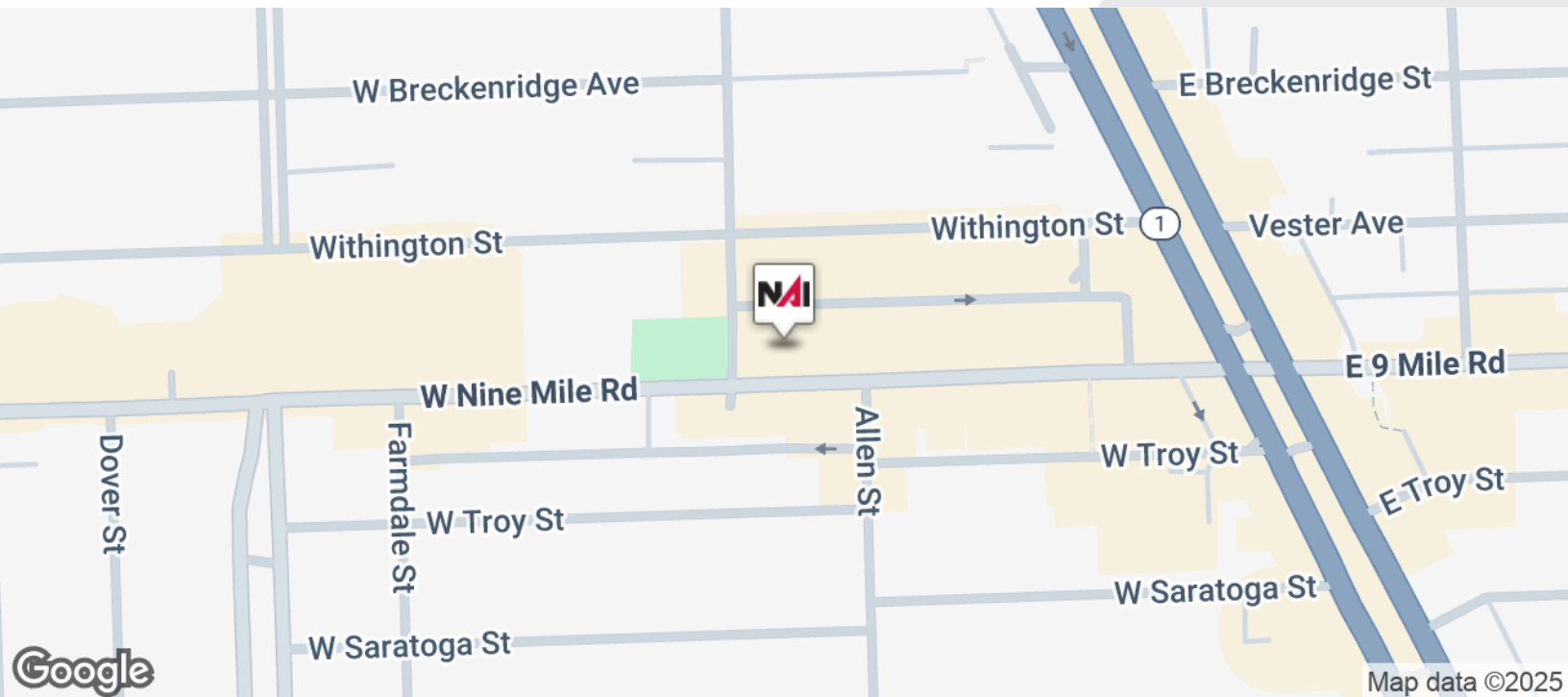
NO WARRANTY, EXPRESS OR IMPLIED, IS MADE AS TO THE ACCURACY OF THE INFORMATION CONTAINED HEREIN. THIS INFORMATION IS SUBMITTED SUBJECT TO ERRORS, OMISSIONS, CHANGE OF PRICE, RENTAL OR OTHER CONDITIONS, WITHDRAWAL WITHOUT NOTICE, AND IS SUBJECT TO ANY SPECIAL LISTING CONDITIONS IMPOSED BY OUR PRINCIPALS. COOPERATING BROKERS, BUYERS, TENANTS AND OTHER PARTIES WHO RECEIVE THIS DOCUMENT SHOULD NOT RELY ON IT, BUT SHOULD USE IT AS A STARTING POINT OF ANALYSIS, AND SHOULD INDEPENDENTLY CONFIRM THE ACCURACY OF THE INFORMATION CONTAINED HEREIN THROUGH A DUE DILIGENCE REVIEW OF THE BOOKS, RECORDS, FILES AND DOCUMENTS THAT CONSTITUTE RELIABLE SOURCES OF THE INFORMATION DESCRIBED HEREIN. LOGOS ARE FOR IDENTIFICATION PURPOSES ONLY AND MAY BE TRADEMARKS OF THEIR RESPECTIVE COMPANIES. NAI Farbman, INC. CA BRE LIC. #01990696.



# 3,800 SF NEWLY BUILT RESTAURANT



## FOR LEASE



Commercial Real Estate Services, Worldwide.

[www.naifarbman.com](http://www.naifarbman.com)

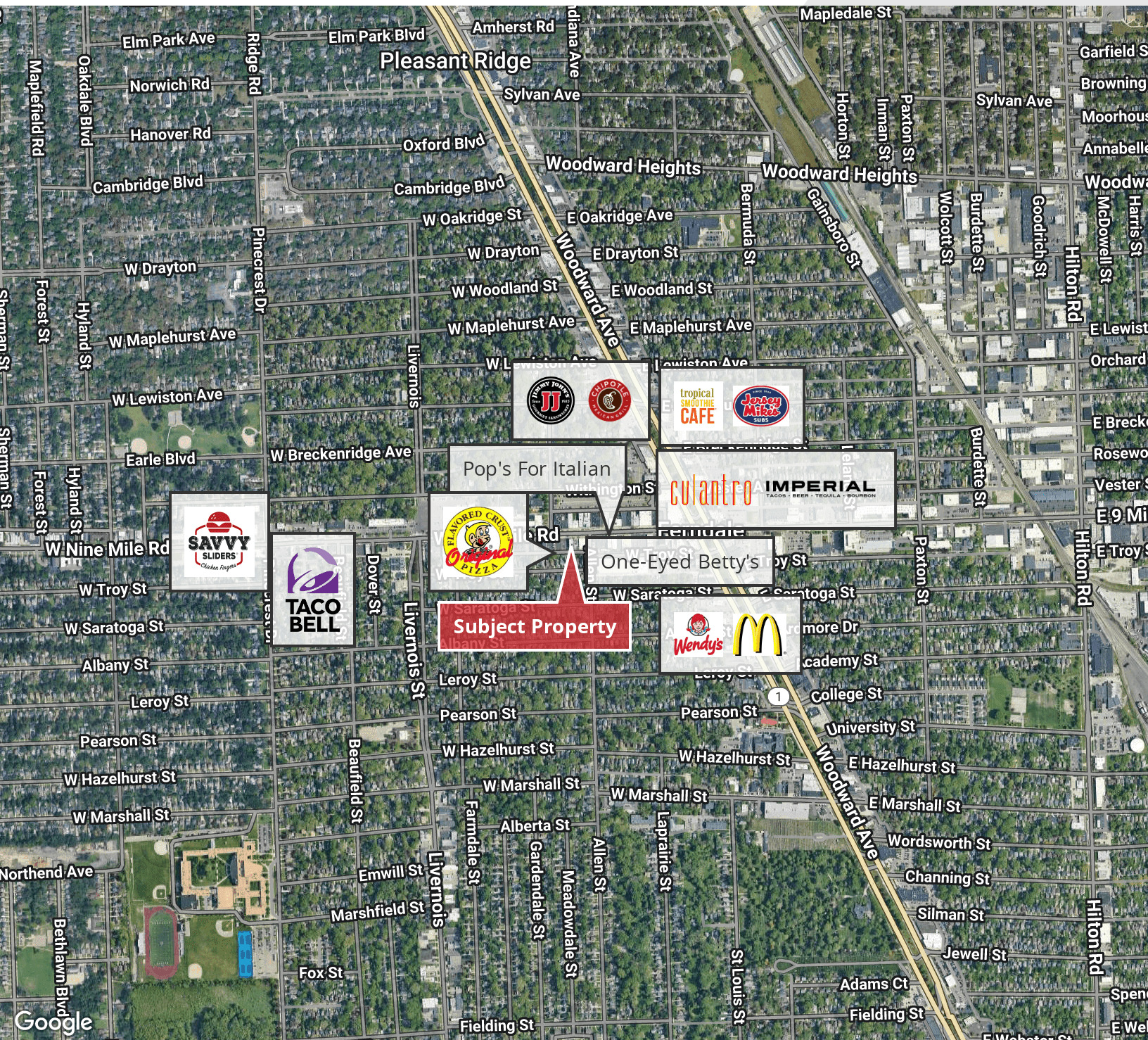
**Rick Ax**  
Associate Broker | 248.351.6319  
[ax@farbman.com](mailto:ax@farbman.com)

NO WARRANTY, EXPRESS OR IMPLIED, IS MADE AS TO THE ACCURACY OF THE INFORMATION CONTAINED HEREIN. THIS INFORMATION IS SUBMITTED SUBJECT TO ERRORS, OMISSIONS, CHANGE OF PRICE, RENTAL OR OTHER CONDITIONS, WITHDRAWAL WITHOUT NOTICE, AND IS SUBJECT TO ANY SPECIAL LISTING CONDITIONS IMPOSED BY OUR PRINCIPALS. COOPERATING BROKERS, BUYERS, TENANTS AND OTHER PARTIES WHO RECEIVE THIS DOCUMENT SHOULD NOT RELY ON IT, BUT SHOULD USE IT AS A STARTING POINT OF ANALYSIS, AND SHOULD INDEPENDENTLY CONFIRM THE ACCURACY OF THE INFORMATION CONTAINED HEREIN THROUGH A DUE DILIGENCE REVIEW OF THE BOOKS, RECORDS, FILES AND DOCUMENTS THAT CONSTITUTE RELIABLE SOURCES OF THE INFORMATION DESCRIBED HEREIN. LOGOS ARE FOR IDENTIFICATION PURPOSES ONLY AND MAY BE TRADEMARKS OF THEIR RESPECTIVE COMPANIES. NAI Farbman, INC. CA BRE LIC. #01990696.



# 3,800 SF NEWLY BUILT RESTAURANT

## FOR LEASE



Commercial Real Estate Services, Worldwide.

[www.naifarbman.com](http://www.naifarbman.com)

**Rick Ax**  
Associate Broker | 248.351.6319  
[ax@farbman.com](mailto:ax@farbman.com)

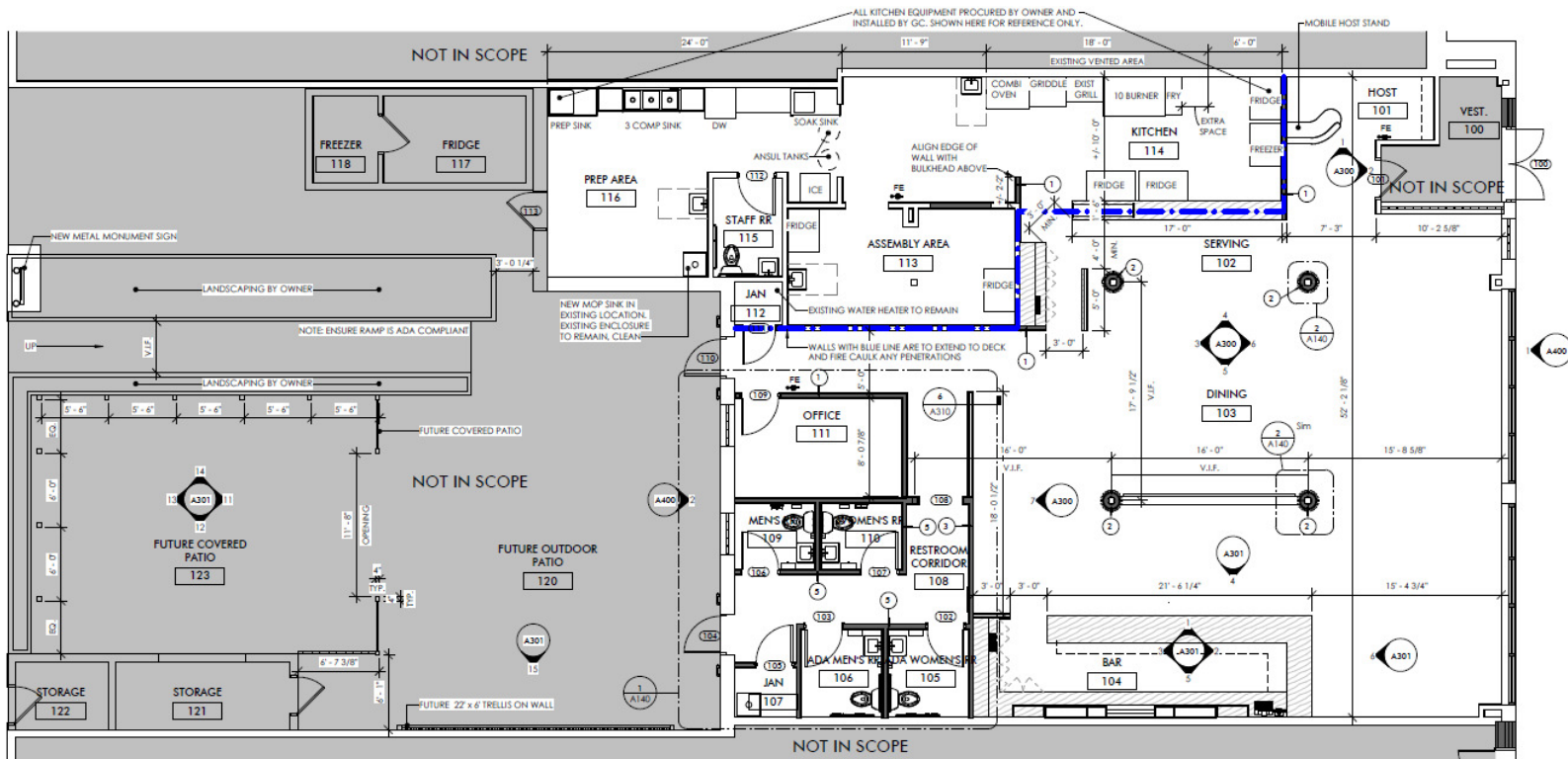
NO WARRANTY, EXPRESS OR IMPLIED, IS MADE AS TO THE ACCURACY OF THE INFORMATION CONTAINED HEREIN. THIS INFORMATION IS SUBMITTED SUBJECT TO ERRORS, OMISSIONS, CHANGE OF PRICE, RENTAL OR OTHER CONDITIONS, WITHDRAWAL WITHOUT NOTICE, AND IS SUBJECT TO ANY SPECIAL LISTING CONDITIONS IMPOSED BY OUR PRINCIPALS. COOPERATING BROKERS, BUYERS, TENANTS AND OTHER PARTIES WHO RECEIVE THIS DOCUMENT SHOULD NOT RELY ON IT, BUT SHOULD USE IT AS A STARTING POINT OF ANALYSIS, AND SHOULD INDEPENDENTLY CONFIRM THE ACCURACY OF THE INFORMATION CONTAINED HEREIN THROUGH A DUE DILIGENCE REVIEW OF THE BOOKS, RECORDS, FILES AND DOCUMENTS THAT CONSTITUTE RELIABLE SOURCES OF THE INFORMATION DESCRIBED HEREIN. LOGOS ARE FOR IDENTIFICATION PURPOSES ONLY AND MAY BE TRADEMARKS OF THEIR RESPECTIVE COMPANIES. NAI Farbman, INC. CA BRE LIC. #01990696.



# 3,800 SF NEWLY BUILT RESTAURANT



## FOR LEASE





# 3,800 SF NEWLY BUILT RESTAURANT



## FOR LEASE



POPULATION	1 MILE	3 MILES	5 MILES
Total Population	16,699	144,008	365,350
Average Age	40	41	41
Average Age (Male)	40	39	39
Average Age (Female)	41	42	42
HOUSEHOLDS & INCOME	1 MILE	3 MILES	5 MILES
Total Households	8,571	65,520	159,155
# of Persons per HH	1.9	2.2	2.3
Average HH Income	\$116,986	\$96,893	\$82,768
Average House Value	\$307,798	\$244,666	\$207,026

Demographics data derived from AlphaMap