



OFFICE SPACE

For Lease

Maitland Colonnades
2301 Lucien Way
Maitland, FL 32751


STREAM

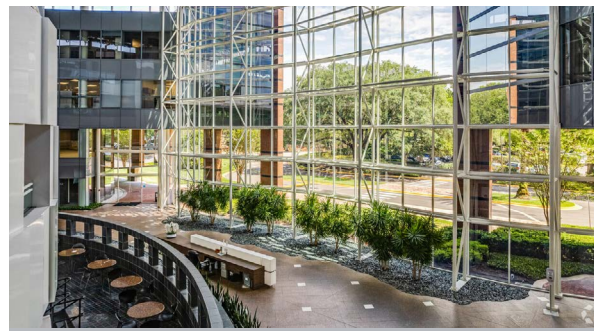
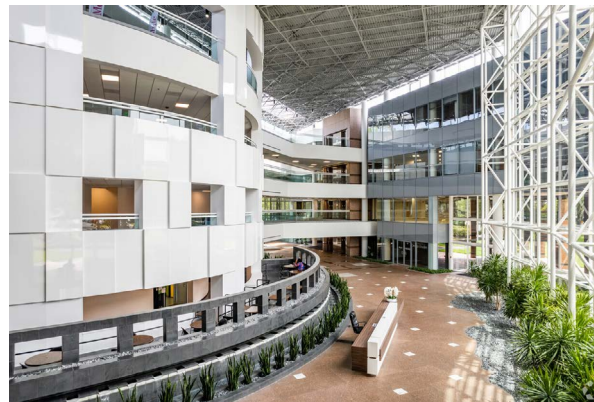
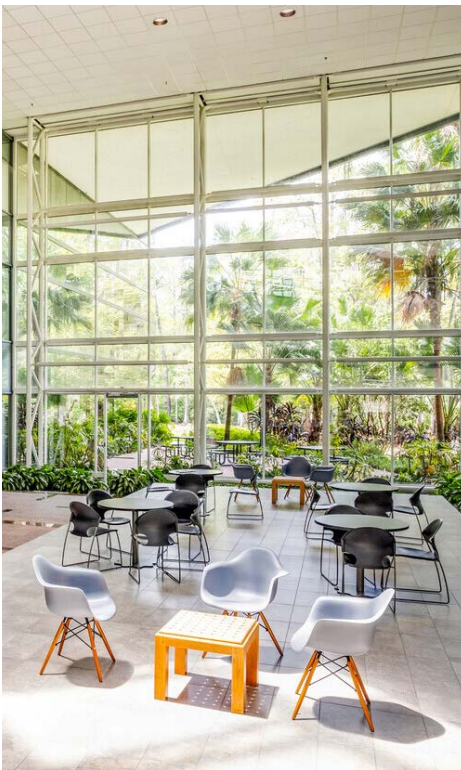


Building Features & Amenities

Maitland Colonnades is a 4-story Class A office building with approximately 260,000 RSF. The building features plug & play space and offers flexible terms.

A \$4 million interior renovation was recently completed positioning it as one of the most desirable office buildings in Maitland Center.

- \$4 Million Interior Renovation
- On-Site Institutional Property Management
- Plug & Play Space with Flexible Terms
- 4/1000 Parking Ratio
- Structured Parking Available
- 24 Hour Building Security | Mon. - Fri.
- Fiber Internet Available
- Brand New Conference Center
- **New Building Feature: Advanced and Targeted Cleanings of Common Area Spaces**
- Newly Renovated Fitness Center with Showers & Lockers
- Building Cafe
- Lobby WiFi + Collaborative Distancing Area
- Views of Lake Lucien & Nature Preserve + Observation Deck

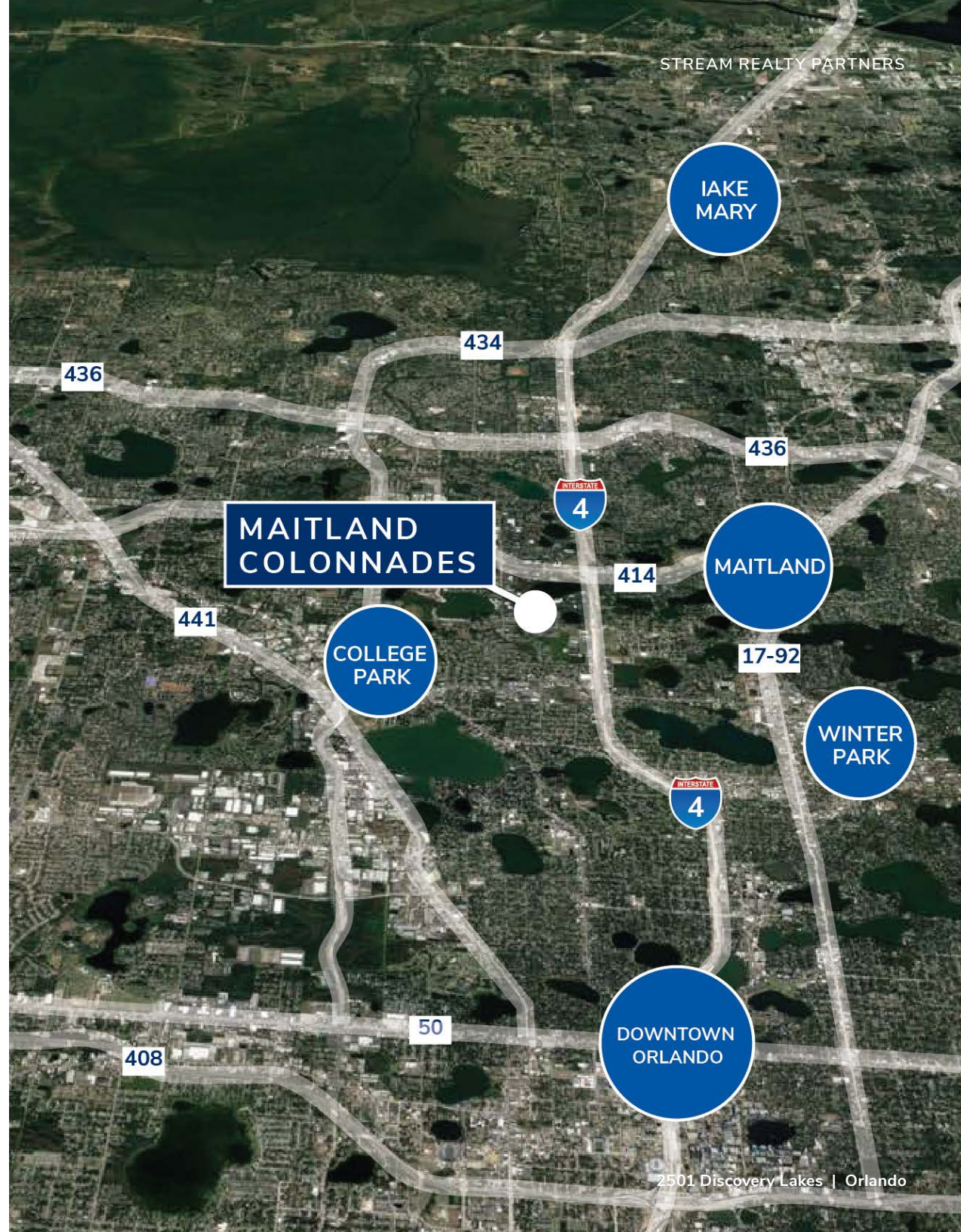


Newly Renovated Meeting Rooms & Fitness Center



Location Highlights

- Well-positioned within Maitland Center Office Park, one of Orlando's largest office submarkets
- Conveniently less than a half mile from I-4 & providing easy access to Downtown Orlando
- Close to business hotels, restaurants, retail and the RDV Sportsplex
- Ideally located in Central Florida's top executive housing market & the following established neighborhoods
 - Maitland: 3-Miles
 - Winter Park: 5-Miles
 - College Park: 7-Miles
 - Downtown: 8-Miles
 - Lake Mary: 12-Miles



Maitland Colonnades | 2301 Lucien Way



Let's Connect

John Gilbert

john.gilbert@streamrealty.com

407.214.0099

Darryl Hoffman

darryl.hoffman@streamrealty.com

407.204.1548

The information contained herein was obtained from sources believed reliable; however, Stream Realty Partners, L.P. make no guarantees, warranties, or representations as to the completeness or accuracy thereof. The presentation of this property is submitted subject to errors, change of price, or conditions, prior sale or lease, or withdrawal without notice.