

ROAN AT UNAKA CENTER

101 East Unaka Avenue
Johnson City, TN 37601

Location

At the intersection of E Unaka Ave and N Roan St in central Johnson City

Available for Lease

Suite 7: 1,500 SF retail/office - \$1,500/month NNN

Highlights

Tenant improvement allowance package available

Retail center with good mix of tenants, including Wok & Hibachi restaurant

Spacious paved parking lot

Signage on N Roan St

Located at a lighted intersection

0.3 miles from I-26, exit 22

Minutes from Downtown Johnson City and major retail district on N Roan Street

Traffic Counts

E Unaka Ave: 5,067 (2025)

N Roan St: 8,077 (2025)

Demographics

(2025 Est.)	3 mile	5 mile	10 mile
Population	54,644	84,362	165,365
Median HH Income	\$50,220	\$54,177	\$61,338
Median Age	35.1	37.9	41.6

Contact

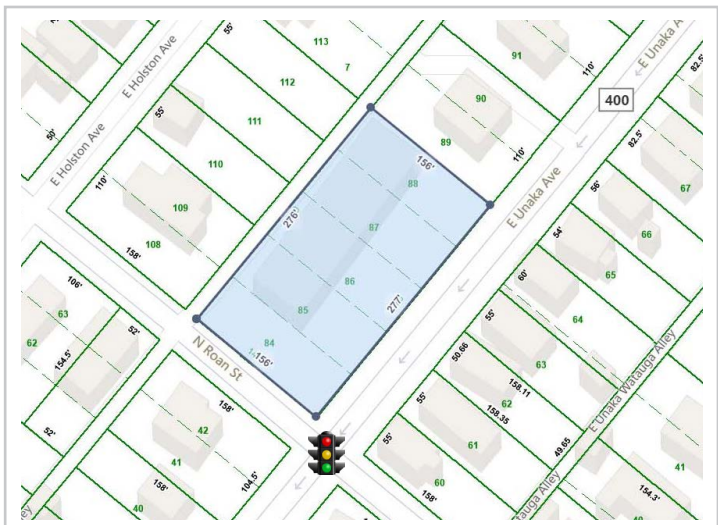
Shannon K. Castillo

Broker

shannon@mitchcox.com

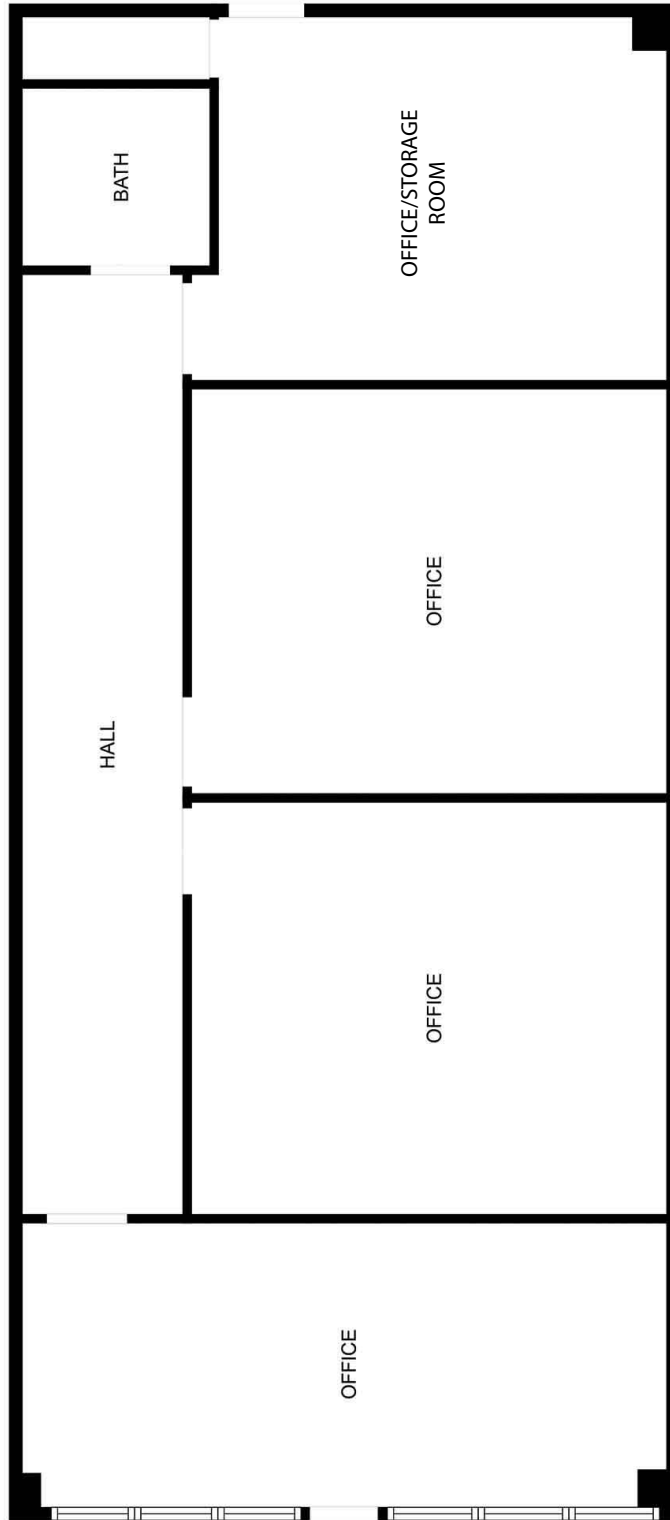
📞 423-282-6582 | 📠 423-282-5903

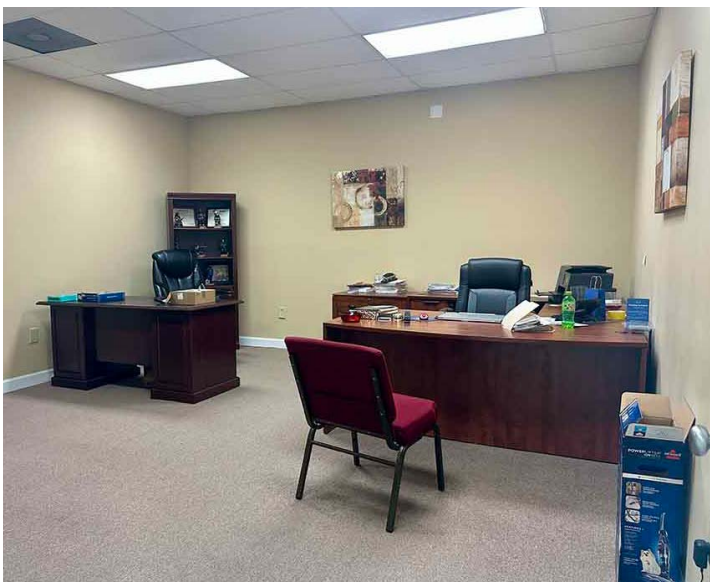
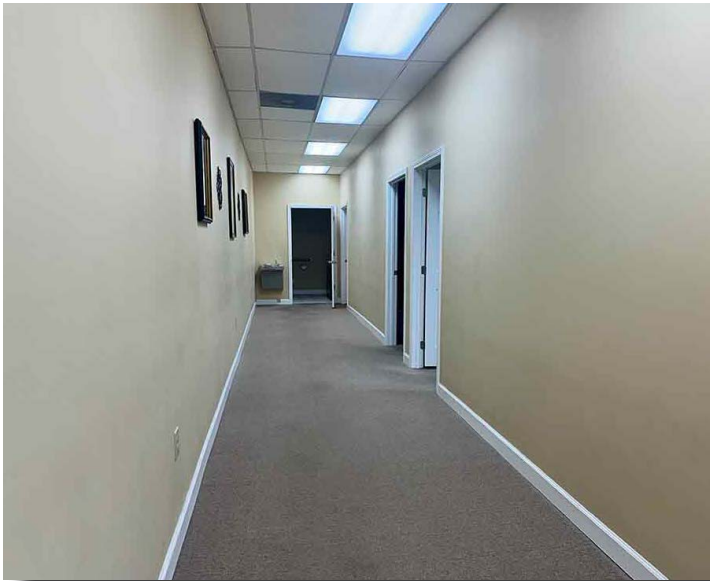
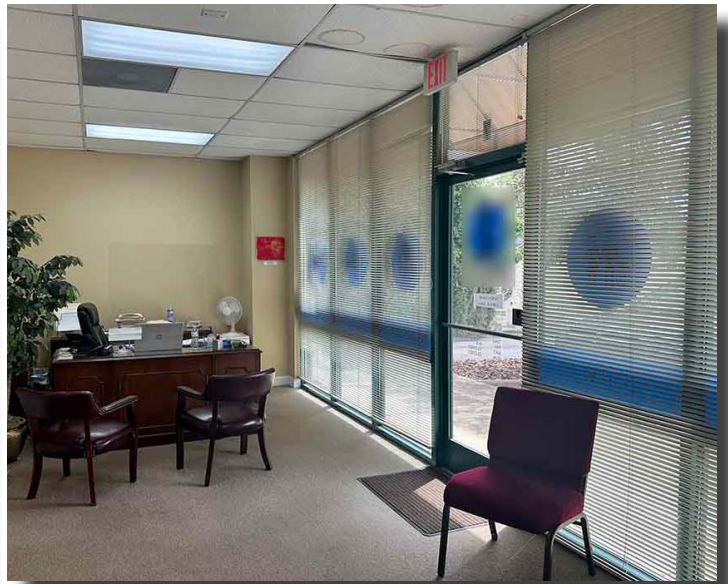
www.mitchcox.com





Suite 7





MITCH COX
REALTOR, INC.

2304 Silverdale Drive, Suite 200, Johnson City, TN 37601
423-282-6582 (o) 423-282-5903 (f) www.mitchcox.com