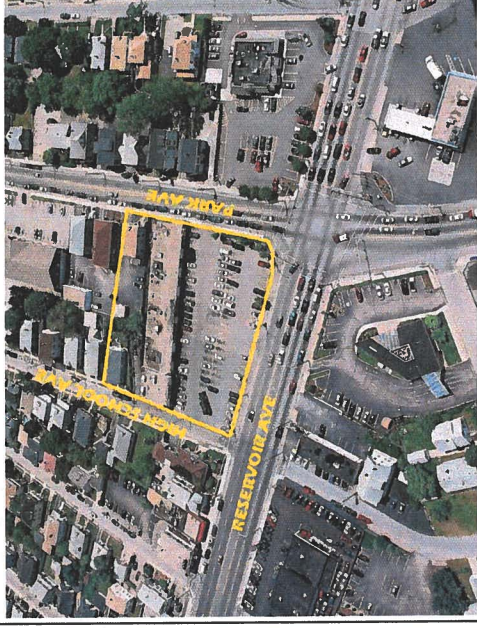
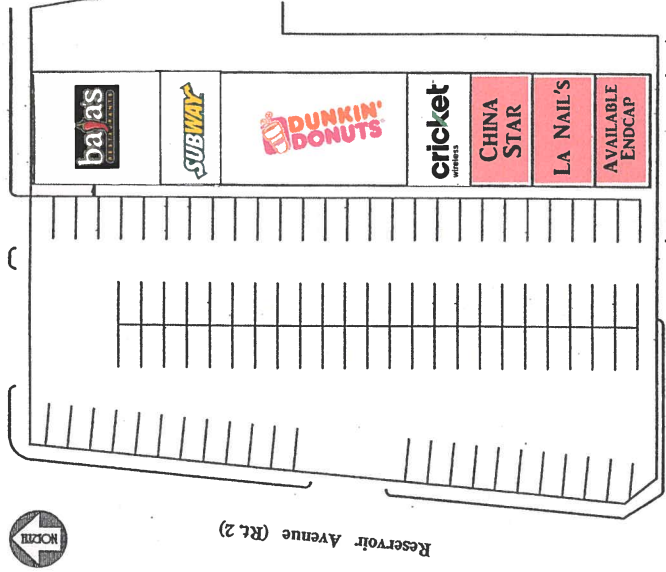


RESTAURANT STREET VIEW
RESERVOIR AVE., CRANSTON, R.I.



PARK & SHOP PLAZA
624-640 RESERVOIR AVE

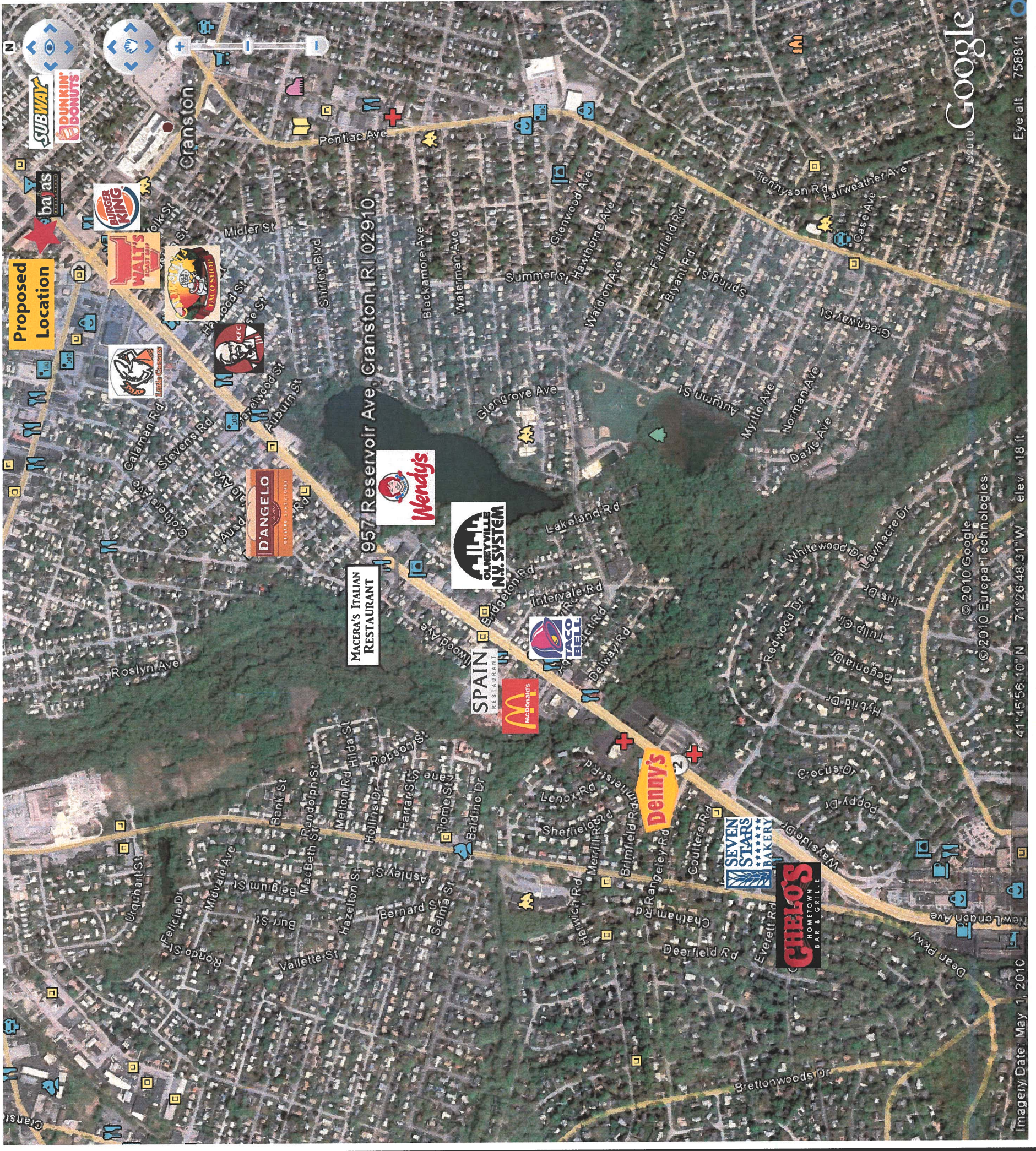


Park Avenue (Rt. 12)

OPPORTUNITY FOR

1,125SF - 3,375SF

c/o Picerne Real Estate Group
 75 Lambert Lind Hwy
 Warwick, Rhode Island
 Telephone: (401) 301-3673
 Attn: Michael Grilo
 Commercial Division



Imagery Date: May 1, 2010

41°45'56.10"N 71°26'48.31"W elev 18 ft

Eye alt 7588 ft

Google