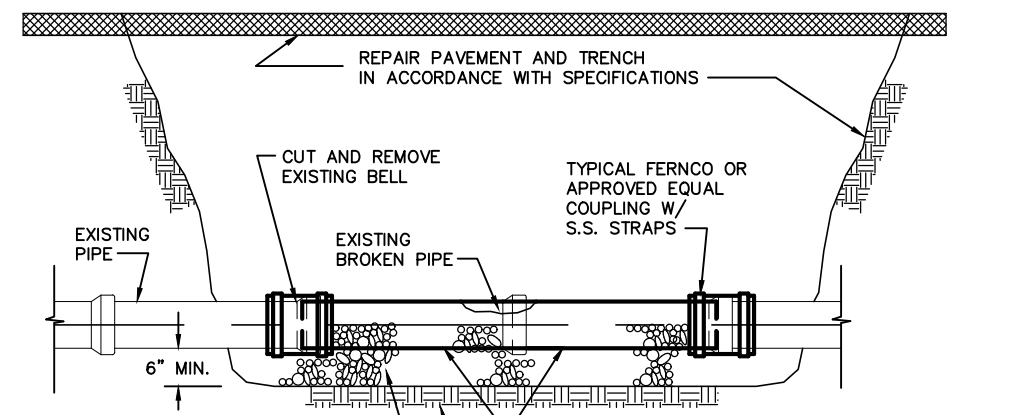


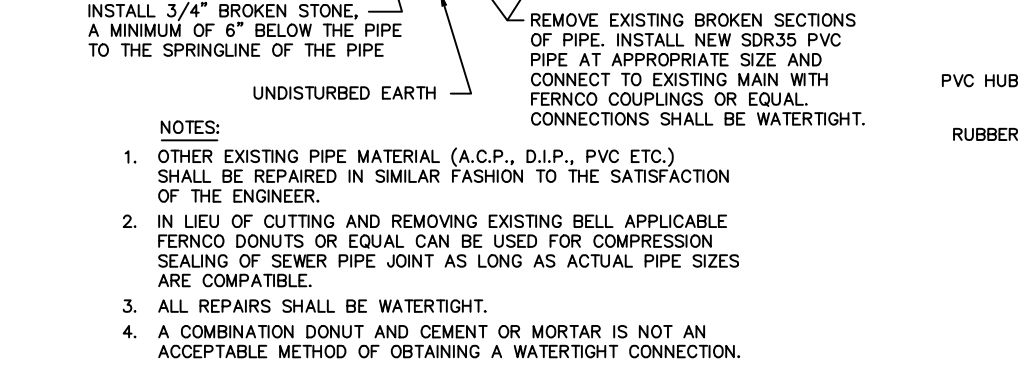
STANDARD CLEANOUT DETAIL
N.T.S.

NOTES:
1. CLEANOUT SHALL BE LOCATED (1) ONE FOOT BEFORE PROPERTY LINE IF NO CURB EXISTS, OR AS DIRECTED BY THE ENGINEER.
2. CONTRACTOR SHALL FABRICATE AND SUPPLY (2) WRENCHES TO L.B.S.A. FOR REMOVAL OF CLEAN-OUT CAP.
3. PIPE SHALL BE SDR35 PVC UNLESS SPECIFICALLY APPROVED OTHERWISE.

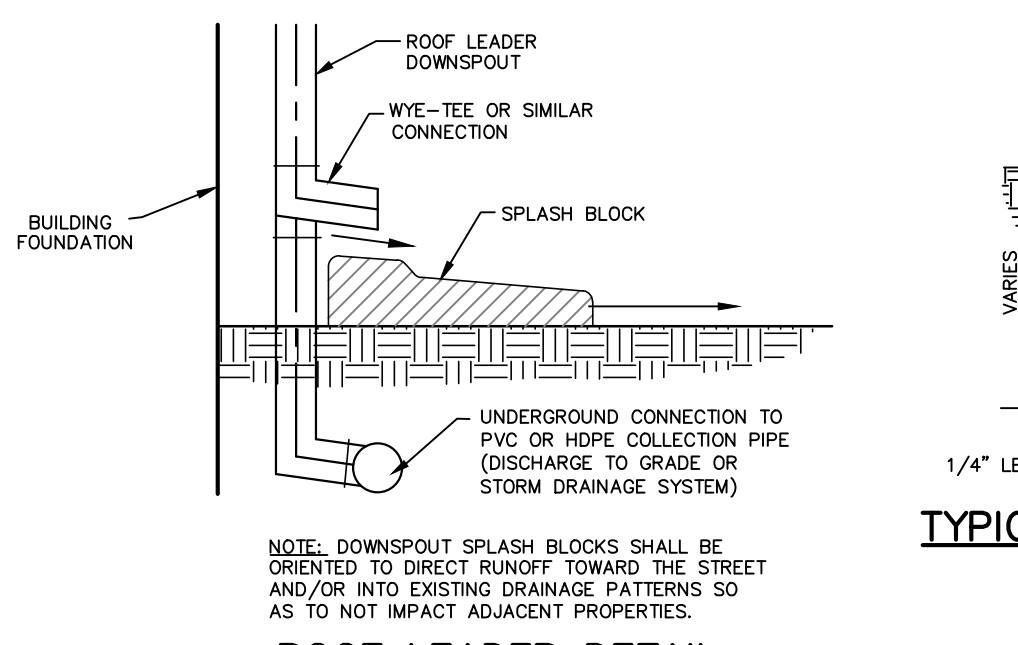


BRANCH AND LATERAL CONNECTION
N.T.S.

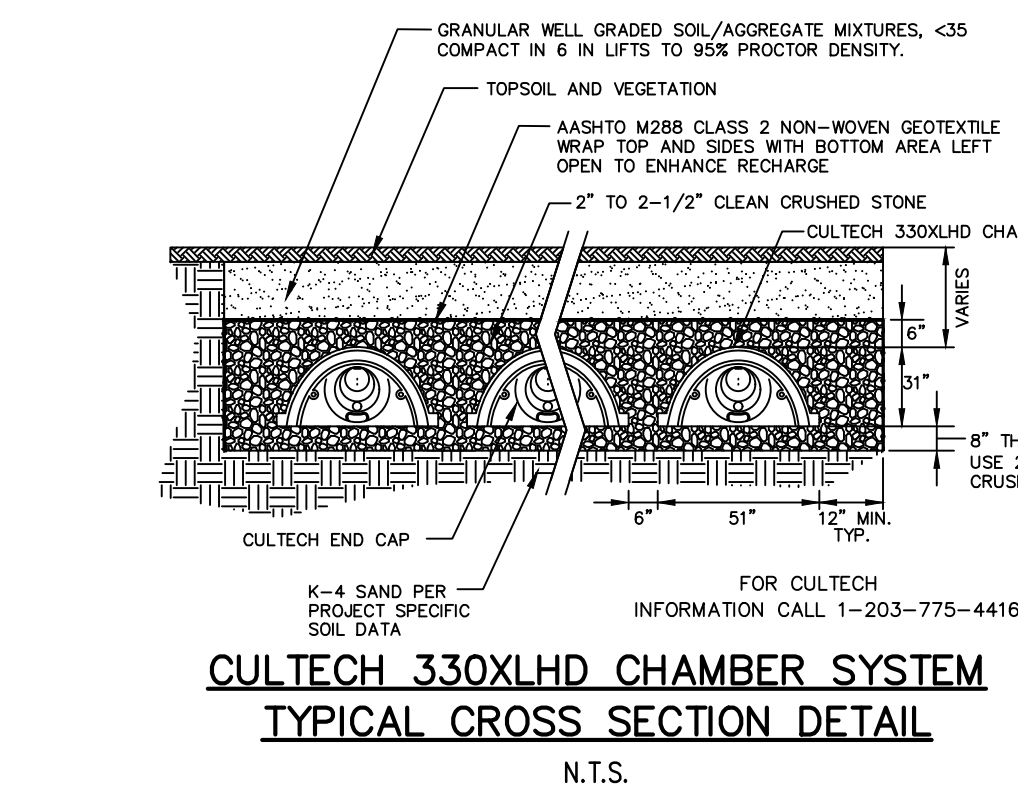
CONSTRUCTION NOTES:
1. DETAIL SHOWS CONSTRUCTION OF A NEW BRANCH CONNECTION AND OF TWO (2) DIFFERENT ACCEPTABLE TYPES OF CUT IN CONNECTION. REFER TO INSERTA-TEE DETAIL FOR ANOTHER CUT IN TYPE CONNECTION.
2. TYPE OF CUT IN CONNECTION IS AT CONTRACTOR'S OPTION.
3. SIZE OF LATERAL TO BE SHOWN ON PLANS. 4" FOR RESIDENTIAL AND 6" FOR COMMERCIAL MINIMUM.
4. WHEREVER POSSIBLE, LATERAL CONNECTION TO MAIN PIPE SHALL BE POSITIONED AT 60° ANGLE OR LESS MEASURED FROM THE MAIN PIPE. CONTRACTOR TO OBTAIN AUTHORITY'S APPROVAL FOR ANGLES LARGER THAN 60°.
5. ALL OPENINGS IN SANITARY SEWER MAIN FOR CUT IN TYPE OF LATERAL CONNECTION SHALL BE MADE USING CORE DRILLING. BREAK IN TECHNIQUE SHALL NOT BE USED.



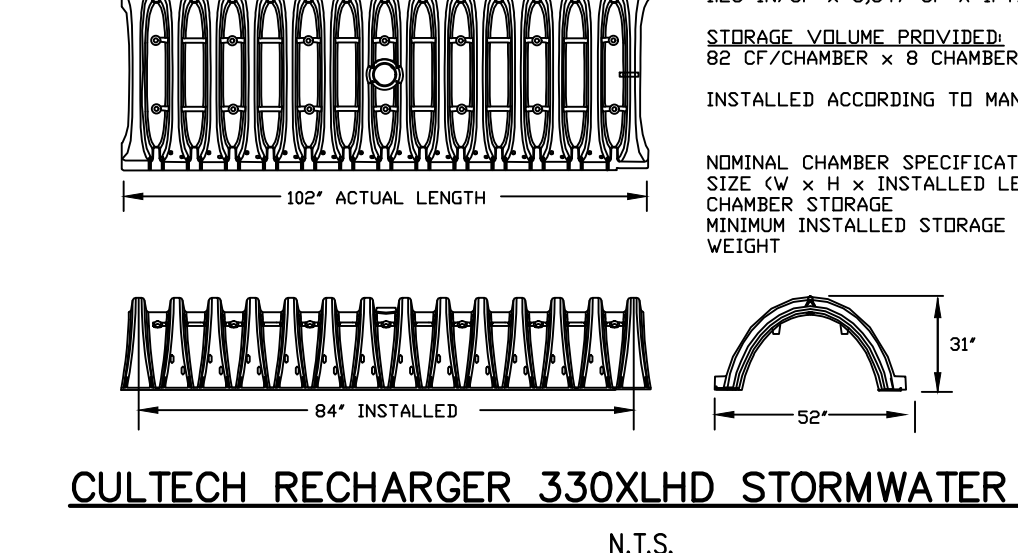
TYPICAL SANITARY SEWER SPOT REPAIR DETAIL
N.T.S.



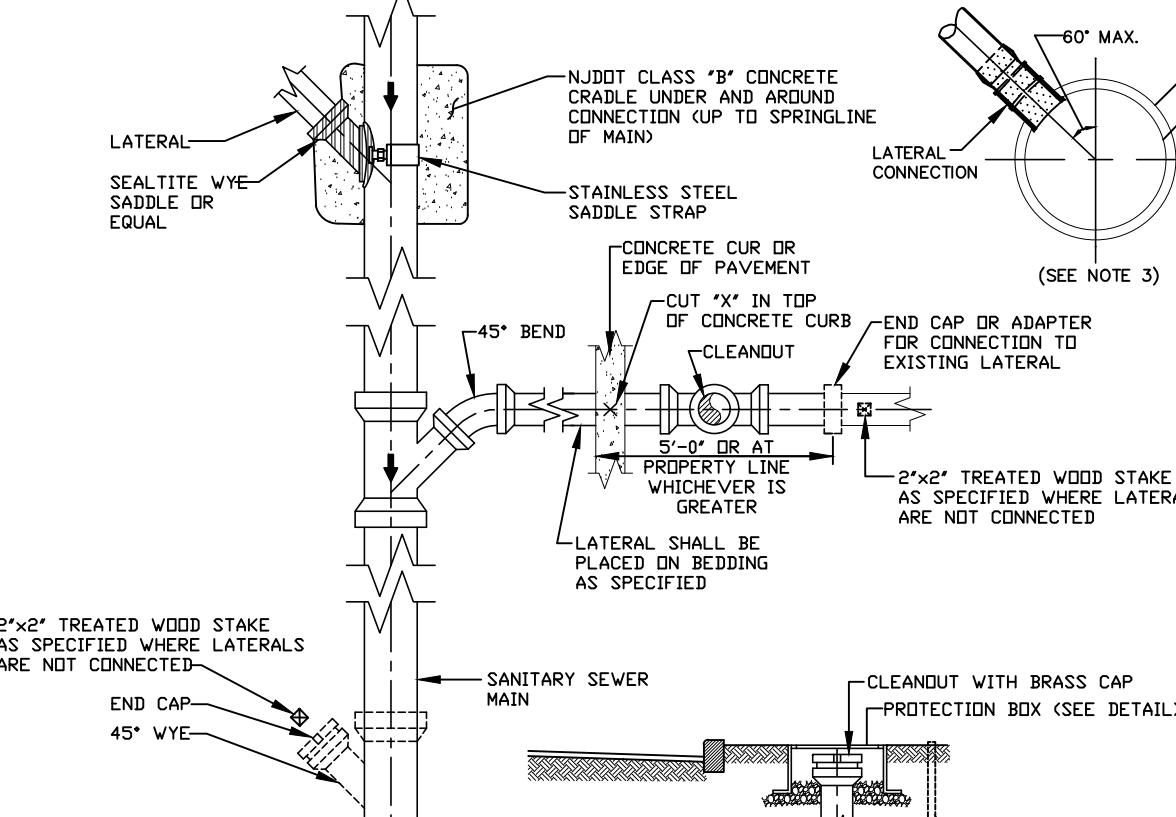
ROOF LEADER DETAIL
N.T.S.



CULTECH 330XLHD CHAMBER SYSTEM TYPICAL CROSS SECTION DETAIL
N.T.S.

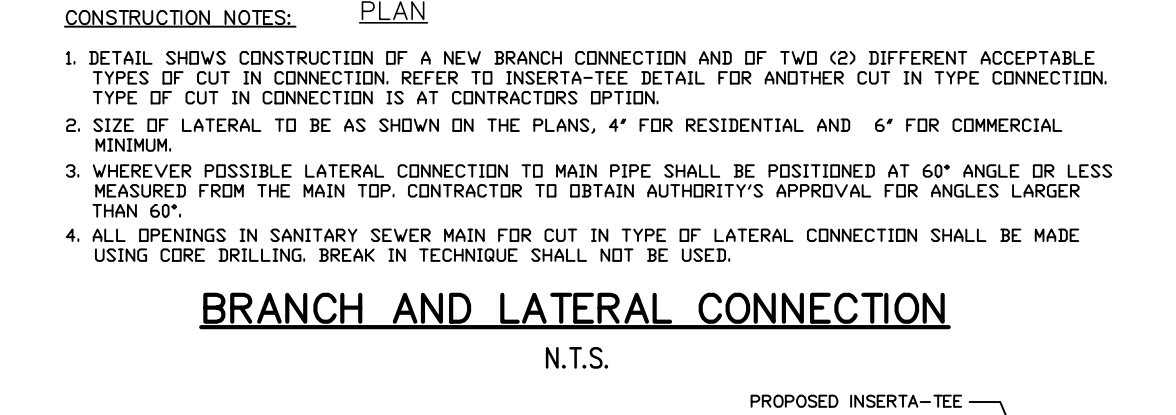


CULTECH RECHARGER 330XLHD STORMWATER CHAMBER
N.T.S.

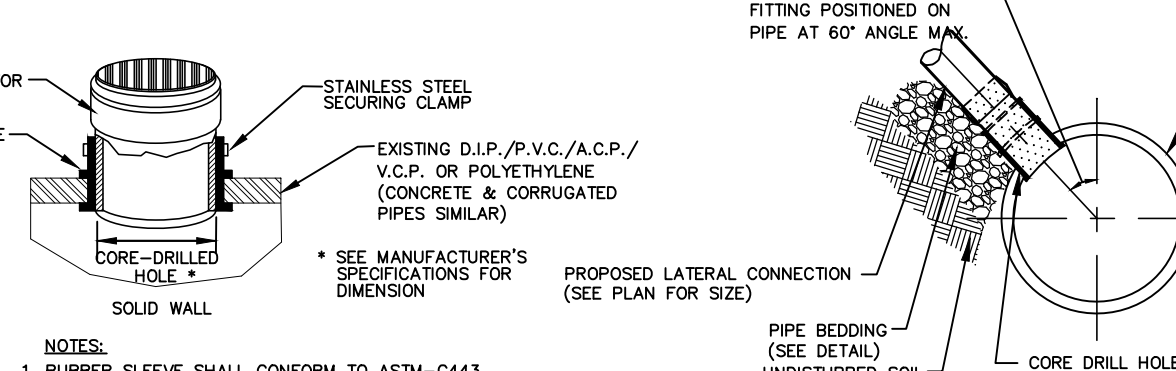


STANDARD PVC PIPE BEDDING DETAIL
N.T.S.

NOTES:
1. BEDDING SHALL BE 3/4" CLEAN CRUSHED STONE.
2. HYDROHAMMERS ARE NOT TO BE USED 3' OR LESS FROM TOP OF PIPE.

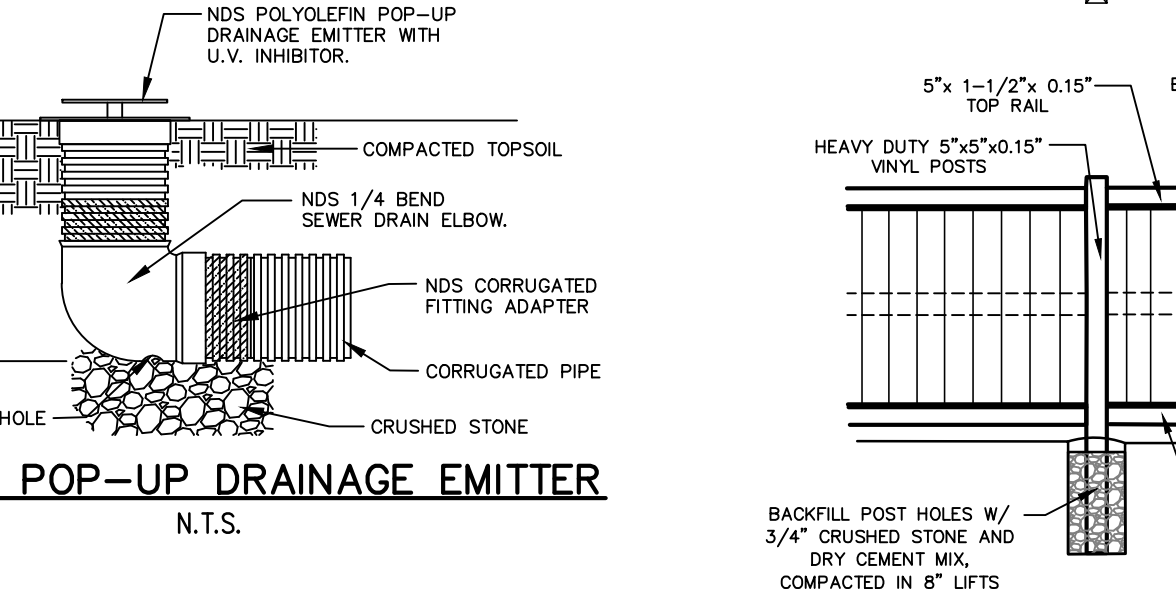


CLEAN-OUT PROTECTION BOX DETAIL
N.T.S.

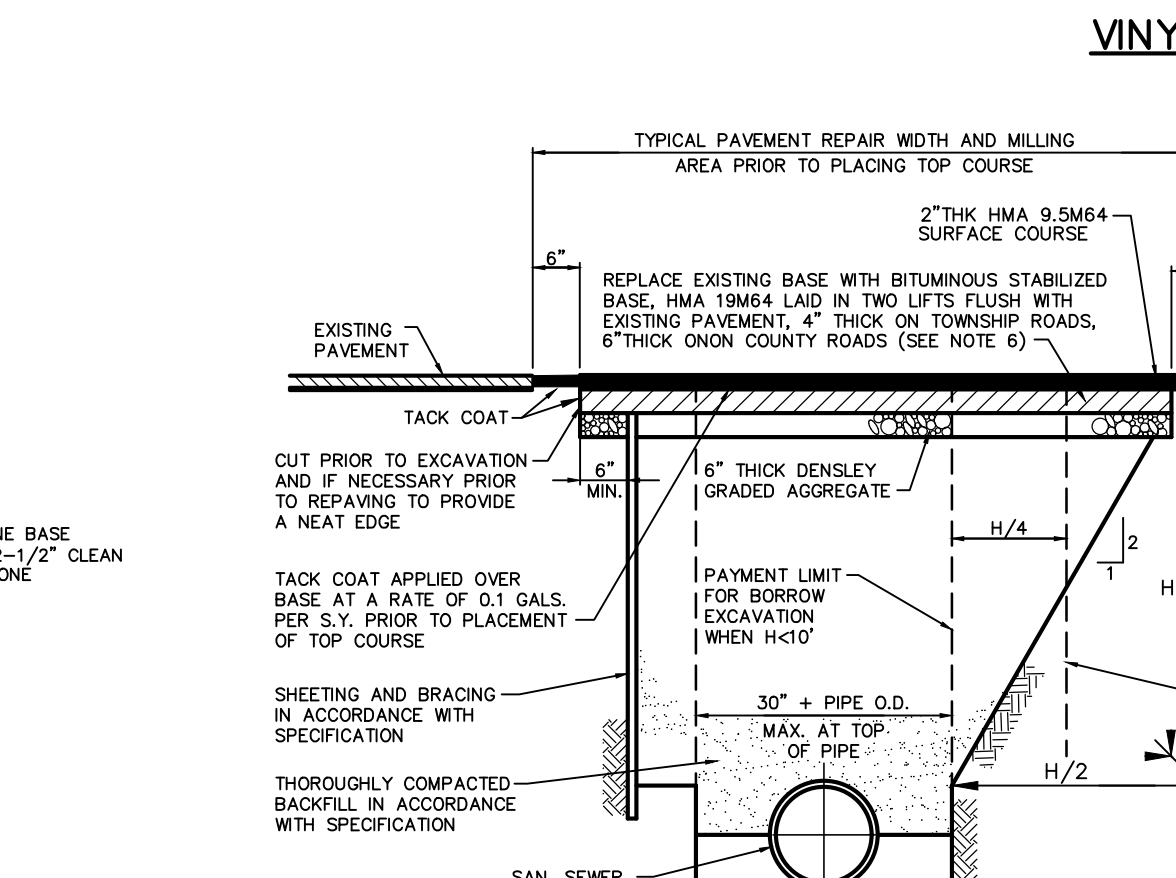


DETAIL OF INSERTA TEE CONNECTION
N.T.S.

NOTES:
1. RUBBER SLEEVE SHALL CONFORM TO ASTM-C443.
2. SECURING CLAMP SHALL BE S3500 (BEND AND HOUSING), SS#305 (SCREW).
3. HUB ADAPTOR SHALL BE PVC PER ASTM D3034 (SAME SIZE AS LATERAL PIPE).

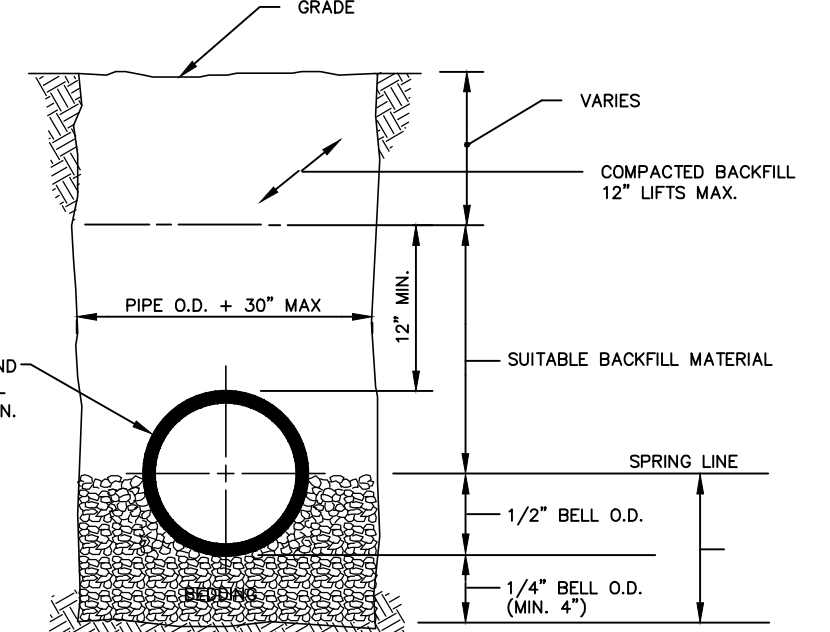


VINYL FENCE DETAIL
N.T.S.

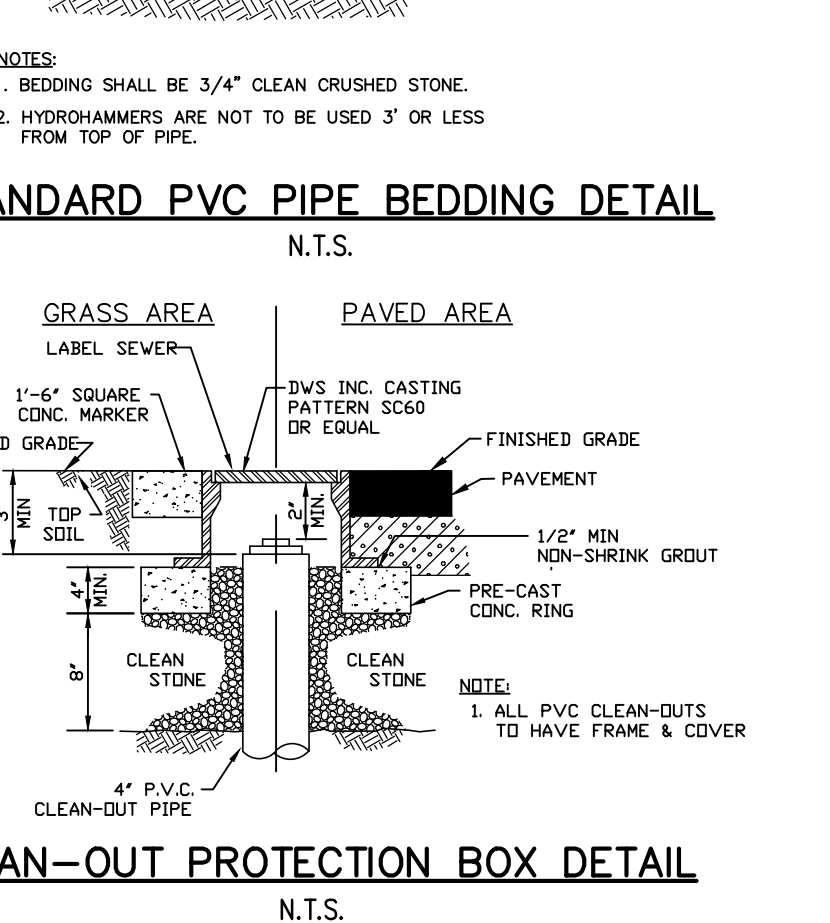


TRENCH AND PAVEMENT REPAIR DETAIL
N.T.S.

NOTES:
1. LIMIT OF PAYMENT FOR SERVICE CONNECTION, PAVING AND ADDITIONAL PAVEMENT EXCAVATION AND REPAIR:
2. MAXIMUM PAYMENT WIDTH FOR BORROW EXCAVATION SHALL BE 30" + PIPE O.D., WHEN PLACED IN A TRENCH WITH A DEPTH OF 10" OR LESS TO THE TOP OF THE PIPE. FOR TRENCHES OF GREATER DEPTH, THE MAXIMUM PAYMENT WIDTH FOR BORROW EXCAVATION SHALL BE 30" + PIPE O.D. + H/2.
3. AT MANHOLES, 6" BITUMINOUS STABILIZED BASE IS TO BE PLACED 6" BEYOND THE TRENCH LIMIT OR 6" BEYOND DAMAGED PAVEMENT BASE COURSE WHICHEVER IS GREATER.
4. SERVICE CONNECTION TRENCHES ARE TO BE REPAIRED AS ABOVE EXCEPT MINIMUM OVERLAY PAY WIDTH SHALL BE 6".
5. ANY SUPERFICIAL SURFACE DAMAGE CAUSED BY THE CONTRACTOR OUTSIDE THE LIMIT SHOWN SHALL BE PAVED WITH FAB-C-1. WHEN BASE COURSE OF EXISTING PAVEMENT IS DAMAGED BEYOND LIMIT SHOWN CONTRACTOR SHALL EXCAVATE 6" BEYOND DAMAGED AREA AND REPLACE IT WITH 6" BITUMINOUS STABILIZED BASE COURSE. NO ADDITIONAL PAYMENT WILL BE MADE FOR THIS PAVEMENT.
6. THICKNESS OF STABILIZED BASE SHOWN REPRESENTS THICKNESS REQUIRED AFTER MILLING IS COMPLETED. THE CONTRACTOR SHALL PAVE FLUSH WITH EXISTING PAVEMENT TO PROVIDE DRIVEABLE SURFACE FOR REQUIRED PERIOD PRIOR TO MILLING AND FINAL TOP COURSE INSTALLATION.



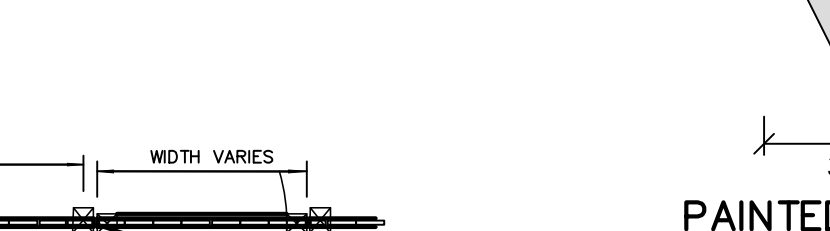
GRASS AREA AND PAVED AREA
N.T.S.



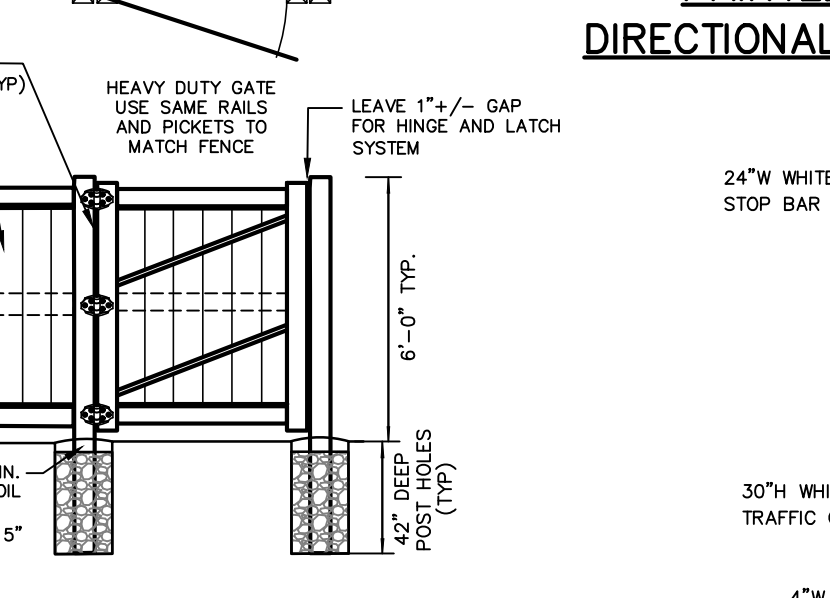
HANDICAP PARKING AND STRIPING DETAIL
N.T.S.



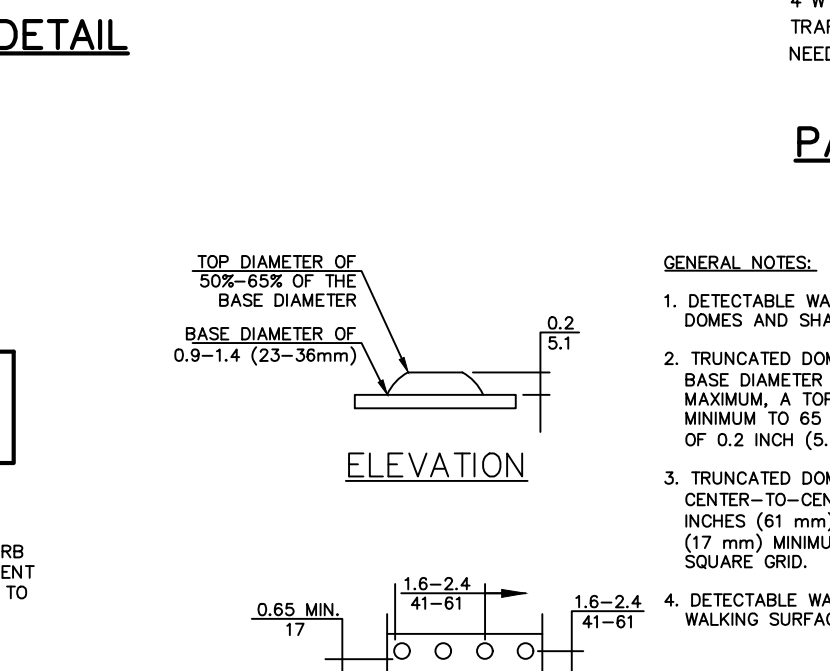
PAINTED TRAFFIC DIRECTIONAL FLOW ARROW
N.T.S.



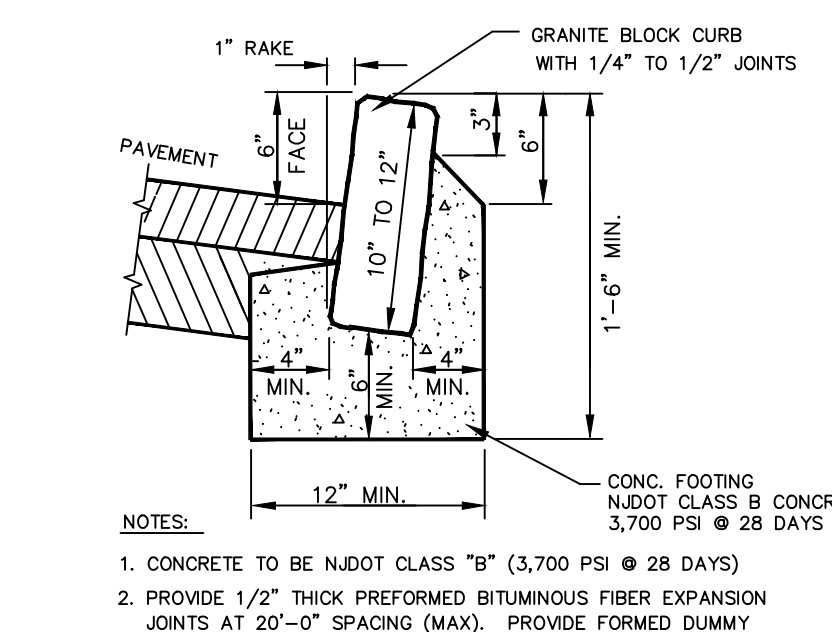
PAINTED STOP BAR
N.T.S.



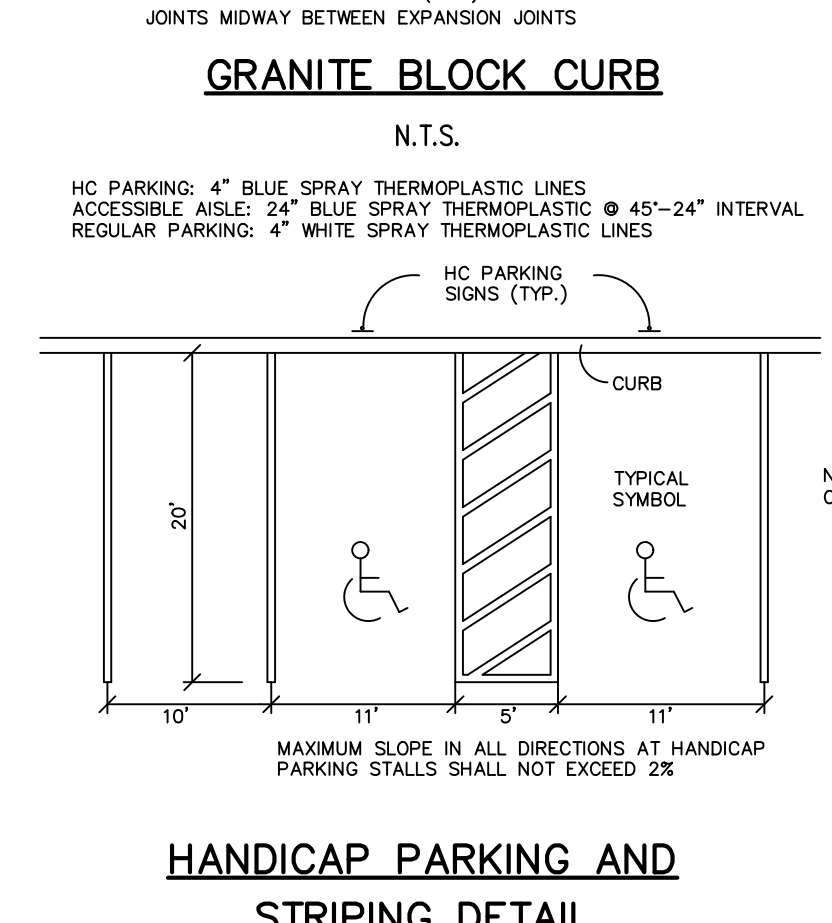
DETECTABLE WARNING SURFACE DETAIL
N.T.S.



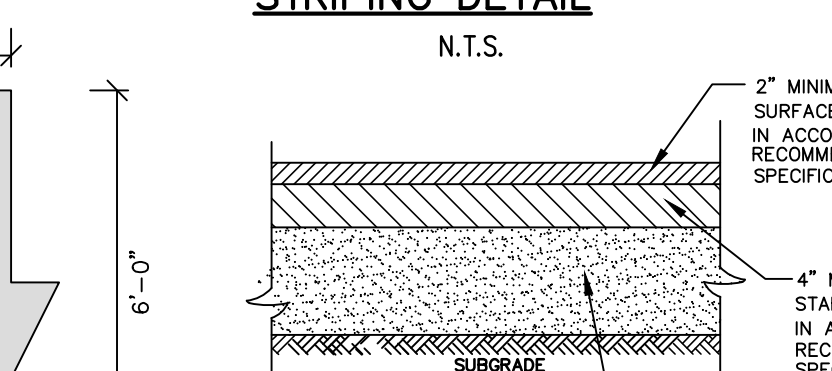
HANDICAP RAMP DETAIL
N.T.S.



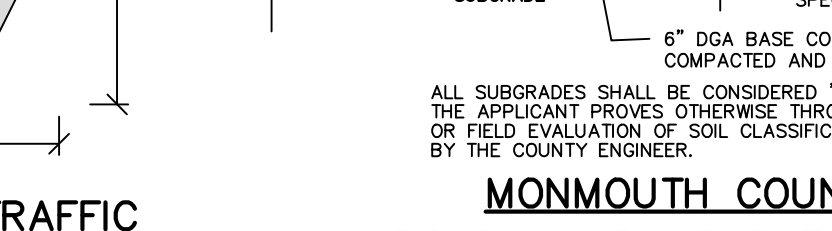
GRANITE BLOCK CURB
N.T.S.



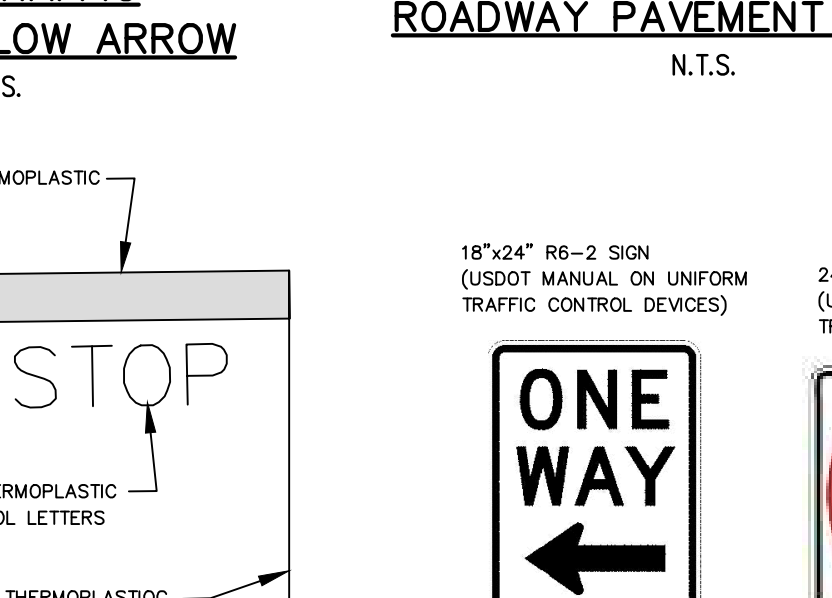
MONMOUTH COUNTY ROADWAY PAVEMENT SECTION
N.T.S.



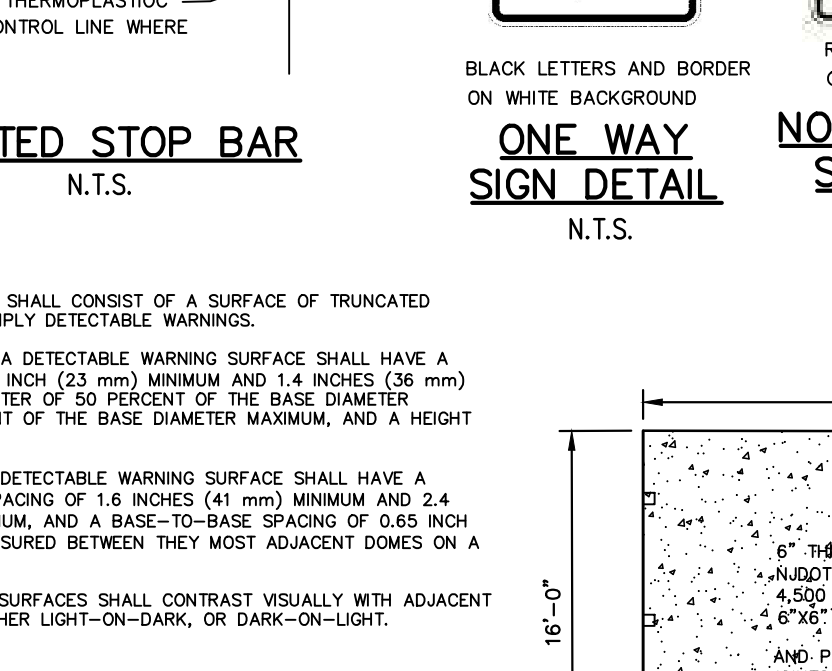
ACCESS DRIVE AND PARKING AREA TYPICAL PAVEMENT SECTION
N.T.S.



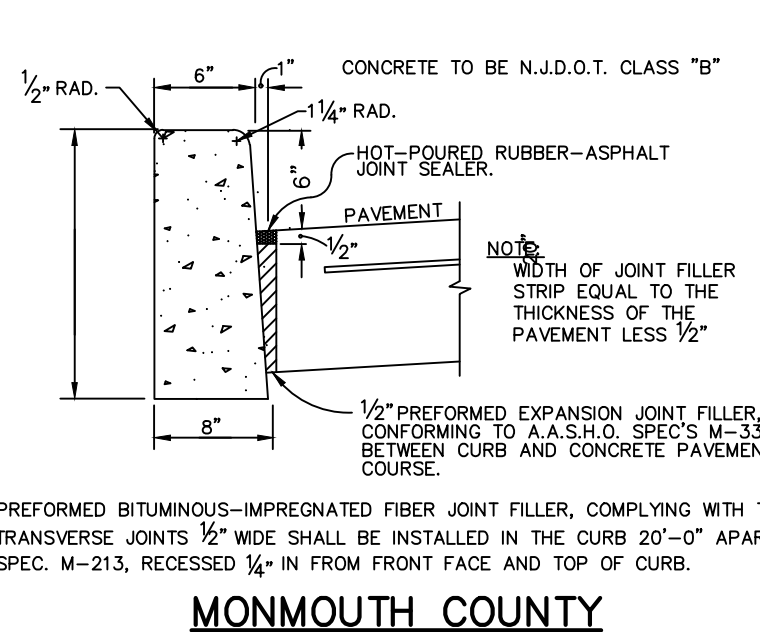
SCREENED TRASH ENCLOSURE
N.T.S.



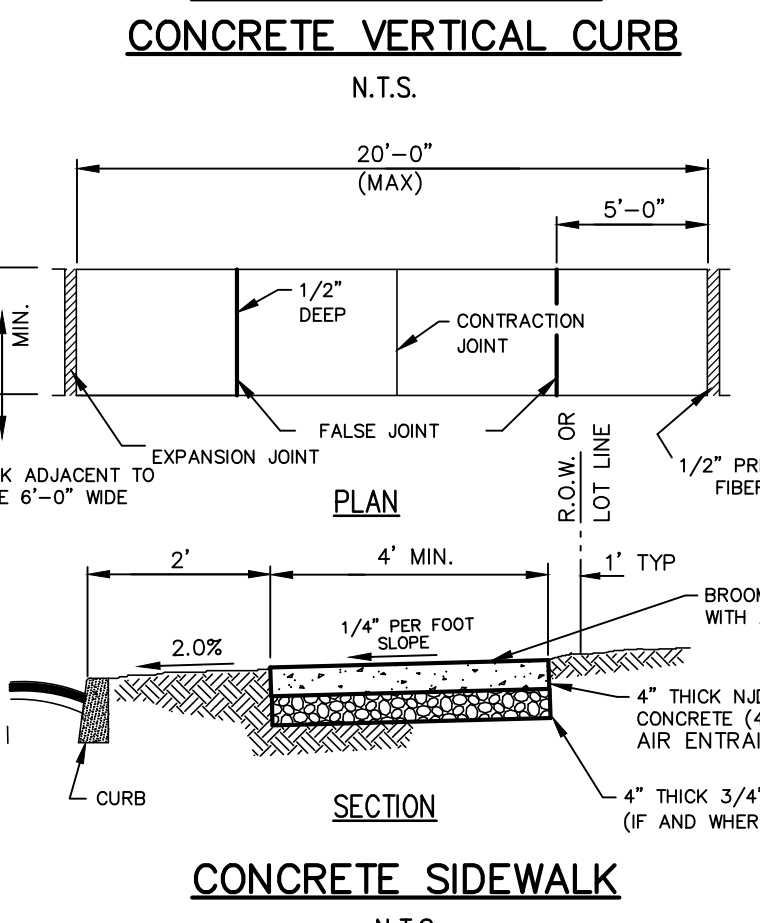
HANDICAP PARKING SIGN DETAIL
N.T.S.



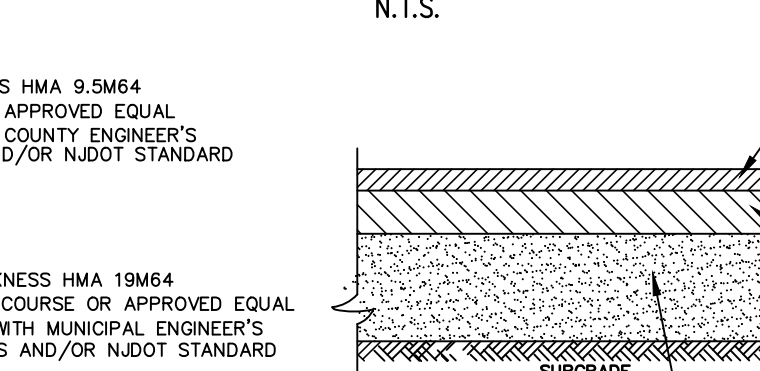
SIGN MOUNTING DETAIL
N.T.S.



MONMOUTH COUNTY CONCRETE VERTICAL CURB
N.T.S.



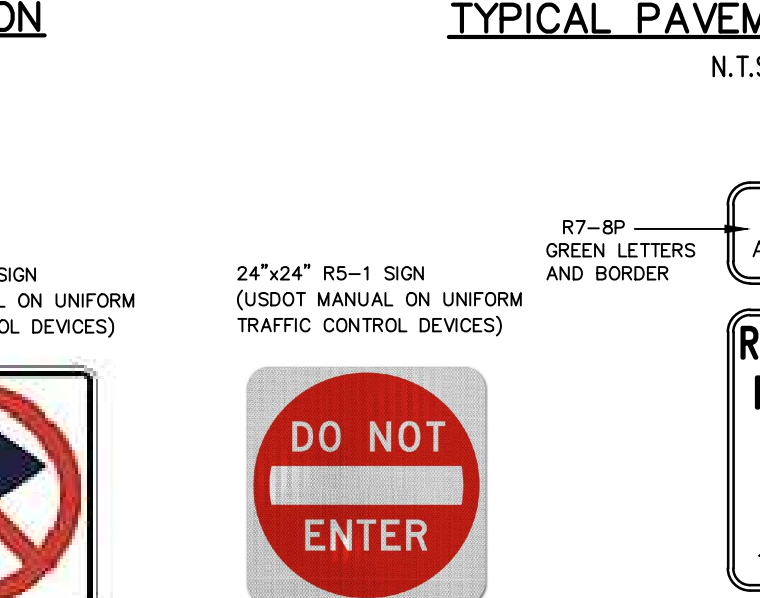
CONCRETE DRIVEWAY APRON DETAIL
N.T.S.



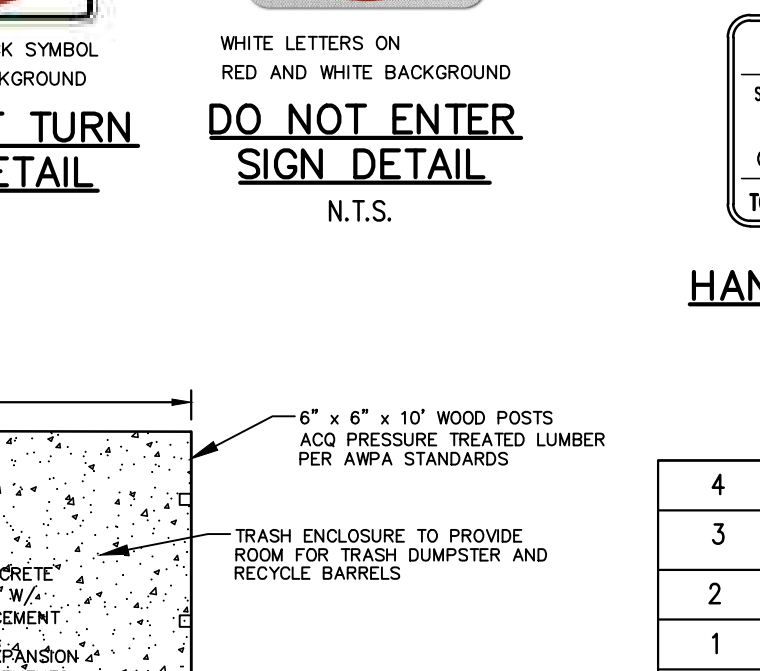
CONCRETE SIDEWALK
N.T.S.



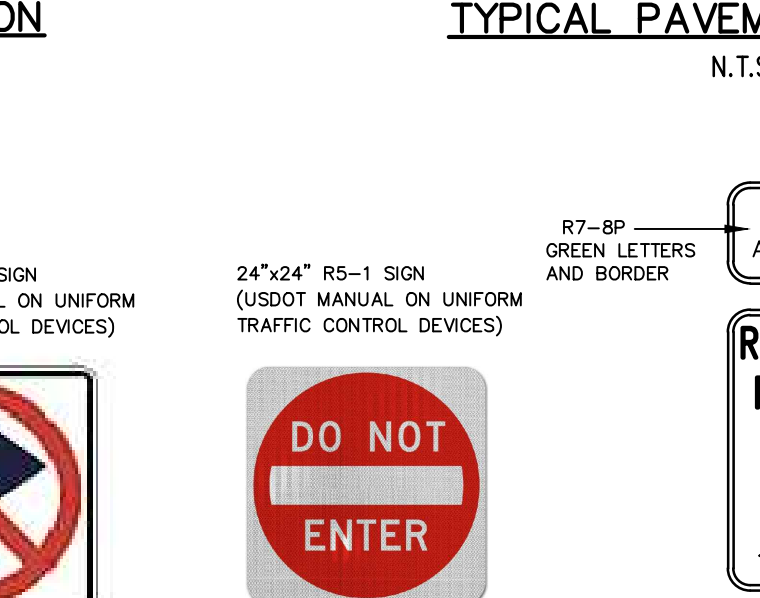
TRANSITION BETWEEN GRANITE BLOCK AND CONCRETE CURB
N.T.S.



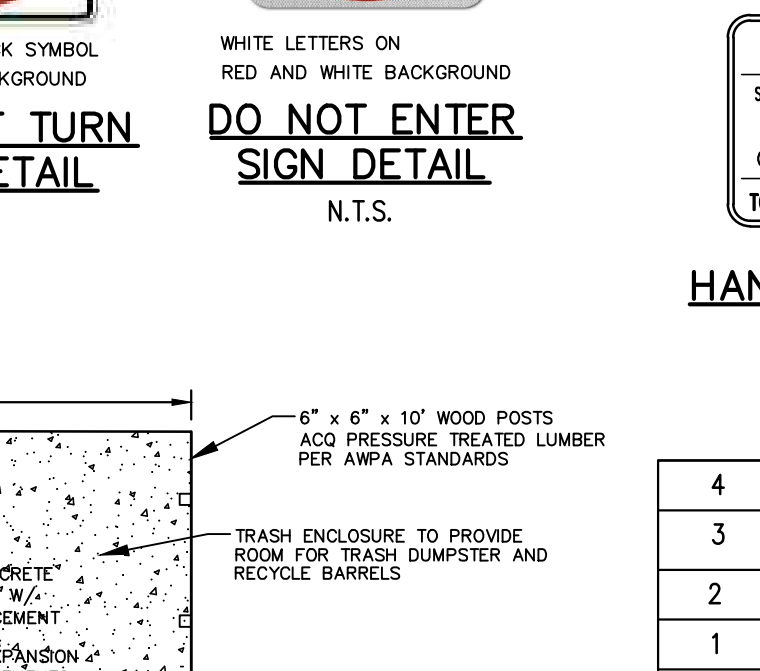
DEPRESSED CURB DETAIL
N.T.S.



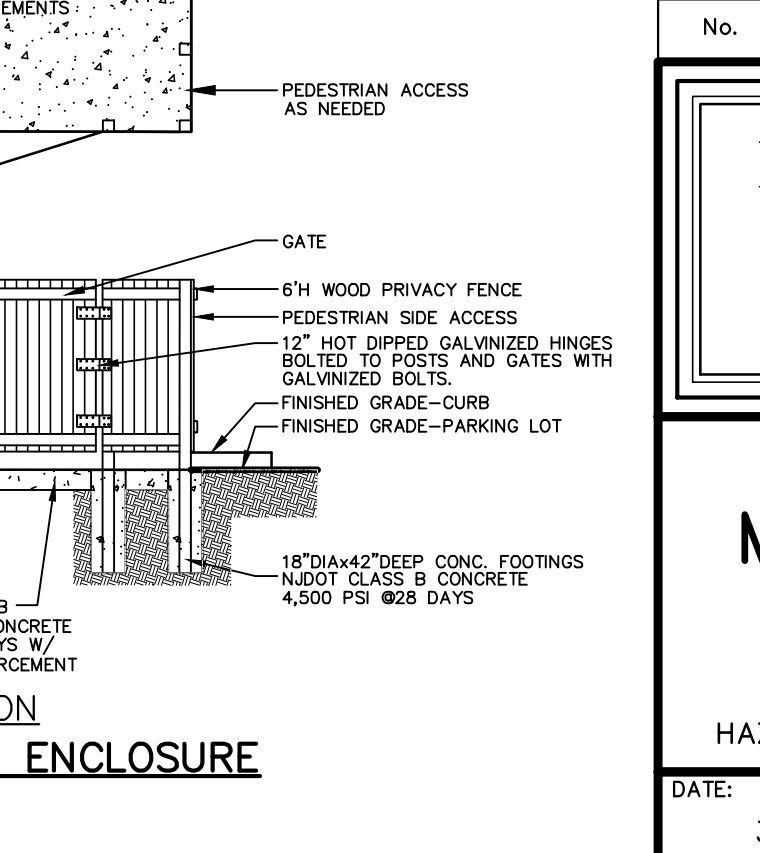
MONMOUTH COUNTY ROADWAY PAVEMENT SECTION
N.T.S.



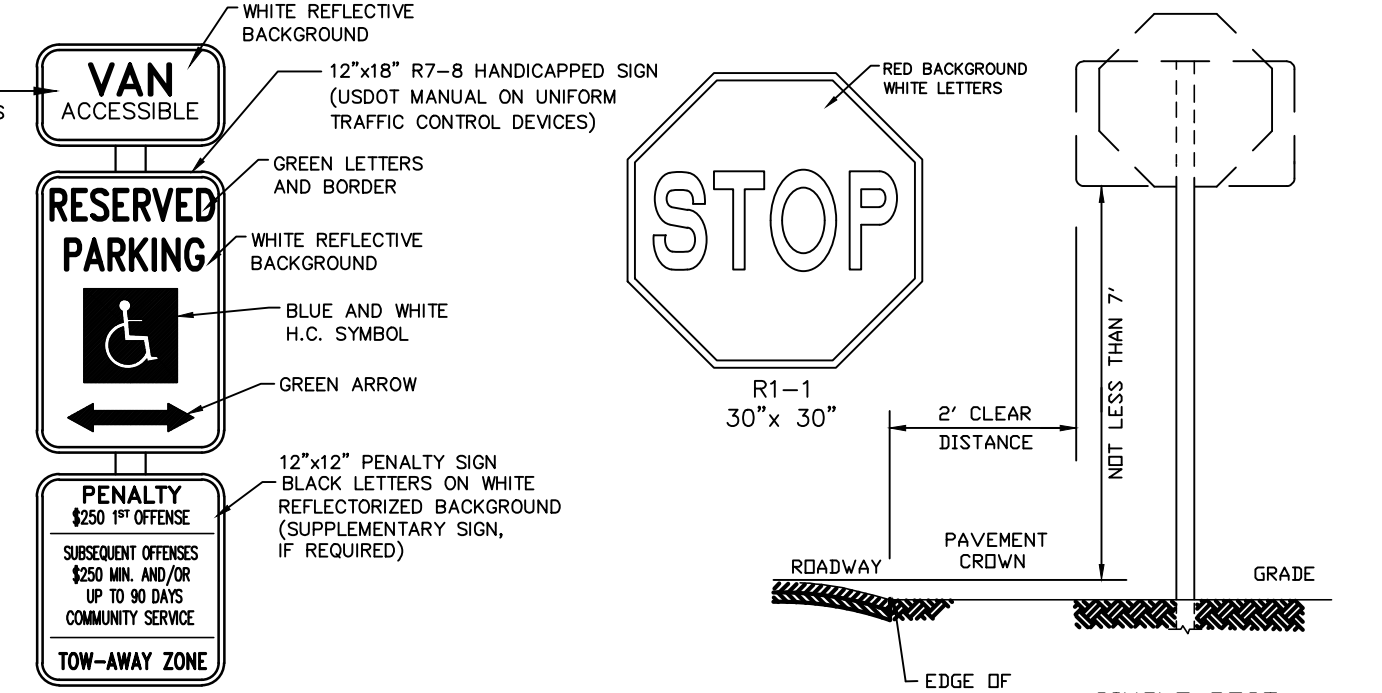
ACCESS DRIVE AND PARKING AREA TYPICAL PAVEMENT SECTION
N.T.S.



HANDICAP PARKING SIGN DETAIL
N.T.S.



SIGN MOUNTING DETAIL
N.T.S.



HANDICAP PARKING SIGN DETAIL
N.T.S.

| No. | DATE | REVISION | BY |
|-----|----------|--|-----|
| 4 | 6-01-24 | REV. FOR TOWNSHIP LAND USE BOARD - RESOLUTION COMPLIANCE | ARS |
| 3 | 12-01-23 | REV. FOR TOWNSHIP LAND USE BOARD - RESOLUTION COMPLIANCE | ARS |
| 2 | 7-22-22 | REV. PER TOWNSHIP ENGINEER'S 6-30-21 COMPLETENESS REVIEW | ARS |
| 1 | 10-01-21 | REV. PER TOWNSHIP ENGINEER'S 6-30-21 COMPLETENESS REVIEW | ARS |

EASTERN CIVIL ENGINEERING, LLC
CIVIL ENGINEERING - SURVEYING & MAPPING - LAND USE PLANNING - SITE DESIGN

31 GRAND TOUR , HIGHLANDS NJ 07732 PHONE: 732.872.7736

CONSTRUCTION DETAILS FOR

MICHAEL MARGARELLA
BLOCK 47 LOTS 2, 3, 5 & 6
TAX MAP SHEET No. 15

HAZLET TOWNSHIP, MONMOUTH COUNTY, NEW JERSEY

ANDREW R. STOCKTON
PROFESSIONAL ENGINEER & LAND SURVEYOR
NEW JERSEY LIC. NO. 35405

| DATE: | SCALE: | DESIGN BY: | PROJECT NO.: | SHEET NO.: |
|---------|----------|------------|--------------|------------|
| 3-01-21 | AS SHOWN | ARS | 2001813 | 9 of 9 |