
**FOR SALE**

# FORMER BANK BRANCH

## 3,211 SF

### Key Features

- 3,211 SF free-standing building on 0.68 acres
- Excellent location on Joy Road
- Built in 1966
- Zoned CB3, General Commercial Business, per city records
- Former bank branch with drive-through lanes
- Ample surface parking

Frontage	Land	Total GLA	Asking Price
269 feet	0.58 acres	3,211 SF	\$575,000



**Garrett Keais**  
Executive Managing Director

+1 248 358 6112  
garrett.keais@cushwake.com

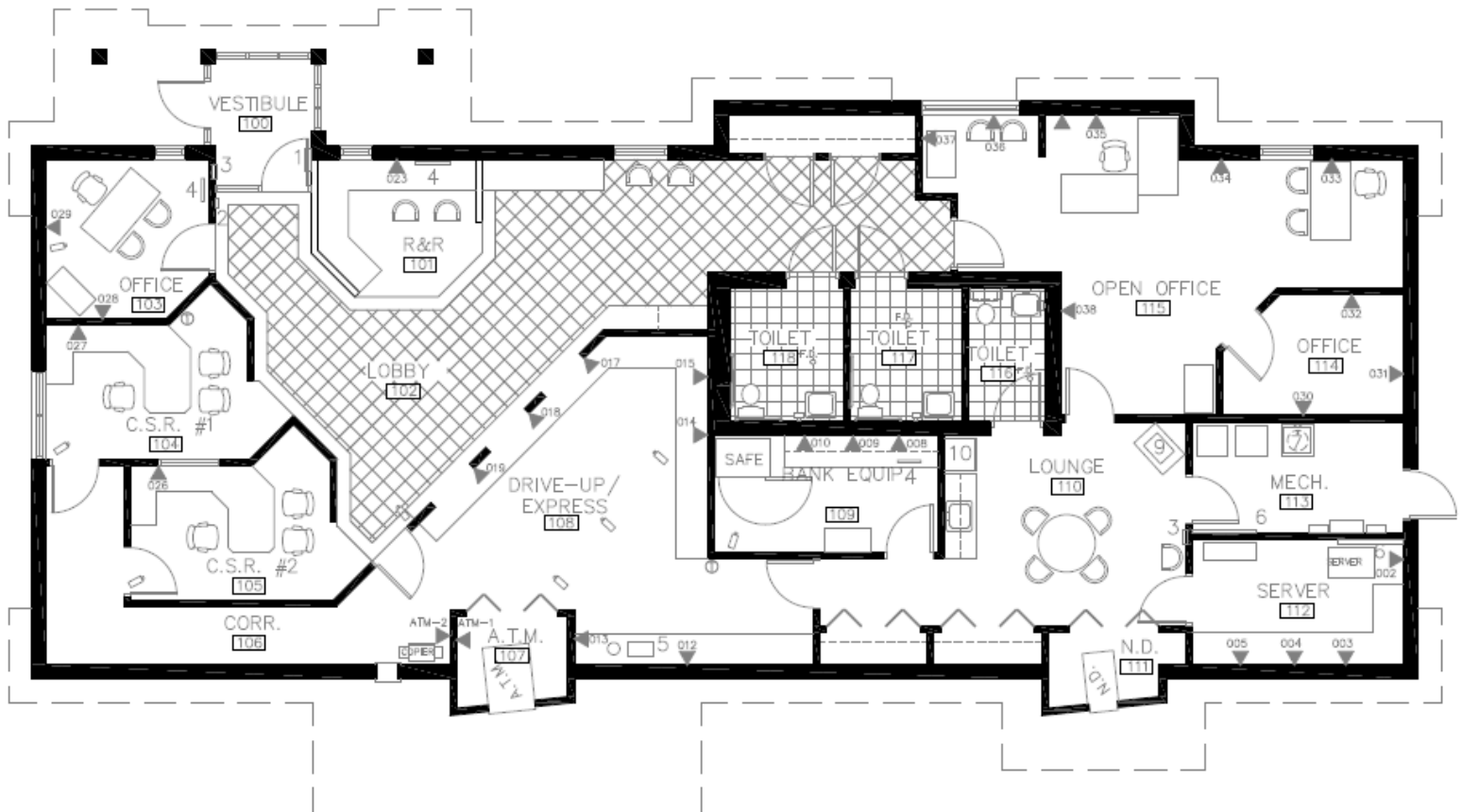
**John VanNoord**  
Senior Associate

+1 248 358 6106  
john.vannoord@cushwake.com

[cushmanwakefield.com](http://cushmanwakefield.com)



**Floor Plan**



**Garrett Keais**  
Executive Managing Director  
248 358 6112  
garrett.keais@cushwake.cm

**John VanNoord**  
Senior Associate  
248 358 6106  
john.vannoord@cushwake.com

[cushmanwakefield.com](http://cushmanwakefield.com)