

Loxahatchee Retail

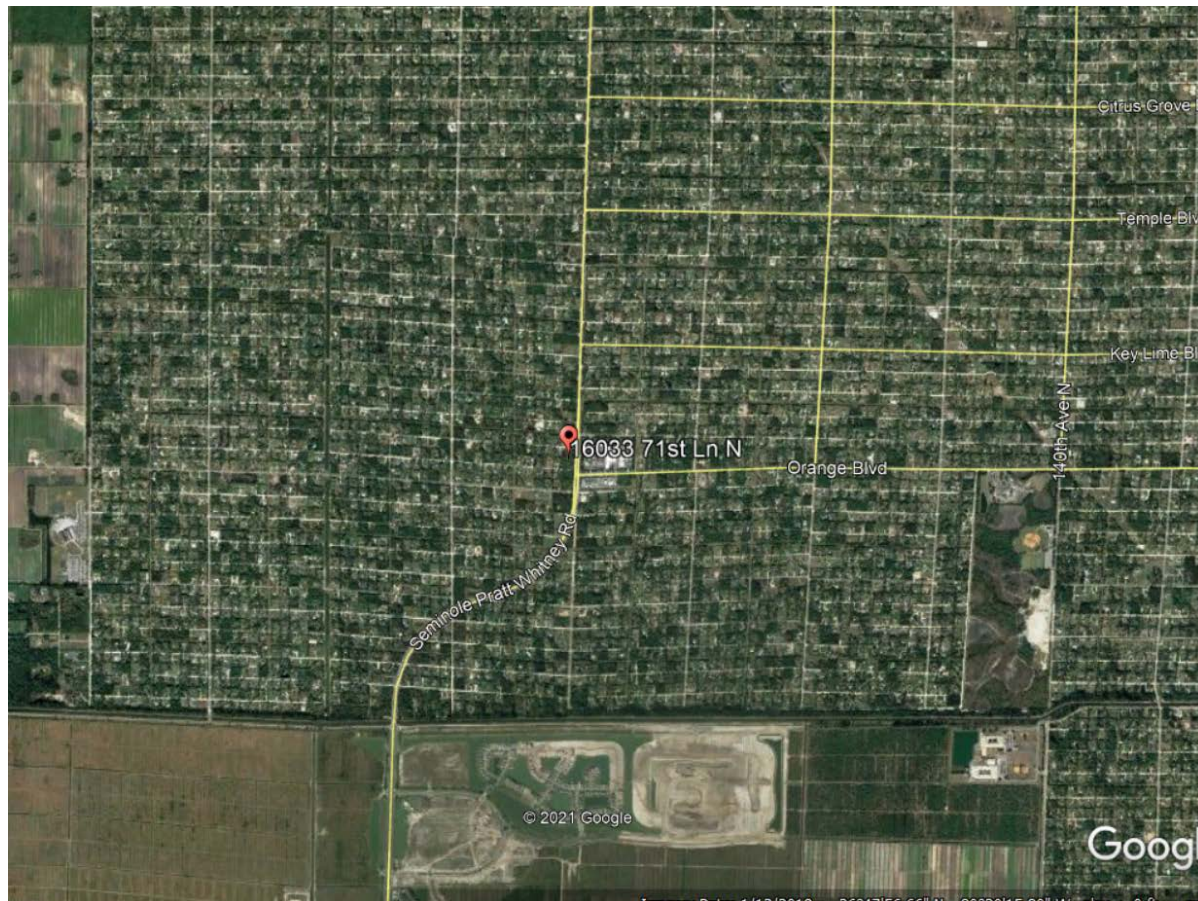
2.09 Acres on Seminole Pratt Whitney Road,
Loxahatchee, FL 33470



Commercial Real Estate

LAND HIGHLIGHTS

- 2.09 Acres located in a densely populated residential area
- Across from Publix
- Will be the prime corner in newly approved commercial rezoning
- Approximately 260 feet of frontage on SPW Rd
- Low competition

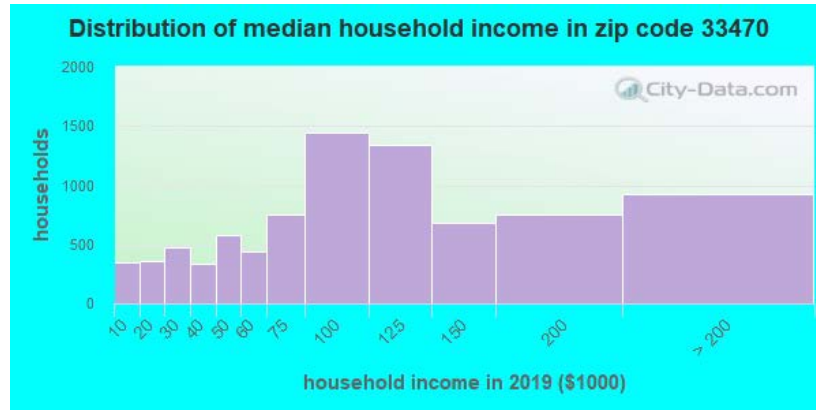


ASKING PRICE DESCRIPTION

ASKING PRICE	\$TBD
PRICE PER SF	\$TBD



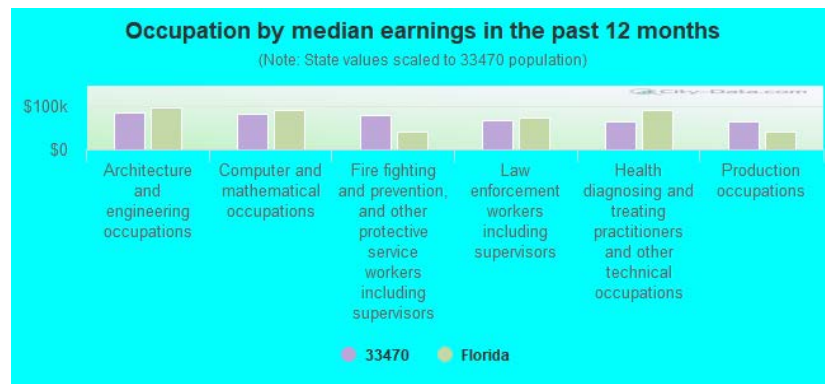
Household Income for Citizens of Loxahatchee



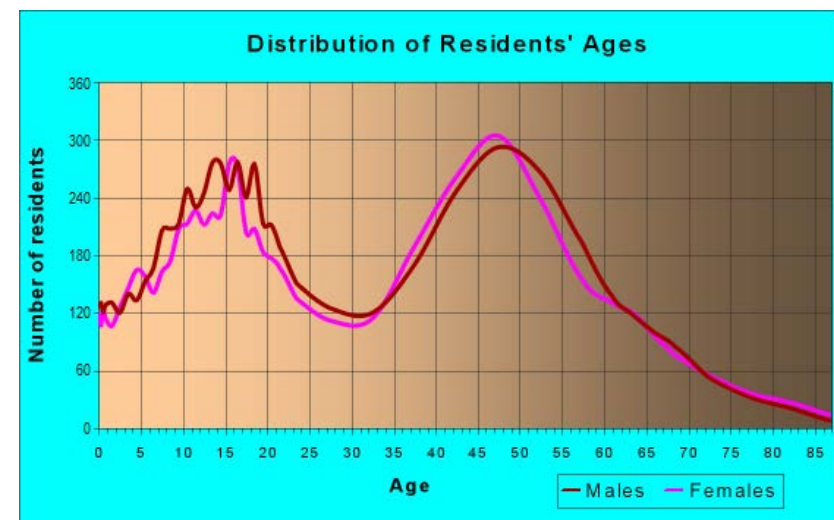
Average Commute Time for Loxahatchee Residents



Loxahatchee Employment by Occupation



Loxachatchee Age Range by Gender



72nd Rd N

Loxahatchee Retail

71st Pl N

16033 71st Ln N

71st St N

7015 St N



Exclusively Marketed by:

Thomas Schmidt

(561) 353-7804

tom@sitecre.com



Commercial Real Estate

© 2021 Google

Go