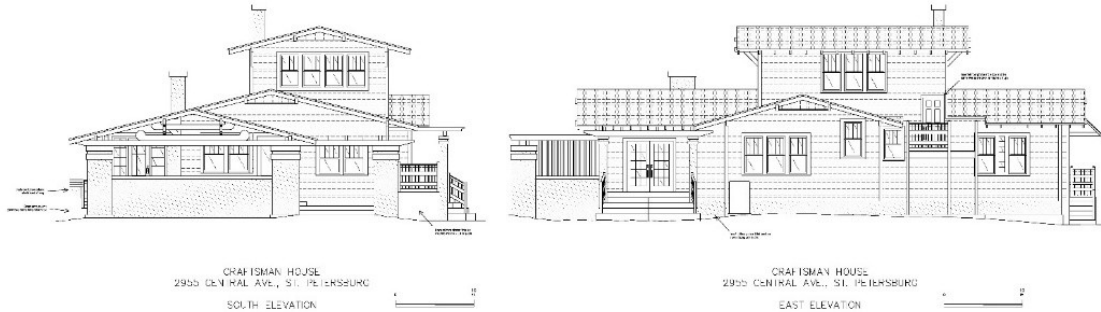




CRAFTSMAN HOUSE



Corner Location: 2959 Central Ave, St. Petersburg, FL 33713

For Sale: 2,614 Lot 9 with Permanent access to 2,625 SF Courtyard & 327 SF Porch

For Sale or Build-to-Suit - 1,050 SF 1st Floor. Location: Next door to The Historic Craftsman House Restoration Development. Free Standing at NE Corner of Central Ave and 30th. **Site has 119 parking spaces within one block. Perfect Location for High-end coffee, and smoothie bar, “Hybrid” Concepts, Wellness and Functional Foods, Sandwich, Salad, Soup, Alcoholic or Non-Alcoholic Beverages.**

A VENUE FOR: RETAIL, DINING, ARTS, YOUR BUSINESS!

The *Craftsman House* is centrally located on Central Avenue and 30th St., St. Petersburg, known for its bustling atmosphere and eclectic mix of shops, cafes, and cultural destinations. As part of the Grand Central District, the Kenwood neighborhood as well as the Warehouse Arts District, it is surrounded by a thriving community of residents and businesses, the location attracts a steady flow of foot traffic and loyal patrons.

HISTORY

For 23 years the **Craftsman Courtyard** has been home to *The Craftsman House Gallery (Open through 2025)*. Owner and curator Jeff Schorr has successfully run *The Craftsman House* as an arts & crafts gallery, pottery studio, and an Airbnb unit. The house/gallery was built in 1918, as the model home for the Historic Kenwood neighborhood of St. Petersburg. It is currently a member of the Historic Kenwood Association, The Grand Central District, and the Warehouse Arts District.

VISION

The *Craftsman House* is a destination for Pinellas County visitors, and a local hangout for the neighborhoods of the Grand Central District, Warehouse Arts District and Kenwood Arts Enclave. As a retail, dining, art gallery or F & B location, any entity located in the *Craftsman House* will be a contributor to marketing the successful The Grand Central District.

Lot 10

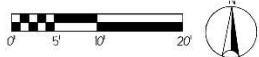
30th Street N

NEW PARKING AREA NOT INCLUDED

CRAFTSMAN HOUSE

Central Avenue

(12) *PODOCARPUS* 'PRINGLES' 3G



Tommy Todd
Landscape & Design

Lic. # C-7428

Bob Roberts
2955 Central Ave
St Petersburg, FL 33713

phone: 727-477-6199

cct

smoke

diameters

done by JTM

checked by:

scale $1' = 10'$

date:

reborn f

reason for

www.tammytoddlandscape.com

5717 Haines Rd. N. | St. Petersburg, FL 33714

727.535.6453 office | 727.527.4333 fax

This document, information and design are proprietary data
exclusive property of Tammy Todd Landscape & Design. I
or use of this document is prohibited without written permission.



Creative Hardscape
Concepts, Inc.

Lic # C-10404

For more information, For Sale or For Lease, Contact:



R B Roberts Solutions - R B Roberts Solutions

Real Estate Developer Powered By: Impact Realty Realtor®

Bob Roberts License #3632841 Phone: 727-477-6199 E-mail: rbr@rbroberts.com