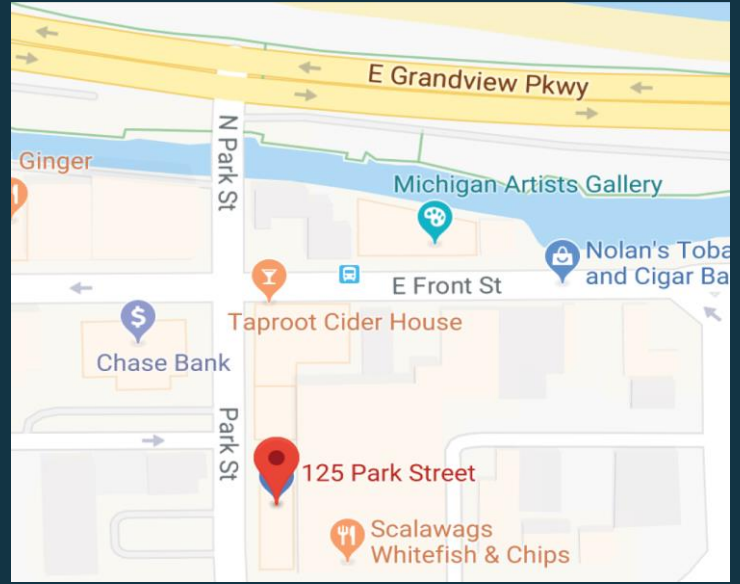




**SNOWDEN**  
C o m p a n i e s

Available for Lease  
125 S Park Street  
Traverse City, MI 49684



## Available for Lease

Suite #280 639 sq. ft. 2nd Floor Office

Class "A" office space in a prime downtown location

Highly visible & centrally located  
near shops, theatres, dining, banks,  
the courthouse, &  
the Park Place Hotel

Adjacent to the Hardy Parking Deck

*For questions, please contact:*

*Jerry Snowden  
at 231.932.1700 ext 230 or via cell 231.632.6007*

*jsnowden@snowdencompanies.com*

*125 Park St. Suite 290  
Traverse City, MI 49684*

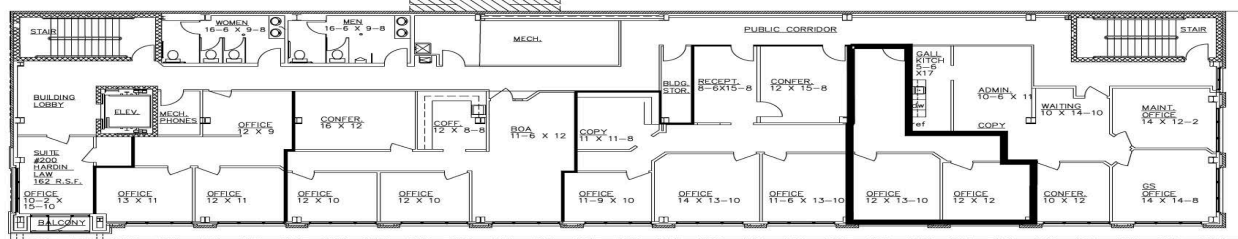
*www.snowdencompanies.com*

# Radio Centre II

125 Park St is a Class "A" office building located in the heart of downtown Traverse City immediately adjacent to a 529-vehicle parking deck.

In addition to its superior location, the building offers the following:

- High profile corporate image close to restaurants, banks, shops, courthouse, Park Place Hotel, Grand Traverse Bay
- Individual after-hours entry code access with remote visitor telecom system
- Remote-monitored heating and cooling for trouble-free temperature control
- Deluxe suite entry package: 10-light cherrywood doors; side lights; brass hardware; parabolic lighting
- Professional lobby with local artwork and live plants
- Wonderful views, many windows, and plenty of natural light
- Full sprinkle fire protection system with visual and audible fire alarm
  - Electronic security with mag locks at all access points
  - On-site management; 24-hour on-call service
  - Cable and/or fiberoptic internet available
  - ADA compliant. Handicap accessible
  - Optional reserved parking



**SNOWDEN COMPANIES**  
**RADIO CENTRE II**  
**SECOND FLOOR PLAN**  
(ALL DIMENSIONS ARE APPROXIMATE)

SUITE #247 APPROX. 247 R.S.F. 9-T-2000 DIXIE EULE  
 SUITE #250 APPROX. 176 R.S.F. 9-T-2000 EDWARD JONES  
 SUITE #270 APPROX. 1,482 R.S.F. 9-T-2000 ONLY ALPHA  
 SUITE # 280 APPROX. 639 R.S.F. 9-T-2000 HOWARD ENERGY  
 SUITE #280 APPROX. 1,125 R.S.F. 9-T-2000 SNOWDEN

**125 PARK STREET**  
**TRAVERSE CITY, MI.**

**Suite 280**  
**Approx. 639 RSF**

