

5601 Lindero Canyon Road

Westlake Village, CA 91362



For lease

Storage, Parking, Standard Office - New ownership open to all uses

- **Class A office space available for lease in the heart of Westlake Village**
- **High visibility on Lindero Canyon Road, and offers excellent access to US-101**
- **Short-term deals with immediate occupancy**
- **Building has newly renovated lobbies and corridors**
- **Ownership flexible with the use**
- **Abundance of nearby amenities including the Four Seasons Westlake Village hotel across the street, and numerous restaurants, retailers, banks and golf courses**
- **3.0/1,000 free surface parking available**

JIM LINDVALL

Managing Director
+1 818 531 9678
jim.lindvall@jll.com
License #01012372

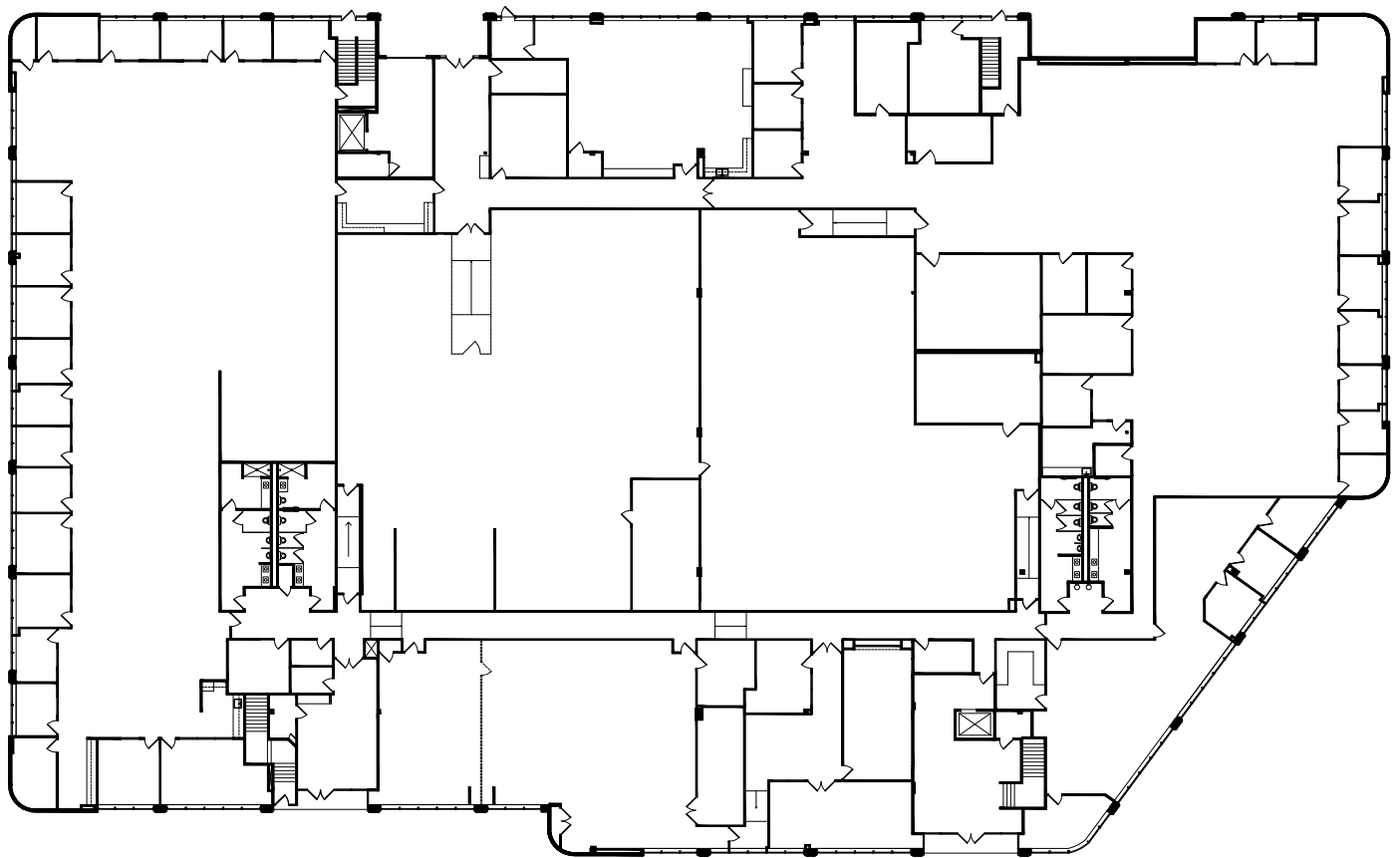
CHLOE SANCHEZ

Senior Associate
+1 747 234 3553
chloe.sanchez@jll.com
License #02109571



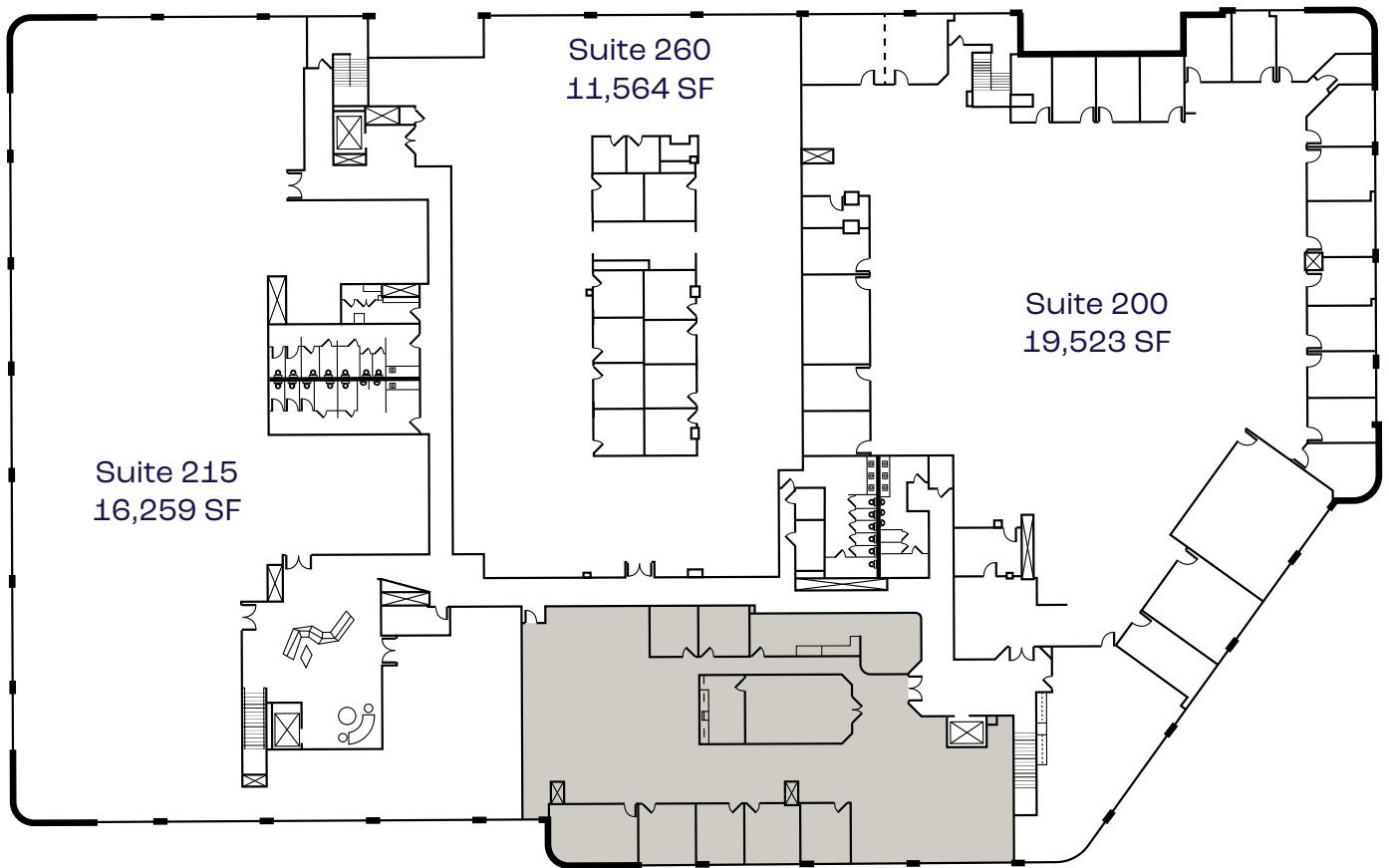
First floor

Full floor available
52,117 SF

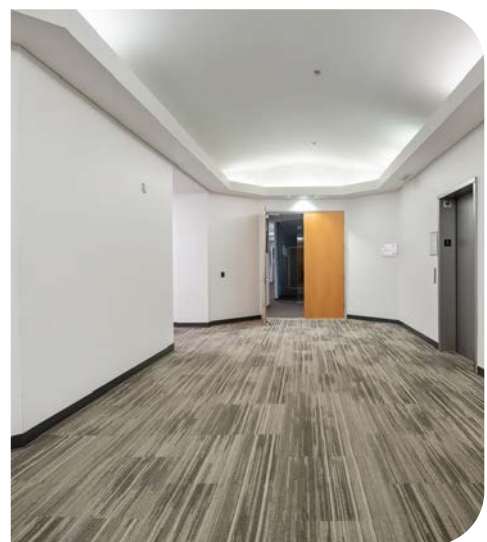


Second floor

Available suites



Project Photos



5601 Lindero Canyon Road

Westlake Village, CA 91362

JIM LINDVALL

Managing Director
+1 818 531 9678
jim.lindvall@jll.com
License #01012372

CHLOE SANCHEZ

Senior Associate
+1 747 234 3553
chloe.sanchez@jll.com
License #02109571

Although information has been obtained from sources deemed reliable, JLL does not make any guarantees, warranties or representations, express or implied, as to the completeness or accuracy as to the information contained herein. Any projections, opinions, assumptions or estimates used are for example only. There may be differences between projected and actual results, and those differences may be material. JLL does not accept any liability for any loss or damage suffered by any party resulting from reliance on this information. If the recipient of this information has signed a confidentiality agreement with JLL regarding this matter, this information is subject to the terms of that agreement. ©2024 Jones Lang LaSalle Brokerage, Inc. All rights reserved.

