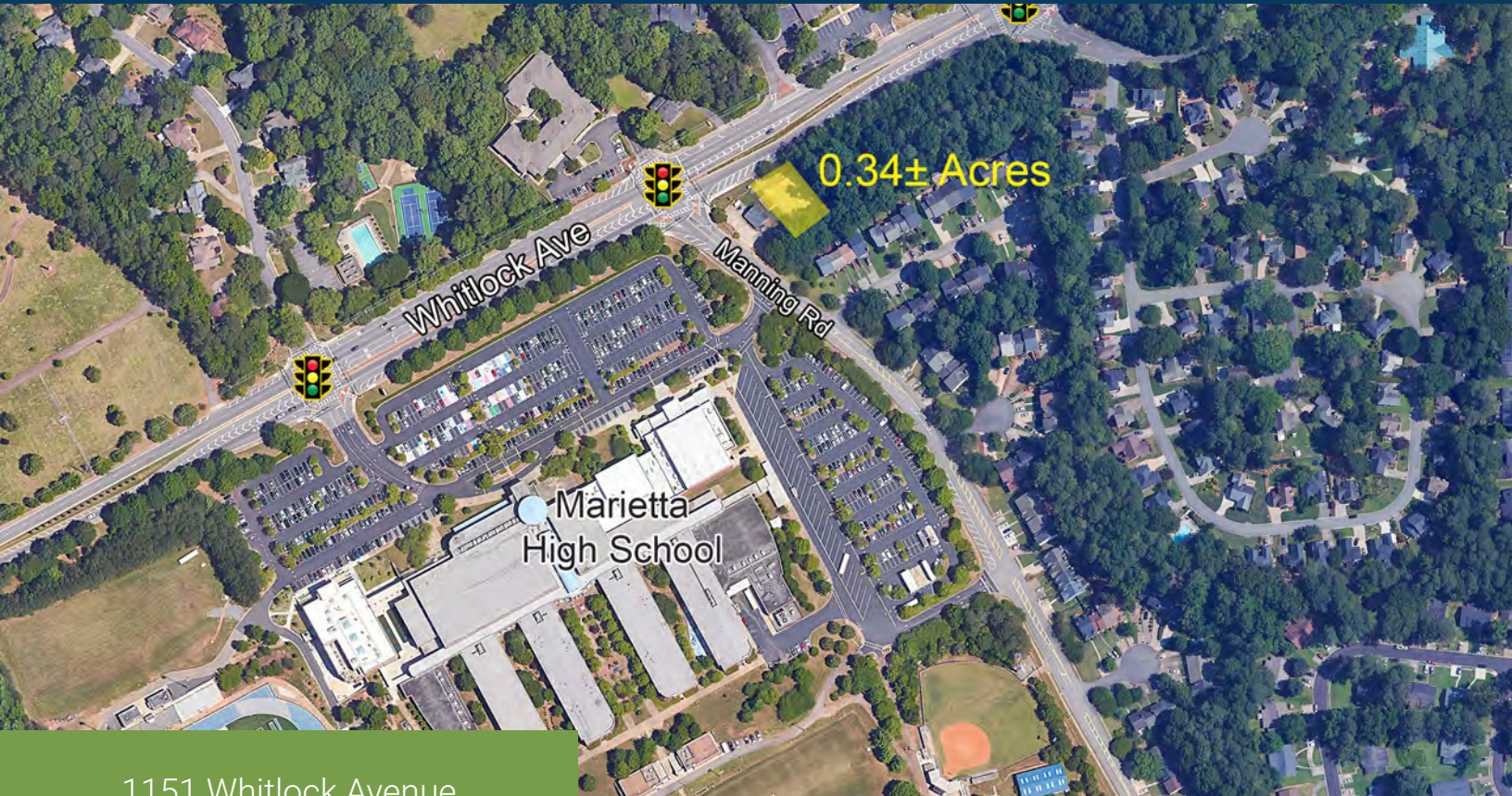


Commercial Land For Sale in Marietta - West Cobb

0.340± AC - Zoned NRC

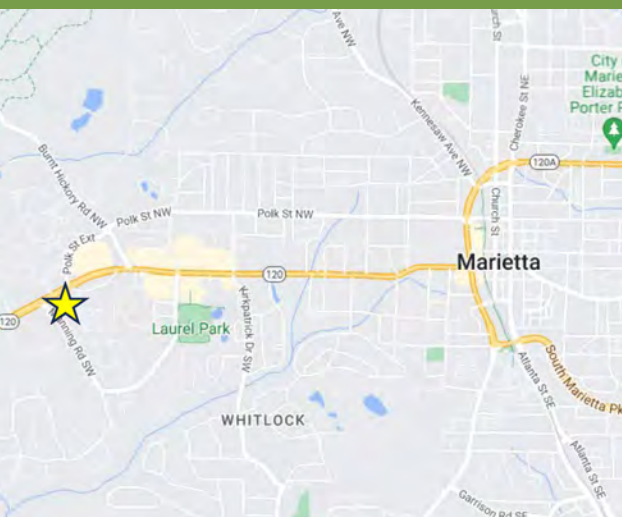
1151 Whitlock Avenue, Marietta, GA 30064



1151 Whitlock Avenue
Marietta, GA 301064

Property Details

- 0.340± acre tract located on Whitlock Avenue, just west of the Marietta Square
- 108.27'± of frontage along Whitlock Avenue
- Zoned NRC (Neighborhood Retail Commercial), uses include light office and retail
- 26,500 cars per day on Whitlock Ave, west of site; 24,600 cars per day on Whitlock Ave, east of site
- The property is being marketed without an asking price. Please inquire to discuss pricing.



Dan Buyers
770.596.2629
tdb@mcwrealty.com

Peyton McWhirter
678.385.2705
pmm@mcwrealty.com

McWhirter Realty Partners, LLC
300 Galleria Parkway, Suite 300
Atlanta, GA 30339
770.955.2000
www.mcwrealty.com



McWhirter
Commercial Real Estate Since 1981

No warranty or representation, express or implied, is made as to the accuracy of the information contained herein, and same is subject to errors, omissions, change of price, rental or other conditions, withdrawal without notice, and to any special listing conditions, imposed by our principals.

Commercial Land For Sale

0.340± AC - Zoned NRC

1151 Whitlock Avenue, Marietta, GA 30064



Area Demographics

	<u>1 mile</u>	<u>3 miles</u>	<u>5 miles</u>
<u>Population:</u>			
2029 Projection	6,570	60,008	182,757
2024 Estimate	6,494	58,722	178,835
2020 Census	6,557	56,207	171,133
Daytime Population	2,196	47,518	114,772
<u>Income:</u>			
Average Household Income	\$147,414	\$115,071	\$101,264
Median Household Income	\$123,491	\$86,111	\$75,894

Dan Buyers
770.596.2629
tdb@mcwrealty.com

Peyton McWhirter
678.385.2705
pmm@mcwrealty.com

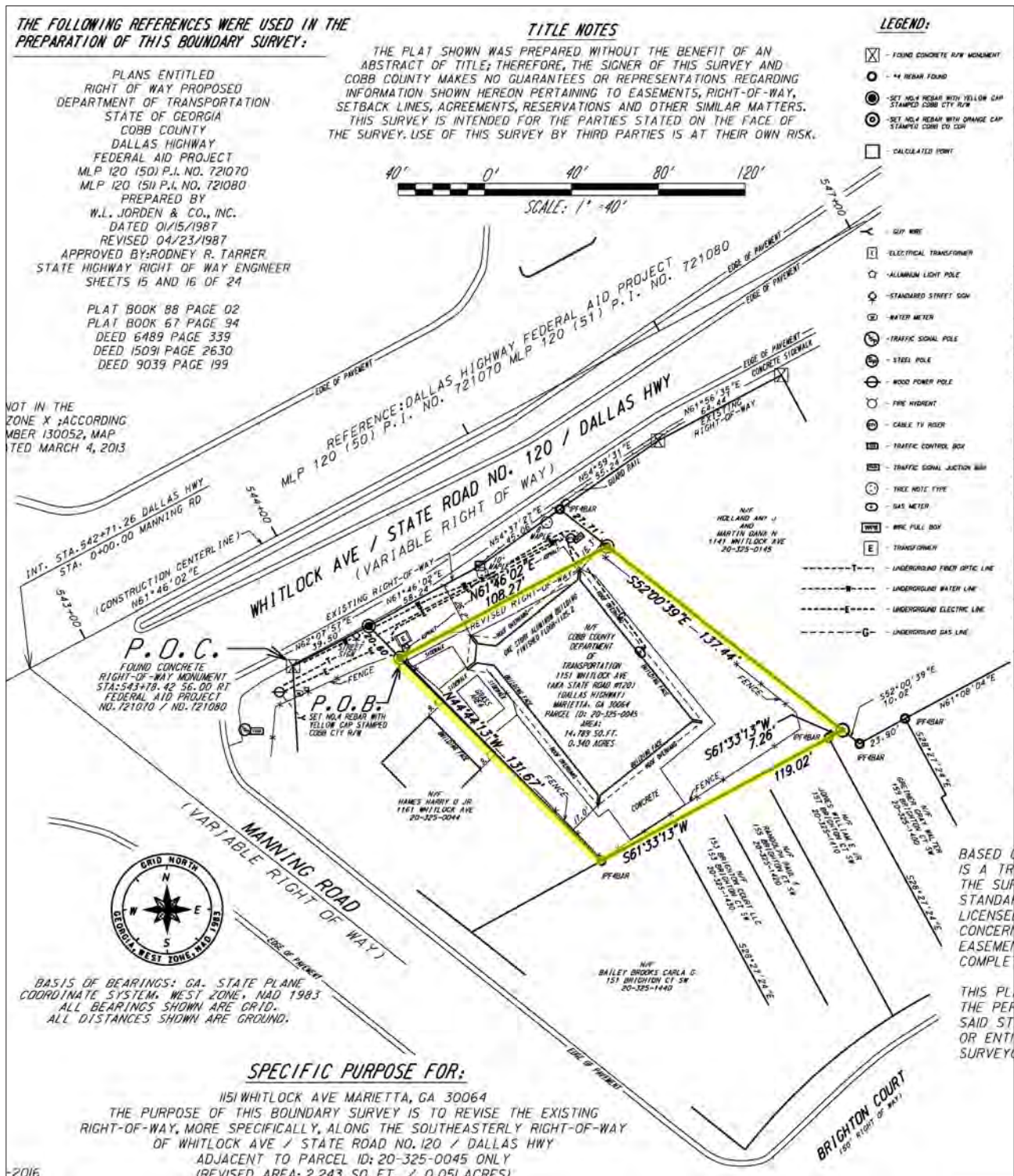
McWhirter Realty Partners, LLC
300 Galleria Parkway, Suite 300
Atlanta, GA 30339
770.955.2000
www.mcwrealty.com



McWhirter
Commercial Real Estate Since 1981

No warranty or representation, express or implied, is made as to the accuracy of the information contained herein, and same is subject to errors, omissions, change of price, rental or other conditions, withdrawal without notice, and to any special listing conditions, imposed by our principals.

1151 Whitlock Avenue, Marietta, GA 30064



Dan Buyers
770.596.2629
tdb@mcwrealty.com

Peyton McWhirter
678.385.2705
pmm@mcwrealty.com

McWhirter Realty Partners, LLC
300 Galleria Parkway, Suite 300
Atlanta, GA 30339
770.955.2000
www.mcwrealty.com



McWhirter
Commercial Real Estate Since 1981

No warranty or representation, express or implied, is made as to the accuracy of the information contained herein, and same is subject to errors, omissions, change of price, rental or other conditions, withdrawal without notice, and to any special listing conditions, imposed by our principals.

Commercial Land For Sale

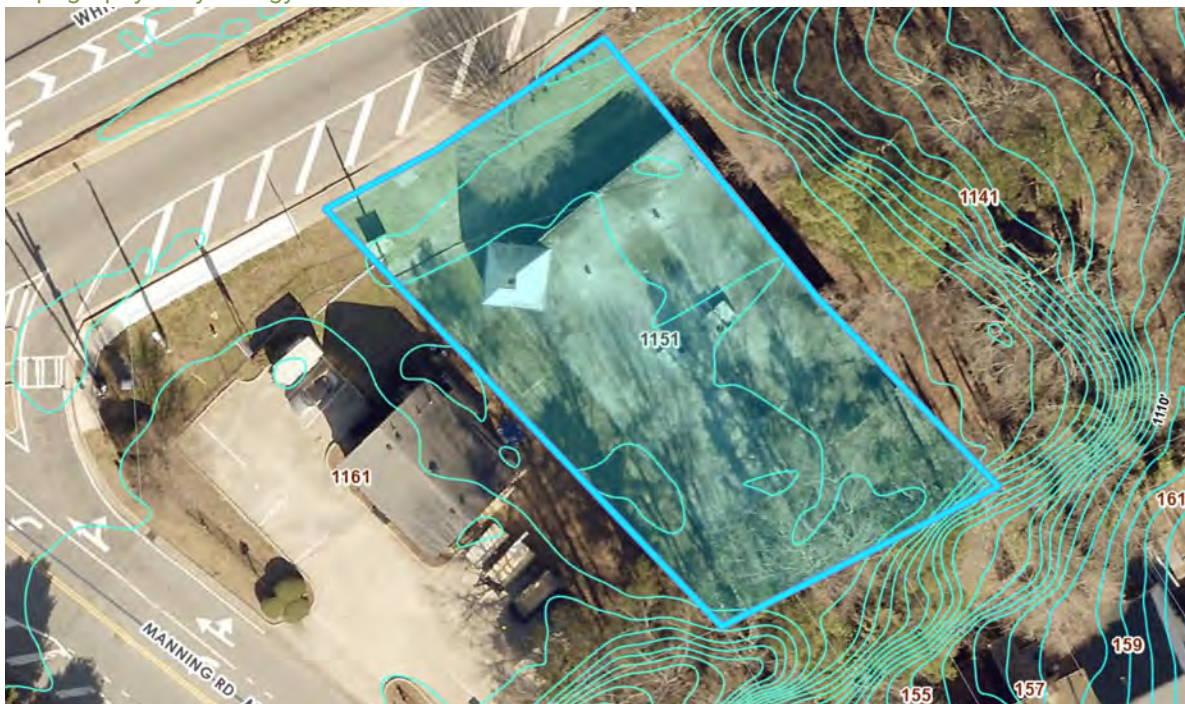
0.340± AC - Zoned NRC

1151 Whitlock Avenue, Marietta, GA 30064

Tax Aerial



Topography & Hydrology



Dan Buyers
770.596.2629
tdb@mcwrealty.com

Peyton McWhirter
678.385.2705
pmm@mcwrealty.com

McWhirter Realty Partners, LLC
300 Galleria Parkway, Suite 300
Atlanta, GA 30339
770.955.2000
www.mcwrealty.com



McWhirter
Commercial Real Estate Since 1981

No warranty or representation, express or implied, is made as to the accuracy of the information contained herein, and same is subject to errors, omissions, change of price, rental or other conditions, withdrawal without notice, and to any special listing conditions, imposed by our principals.

Commercial Land For Sale

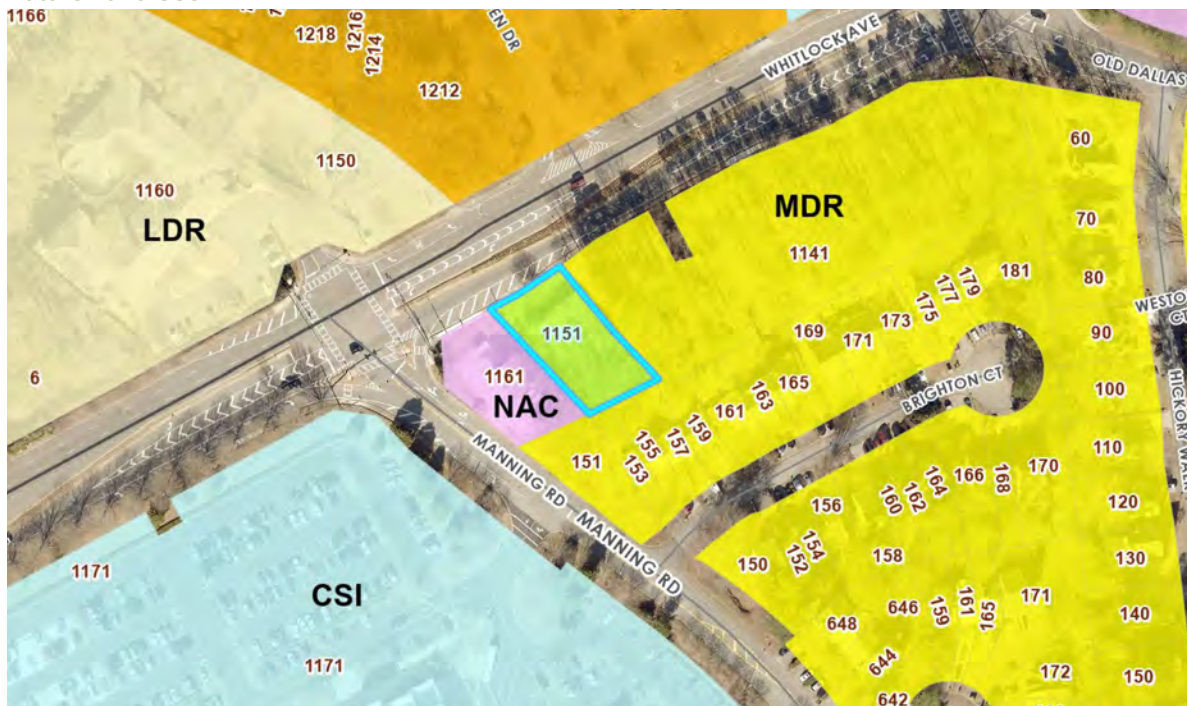
0.340± AC - Zoned NRC

1151 Whitlock Avenue, Marietta, GA 30064

Zoning



Future Land Use



Dan Buyers
770.596.2629
tdb@mcwrealty.com

Peyton McWhirter
678.385.2705
pmm@mcwrealty.com

McWhirter Realty Partners, LLC
300 Galleria Parkway, Suite 300
Atlanta, GA 30339
770.955.2000
www.mcwrealty.com



McWhirter
Commercial Real Estate Since 1981

No warranty or representation, express or implied, is made as to the accuracy of the information contained herein, and same is subject to errors, omissions, change of price, rental or other conditions, withdrawal without notice, and to any special listing conditions, imposed by our principals.