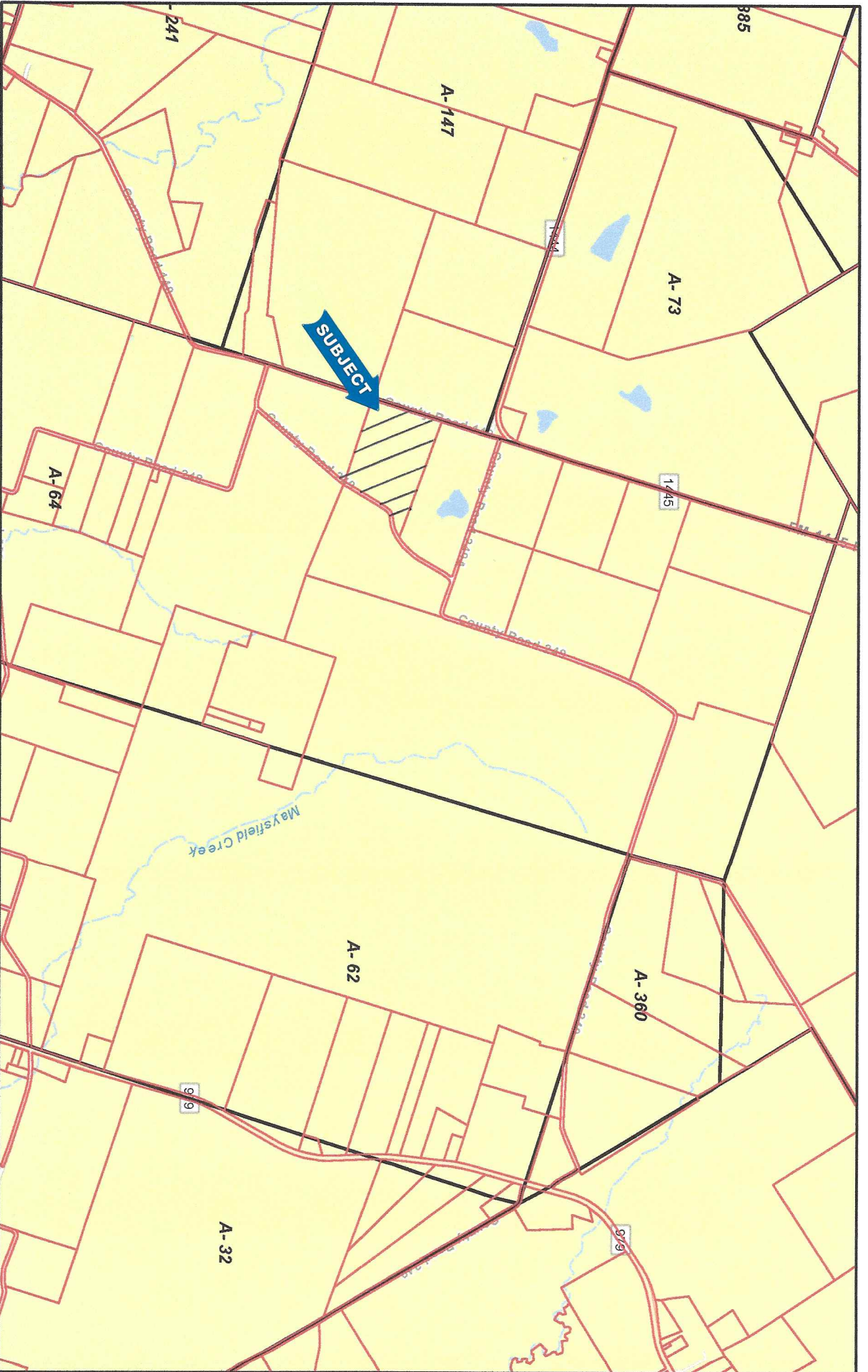


# Milam CAD Web Map

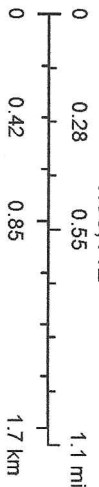


11/29/2022, 11:50:07 AM

Abstracts

Parcels

1:36,112



Disclaimer: This product is for informational purposes only and has not been prepared for or be suitable for legal, engineering, or surveying purposes. It does not represent an on-the-ground survey and represents only the approximate relative location of boundaries.

Milam County Appraisal District, BIS Consulting - [www.bisconsulting.com](http://www.bisconsulting.com)  
Baylor University, Texas Parks & Wildlife, CONANP, Esri, HERE, Garmin, SafeGraph, GeoTechnologies, Inc, METIN/ASA, USGS, EPA, NPS, US