

**FOR SUBLEASE**

# 4.6-Acre Trailer Yard

401 Telfair Road, Savannah, GA 31415

**RATE: \$5,500 PER ACRE/MONTH (NNN)**

MORE INFORMATION:

**STEPHEN EZELLE, SIOR**

Partner

+1 912 441 3083

[sezelle@gilbertezelle.com](mailto:sezelle@gilbertezelle.com)

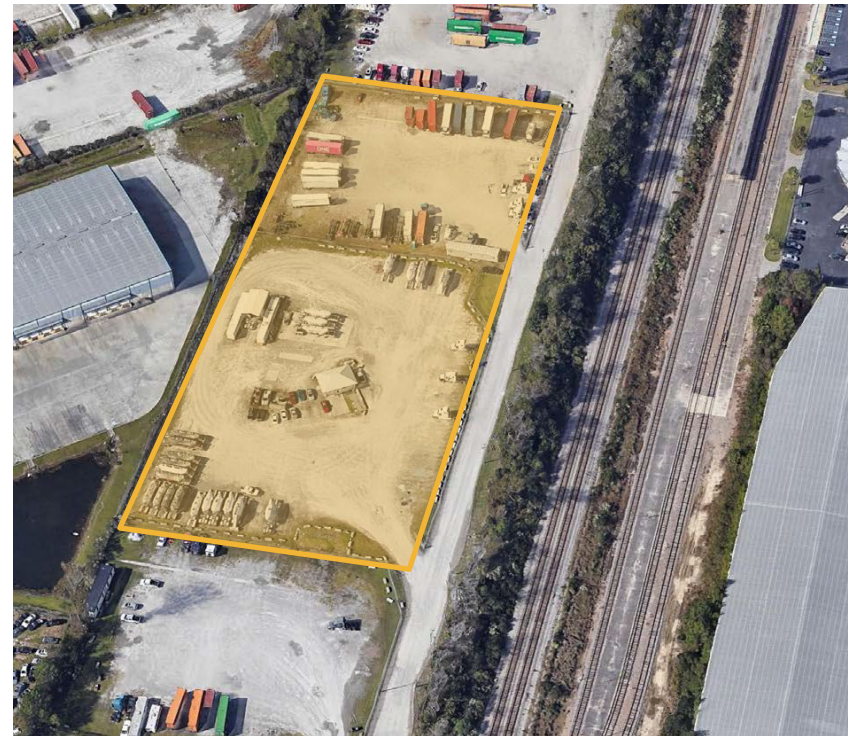
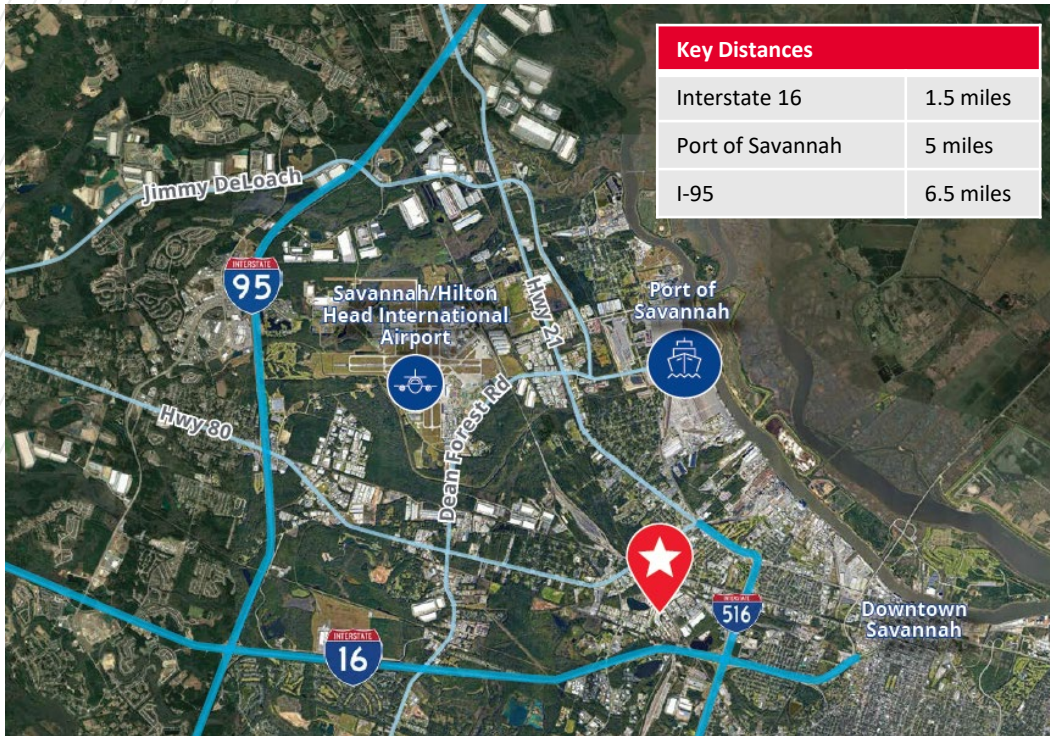
TELFAIR ROAD



**CUSHMAN &  
WAKEFIELD**

**GILBERT &  
EZELLE**

# 401 Telfair Rd • 4.6-Acre Trailer Yard



- ±4.6-acre industrial yard for sublease
- ±1,000 SF office building
- Fenced with utilities available
- Yard in excellent condition with maintained gravel and concrete dolly pads
- Located within 5 miles from the Garden City Terminal
- **AVAILABLE 11/1/2024**

FOR INFORMATION:

**STEPHEN EZELLE, SIOR, CCIM**

Partner

+1 912 441 3083

[sezelle@gilbertezelle.com](mailto:sezelle@gilbertezelle.com)

[www.gilbertezelle.com](http://www.gilbertezelle.com)



TELFAIR ROAD