



SterlingCRE
ADVISORS

Versatile Infill Industrial Suite For Lease

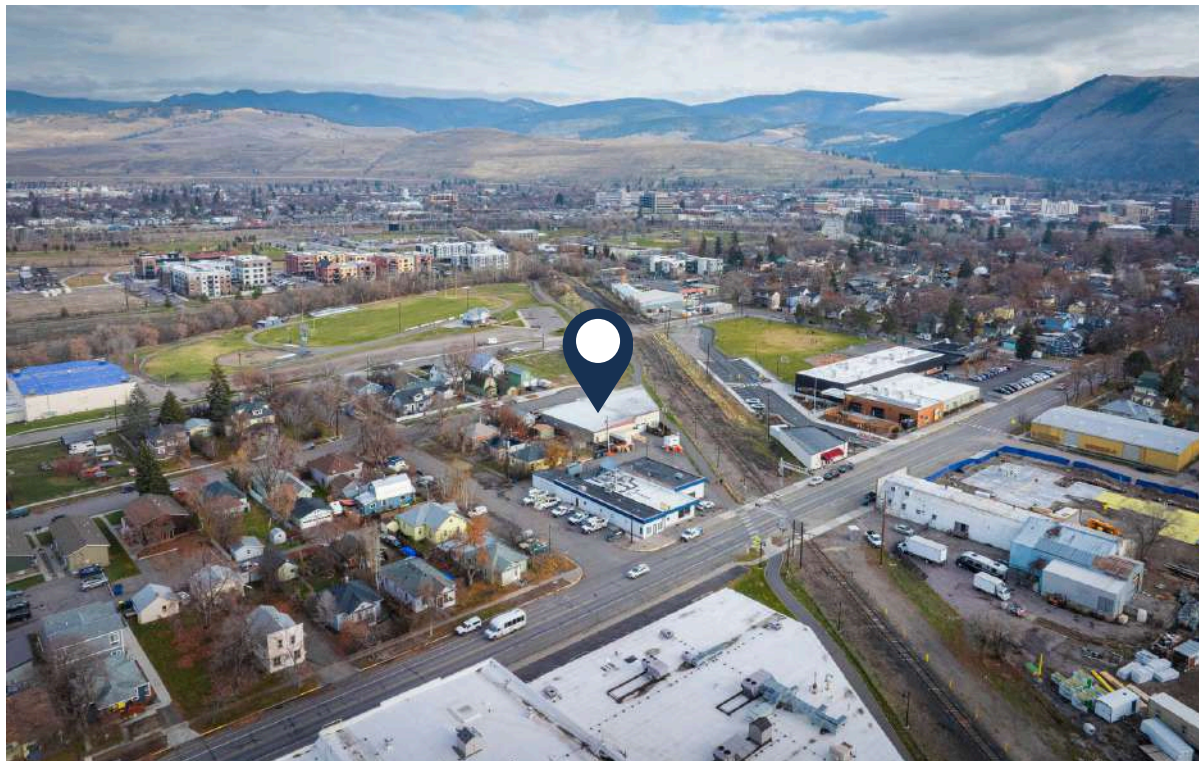
901 S 2nd Street W, Unit A
Missoula, Montana
±4,000 SF | Industrial Condo

Exclusively listed by:
Claire Matten, CCIM | SIOR
Claire@SterlingCREadvisors.com
406.360.3102

Opportunity Overview

Located in a prime in-town industrial corridor, 901 S 2nd Street, Unit A presents a rare opportunity for businesses needing functional space near Missoula's urban core. This $\pm 4,000$ SF industrial suite offers immediate access to Downtown, Midtown, and the University area — ideal for contractors, service providers, or light industrial users.

The space features a large open warehouse with a 10' grade-level roll-up door, two private offices, and a dedicated restroom. With clean finishes, a flexible layout, and both on-site and street parking available, this property supports efficient day-to-day operations in a high-demand, central location.



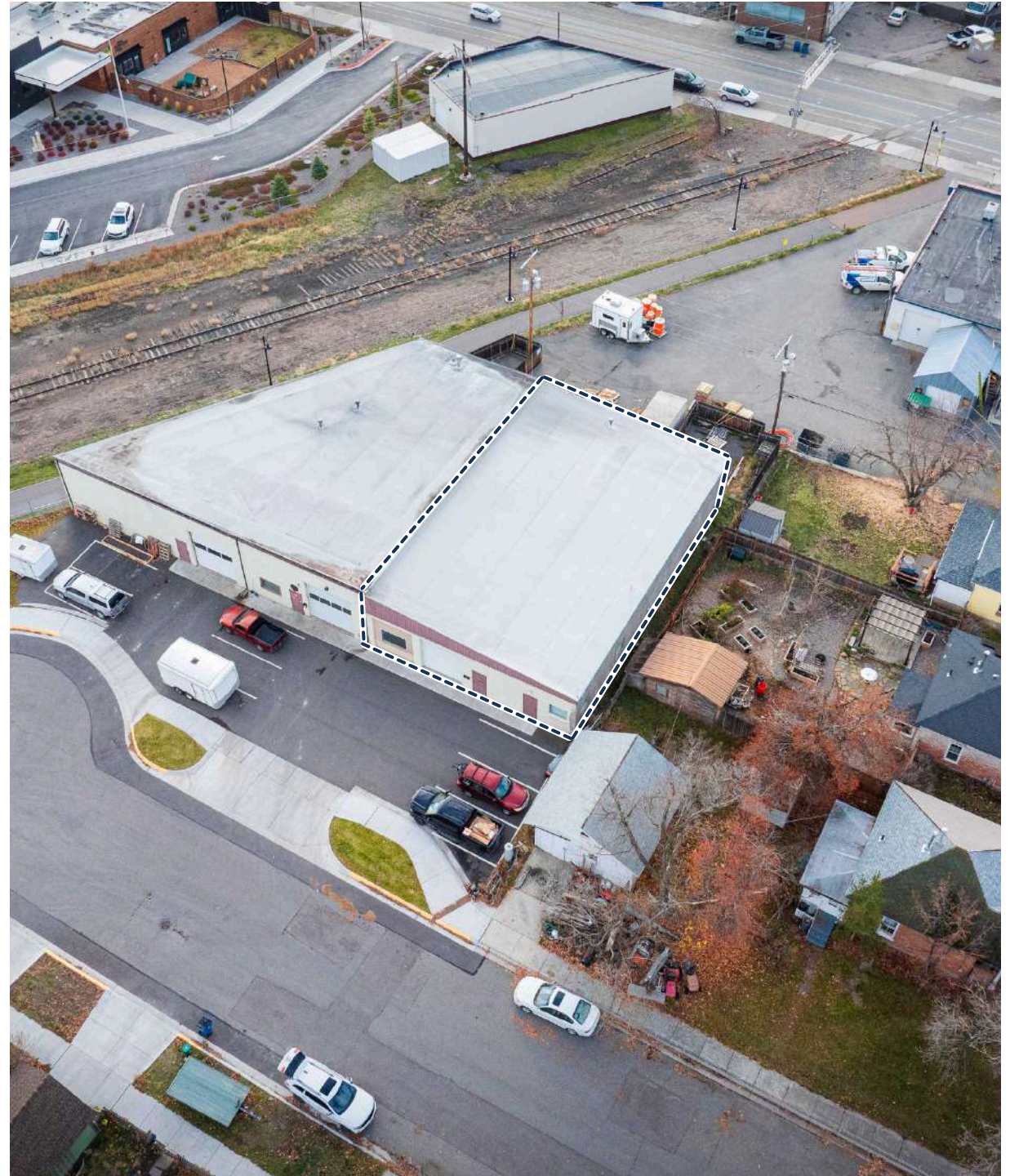
Address	901 S 2 nd Street W, Suite A Missoula, MT 59801
Property Type	Industrial
Lease Rate	\$12.00/SF, NNN
Estimated NNN	\$2.86/SF for taxes, insurance, management and reserves; tenant to contract with individually metered utilities
Total Square Feet	$\pm 4,000$ Square Feet
Total Acreage	± 0.342 Acres

Interactive Links

 [Link to Listing](#)

 [Street View](#)

 [3D Tour](#)



Interactive Links

Property Details

Address	901 S 2 nd Street W, Suite A Missoula, MT 59801
Property Type	Industrial
Total Acreage	±0.342 Acres
Services	City Water & Sewer
Access	South 2 nd Street West
Zoning	U-MU1
Geocode	04-2200-21-3-34-02-0000
Loading	One (1) Grade Level Loading Door
Power	3-phase nearby
Year Built	1974
Parking	3 Spaces + On-Street
Amenities	Two (2) private offices, restroom





Infill location with high barriers to entry close to Downtown, Midtown, and the University of Montana.



Generous-sized production space that is move-in ready, well-maintained, and functional



Convenient grade-level loading with multiple exterior man doors providing flexible access



Dedicated on-site parking with additional street parking options nearby

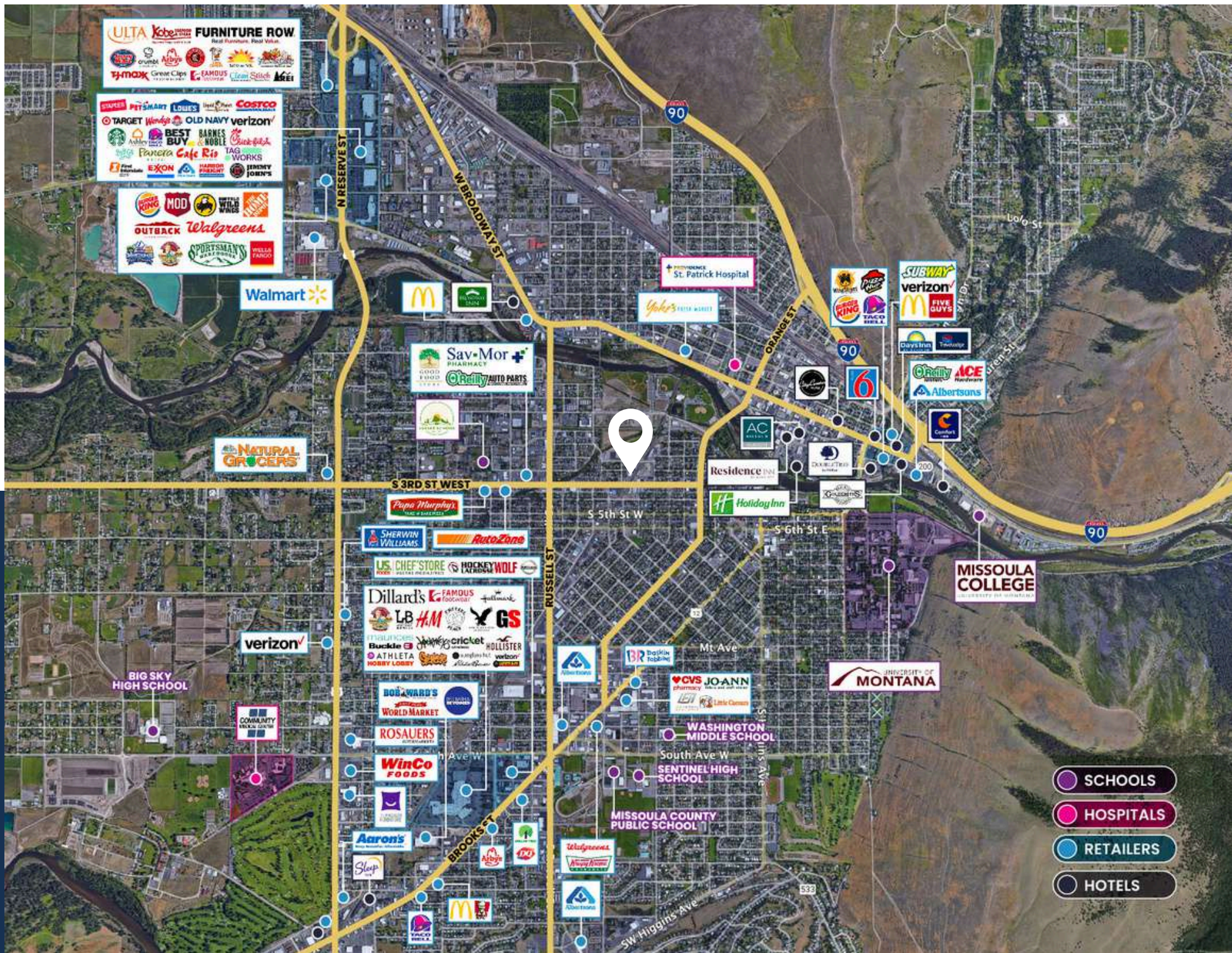


Two (2) finished office spaces suitable for meeting with customers or supporting office-based operations and private restroom

Centrally Located Office Space for Lease

Located in the heart of Missoula, Montana. Near downtown, the UM campus and Midtown





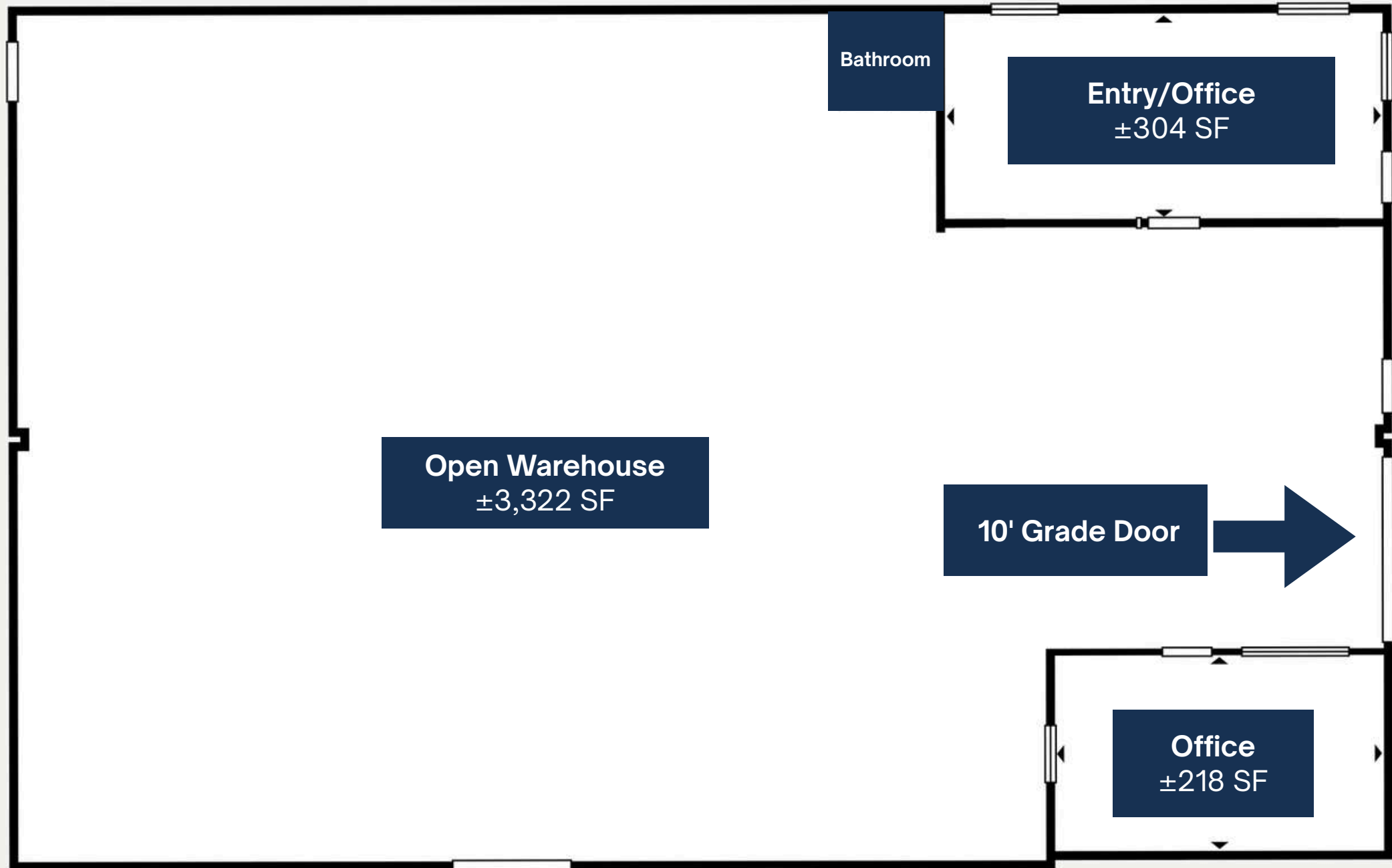
Retailer Map



Interior Photos






Exterior Photos





Legend

	1 mile radius demo info
	3 mile radius demo info
	5 mile radius demo info

Key Facts

KEY FACTS

1 mile

17,248

Population



Median Age



Average Household Size

\$55,732

Median Household Income

2,939

2023 Owner Occupied Housing Units (Esri)

6,221

2023 Renter Occupied Housing Units (Esri)

BUSINESS

1 mile



1,807

Total Businesses



19,227

Total Employees

HOUSING STATS

1 mile



\$456,171

Median Home Value



\$6,509

Average Spent on Mortgage & Basics



\$940

Median Contract Rent

2025 Households by income (Esri)

1 mile

The largest group: \$50,000 - \$74,999 (18.5%)

The smallest group: \$200,000+ (3.5%)

Indicator ▲	Value	Diff
<\$15,000	13.3%	+4.6%
\$15,000 - \$24,999	8.5%	+2.0%
\$25,000 - \$34,999	10.5%	+3.0%
\$35,000 - \$49,999	13.0%	+3.1%
\$50,000 - \$74,999	18.5%	+3.2%
\$75,000 - \$99,999	12.6%	-1.7%
\$100,000 - \$149,999	13.6%	-5.0%
\$150,000 - \$199,999	6.6%	-3.0%
\$200,000+	3.5%	-6.0%

Bars show deviation from Missoula County

Variables	1 mile	3 miles	5 miles	ZIP Codes 59801 (Missoula)	Counties Missoula County	States Montana United States	United States of America United States
2022 Total Population	17,248	63,270	89,807	32,831	123,770	1,144,799	339,887,819
2022 Household Population	16,764	60,626	86,748	30,978	120,643	1,115,471	331,671,159
2022 Family Population	8,589	36,359	57,364	18,238	85,153	851,883	264,093,561
2027 Total Population	17,582	64,906	93,420	33,146	128,306	1,205,657	347,149,422
2027 Household Population	17,098	62,262	90,361	31,293	125,179	1,176,329	338,932,762
2027 Family Population	8,707	37,058	59,540	18,318	88,019	895,113	269,093,856

Variables	1 mile	3 miles	5 miles
2022 Per Capita Income	\$39,198	\$41,346	\$44,214
2022 Median Household Income	\$55,732	\$63,636	\$73,128
2022 Average Household Income	\$75,219	\$88,734	\$98,819
2027 Per Capita Income	\$43,600	\$46,487	\$49,854
2027 Median Household Income	\$63,127	\$73,557	\$82,405
2027 Average Household Income	\$83,110	\$99,041	\$110,818

This infographic contains data provided by Esri, Esri-U.S. BLS, ACS, Esri-Data Axle. The vintage of the data is 2025, 2030, 2019-2023.

© 2025 Esri

Missoula Industrial Market Data | Q3 2025

LEASING ACTIVITY | INDUSTRIAL

	T12 Ending 9.30.2024	T12 Ending 9.30.2025	Change
County Average Lease Rate	\$10.58	\$11.91	12.57% ↑
NNN Average	\$3.24	\$2.98	-8.02% ↓
County Vacancy	4.06%	11.81%	7.75% ↑

SALES ACTIVITY | INDUSTRIAL

	T12 Ending 9.30.2024	T12 Ending 9.30.2025	Change
County Average Sale Price PSF	\$148.09	\$191.06	29.02% ↑
Condominium Average Sale Price PSF	\$191.51	\$191.96	0.23% ↑
Freestanding Average Sale Price SF	\$126.39	\$190.66	50.85% ↑

All data covers the trailing 12 months
Lease data is based on NNN or NNN Equivalent

INDUSTRIAL DEVELOPMENT PIPELINE

Construction	±139,782 SF
Permitting	±3,350 SF
Planning	±62,600 SF
Completed YTD 2025	±20,000 SF



Missoula Air Service

Missoula International Airport offers **direct flights** to major cities on the west coast and midwest.

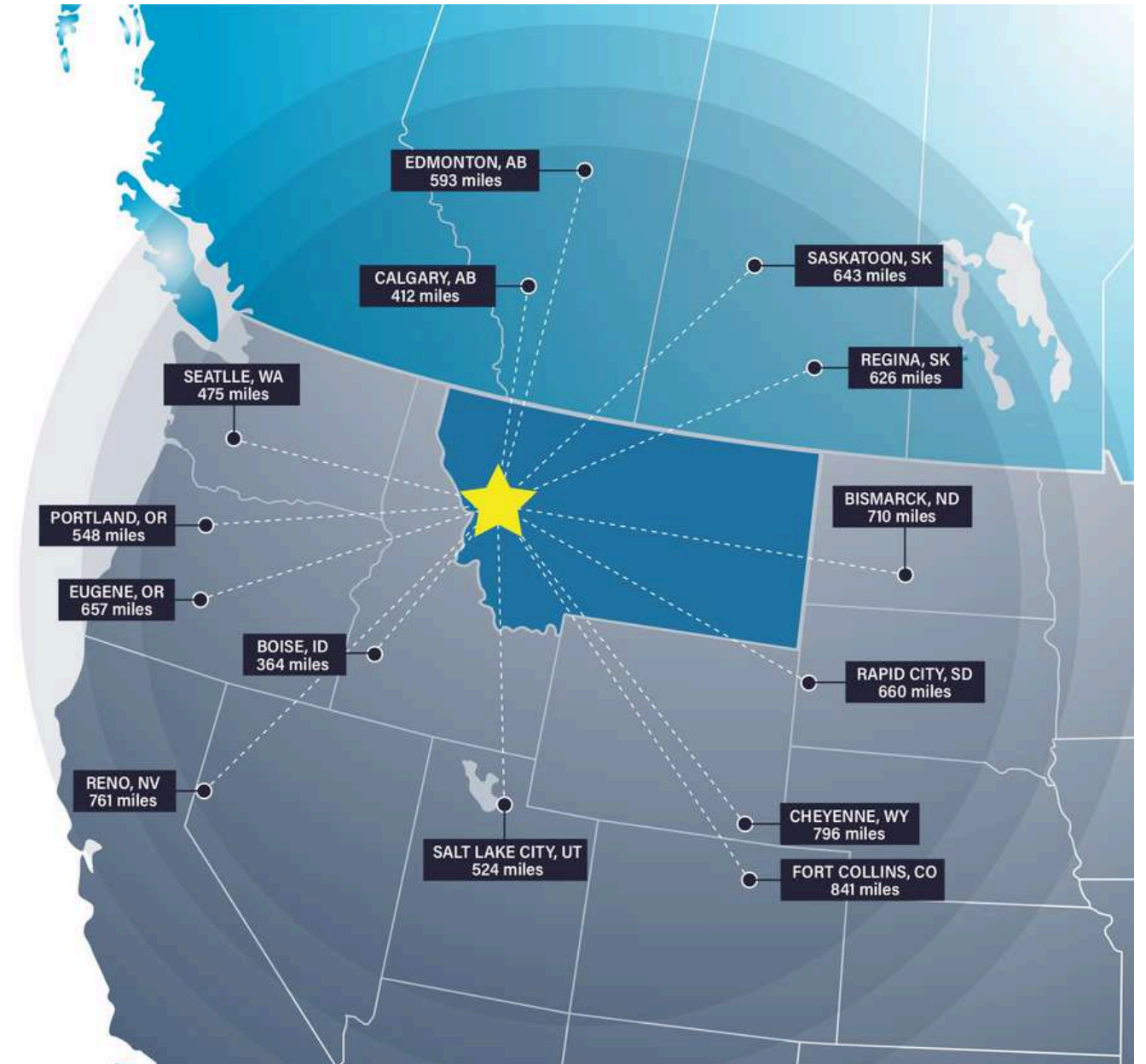


Missoula Access

Missoula offers strategic proximity to major cities in the Pacific Northwest, Midwest, and Canada.

Missoula is within a day's truck drive of cities across the Northwest, including major Canadian metros. Easy access to Interstate 90 and US Highway 93 means Montana's major cities including Billings, Bozeman, Butte, Helena, Great Falls, Kalispell and Missoula are within a half day's drive.

Access to rail and the Missoula International Airport round out the city's access to a multimodal transportation network.



Top Employers

University of Montana

3,000+ employees

Missoula County Public Schools

3,000+ employees

St. Patrick Hospital

1000+ employees

Montana Rail Link

1,000+r employees

Community Medical Center

1000+ employees

Missoula County

500+ employees

City of Missoula

500+ employees

Allegiance Benefits

500+ employees

Noteworthy

Submittable 



workiva



Pathlabs



Cognizant

PatientOne



Source: Montana Department of Labor & Industry | lmi.mt.gov & Zippia | zippia.com





Brokerage Team



CLAIRE MATTEN, CCIM | SIOR
Commercial Real Estate Advisor

Claire has a long record of successfully guiding local, national, and multi-national clients with their commercial real estate acquisitions, lease obligations, asset reposition and dispositions. Claire specializes in industrial investment, commercial office, and self-storage properties.



JOE TREDIK
Leasing Specialist

Joe brings a personal understanding of the local market, its trends, and its unique opportunities to the Sterling Team. He leverages his accounting background and leasing experience to provide clients with detailed financial analysis and strategic insights that enable clients to make well informed leasing decisions.



SIERRA PIERCE
Transaction Coordinator

Sierra has a sharp eye for detail with a background in client service and project coordination. With experience in marketing, small business ownership, and healthcare administration, Sierra has spent her career managing logistics, building strong relationships, and ensuring no task falls through the cracks.

Disclaimer

CONFIDENTIALITY & DISCLAIMER All materials and information received or derived from SterlingCRE Advisors its directors, officers, agents, advisors, affiliates, and/or any third party sources are provided without representation or warranty as to completeness, veracity, or accuracy, condition of the property, compliance or lack of compliance with applicable governmental requirements, developability or suitability, the financial performance of the property, the projected financial performance of the property for any party's intended use or any and all other matters. Neither SterlingCRE Advisors its directors, officers, agents, advisors, or affiliates makes any representation or warranty, express or implied, as to accuracy or completeness of any materials or information provided, derived, or received. Materials and information from any source, whether written or verbal, that may be furnished for review are not a substitute for a party's active conduct of its own due diligence to determine these and other matters of significance to such party. SterlingCRE Advisors will not investigate or verify any such matters or conduct due diligence for a party unless otherwise agreed in writing. EACH PARTY SHALL CONDUCT ITS OWN INDEPENDENT INVESTIGATION AND DUE DILIGENCE. Any party contemplating or under contract or in escrow for a transaction is urged to verify all information and to conduct their own inspections and investigations including through appropriate third-party independent professionals selected by such party. All financial data should be verified by the party including by obtaining and reading applicable documents and reports and consulting appropriate independent professionals. SterlingCRE Advisors makes no warranties and/or representations regarding the veracity, completeness, or relevance of any financial data or assumptions. SterlingCRE Advisors does not serve as a financial advisor to any party regarding any proposed transaction. All data and assumptions regarding financial performance, including that used for financial modeling purposes, may differ from actual data or performance. Any estimates of market rents and/or projected rents that may be provided to a party do not necessarily mean that rents can be established at or increased to that level. Parties must evaluate any applicable contractual and governmental limitations as well as market conditions, vacancy factors, and other issues in order to determine rents from or for the property. Legal questions should be discussed by the party with an attorney. Tax questions should be discussed by the party with a certified public accountant or tax attorney. Title questions should be discussed by the party with a title officer or attorney. Questions regarding the condition of the property and whether the property complies with applicable governmental requirements should be discussed by the party with appropriate engineers, architects, contractors, other consultants, and governmental agencies. All properties and services are marketed by SterlingCRE Advisors in compliance with all applicable fair housing and equal opportunity laws.