

# 3,495-64,511 SF

370 James Street | New Haven, CT

## Property Highlights

- + Total Building SF
  - 172,400 SF
- + Available Space
  - Second Floor 3,495 SF; 8,730 SF; 12,000 SF
  - Third Floor 3,880 SF; 6,454 SF; 12,078 SF
  - Fourth Floor 6,557 SF; 11,317 SF
- + Year Built
  - 1915/1987/2004
- + Parking
  - 530 surface space, free of charge
- + Fiber Optics
  - AT&T
- + Features
  - Ability for Lab/R&D
  - Heavy floor loads
  - High power
  - Loading dock
  - Freight elevator
- + Location
  - Less than 0.5 miles to I-91 and I-95 on/off ramps

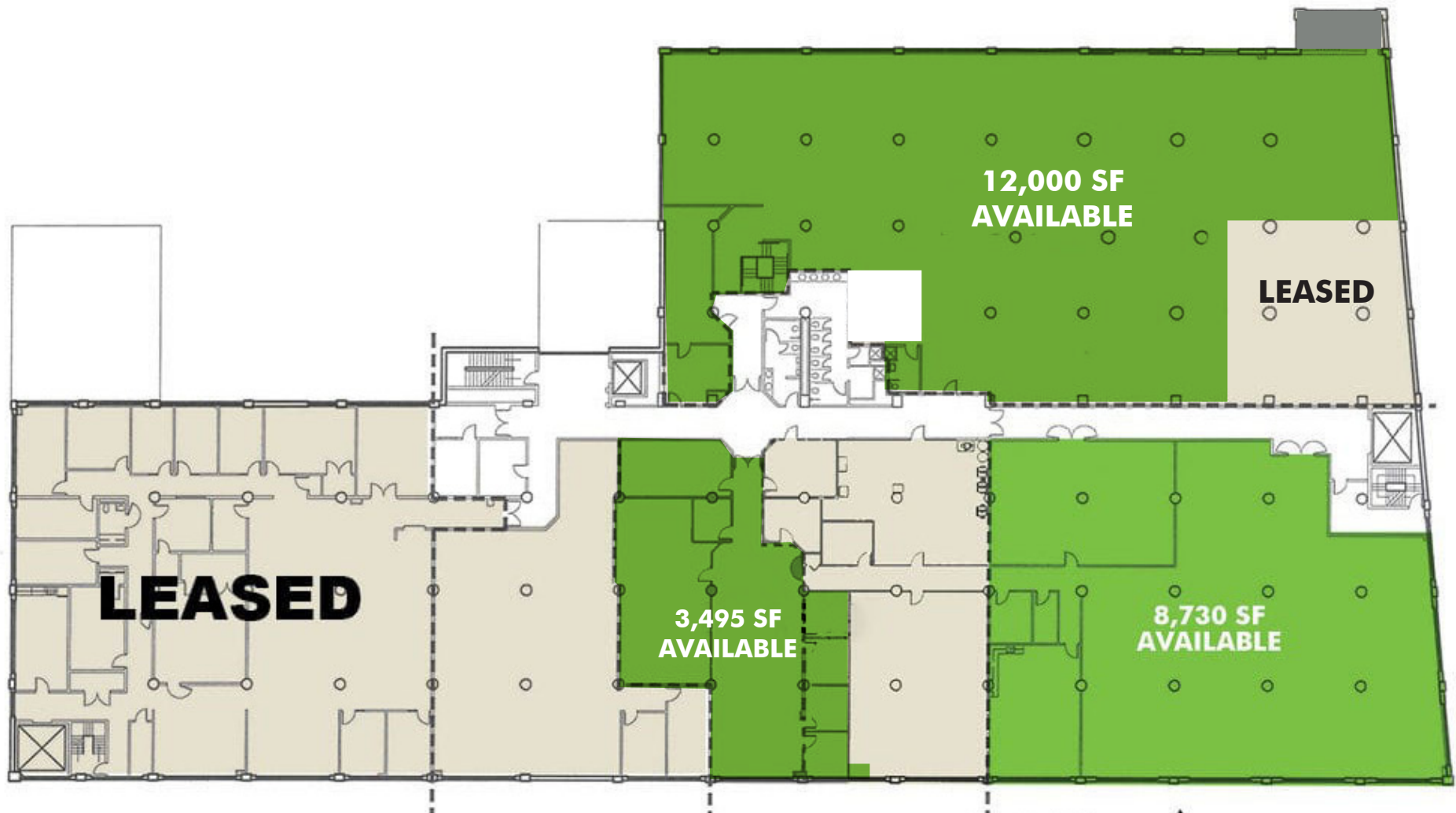
James @ 370



3,495-64,511 SF Available  
370 James Street | New Haven, CT 06513

For Lease

Second Floor - 3,495 SF, 8,730 SF & 12,000 SF



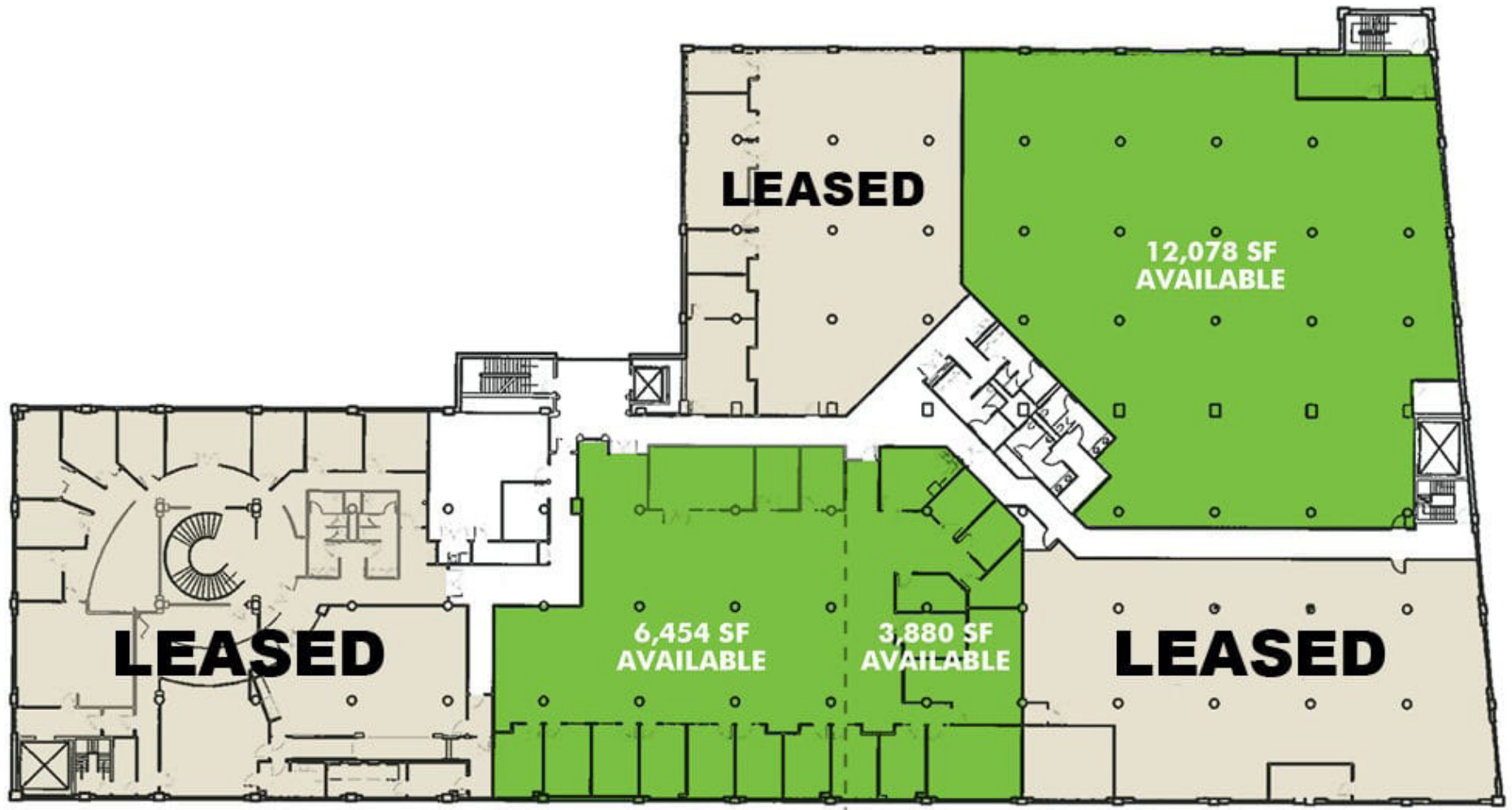
JAMES  
@370

ACORN  
G·R·O·U·P®

3,495-64,511 SF Available  
370 James Street | New Haven, CT 06513

For Lease

Third Floor - 3,880; 6,454 & 12,078 SF



JAMES  
@370

ACORN  
G·R·O·U·P®

3,495-64,511 SF Available  
370 James Street | New Haven, CT 06513

For Lease

Fourth Floor - 6,557 SF & 11,317 SF

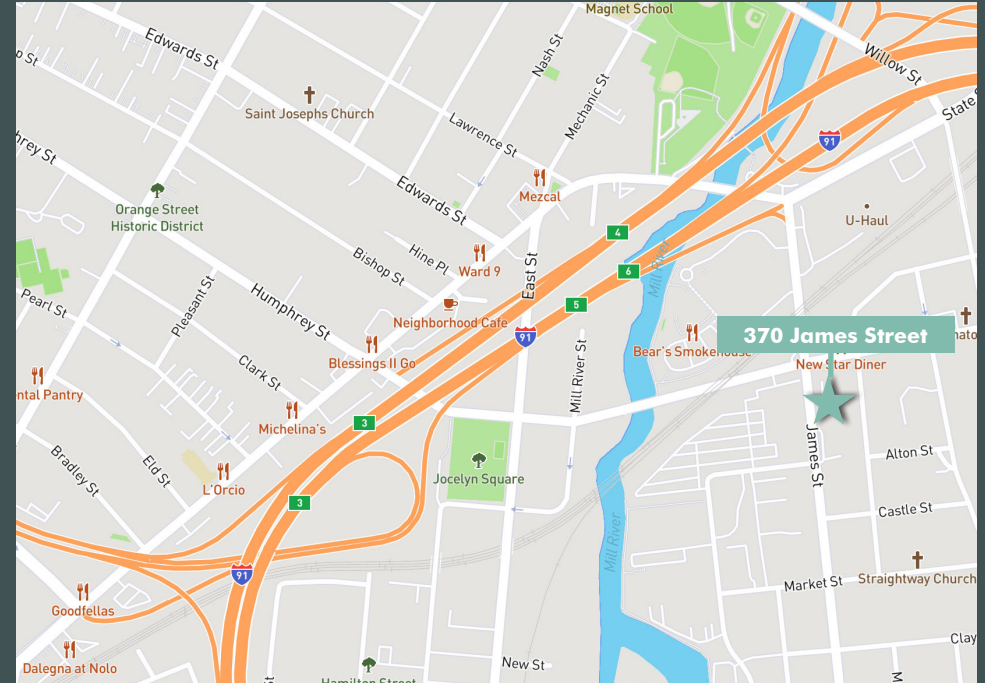




**3,495-64,511 SF Available**

370 James Street | New Haven, CT 06513

For Lease



## Contact Us

**David Hansen**

Vice President

+1 203 777 5996

david.hansen@cbre.com

© 2023 CBRE, Inc. All rights reserved. This information has been obtained from sources believed reliable but has not been verified for accuracy or completeness. CBRE, Inc. makes no guarantee, representation or warranty and accepts no responsibility or liability as to the accuracy, completeness, or reliability of the information contained herein. You should conduct a careful, independent investigation of the property and verify all information. Any reliance on this information is solely at your own risk. CBRE and the CBRE logo are service marks of CBRE, Inc. All other marks displayed on this document are the property of their respective owners, and the use of such marks does not imply any affiliation with or endorsement of CBRE. Photos herein are the property of their respective owners. Use of these images without the express written consent of the owner is prohibited.

[www.cbre.com](http://www.cbre.com)

**CBRE**