



**Industrial Investment
Property
\$1,750,000**

Melissa Riddick, SIOR
Direct 318.698.1110
Mobile 318.218.4987
MelissaR@Sealynet.com

Roland Ricou
Direct 318.698.1109
Mobile 318.773.3357
RolandR@Sealynet.com

Sealy Real Estate Services
333 Texas Street, Suite 1050
Shreveport, LA 71101
318.222.8700
www.sealynet.com

Sale Price

\$1,750,000

Property Information

Property Type

Industrial

Lot Size

3.93 Acres

Location Information

Building Name

Industrial Investment Property

Street Address

905 - 945 North Market Street

City, State, Zip

Shreveport, LA 71107

County

Caddo

Building Information

Building Size

34,025 SF



Sealy Real Estate Services
333 Texas Street, Suite 1050
Shreveport, LA 71101
318.222.8700
www.sealynet.com

Melissa Riddick, SIOR
Direct 318.698.1110
Mobile 318.218.4987
MelissaR@Sealynet.com

Roland Ricou
Direct 318.698.1109
Mobile 318.773.3357
RolandR@Sealynet.com

All information set forth in this brochure has been obtained from the owner, personal observation, or other reliable sources. Sealy Real Estate Services, LLC does not guarantee the accuracy of this information and makes no representations or warranties, expressed or implied, in this brochure. Information contained herein is subject to change without notice.

Property Overview

This industrial complex spans 3.93 acres and is strategically located along N. Market St. (LA Hwy 1), a heavily traveled corridor just north of downtown Shreveport. The site comprises multiple buildings and is currently leased to Scott Equipment Company, making it an income-generating investment. For detailed financials, including income and expense information, please contact the listing agent.

905 N MARKET – Two buildings totaling approximately 14,525 SF:

Front Building:

● 4,400± SF office space with open bullpen layout | ● 5,625± SF shop space with 20' sidewall height

Second Building:

● 4,500±SF enclosed space | ● 4,500±SF covered open area (not included in bldg. SF)

945 N MARKET – One building totaling approximately 19,500 SF:

Front Area:

● 3,900± SF office/parts space | ● 5,100± SF warehouse space

Back Shop Area:

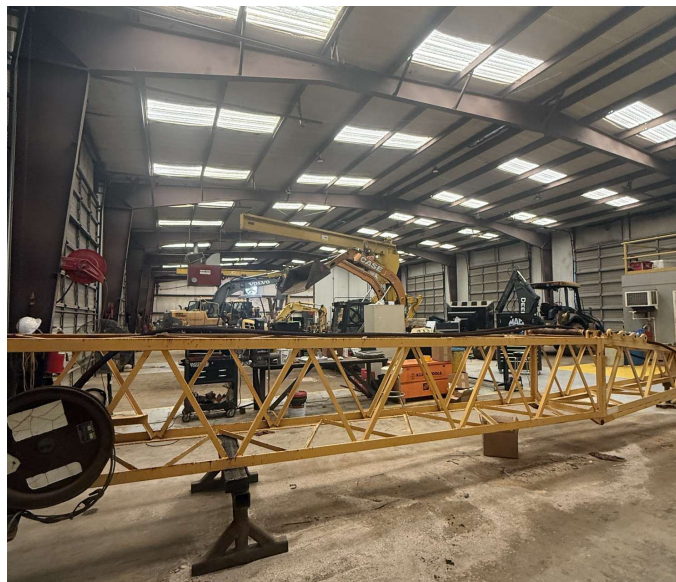
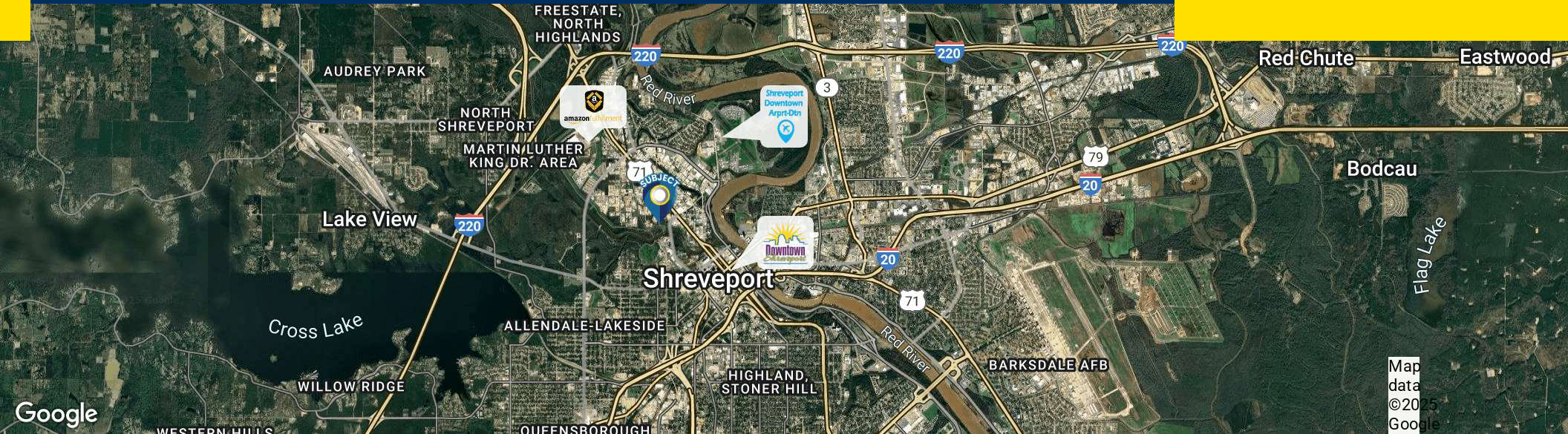
● 10,500± SF with 20' sidewall height (includes 11 doors, each measuring 18"x16')





905 - 945 North Market Street
Shreveport, LA 71107

Industrial
Property
For Sale



Sealy Real Estate Services
333 Texas Street, Suite 1050
Shreveport, LA 71101
318.222.8700
www.sealynet.com

Melissa Riddick, SIOR
Direct 318.698.1110
Mobile 318.218.4987
MelissaR@Sealynet.com

Roland Ricou
Direct 318.698.1109
Mobile 318.773.3357
RolandR@Sealynet.com

All information set forth in this brochure has been obtained from the owner, personal observation, or other reliable sources. Sealy Real Estate Services, LLC does not guarantee the accuracy of this information and makes no representations or warranties, expressed or implied, in this brochure. Information contained herein is subject to change without notice.