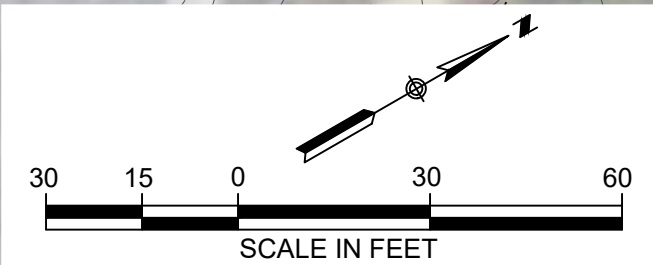
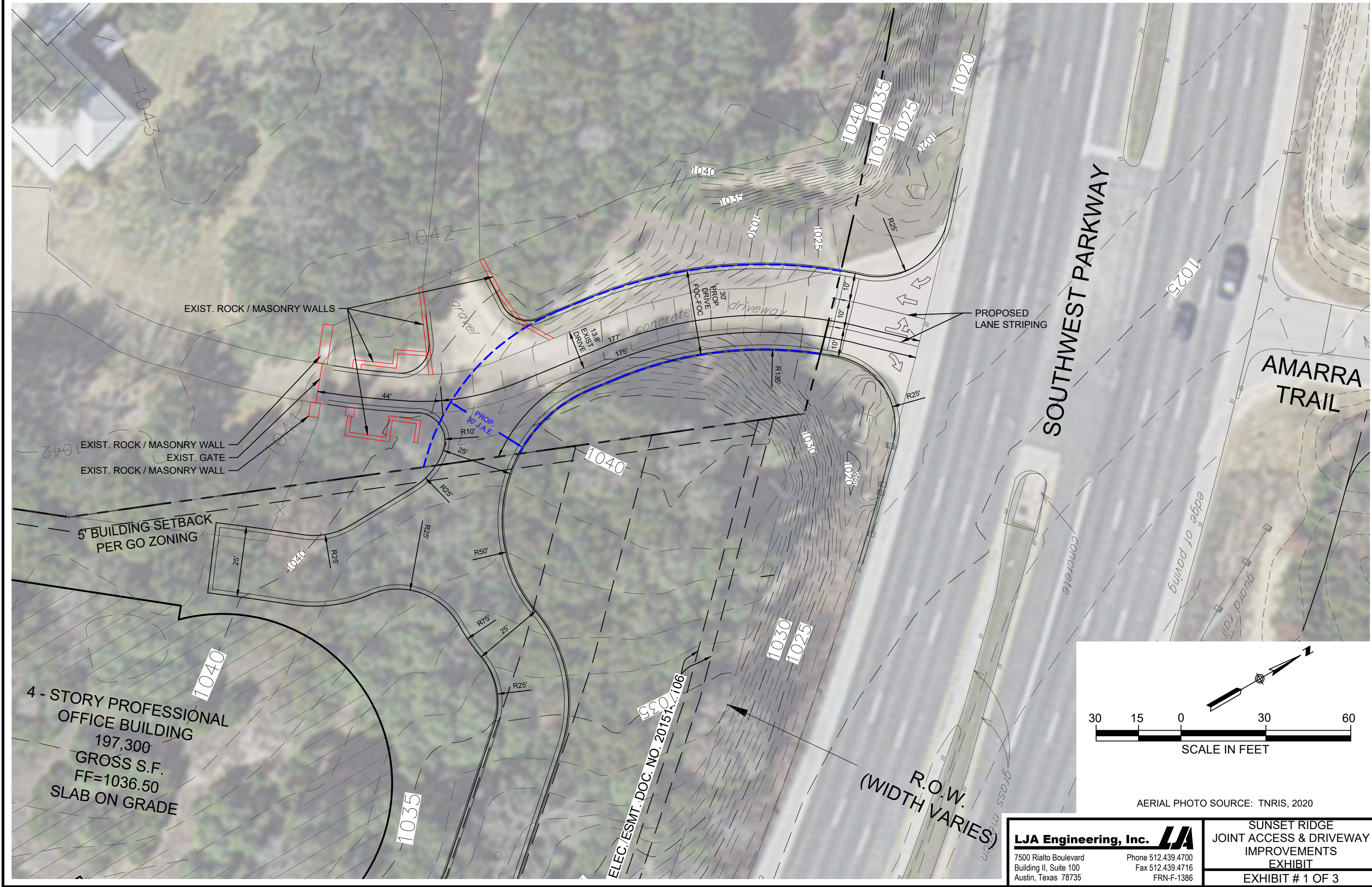


I:\A140 Riverside Res\19 Sunset Ridge\Exhibits\A140-19-JOINT ACCESS.dwg Apr 04, 2022 - 1:43pm



AERIAL PHOTO SOURCE: TNRS, 2020

4 - STORY PROFESSIONAL OFFICE BUILDING
197,300 GROSS S.F.
FF=1036.50
SLAB ON GRADE

5' BUILDING SETBACK PER GO ZONING

LJA Engineering, Inc.
7500 Rialto Boulevard
Building II, Suite 100
Austin, Texas 78735
Phone 512.439.4700
Fax 512.439.4716
FRN-F-1386

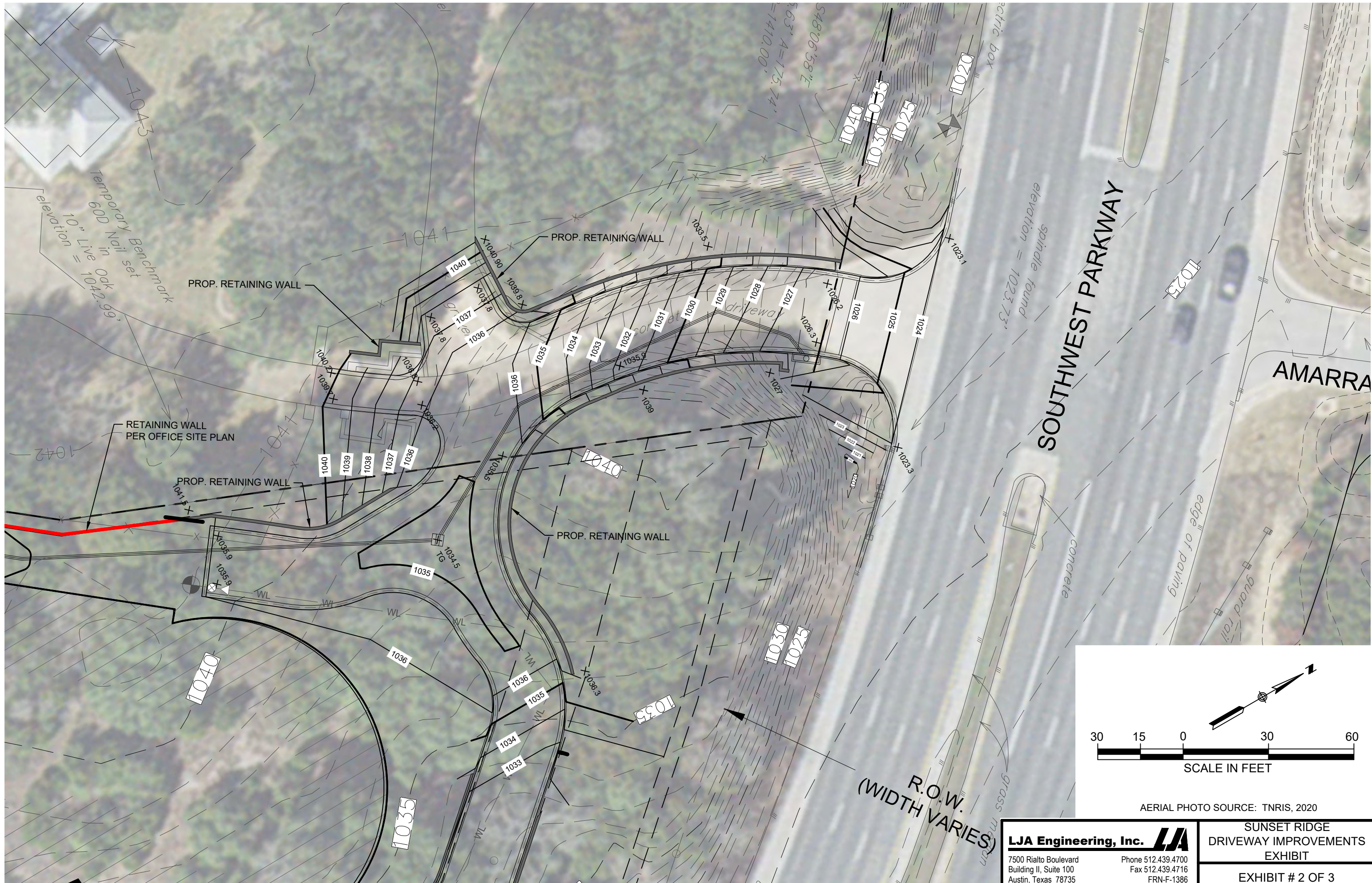
**SUNSET RIDGE
JOINT ACCESS & DRIVEWAY
IMPROVEMENTS
EXHIBIT
EXHIBIT # 1 OF 3**

ELEC./ESMT. DOC. NO. 201514.106

R.O.W. (WIDTH VARIES)

SOUTHWEST PARKWAY

AMARRA TRAIL



I:\A140 Riverside Res\19 Sunset Ridge\Exhibits\A140-19-DRIVEWAY.dwg Mar 23, 2022 - 10:44am

LJA Engineering, Inc.
 7500 Rialto Boulevard
 Building II, Suite 100
 Austin, Texas 78735
 Phone 512.439.4700
 Fax 512.439.4716
 FRN-F-1386

**SUNSET RIDGE
 DRIVEWAY IMPROVEMENTS
 EXHIBIT**
EXHIBIT # 2 OF 3

18" STORM LINE APPROVED PER SUNSET RIDGE OFFICE SITE PLAN. REVISING SLOPE TO 0.61%.

PROPOSED 18" STORM LINE TO ACCOMMODATE DRIVEWAY IMPROVEMENTS. SLOPE = 0.61%.

18" STORM PIPE PER OFFICE SITE PLAN

TIE IN PROP. 18" STORM LINE TO GRATE INLET SHOWN IN APPROVED SUNSET RIDGE OFFICE SITE PLANS.

**PROP. CURB INLET
18" FL = 1023.5**

ADD 326.94 LF OF PROP. 18" STORM PIPE SLOPE = 0.61%

PROP. GRATE INLET

REVISE PROPOSED 18" TIE IN TO FL = 1017.83 AT 30" X 18" WYE.

**1 30" X 18" WYE
30" FL IN = 1017.83
18" FL IN = 1019.36
30" FL OUT = 1017.83**

REVISE 601.58 LF OF 18" STORM LINE TO 0.61% ON APPROVED OFFICE SITE PLAN.

30" STORM SWR. PIPE



AERIAL PHOTO SOURCE: TNRS, 2020

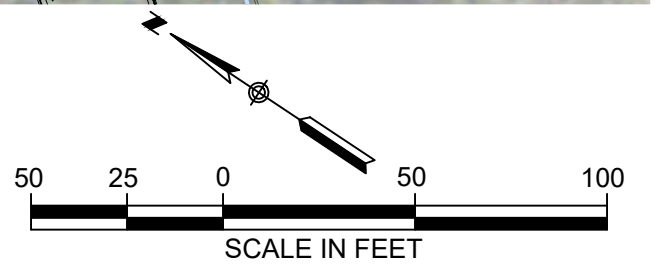
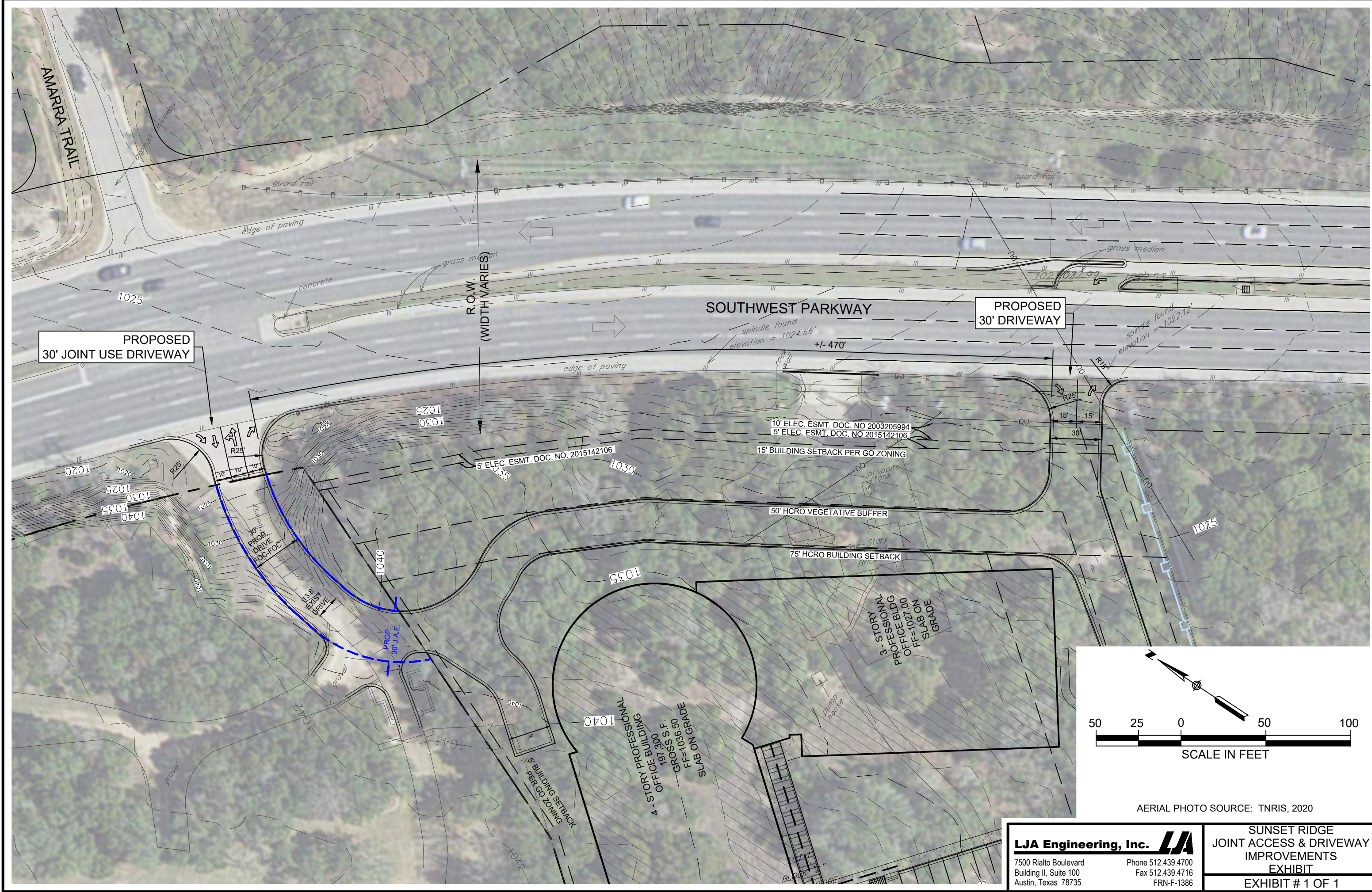
LJA Engineering, Inc.
7500 Rialto Boulevard
Building II, Suite 100
Austin, Texas 78735
Phone 512.439.4700
Fax 512.439.4716
FRN-F-1386

**SUNSET RIDGE
STORM PIPE IMPROVEMENTS
EXHIBIT**


EXHIBIT # 3 OF 3

I:\A140 Riverside Res\19 Sunset Ridge\Exhibits\A140-19-STORM PIPE.dwg Mar 23, 2022 - 10:45am

1:\A140 Riverside Res\19 Sunset Ridge\Exhibits\A140-19-two driveways.dwg Apr 04, 2022 - 1:42pm



AERIAL PHOTO SOURCE: TNRIS, 2020

LJA Engineering, Inc. 
 7500 Rialto Boulevard
 Building II, Suite 100
 Austin, Texas 78735
 Phone 512.439.4700
 Fax 512.439.4716
 FRN-F-1386

**SUNSET RIDGE
 JOINT ACCESS & DRIVEWAY
 IMPROVEMENTS
 EXHIBIT
 # 1 OF 1**