

5707-5709 GARDENDALE DR

HOUSTON, TX 77092



GARDENDALE BUSINESS PARK

6,000 SF AVAILABLE



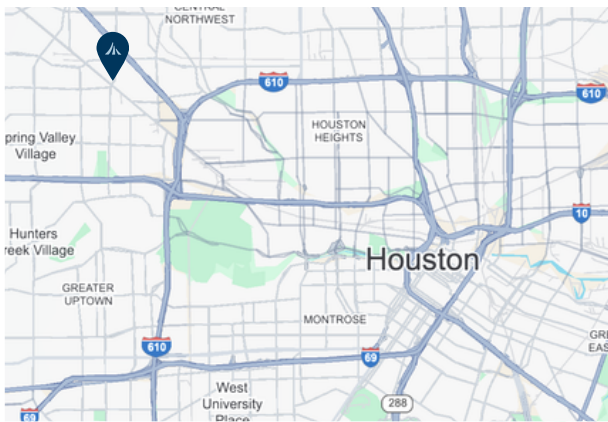
Meyer Carrington

MANAGEMENT • LEASING • DEVELOPMENT

GARDENDALE BUSINESS PARK



Gardendale Business Park is a fully renovated multi-tenant office warehouse park offering flexible configurations ranging from 2,000 to 6,000 square feet. Conveniently located with direct access to Highway 290 and Hempstead Highway, close proximity to I-45, Loop 610, and Beltway 8, the park provides excellent connectivity for businesses that rely on efficient transportation and distribution routes.



ANNIE TARWATER

713.668.2369

atarwater@mcmmanagement.com

DAN MEYER

713.668.2369

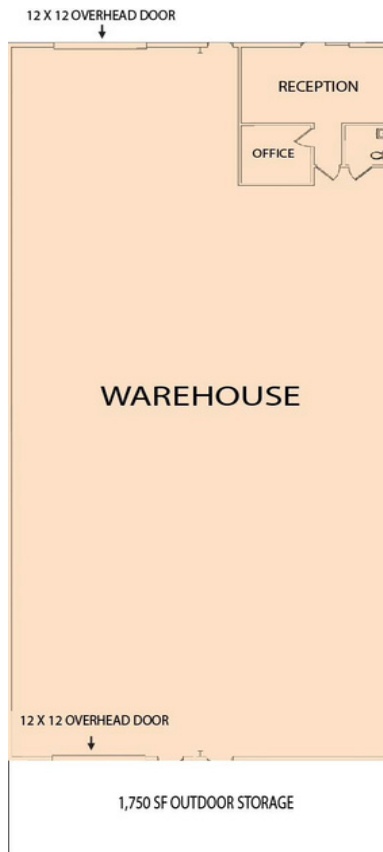
danmeyer@mcmmanagement.com

GARDENDALE BUSINESS PARK

SUITE 5707D



- 6,000 SF WITH +/-1,750 OF GATED, CONCRETE OUTDOOR STORAGE
 - 439 SF OFFICE
 - 5,561 SF WAREHOUSE
- RECENTLY RENOVATED
- LED WAREHOUSE LIGHTING
- 2 GRADE LEVEL BAY DOORS, FRONT AND REAR LOAD
- POWER: 3 PHASE
- CONVENIENTLY LOCATED WITH DIRECT ACCESS TO HIGHWAY 290 AND HEMPSTEAD HIGHWAY, CLOSE TO 610 LOOP, I-45 & BELTWAY 8



ANNIE TARWATER

713.668.2369

atarwater@mcmmanagement.com

DAN MEYER

713.668.2369

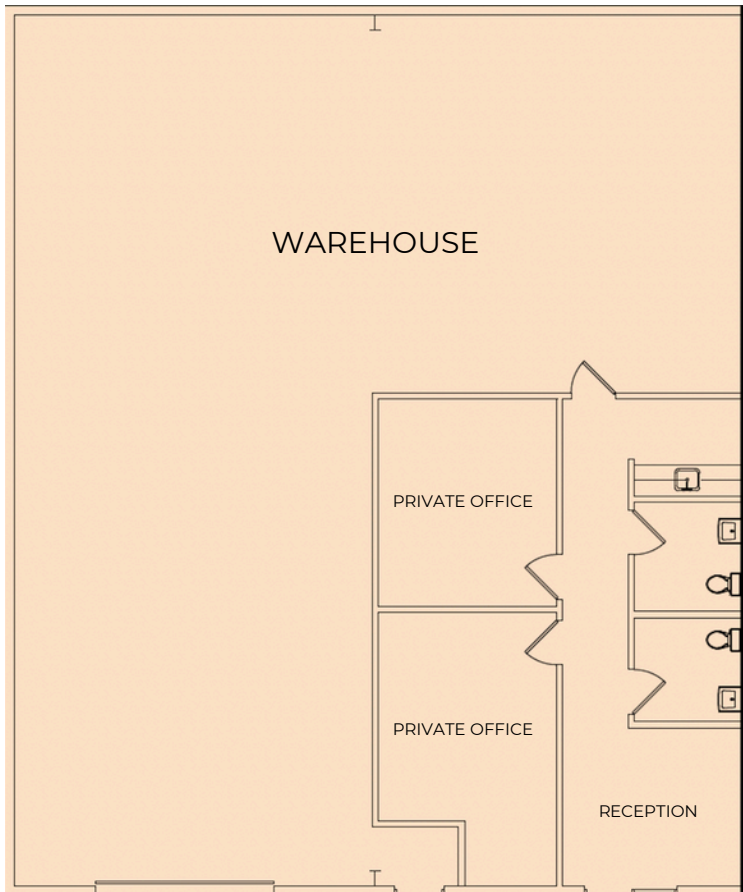
danmeyer@mcmmanagement.com

GARDENDALE BUSINESS PARK

SUITE 5709D



- 3,000 SF OF OFFICE/WAREHOUSE SPACE
- TWO PRIVATE OFFICES AND PRIVATE RESTROOMS
- GRADE LEVEL BAY DOORS, FRONT AND REAR LOAD
- POWER: 3 PHASE
- CONVENIENTLY LOCATED WITH DIRECT ACCESS TO HIGHWAY 290 AND HEMPSTEAD HIGHWAY, CLOSE TO 610 LOOP, I-45 & BELTWAY 8



ANNIE TARWATER

713.668.2369

atarwater@mcmmanagement.com

DAN MEYER

713.668.2369

danmeyer@mcmmanagement.com

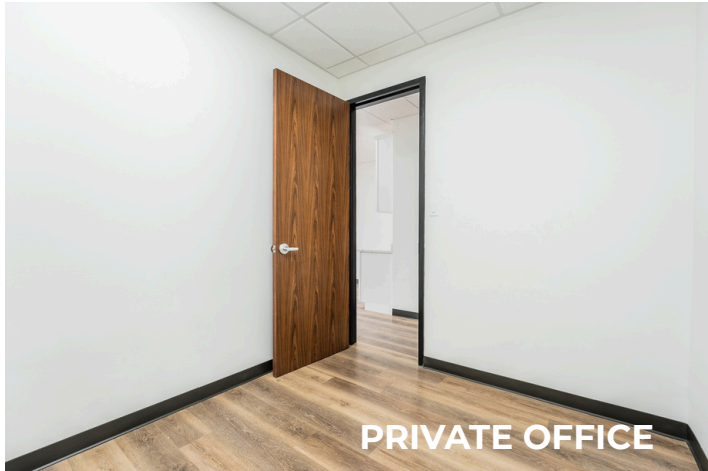
5707-5709 GARDENDALE DR



RECEPTION



RECEPTION



PRIVATE OFFICE



FRONT



WAREHOUSE



ROLL UP DOORS



BACK DOOR/ROLL UP DOOR



ADDITIONAL OUTDOOR STORAGE