



PRIME RETAIL  
SPACE  
FOR SALE OR  
LEASE

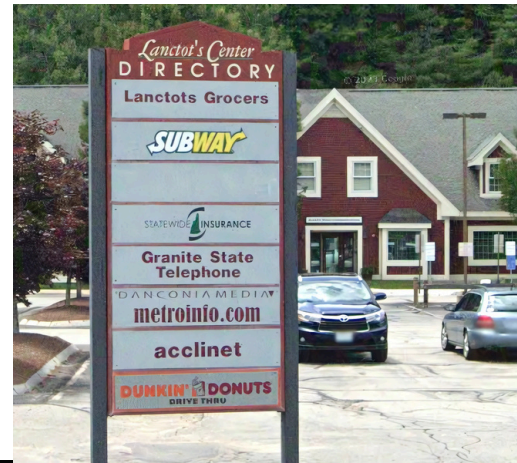
FOR SALE OR LEASE

**425 SOUTH STARK HIGHWAY  
WEARE, NH 03281**

**Multiple Suites Available For Lease: \$12 PSF/NNN**

**Entire Building For Sale: \$2,250,000**

# PROPERTY INFORMATION



Prime Retail Space For Lease  
425 SOUTH STARK HIGHWAY, WEARE, NH 03281  
Multiple Suites For Lease : \$12 PSF / NNN  
For Sale: \$2,250,000

## DESCRIPTION:

Join one of Weare's most successful retail plazas located on Rt. 114. This multi tenant two story office condo's for Retail or Office use. Located at Lanctot Center along with Dunkin Donuts, Gas Station, Convenience Store, Subway and several tenants in building. A must see!

## PROPERTY FEATURES:

- Mix of Retail Office & Space
- Great visibility on busy South Stark Highway
- Anchor tenants: Dunkin Donuts, Subway
- Paved Ample Parking

# DEMOGRAPHICS



## 2024 SUMMARY

2024 SUMMARY	2 MILE	5 MILE	10 MILE
Population	2,953	14,085	61,827
Households	1,055	5,186	22,408
Families	810	3,943	16,590
Avg HH Size	2.80	2.71	2.65
Median Age	40.9	41.8	41.7
Median HH Income	\$114,261	\$123,339	\$124,190
Avg HH Income	\$142,789	\$159,531	\$164,649

### BUSINESSES (10 MILE)



**1,486**

TOTAL BUSINESSES



**12,173**

TOTAL EMPLOYEES

### INCOME (10 MILE)



**\$124,190**

MEDIAN HH  
INCOME



**\$60,336**

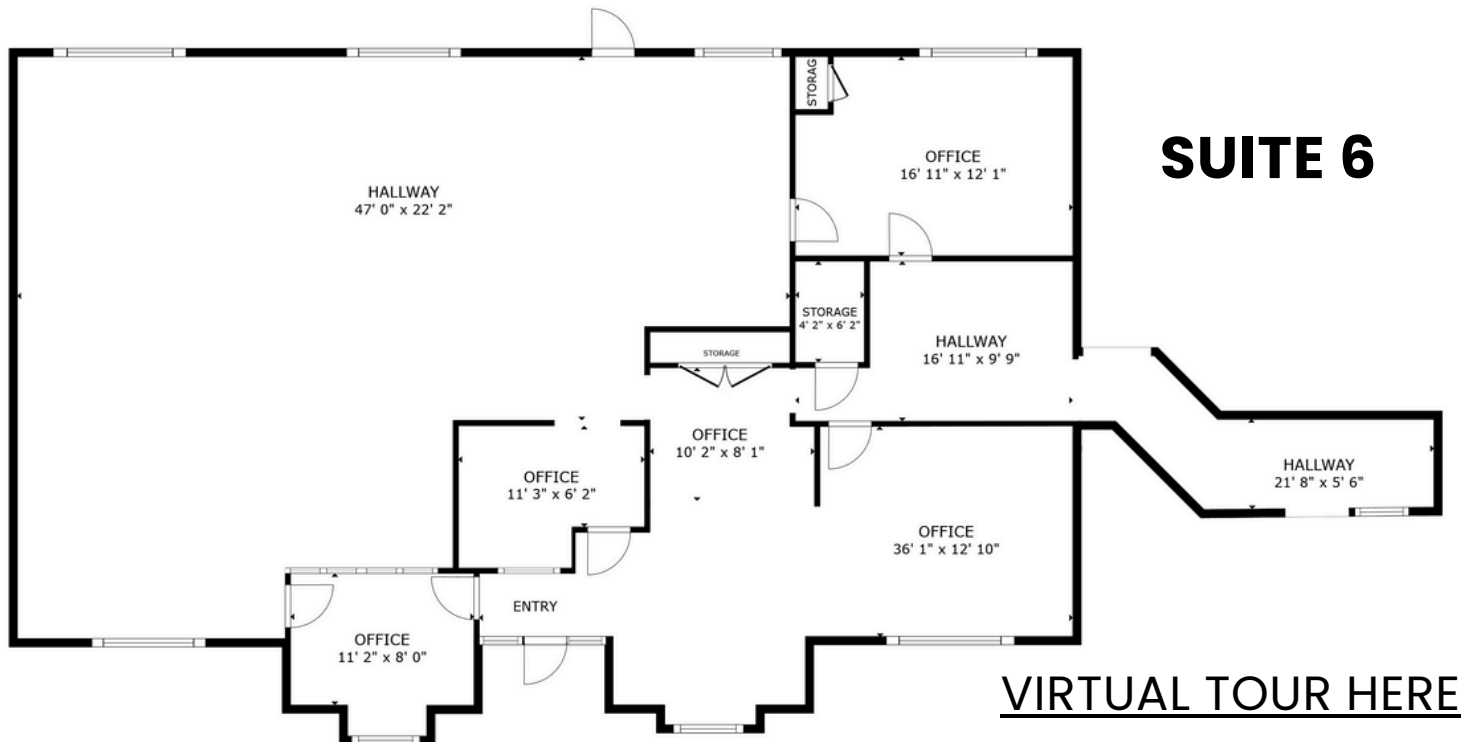
PER CAPITA  
INCOME



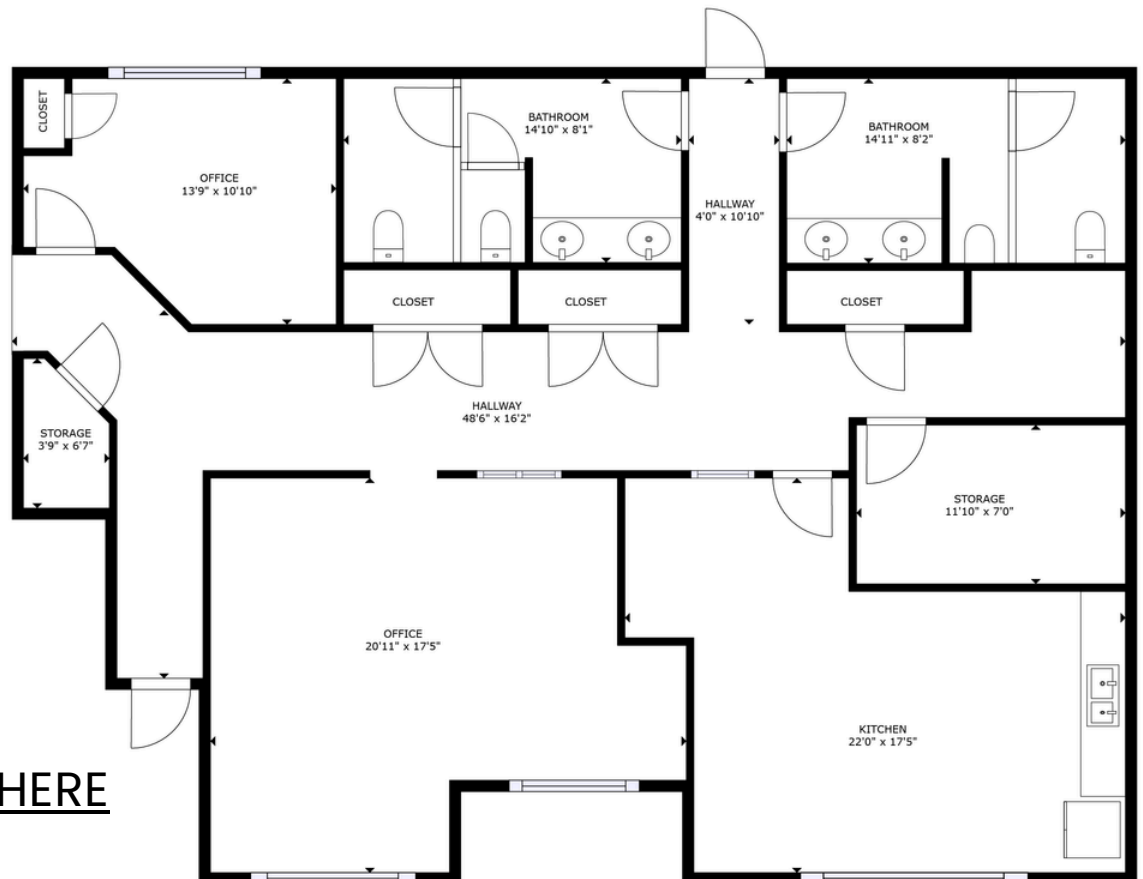
**\$670,447**

MEDIAN NET  
WORTH

# FLOOR PLAN

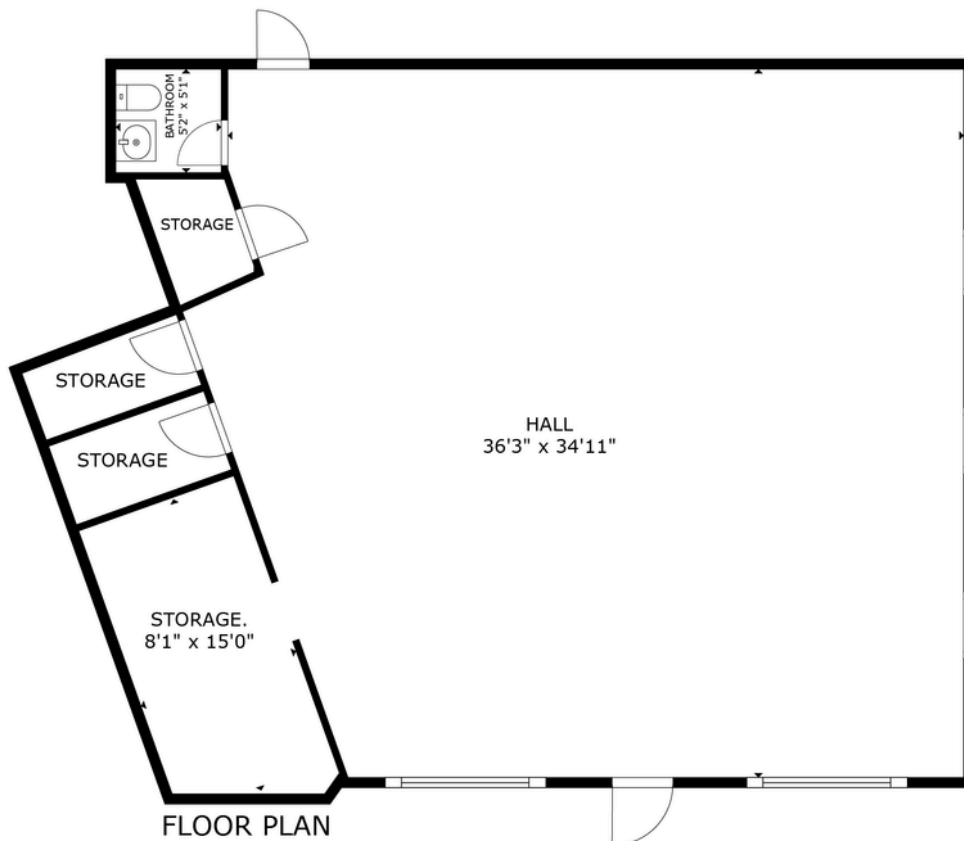
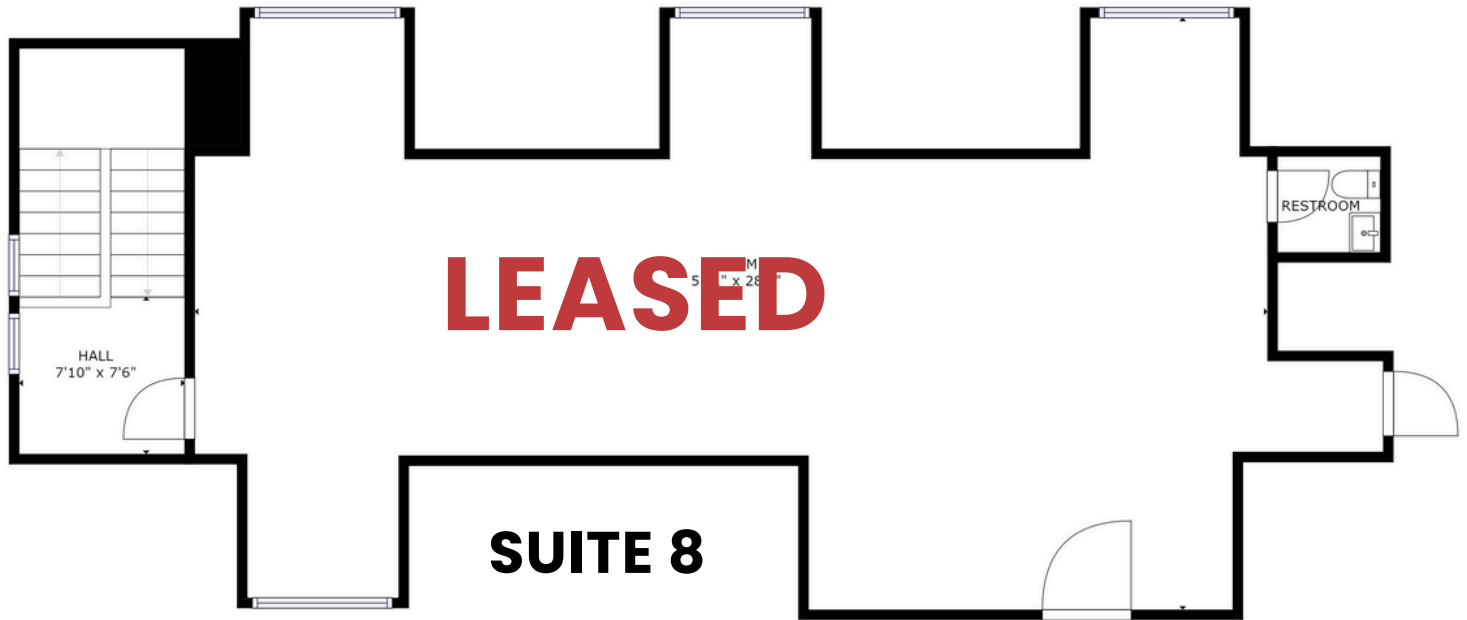


## SUITE 7



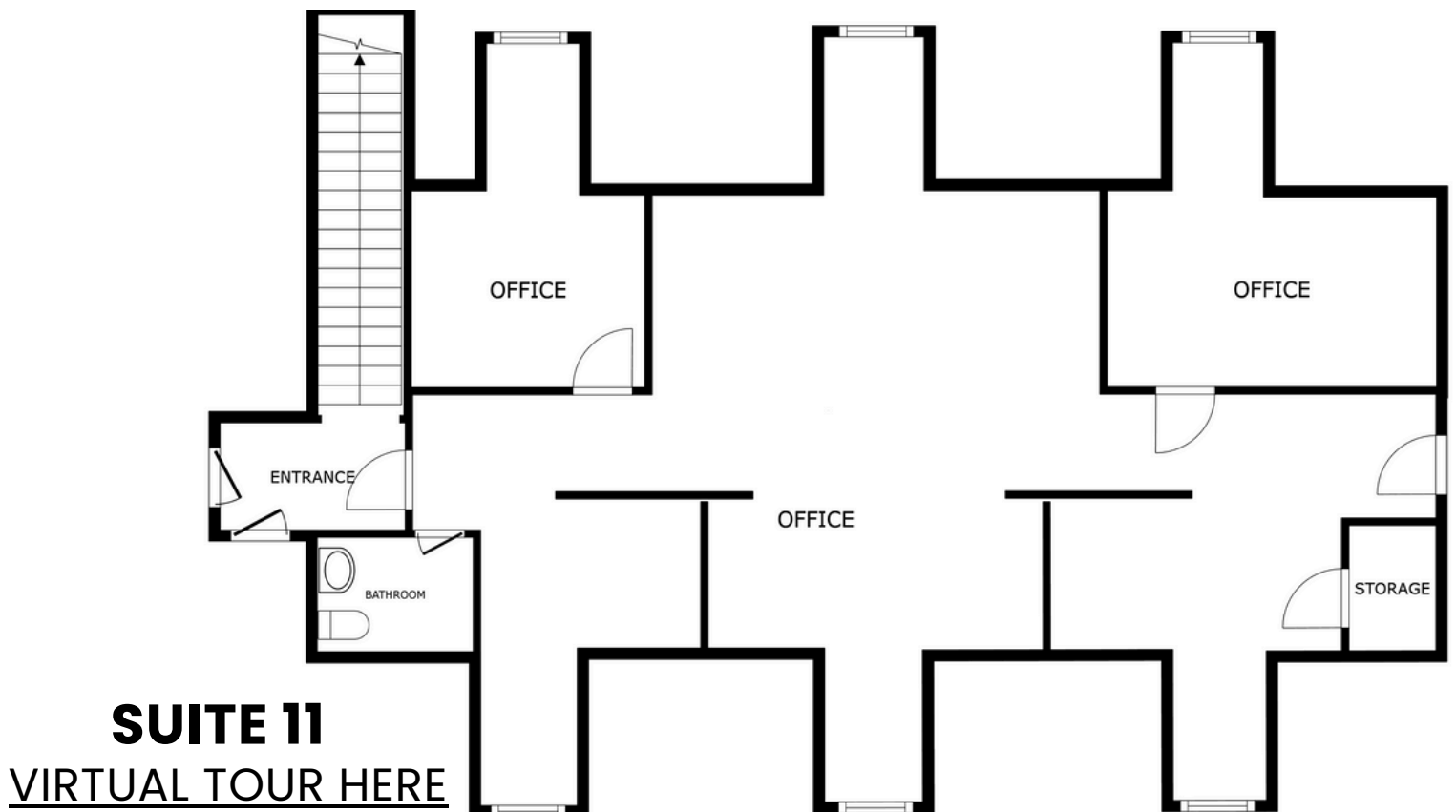
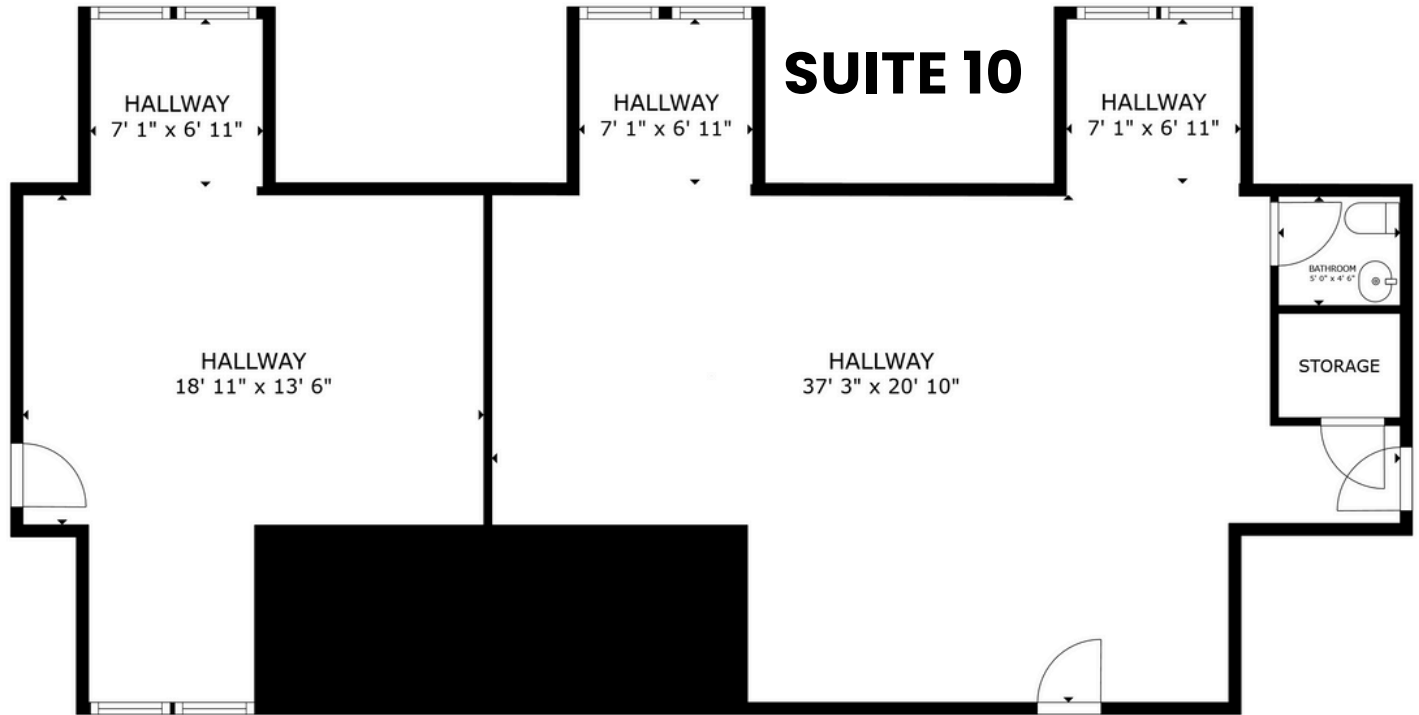
[VIRTUAL TOUR HERE](#)

# FLOOR PLAN



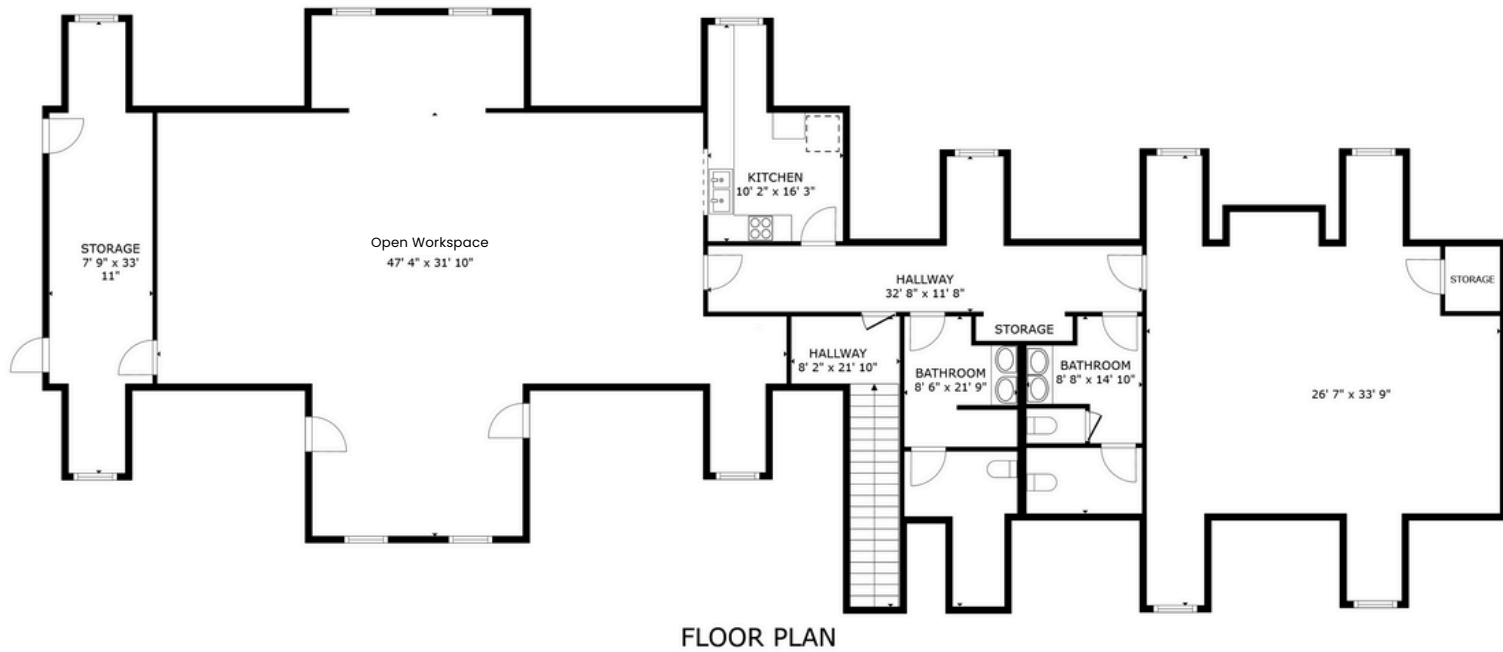
# FLOOR PLAN

[VIRTUAL TOUR HERE](#)



# FLOOR PLAN

## SUITES 13 & 14



FLOOR PLAN

# CONFIDENTIALITY & DISCLAIMER

THIS OFFERING IS SUBJECT TO THE FOLLOWING ASSUMPTIONS AND LIMITING CONDITIONS:

NAI Norwood Group assumes no responsibility for matter legal in character, nor do we render any opinion as to the title which is assumed to be good.

We believe the information furnished to us by the owners and others is reliable, but we assume no responsibility for its accuracy.

Buyers should not rely on this information, and Buyers should make their own investigation of any and all aspects.

---

PRESENTED BY:

---

**ARON BROWN**

**SENIOR ADVISOR**

tel (603) 637-2010

mobile (603) 674-1638

[abrown@nainorwoodgroup.com](mailto:abrown@nainorwoodgroup.com)



**NAI Norwood Group**

116 South River Road

Bedford, NH 03110

[www.nainorwoodgroup.com](http://www.nainorwoodgroup.com)