



**GREAT
NEW PRICE!!**



For Lease: San Anselmo Office

292 Red Hill Avenue, San Anselmo, CA

- Beautifully Remodeled Interior
- 6 Parking Spaces
- Located on Miracle Mile
- Private Restroom
- Landmark Signage

Offering Summary

Available Sq Ft:	1,360 +/- sf
Initial Base Rent:	\$2.57 psf
Lease Type:	Mod. Gross
Lease Term:	2 - 5 Years
Available:	Now



Contact:
Mark Cooper
(415) 608-1036
mark@hlcre.com
Lic# 01814831

HL Commercial Real Estate
www.hlcre.com



For Lease: San Anselmo Office

292 Red Hill Avenue, San Anselmo, CA 94960

Building/Space Description:

The top floor of this beautifully renovated freestanding building is now available for lease. This turnkey space features seven private offices, a dedicated kitchen, and a private restroom. The property is enhanced by professionally landscaped grounds and a tranquil garden setting, offering a serene and inviting environment.

Location Description:

The building is located on Miracle Mile in San Anselmo, one block from the Hub and busy downtown shops and restaurants.

Space Information/Features:

Total Available Square Feet:	1,360 +/- sq. ft.
Divisible/Can Add:	No
Parking Spaces:	6 unassigned parking spaces for tenant and street parking

Building Information/Features:

Total Building Square Feet:	2,645 +/- sq. ft.
Year Constructed:	1913 +/-
Heating & Air Conditioning:	Yes
Fire Sprinklers:	Yes
Zoning Designation:	C-3 (General Commercial District)
Flood Zone Designation:	Zone X (An area that is determined to be outside the 100- and 500-year floodplains)

Lease Information:

Minimum Lease Term:	2 - 5 years
Initial Base Rent:	\$2.57 psf (\$3,500/mo)
Base Rent Increases:	3% per year
Lease Type:	Modified Gross
Tenant Expenses:	\$500 Flat Fee for Electricity, internet, water, janitorial & garbage Tenant pays Increase over base year of RE taxes



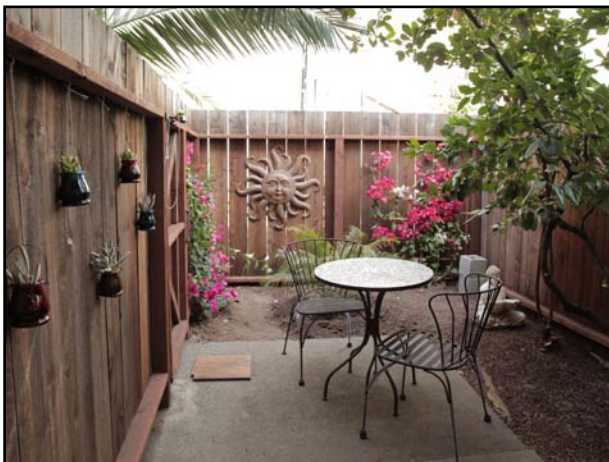
Contact:
Mark Cooper
(415) 608-1036
mark@hlcre.com
Lic# 01814831

HL Commercial Real Estate
www.hlcre.com



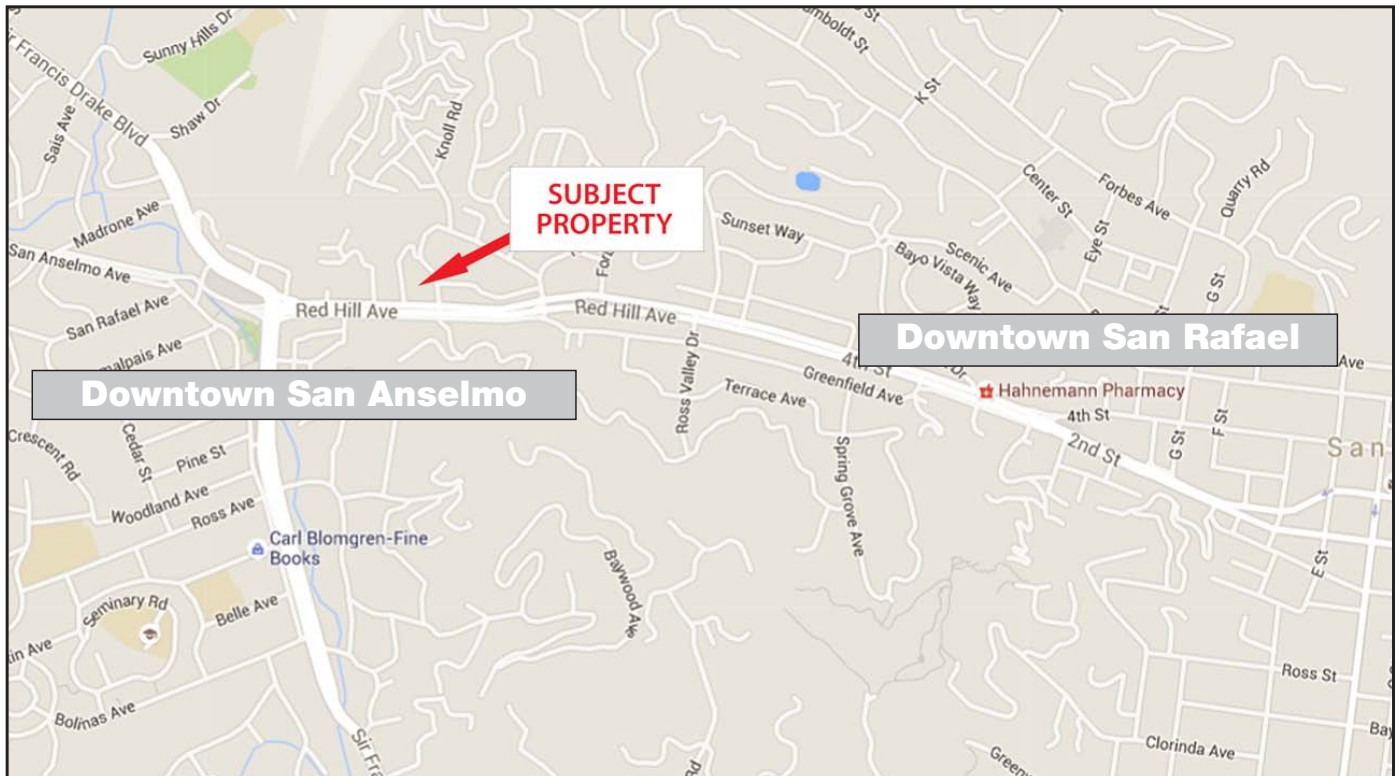
For Lease: San Anselmo Office

292 Red Hill Avenue, San Anselmo, CA 94960



For Lease: San Anselmo Office

292 Red Hill Avenue, San Anselmo, CA 94960



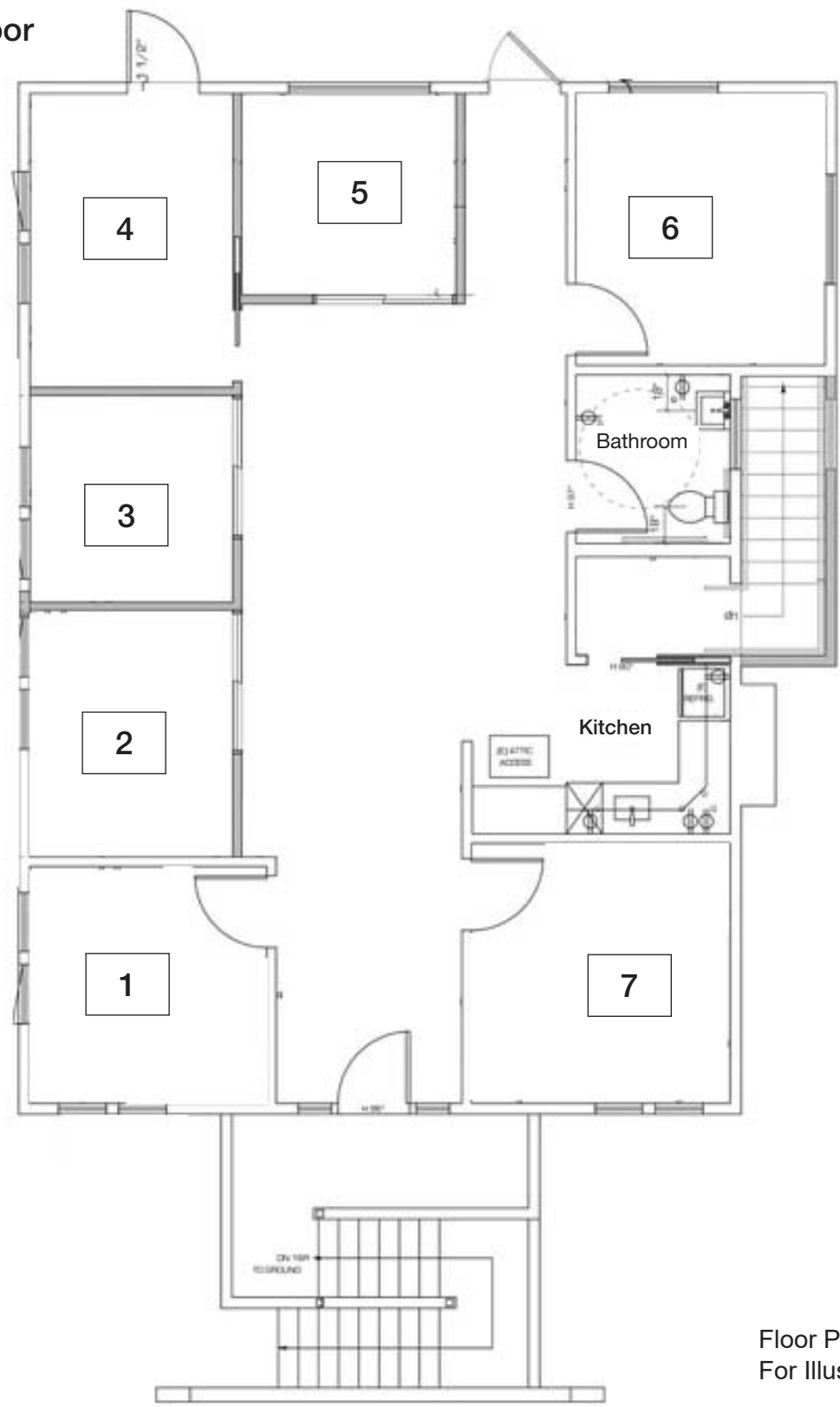
[Click here to View in Google Maps](#)



For Lease: San Anselmo Office

292 Red Hill Avenue, San Anselmo, CA 94960

Second Floor



Floor Plan Not to Scale.
For Illustration Only

Our Company



HL Commercial Real Estate (HLCRE) was founded in 1980 and is a full-service commercial brokerage and property management firm based in San Rafael, California. For more than four decades, HLCRE has been a trusted advisor to investors, business owners, and property developers throughout Marin County and the greater Bay Area. The firm's expertise spans office, retail, industrial, multifamily, mixed-use, and land transactions, representing clients in sales, leasing, and investment acquisitions.



With more than \$3.8 billion in completed transactions, HLCRE combines deep local knowledge with a sophisticated understanding of regional and statewide markets. The team's approach is built on integrity, insight, and long-term relationships—ensuring every client receives thoughtful advice and diligent execution.

- Sales
- Leases
- Seller/Landlord Representation
- Buyer/Tenant Representation
- Property Management
- Tax Deferred Exchanges

For clients seeking experience, professionalism, and a personalized approach to commercial real estate, HL Commercial Real Estate offers a proven record of performance and partnership. For a free evaluation or service description, please contact us.



Mark Cooper
(415) 608-1036
mark@hlcre.com
Lic#: 01814831

Higher Level Commercial Real Estate

70 Mitchell Blvd., Ste. 202
San Rafael, CA 94903
www.hlcre.com

