

FOR LEASE | OFFICE WAREHOUSE

River Tech Workplace

5155 - 5301 East River Road, Fridley, MN 55421



River Tech Workplace is a four-building, multi-tenant office and warehouse portfolio totaling approximately 270,022 square feet in Fridley, Minnesota. Strategically located along East River Road in the North Central submarket, the property offers convenient access to major transportation routes (Interstate 694, Highway 252 and Interstate 94) providing efficient connectivity for tenants and their employees.

Property Features

- Currently 4,900 to 12,000 SF available
- Average Clear Height 16'
- Ample Parking - 865 spaces (3.20 / 1,000 SF)
- Dock and Drive-in Loading



Comcast Business
CenturyLink



Contact Us

ERIC DUEHOLM

Partner



651.621.2550

eric@terracegroupllc.com

BEN BRUNO

Brokerage Services



651.621.2563

ben@terracegroupllc.com

TONY ROSSATO

Brokerage Services



651.621.2507

tony@terracegroupllc.com

Full Property Information at:
rivertechworkplace.com

FOR LEASE | OFFICE WAREHOUSE
River Tech Workplace
5155 - 5301 East River Road, Fridley, MN 55421

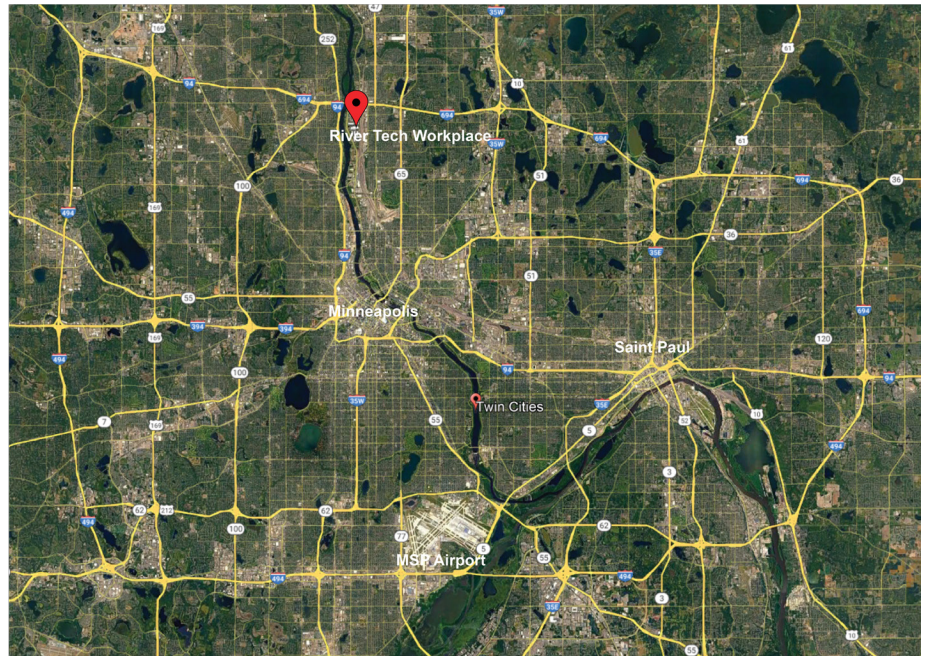


Destinations

Downtown Minneapolis
Downtown St. Paul
MSP International Airport

Drive Time

13 minutes
20 minutes
29 minutes



ERIC DUEHOLM
Partner
651.621.2550
eric@terracegroupllc.com

BEN BRUNO
Brokerage Services
651.621.2563
ben@terracegroupllc.com

TONY ROSSATO
Brokerage Services
651.621.2507
tony@terracegroupllc.com

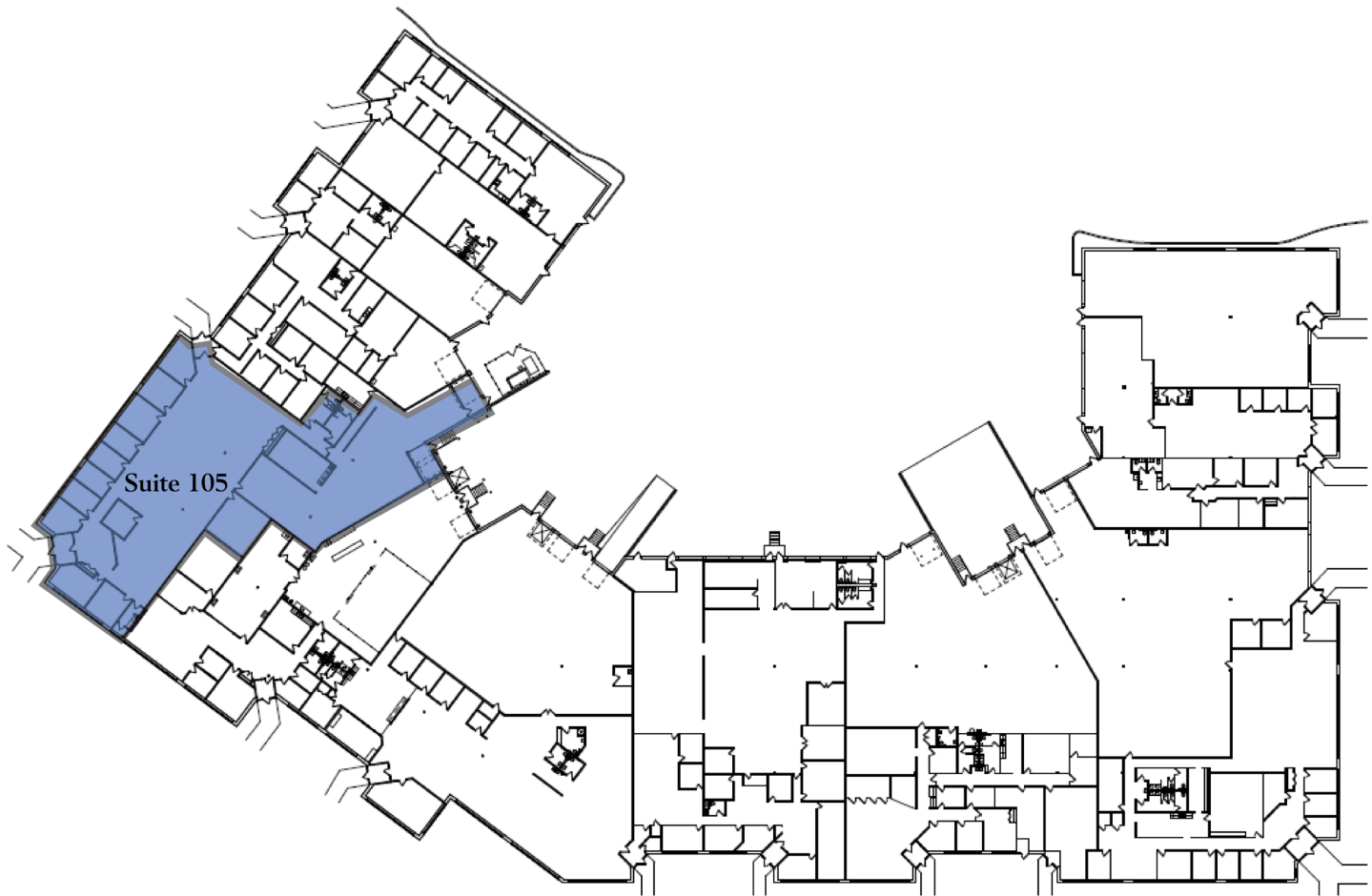
Full Property Information at:
rivertechworkplace.com

FOR LEASE | OFFICE WAREHOUSE
River Tech Workplace
5155 - 5301 East River Road, Fridley, MN 55421



Building I Suite 105

- 11,497 square feet
 - Office - 7,718 SF
 - Warehouse - 3,779 SF
- Corner unit with great glass line
- 1 dock door



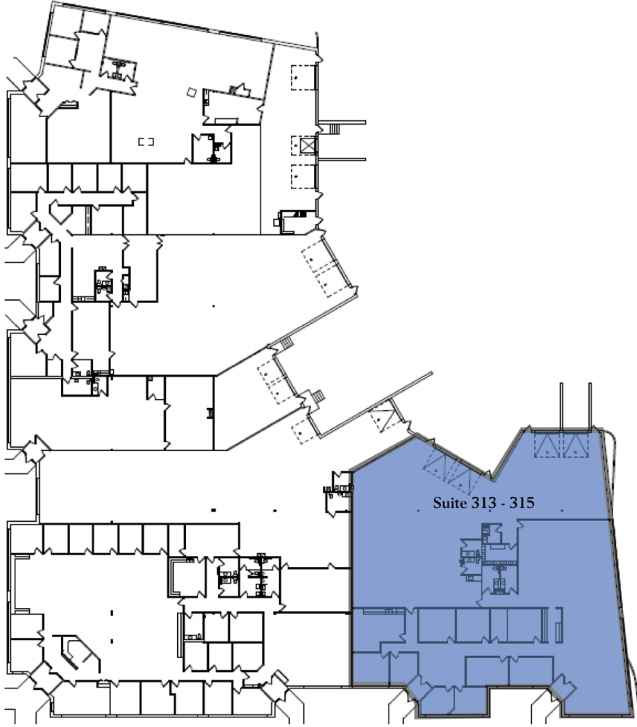
ERIC DUEHOLM
Partner
651.621.2550
eric@terracegroupllc.com

BEN BRUNO
Brokerage Services
651.621.2563
ben@terracegroupllc.com

TONY ROSSATO
Brokerage Services
651.621.2507
tony@terracegroupllc.com

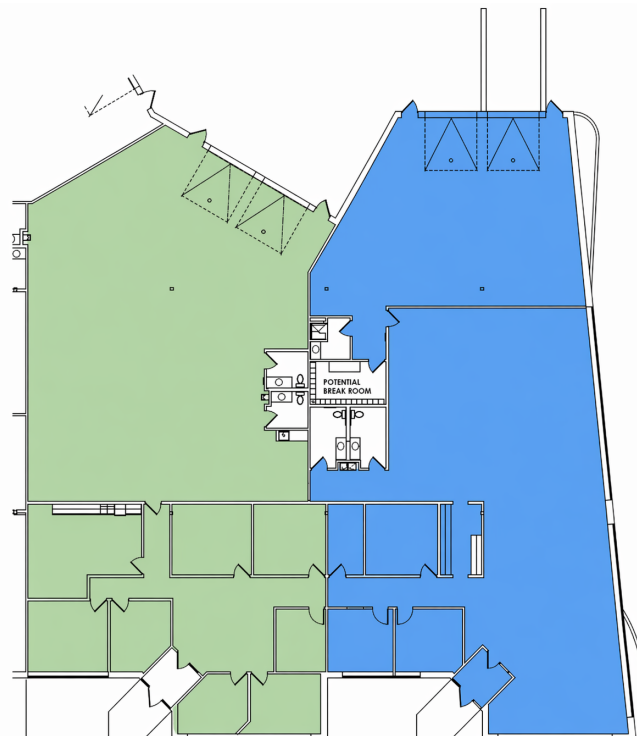
Full Property Information at:
rivertechworkplace.com

Building III Available Suites



Suites 313 - 315

- 12,054 square feet
 - Office - 6,570 SF
 - Warehouse - 5,484 SF
- 3 dock doors
- drive-in door
- Divisible to 5,914 SF



Potential Suites 313

- 5,914 square feet
 - Office - 2,322 SF
 - Warehouse - 3,592 SF
- 2 dock doors

Potential Suites 315

- 6,140 square feet
 - Office - 4,248 SF
 - Warehouse - 1,892 SF
- 1 drive-in door
- 1 dock door

ERIC DUEHOLM
Partner
651.621.2550
eric@terracegroupllc.com

BEN BRUNO
Brokerage Services
651.621.2563
ben@terracegroupllc.com

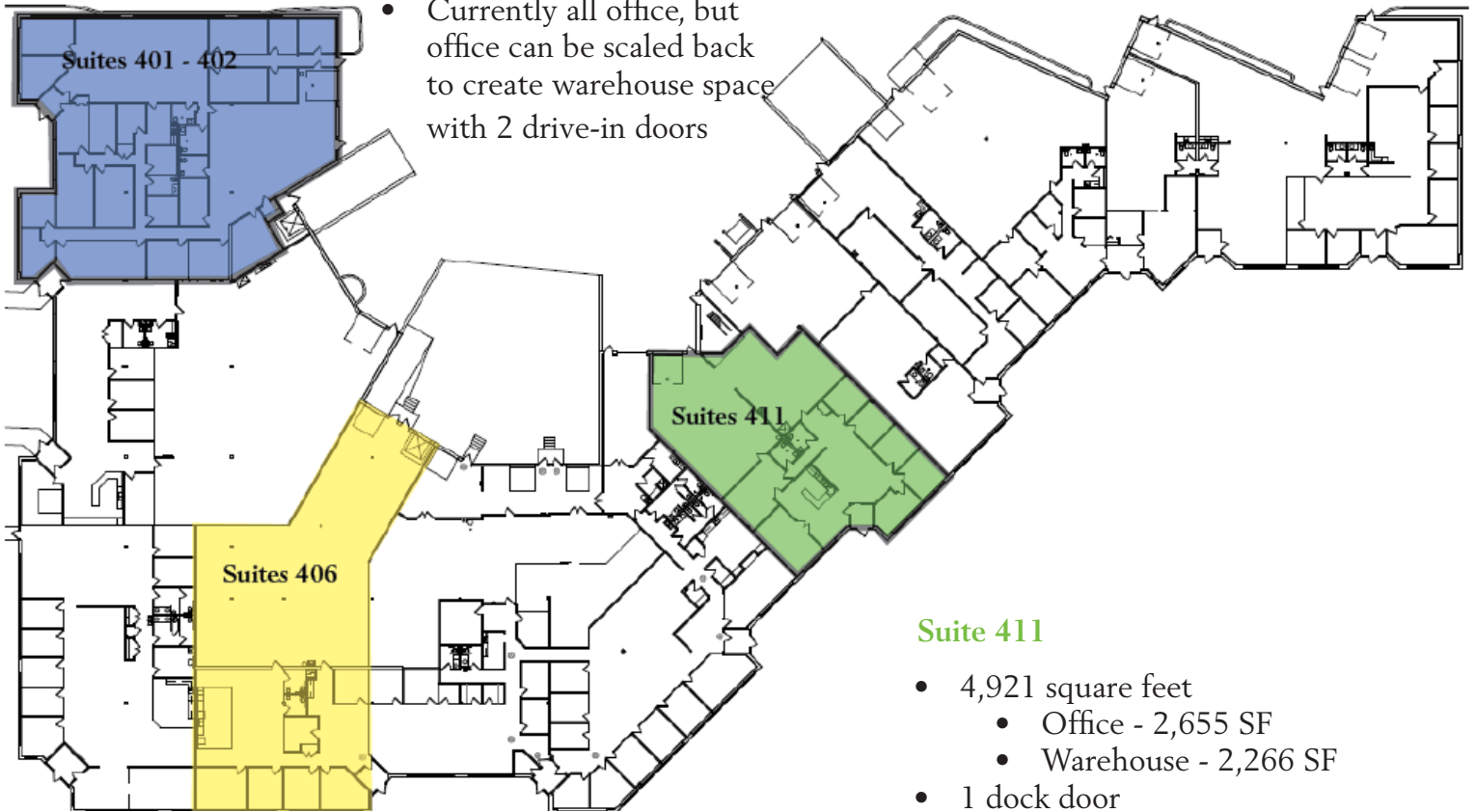
TONY ROSSATO
Brokerage Services
651.621.2507
tony@terracegroupllc.com

Full Property Information at:
rivertechworkplace.com

Building IV Available Suites

Suites 401-402

- 8,812 square feet
- 2 drive-in doors
- Currently all office, but office can be scaled back to create warehouse space with 2 drive-in doors



Suite 411

- 4,921 square feet
 - Office - 2,655 SF
 - Warehouse - 2,266 SF
- 1 dock door

Suite 406

- 6,865 square feet
- 1 dock door
- 1 drive-in door

Information is deemed reliable; however, no warranty or representation is made as to its accuracy or completeness. Property is subject to price change, prior sale or lease, and withdrawal from the market, all without notice.

ERIC DUEHOLM

Partner

651.621.2550

eric@terracegroupllc.com

BEN BRUNO

Brokerage Services

651.621.2563

ben@terracegroupllc.com

TONY ROSSATO

Brokerage Services

651.621.2507

tony@terracegroupllc.com

Full Property Information at:
rivertechworkplace.com