

Office Property For Lease

# 300 Meridian Place

300 N. Meridian Avenue, Oklahoma City, OK 73107



## Property Overview

This multi-tenant office building was built in 1982 and renovated in 2009. The main entry has been refurbished with Venezuelan marble floors, imported chandeliers, and the construction of a security guard desk. Building has on-site security and controlled 24 hour access, as well as, high speed data/communications connectivity. Additionally, all bathrooms have been renovated and updated as well. Twenty-four hour tenant controlled HVAC available.

## Details

- Building Size: 79,371 SF
- Year Built: 1982
- Market: Oklahoma City
- Sub Market: South

**Newmark Grubb**

Levy Strange Beffort

**Brad Rice**

c. 918-269-8586

brice@newmarklsb.com

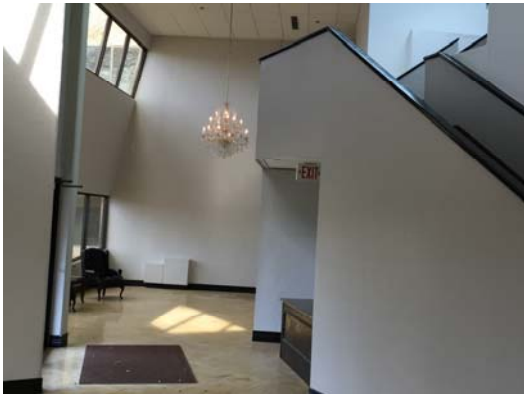
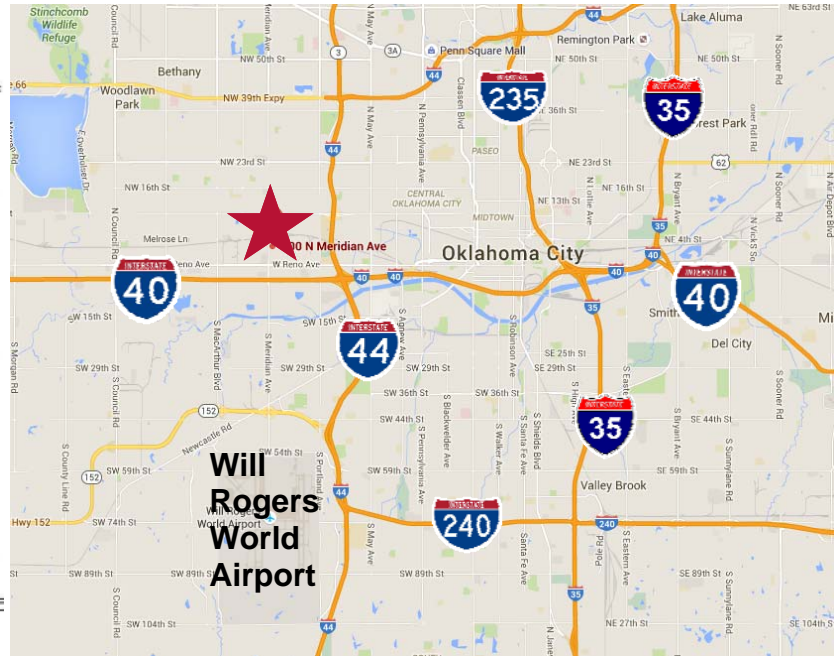
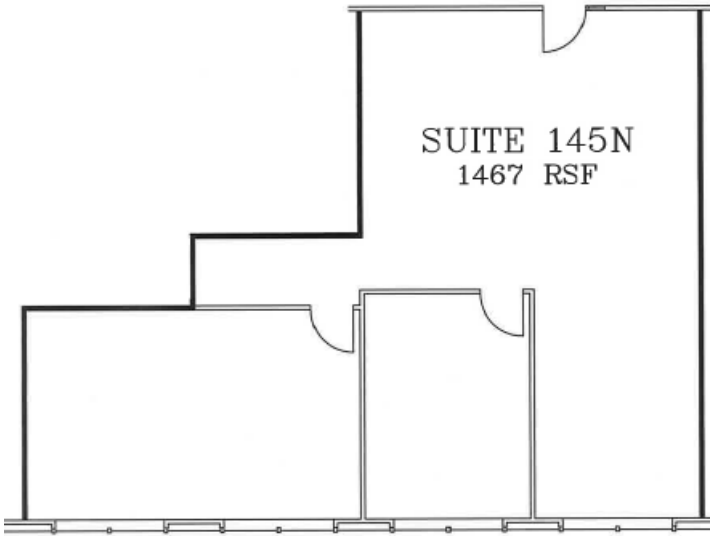
MORE INFORMATION  
AVAILABLE ONLINE:

[www.newmarklsb.com](http://www.newmarklsb.com)

Office Property For Lease

# 300 Meridian Place

300 N. Meridian Avenue, Oklahoma City, OK 73107



## Snapshot

North Building	
Suite 145N	1,467 SF
Rental Rate	\$12.00/SF
Lease Type	Full Service Gross
Lease Term	3 - 5 Years

## Property Highlights

- Large floor plates for tenants of any size
- On site security
- Controlled building access
- Ample surface parking
- Conveniently located close to I-40 and Will Rogers World Airport
- Restaurants & Hotels Within 1 Mile

**Newmark Grubb**  
**Levy Strange Beffort**

[www.newmarklsb.com](http://www.newmarklsb.com)

**OKLAHOMA CITY**  
204 N. Robinson, Suite 700  
Oklahoma City, OK 73102  
405-840-1500

**TULSA**  
110 W. 7th Street, Suite 2600  
Tulsa, OK 74119

The information contained herein was obtained from sources believed reliable; however, Newmark Grubb Levy Strange Beffort makes no guarantees, warranties or representations as to the completeness or accuracy thereof. The presentation of this property is submitted subject to errors, omissions, change of price or conditions prior to sale or lease, or withdrawal without notice. Independently Owned and Operated.