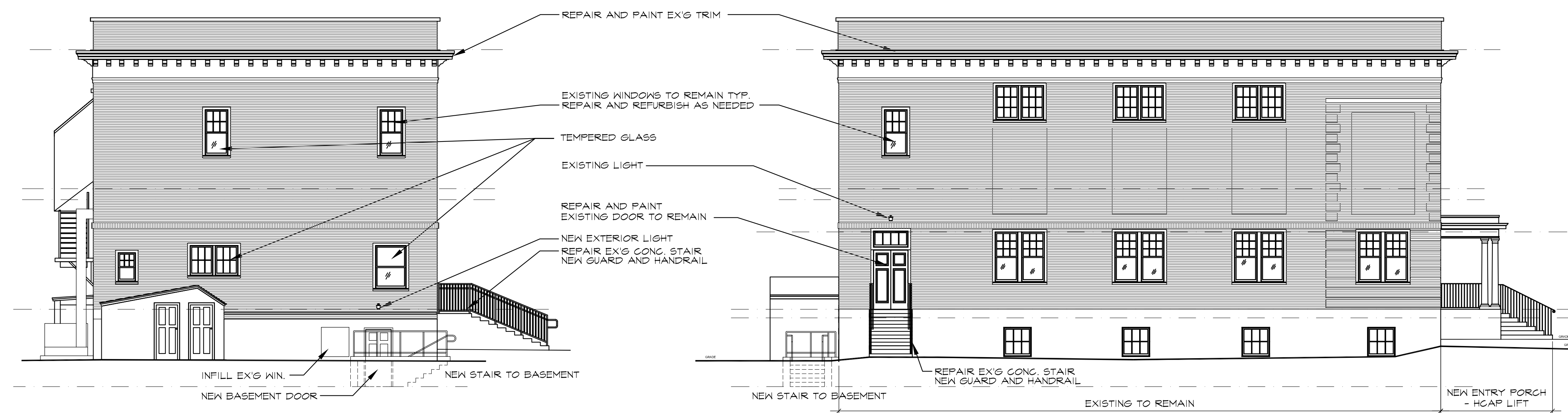


EAST ELEVATION
 SCALE: 1/8" = 1'-0"

NORTH ELEVATION
 SCALE: 1/8" = 1'-0"



WEST ELEVATION
 SCALE: 1/8" = 1'-0"

SOUTH ELEVATION
 SCALE: 1/8" = 1'-0"

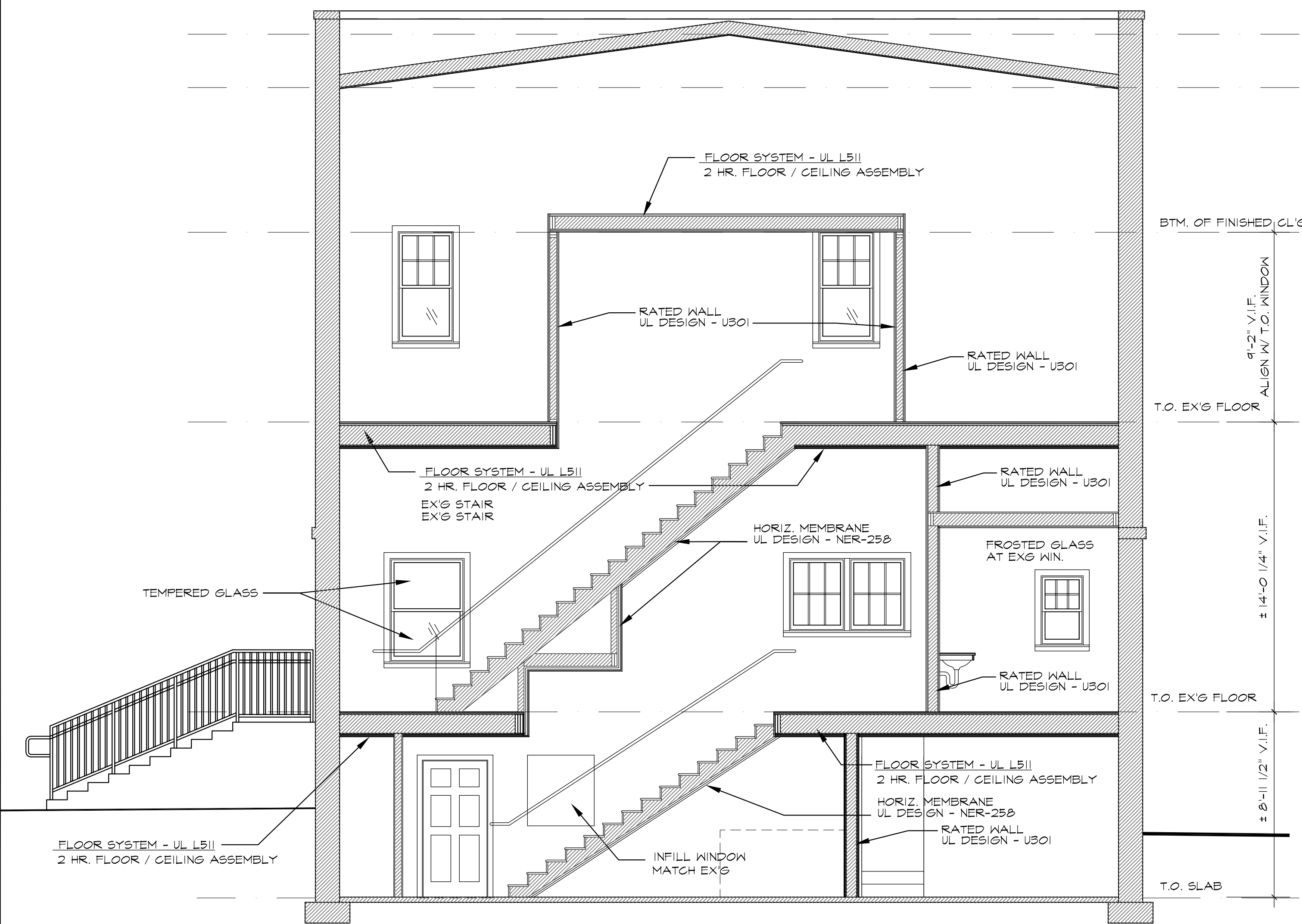
© 2019 KEMPER ASSOCIATES ARCHITECTS, LLC
 COPYRIGHT WARNING: FEDERAL COPYRIGHT PROTECTION
 EXTENDS TO ORIGINAL AND MODIFIED DERIVATIVE PLANS.
 AS APPLICABLE TO INTENTIONAL AND UNINTENTIONAL
 INFRINGEMENT, AND PROVIDES FOR SPECIFIC STATUTORY
 DAMAGES, BOTH CIVIL AND CRIMINAL. THESE
 ARCHITECTURAL WORKS ARE COPYRIGHTED AND PROTECTED
 BY TITLE 17 OF THE U.S. STATE CODE AND REPRODUCTIONS
 ARE STRICTLY PROHIBITED AND FORBIDDEN.



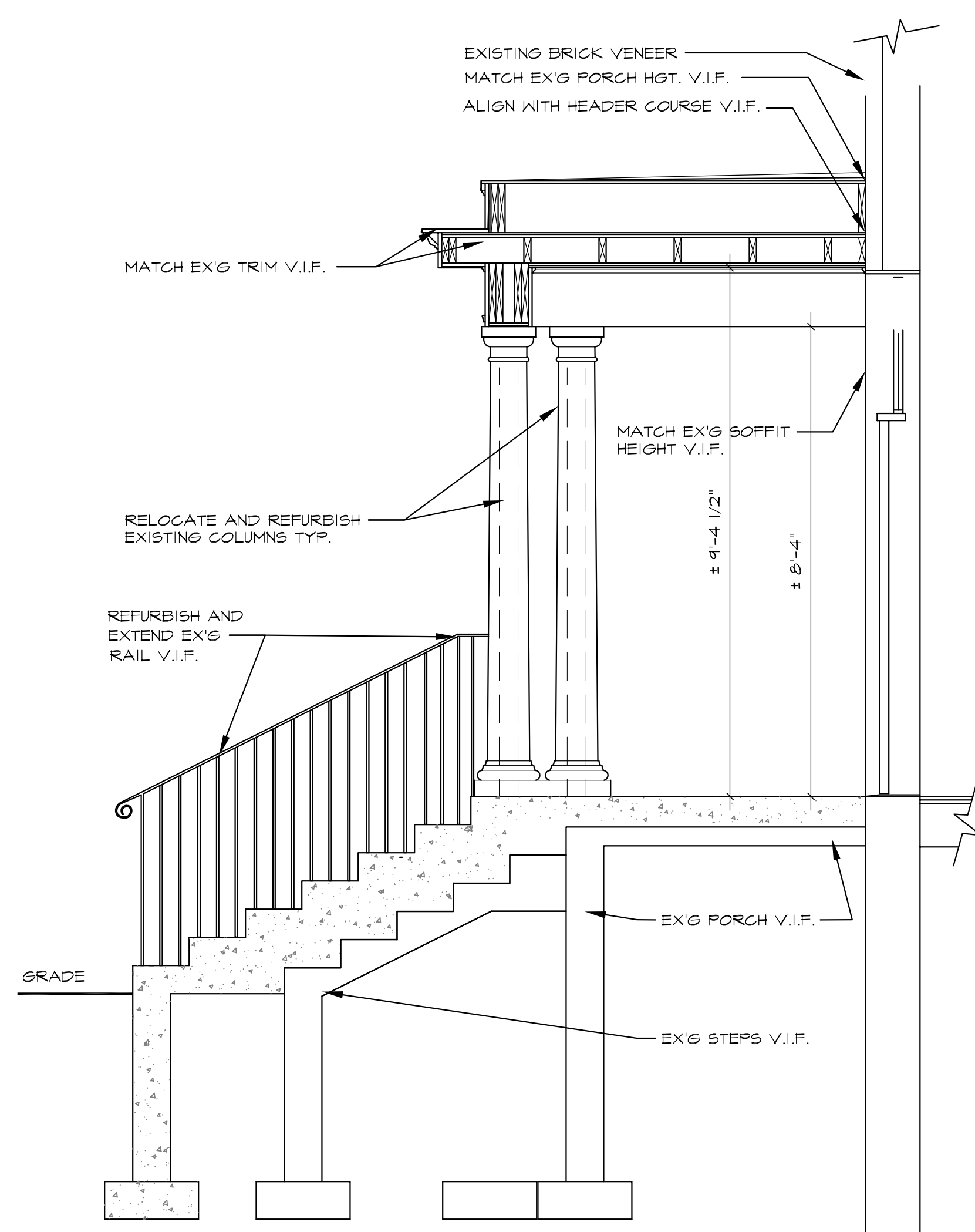
EAST ELEVATION
 SCALE: 1/4" = 1'-0"



NORTH ELEVATION
 SCALE: 1/4" = 1'-0"

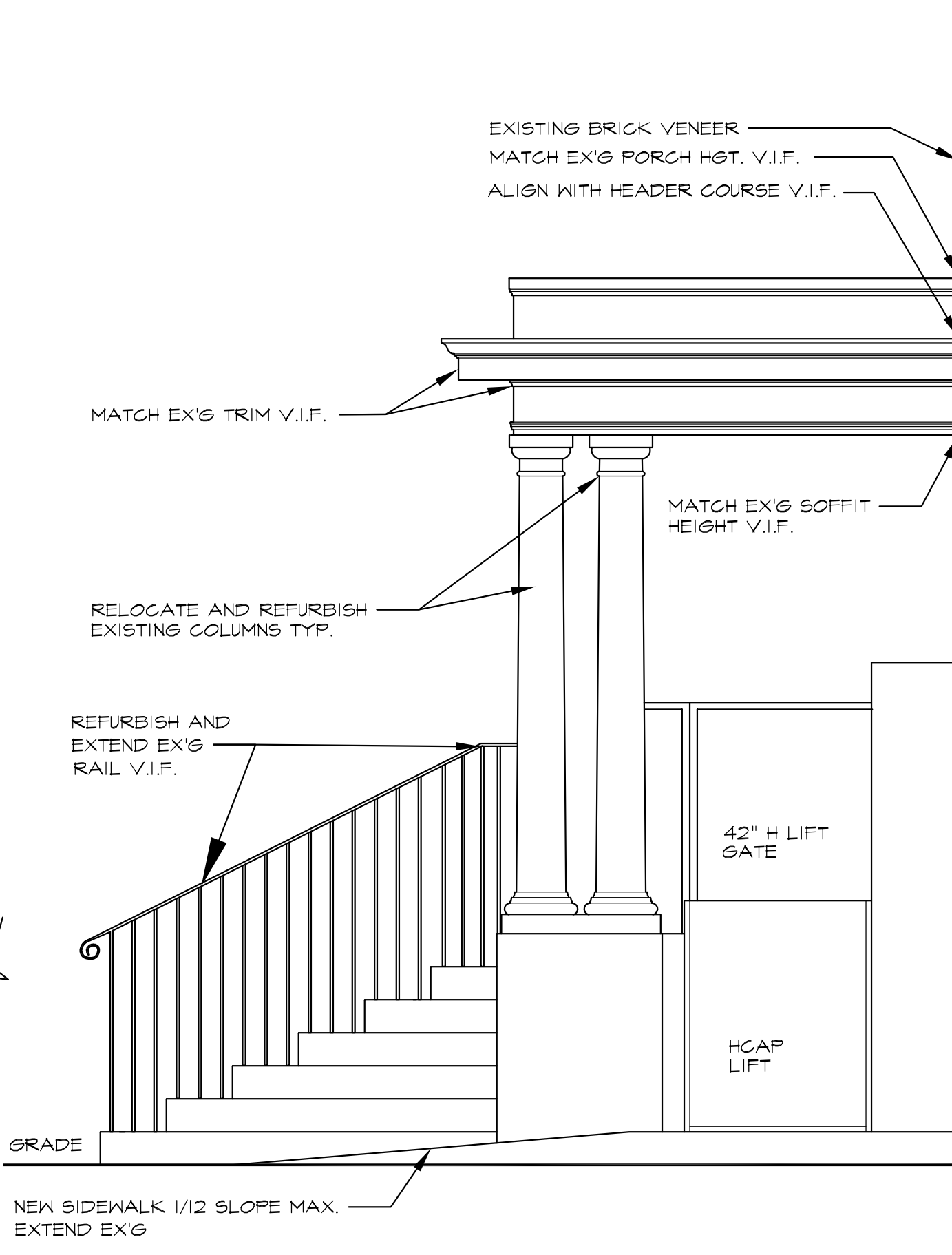


BUILDING SECTION
 SCALE: 1/4" = 1'-0"



PORCH SECTION
 SCALE: 1/2" = 1'-0"

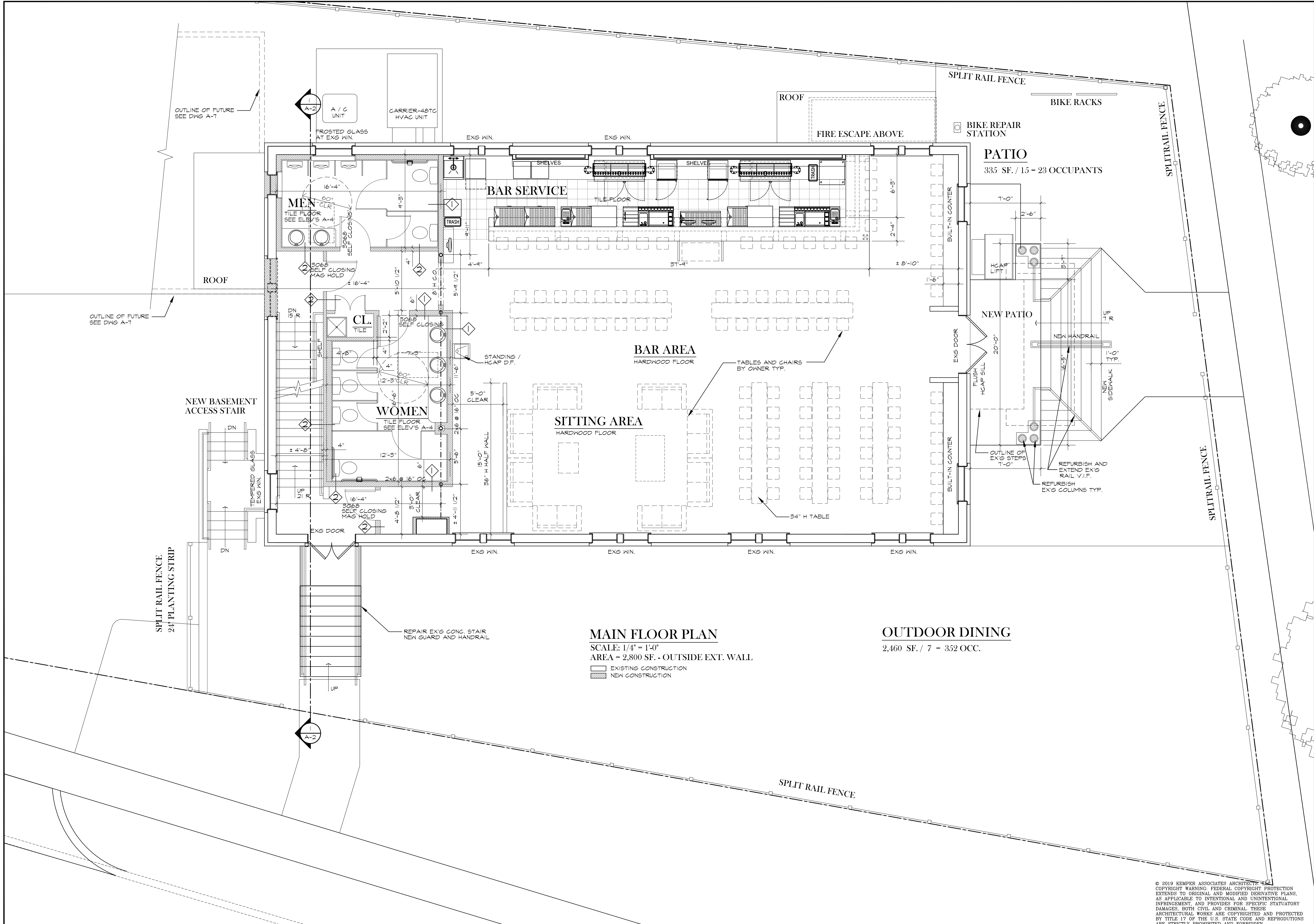
SEE FRAMING PLAN FOR STRUCTURE AND FRAMING MATERIALS



PORCH ELEVATION
 SCALE: 1/2" = 1'-0"

SEE FRAMING PLAN FOR STRUCTURE AND FRAMING MATERIALS

© 2019 KEMPER ASSOCIATES ARCHITECTS, LLC
 COPYRIGHT WARNING: FEDERAL COPYRIGHT PROTECTION EXTENDS TO ORIGINAL AND MODIFIED DERIVATIVE PLANS, AS APPLICABLE TO INTENTIONAL AND UNINTENTIONAL INFRINGEMENT, AND PROVIDES FOR SPECIFIC STATUTORY DAMAGES, BOTH CIVIL AND CRIMINAL. THESE ARCHITECTURAL WORKS ARE COPYRIGHTED AND PROTECTED BY TITLE 17 OF THE U.S. STATE CODE AND REPRODUCTIONS ARE STRICTLY PROHIBITED AND FORBIDDEN.



MAIN FLOOR PLAN
 SCALE: 1/4" = 1'-0"
 AREA = 2,800 SF. - OUTSIDE EXT. WALL

OUTDOOR DINING
 2,460 SF. / 7 = 352 OCC.

EXISTING CONSTRUCTION
 NEW CONSTRUCTION

Date
8-3-22

Revision

Kemper Associates Architects LLC
 790 Farmington Avenue • Bldg. 2 • Farmington, Connecticut 06032
 (860) 409 - 7155 Fax (860) 409 - 7160

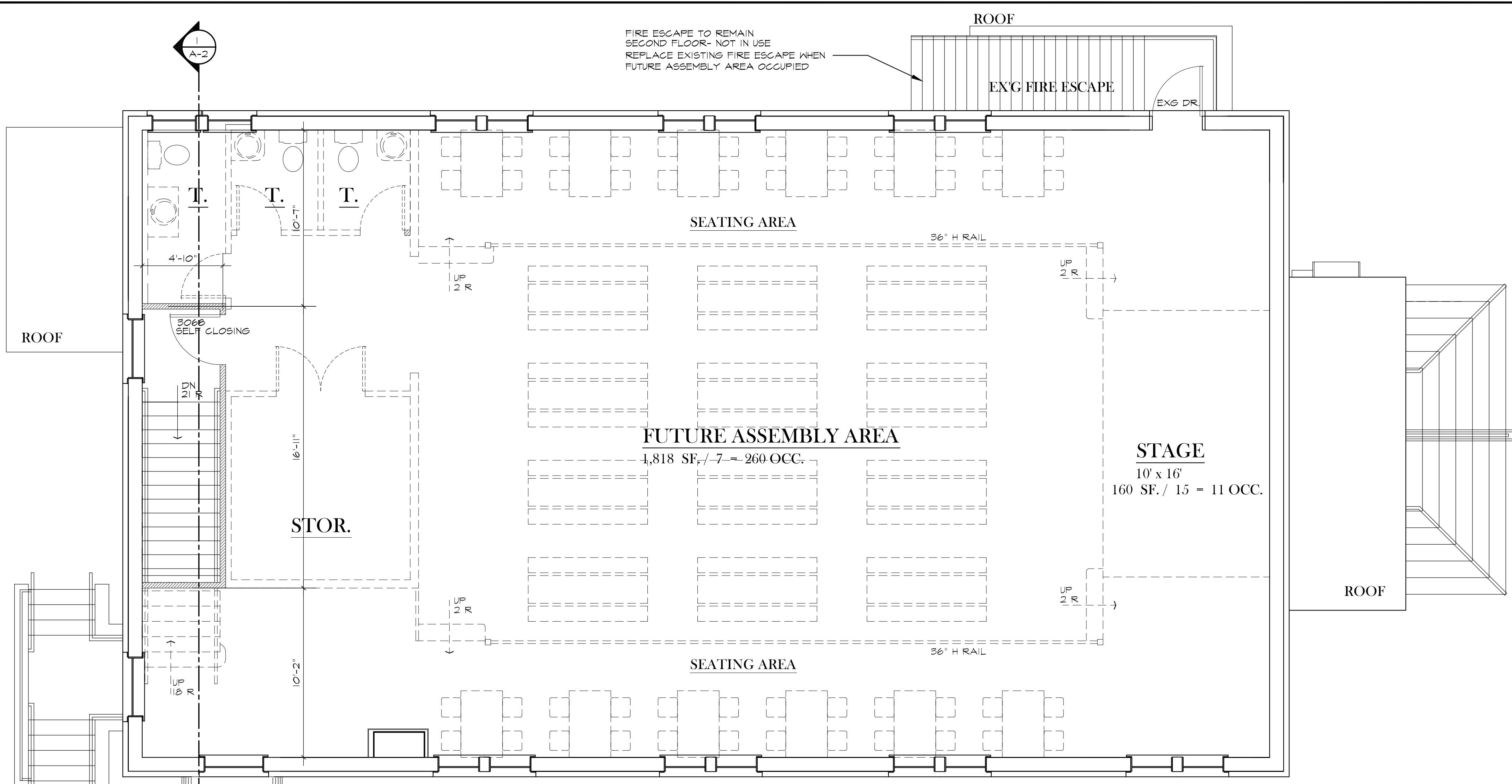
HARTFORD BREWING COMPANY, LLC
 245 MAIN STREET
 WETHERSFIELD, CT

FIRST FLOOR PLAN

Checked By

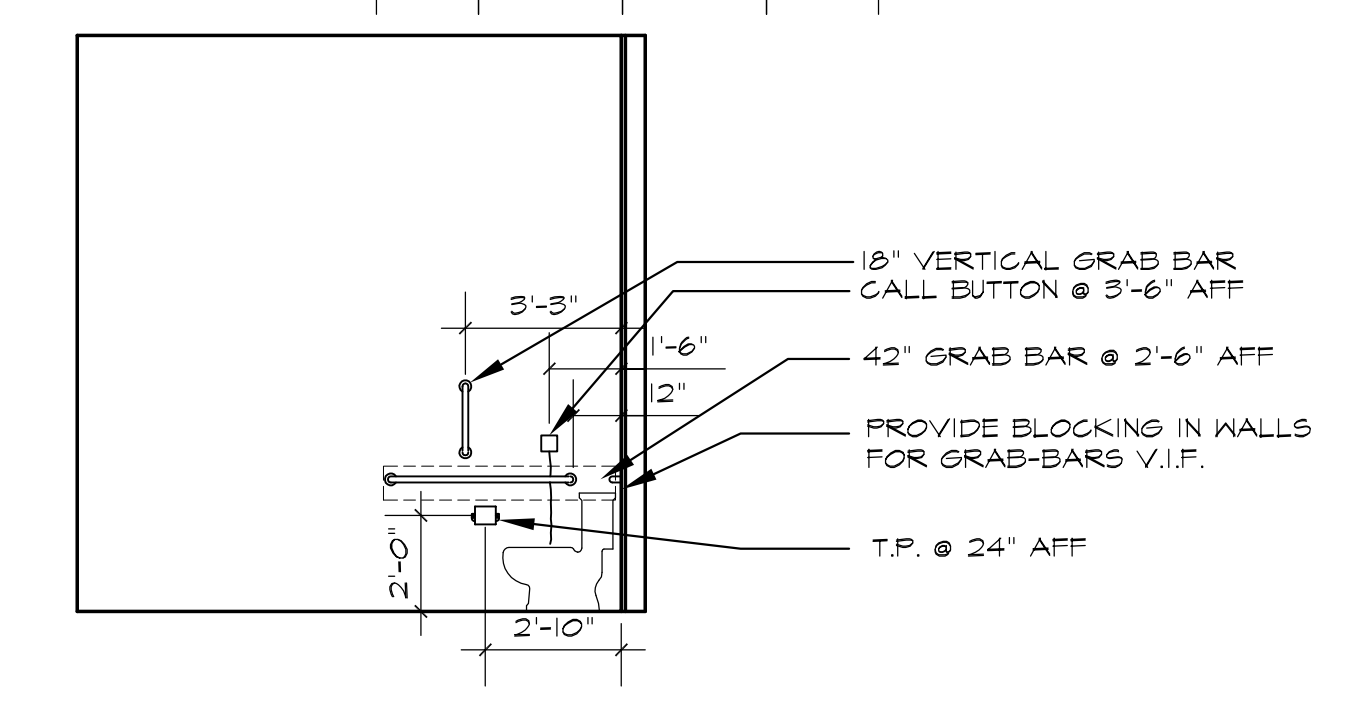
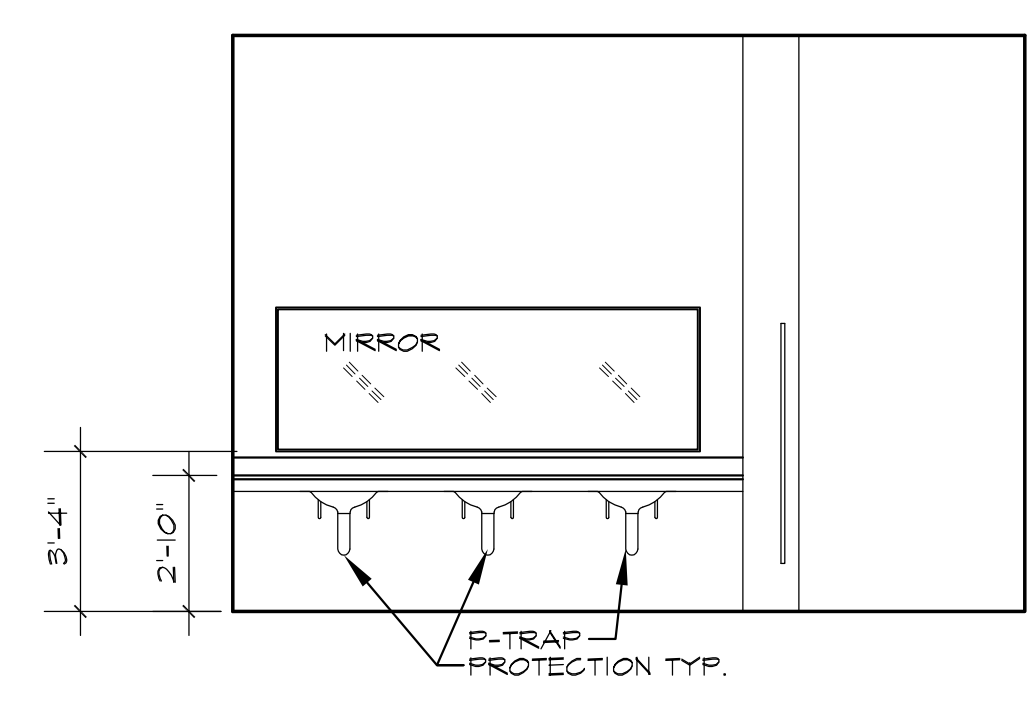
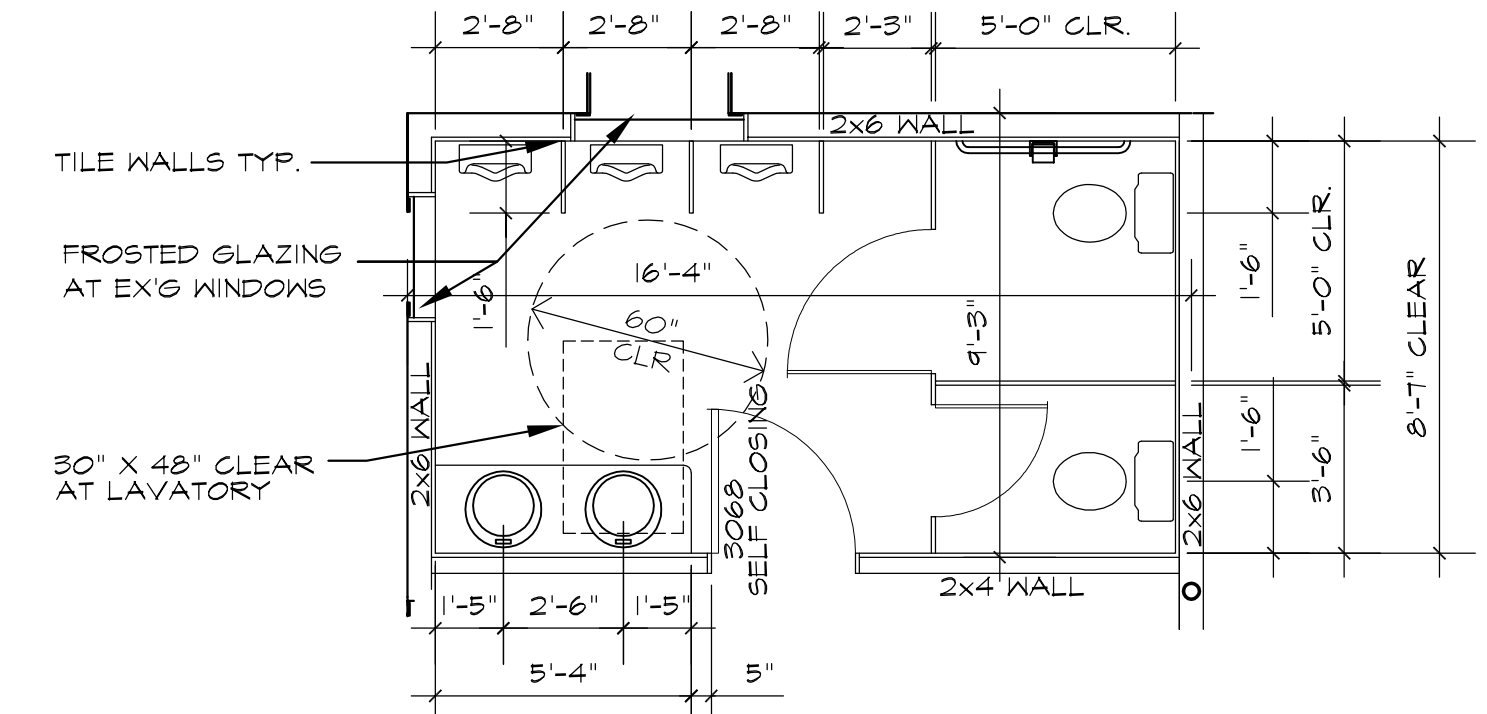
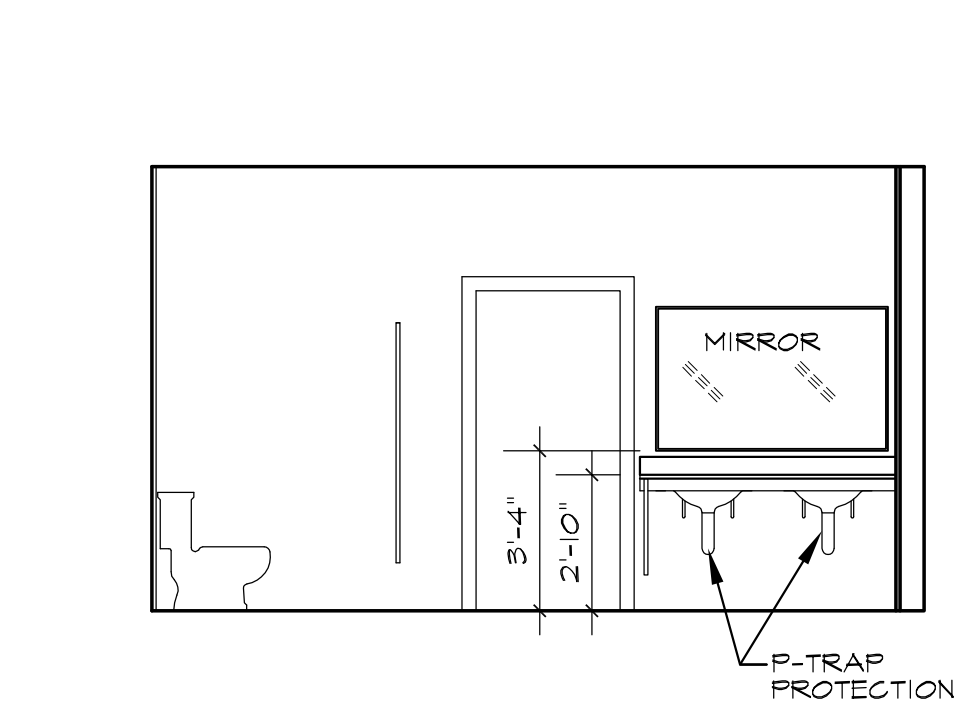
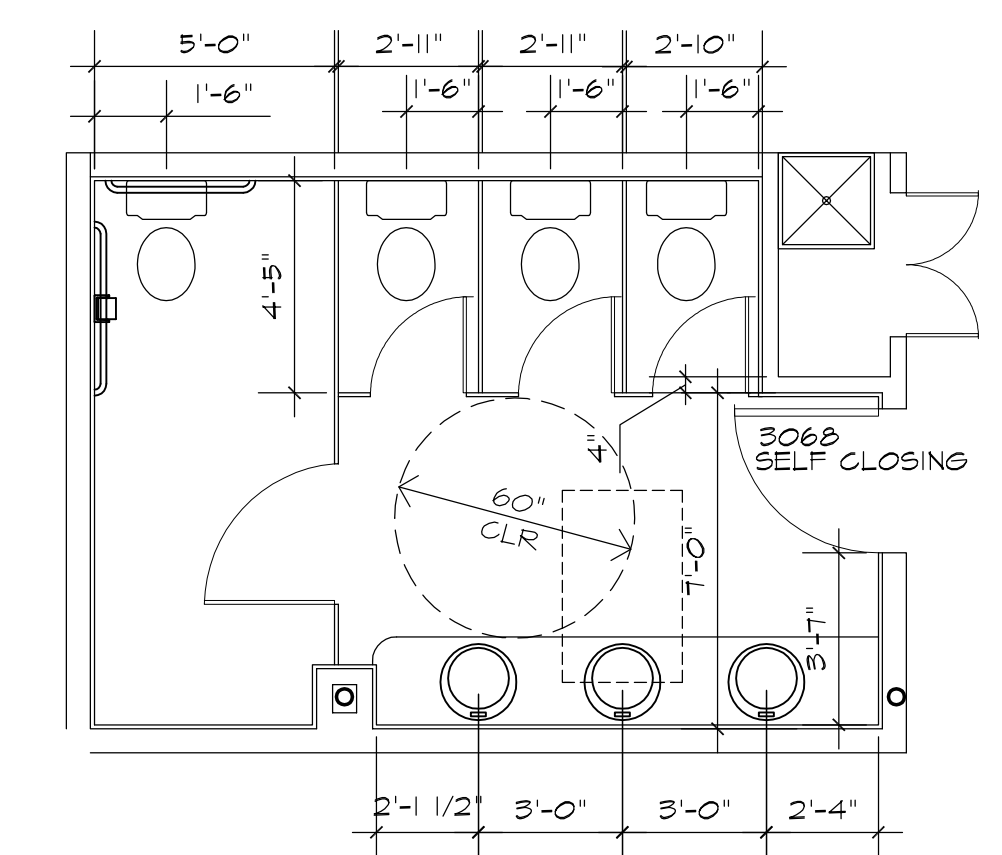
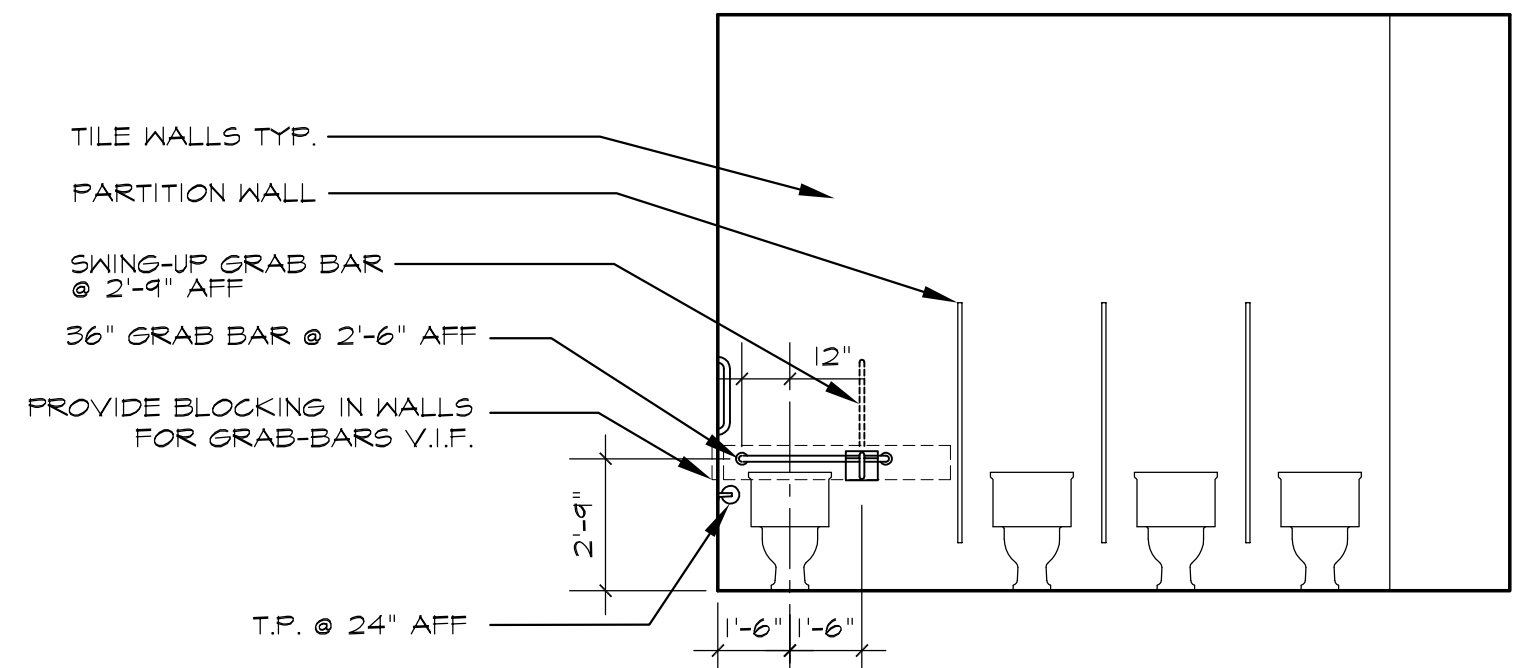
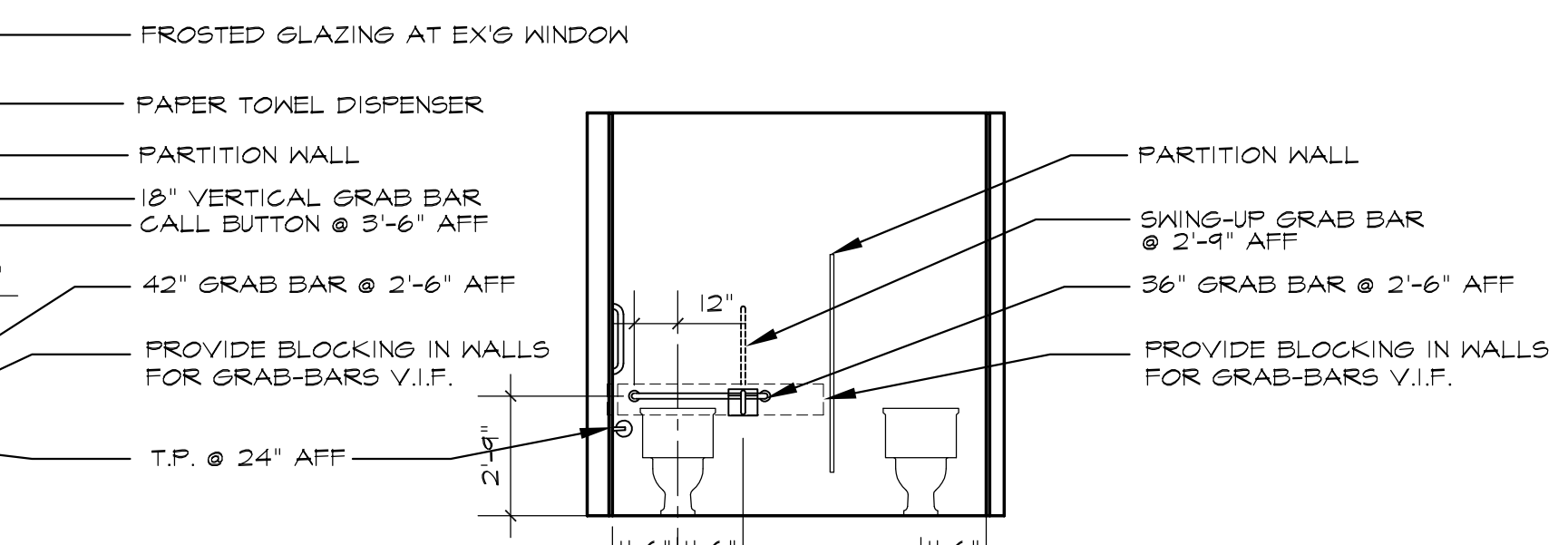
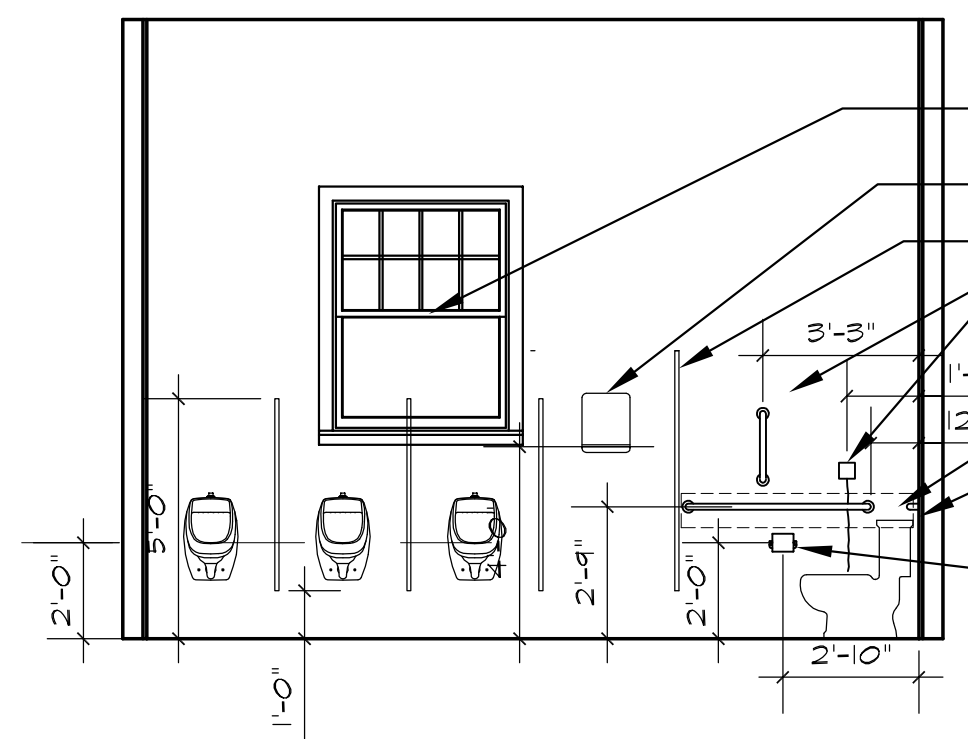
Sheet No.
A-3
 OF 9

© 2019 KEMPER ASSOCIATES ARCHITECTS, LLC
 COPYRIGHT WARNING: FEDERAL COPYRIGHT PROTECTION
 EXTENDS TO ORIGINAL AND MODIFIED DERIVATIVE PLANS.
 AS APPLICABLE TO INTENTIONAL AND UNINTENTIONAL
 INFRINGEMENT, AND PROVIDES FOR SPECIFIC STATUTORY
 DAMAGES, BOTH CIVIL AND CRIMINAL. THESE
 ARCHITECTURAL WORKS ARE COPYRIGHTED AND PROTECTED
 BY TITLE 17 OF THE U.S. STATE CODE AND REPRODUCTIONS
 ARE STRICTLY PROHIBITED AND FORBIDDEN.



SECOND FLOOR PLAN

SCALE: 1/4" = 1'-0"
 AREA = 2,548 SF.
 OCCUPANTS = 271
 [] EXISTING CONSTRUCTION
 [] NEW CONSTRUCTION



MEN'S ROOM
 SCALE: 1/4" = 1'-0"

WOMEN'S ROOM
 SCALE: 1/4" = 1'-0"

Date
8-3-22
 Revision

Kemper Associates Architects LLC
 790 Farmington Avenue • Bldg. 2 • Farmington, Connecticut 06032
 (860) 409 - 7155 Fax (860) 409 - 7160

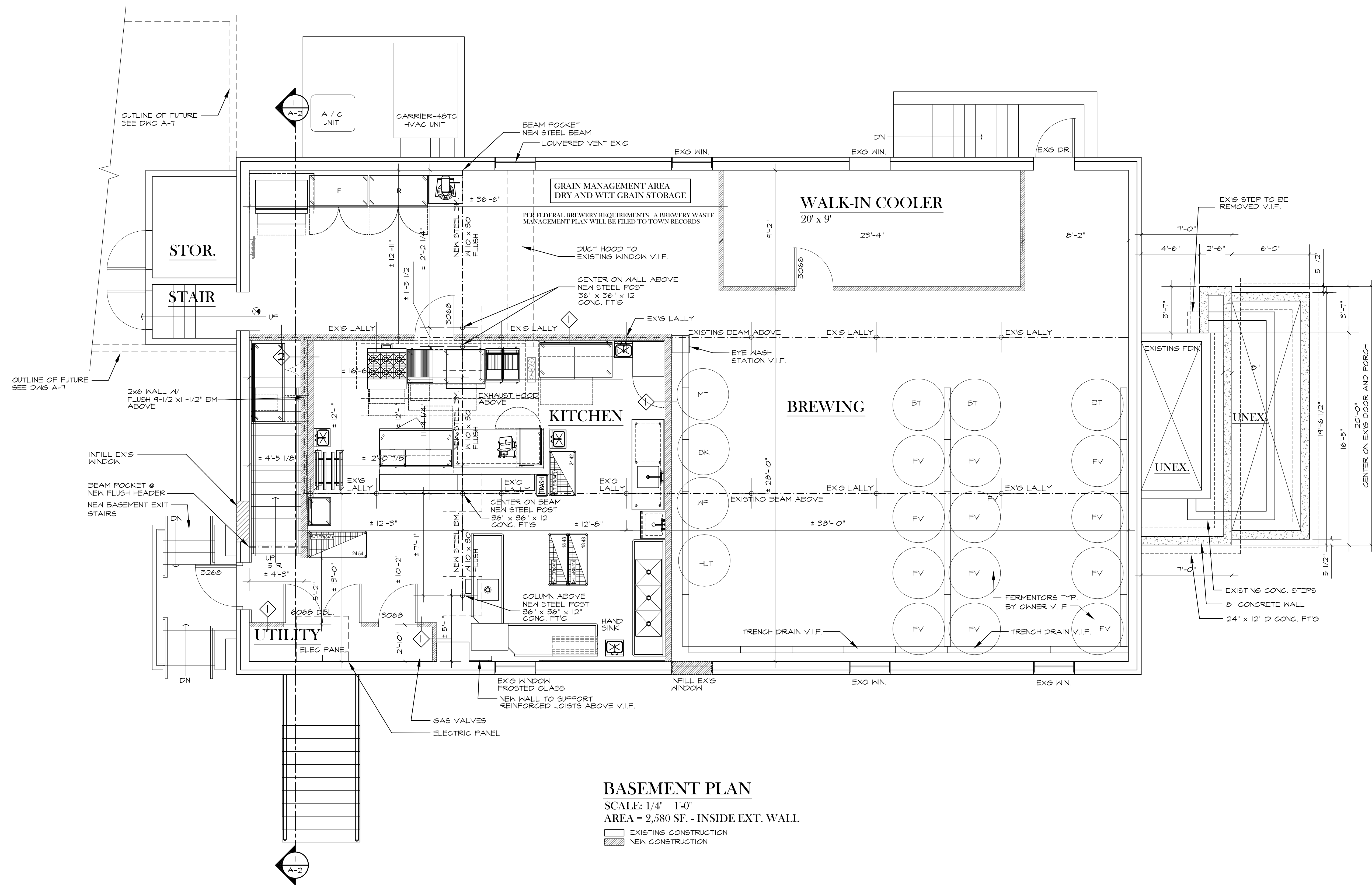
HARTFORD BREWING COMPANY, LLC
 245 MAIN STREET
 WETHERSFIELD, CT

SECOND FLOOR PLAN

Checked By

Sheet No.
A-4
 OF 9

© 2019 KEMPER ASSOCIATES ARCHITECTS, LLC
 COPYRIGHT WARNING: FEDERAL COPYRIGHT PROTECTION EXTENDS TO ORIGINAL AND MODIFIED DERIVATIVE PLANS, AS APPLICABLE TO INTENTIONAL AND UNINTENTIONAL INFRINGEMENT, AND PROVIDES FOR SPECIFIC STATUTORY DAMAGES, BOTH CIVIL AND CRIMINAL. THESE ARCHITECTURAL WORKS ARE COPYRIGHTED AND PROTECTED BY TITLE 17 OF THE U.S. STATE CODE AND REPRODUCTIONS ARE STRICTLY PROHIBITED AND FORBIDDEN.



Date
 8-3-22

Revision

Kemper Associates Architects LLC
 790 Farmington Avenue • Bldg. 2 • Farmington, Connecticut 06032
 (860) 409 - 7155 Fax (860) 409 - 7160

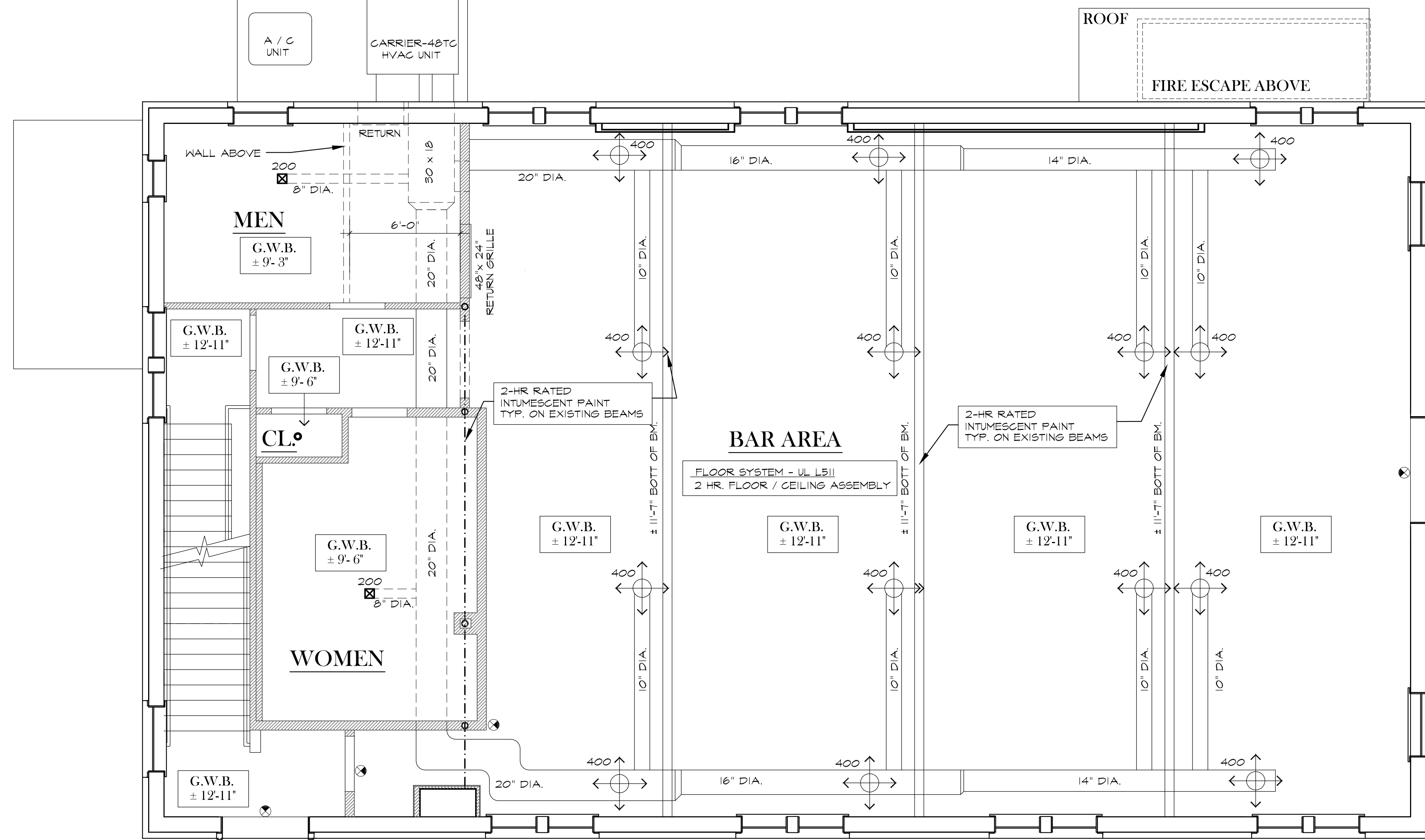
HARTFORD BREWING COMPANY, LLC
 245 MAIN STREET
 WETHERSFIELD, CT

BASEMENT PLAN

Checked By

Sheet No.
 A-5
 OF 9

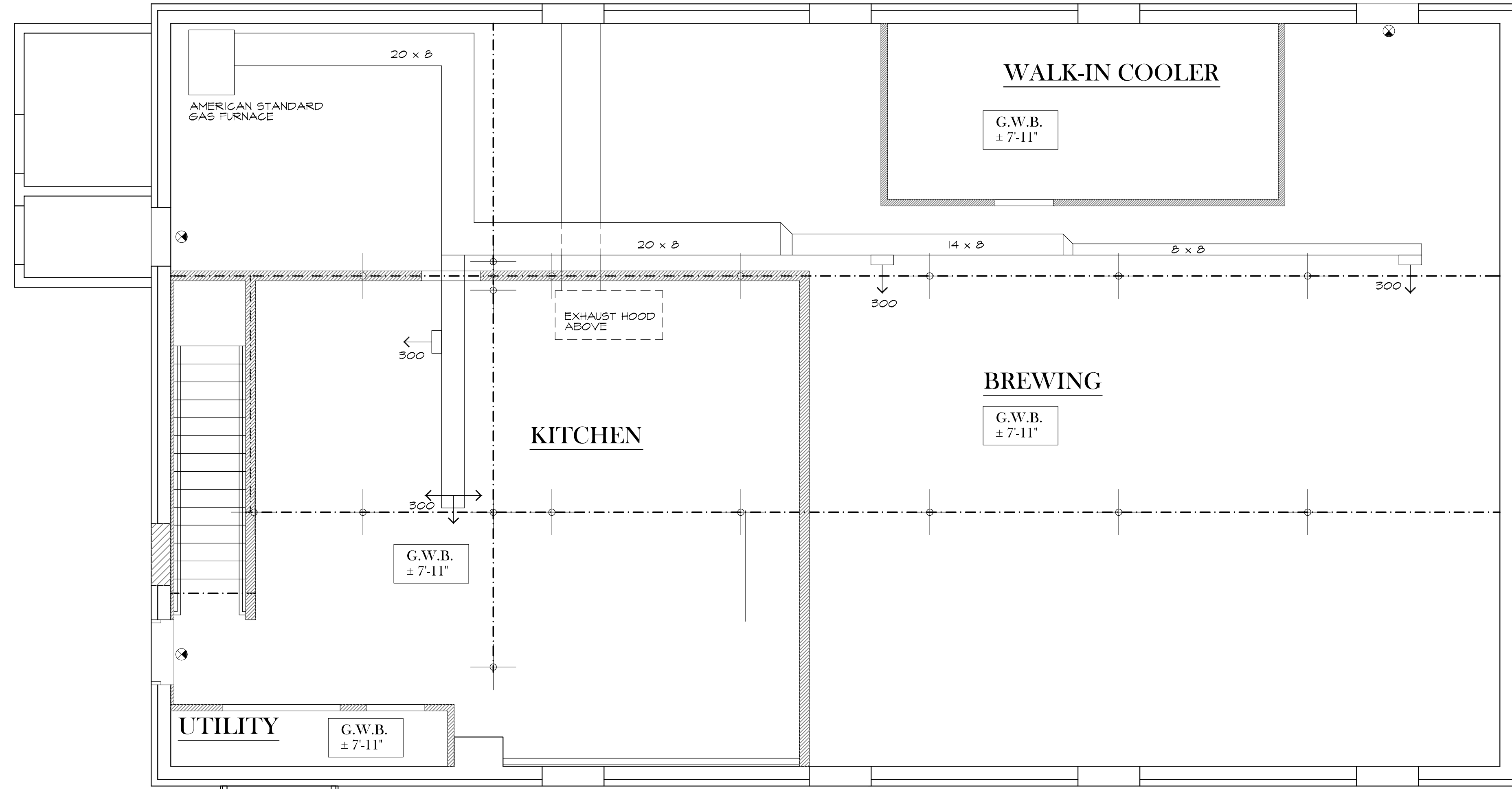
© 2019 KEMPER ASSOCIATES ARCHITECTS, LLC
 COPYRIGHT WARNING: FEDERAL COPYRIGHT PROTECTION
 EXTENDS TO ORIGINAL AND MODIFIED DERIVATIVE PLANS.
 AS APPLICABLE TO INTENTIONAL AND UNINTENTIONAL
 INFRINGEMENT, AND PROVIDES FOR SPECIFIC STATUTORY
 DAMAGES, BOTH CIVIL AND CRIMINAL. THESE
 ARCHITECTURAL WORKS ARE COPYRIGHTED AND PROTECTED
 BY TITLE 17 OF THE U.S. STATE CODE AND REPRODUCTIONS
 ARE STRICTLY PROHIBITED AND FORBIDDEN.



SYMBOL KEY:

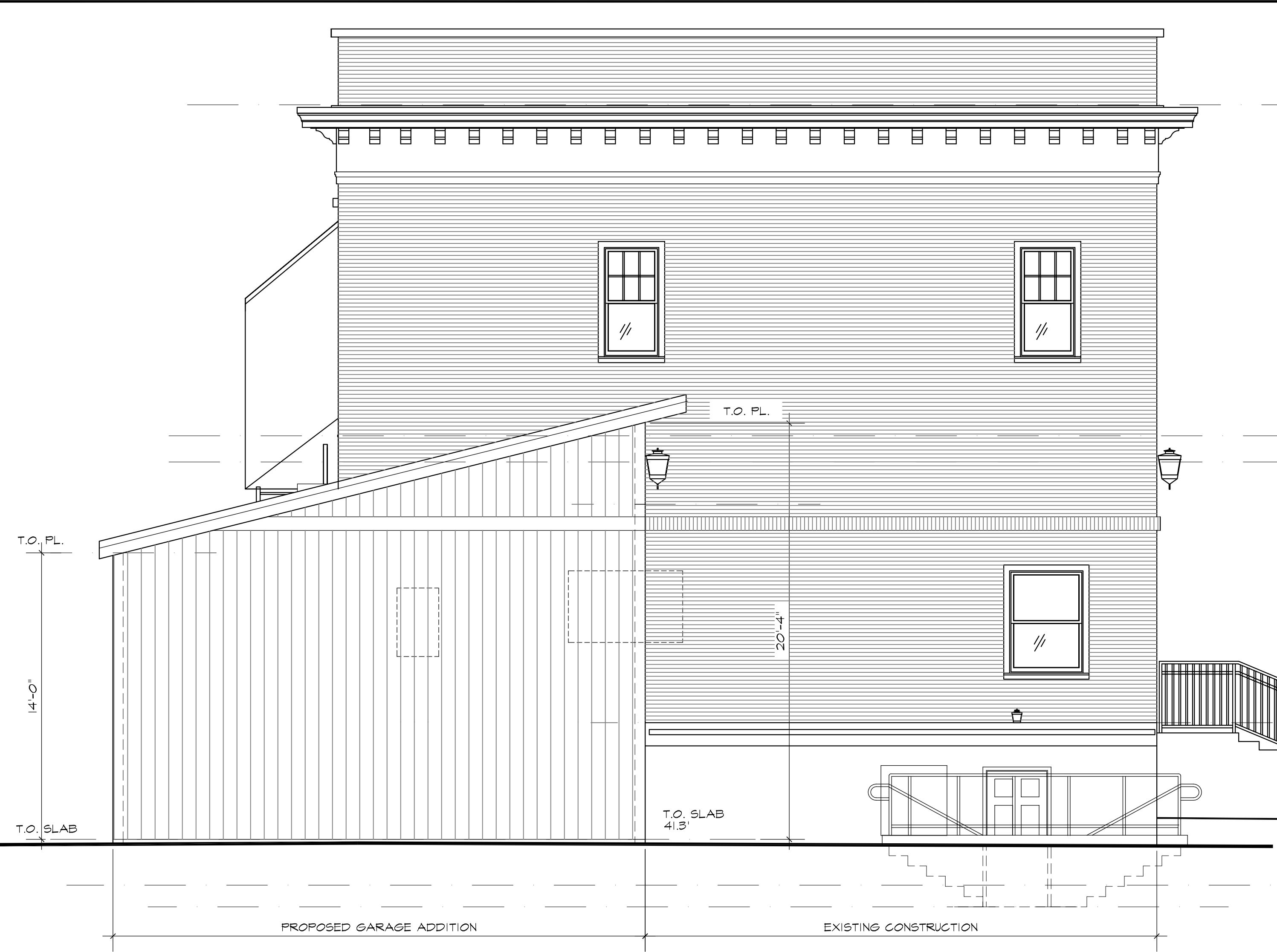
- FLOURESCENT LIGHTING FIXTURE RECESSED WITH EMERGENCY BALLAST
- ◆ COMPACT FLUORESCENT LIGHT FIXTURE
- ◆ EXTERIOR FLUORESCENT LIGHT FIXTURE
- LINEAR LED FIXTURE
- FLUORESCENT FIXTURE
- Ⓟ PENDANT LIGHTING FIXTURE
- Ⓢ SMOKE / CO DETECTOR
- Ⓡ HEAT DETECTOR
- Ⓞ OCCUPANCY SENSOR
- Ⓧ EXIT SIGN
- Ⓜ MINIHORN DEVICE
- Ⓥ VISUAL DEVICE - WALL MOUNTED
- Ⓛ EMERGENCY LIGHT BATTERY UNIT
- Ⓜ AUDIBLE VISUAL DEVICE - WALL MOUNTED
- Ⓡ RETURN GRILLE
- Ⓜ SUPPLY DIFFUSER
- Ⓡ FAN

MAIN FLOOR PLAN
REFLECTED CEILING PLAN
SCALE: 1/4" = 1'-0"

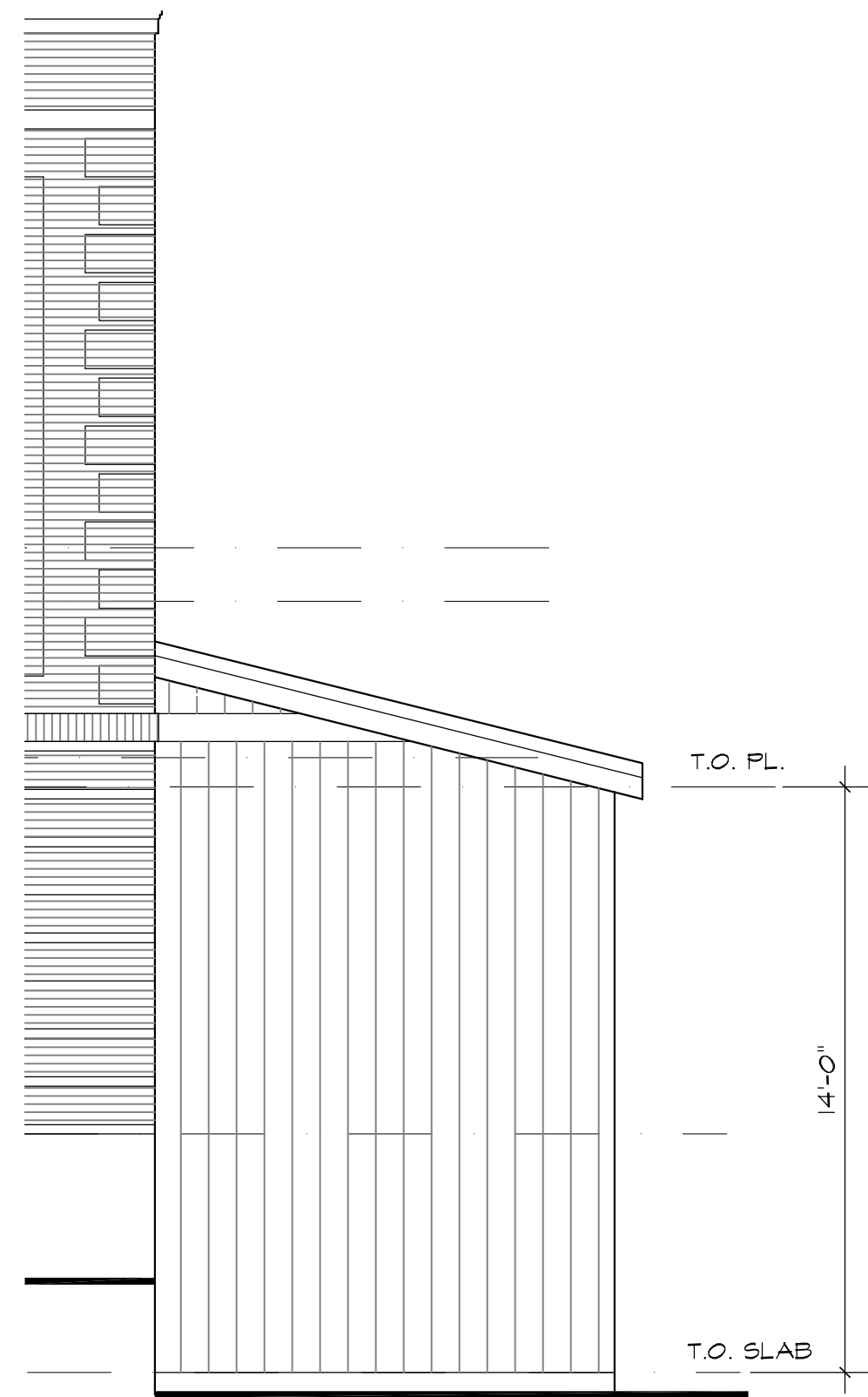


BASEMENT
REFLECTED CEILING PLAN
SCALE: 1/4" = 1'-0"

© 2019 KEMPER ASSOCIATES ARCHITECTS, LLC
COPYRIGHT WARNING: FEDERAL COPYRIGHT PROTECTION EXTENDS TO ORIGINAL AND MODIFIED DERIVATIVE PLANS, AS APPLICABLE TO INTENTIONAL AND UNINTENTIONAL INFRINGEMENT, AND PROVIDES FOR SPECIFIC STATUTORY DAMAGES, BOTH CIVIL AND CRIMINAL. THESE ARCHITECTURAL WORKS ARE COPYRIGHTED AND PROTECTED BY TITLE 17 OF THE U.S. STATE CODE AND REPRODUCTIONS ARE STRICTLY PROHIBITED AND FORBIDDEN.



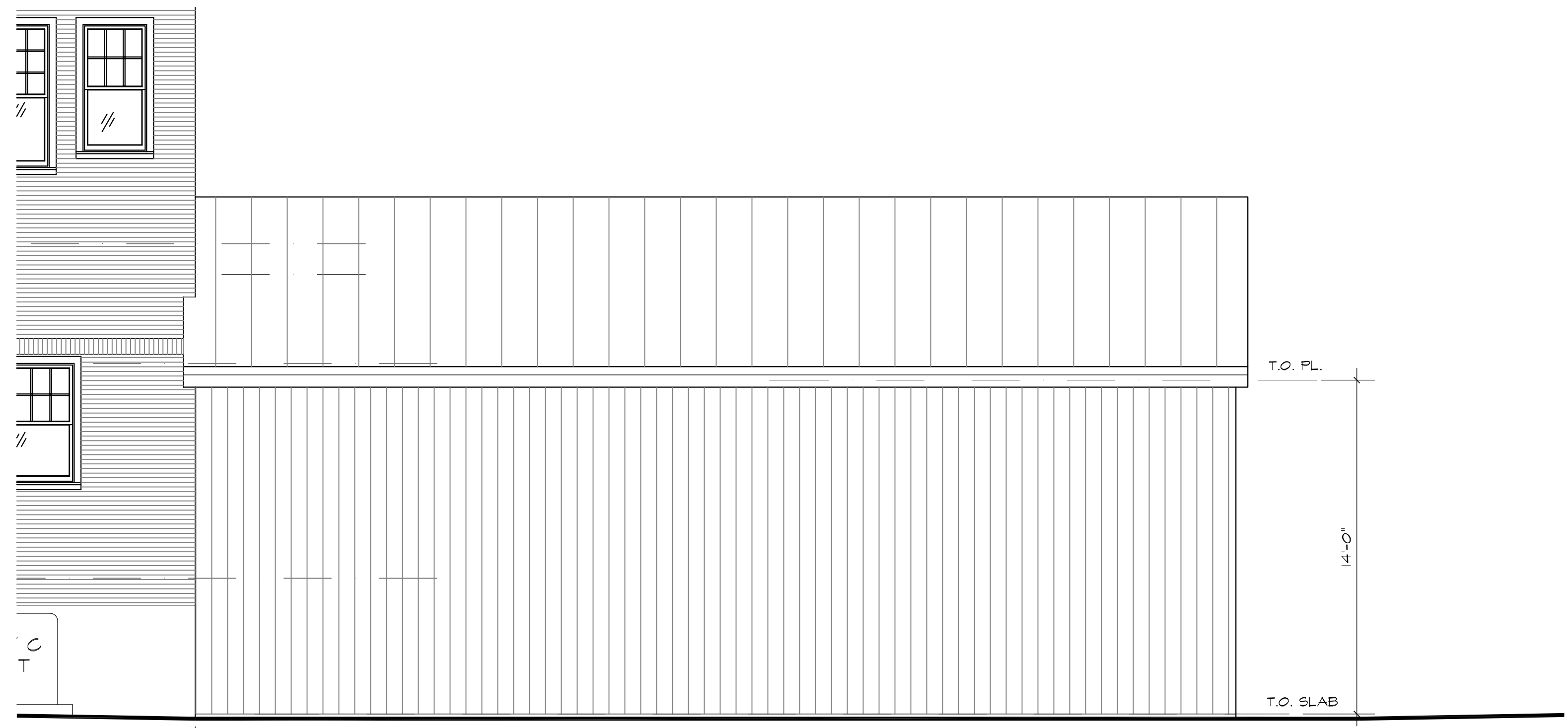
WEST ELEVATION
SCALE: 1/4" = 1'-0"



EAST ELEVATION
SCALE: 1/4" = 1'-0"



SOUTH ELEVATION
SCALE: 1/4" = 1'-0"



NORTH ELEVATION
SCALE: 1/4" = 1'-0"

© 2019 KEMPER ASSOCIATES ARCHITECTS, LLC
COPYRIGHT WARNING: FEDERAL COPYRIGHT PROTECTION
EXTENDS TO ORIGINAL AND MODIFIED DERIVATIVE PLANS,
AS APPLICABLE TO INTENTIONAL AND UNINTENTIONAL
INFRINGEMENT, AND PROVIDES FOR SPECIFIC STATUTORY
DAMAGES, BOTH CIVIL AND CRIMINAL. THESE
ARCHITECTURAL WORKS ARE COPYRIGHTED AND PROTECTED
BY TITLE 17 OF THE U.S. STATE CODE AND REPRODUCTIONS
ARE STRICTLY PROHIBITED AND FORBIDDEN.

Date
8-3-22

Revision

Kemper Associates Architects LLC
790 Farmington Avenue • Bldg. 2 • Farmington, Connecticut 06032
(860) 409 - 7155 Fax (860) 409 - 7160

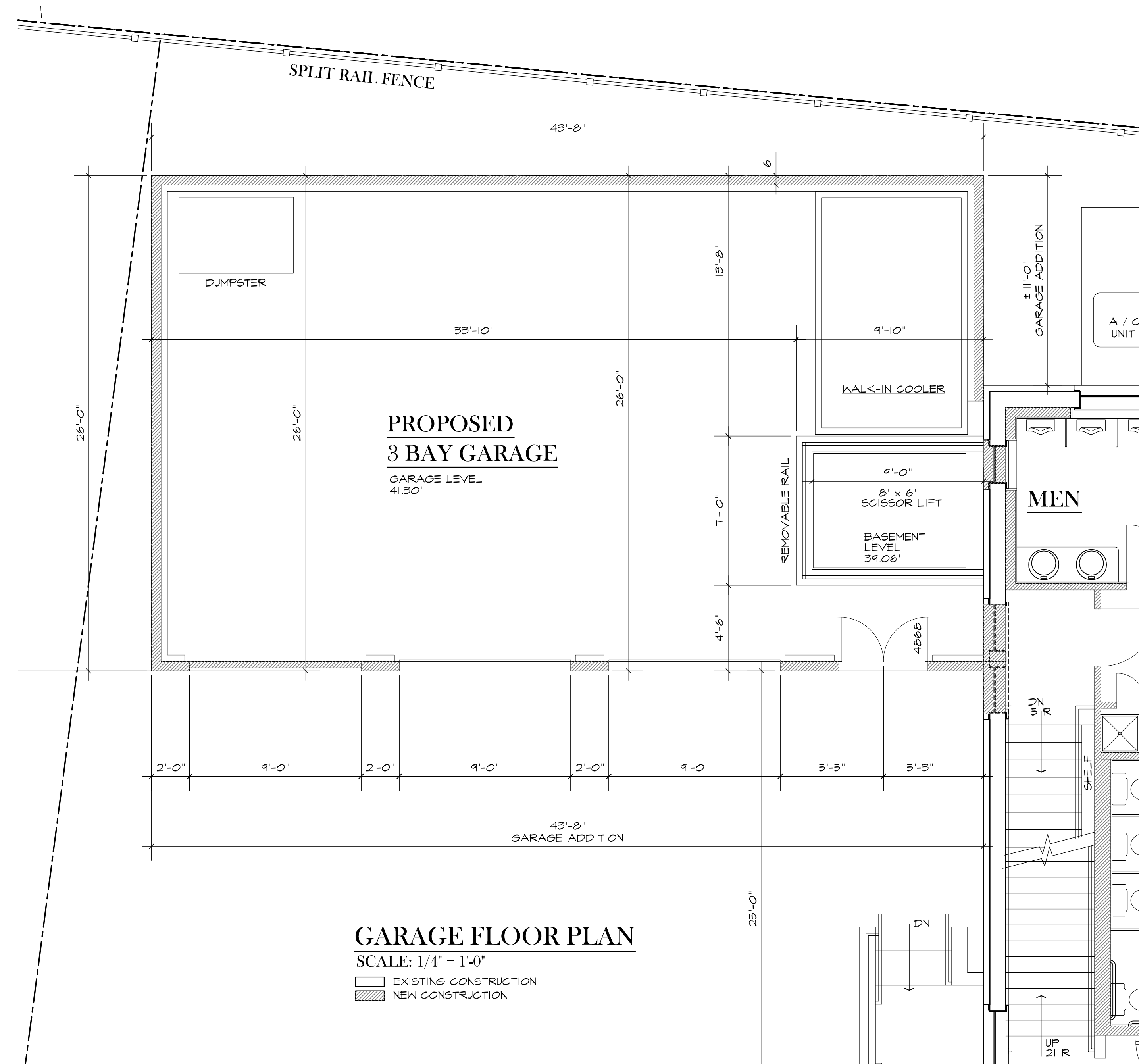
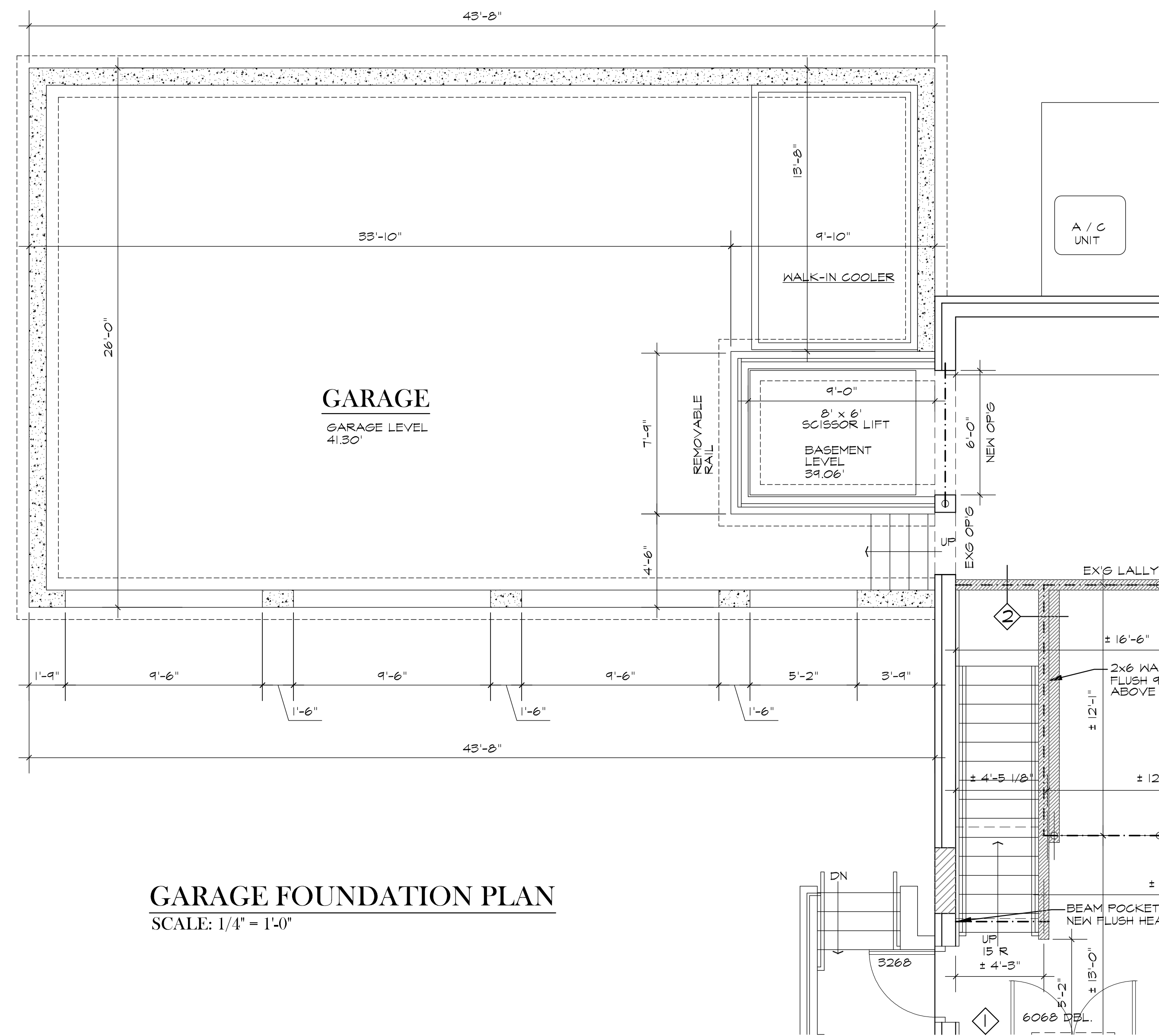
HARTFORD BREWING COMPANY, LLC
245 MAIN STREET
WETHERSFIELD, CT

GARAGE ELEVATIONS

Checked By

Sheet No.

A-7
OF 9



GARAGE FLOOR PLAN
SCALE: 1/4" = 1'-0"

LEGEND:
 [Hatched Box] EXISTING CONSTRUCTION
 [Solid Box] NEW CONSTRUCTION

Date
8-3-22

Revision

Kemper Associates Architects LLC
 790 Farmington Avenue • Bldg. 2 • Farmington, Connecticut 06032
 (860) 409 - 7155 Fax (860) 409 - 7160

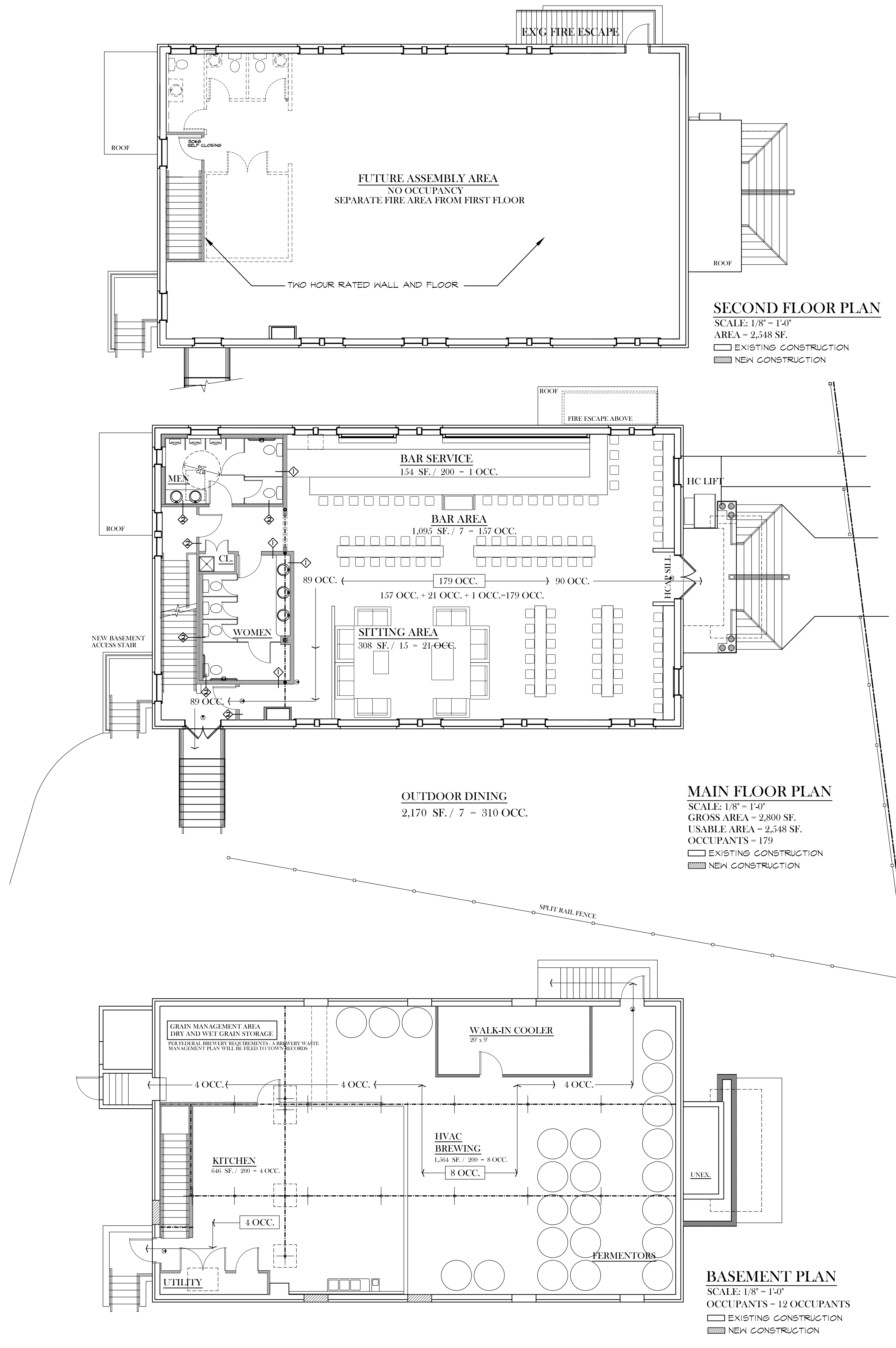
HARTFORD BREWING COMPANY, LLC
 245 MAIN STREET
 WETHERSFIELD, CT

GARAGE PLAN

Checked By

Sheet No.
A-8
 OF 3

© 2019 KEMPER ASSOCIATES ARCHITECTS, LLC
 COPYRIGHT WARNING: FEDERAL COPYRIGHT PROTECTION
 EXTENDS TO ORIGINAL AND MODIFIED DERIVATIVE PLANS.
 AS APPLICABLE TO INTENTIONAL AND UNINTENTIONAL
 INFRINGEMENT, AND PROVIDES FOR SPECIFIC STATUTORY
 DAMAGES, BOTH CIVIL AND CRIMINAL. THESE
 ARCHITECTURAL WORKS ARE COPYRIGHTED AND PROTECTED
 BY TITLE 17 OF THE U.S. STATE CODE AND REPRODUCTIONS
 ARE STRICTLY PROHIBITED AND FORBIDDEN.



BUILDING CODE

BUILDING CODE: 2015 EXISTING BUILDING CODE
CHAPTER 9-901.1 - LEVEL THREE - ALL NEW CONSTRUCTION SHALL COMPLY WITH THE REQUIREMENTS OF 2015 INTERNATIONAL BUILDING CODE
ADDITIONS - 2015 IEBC CHAPTER 11: ADDITIONS
BUILDING CODE: 2015 INTERNATIONAL BUILDING CODE - PORTION OF THE 2018 STATE BUILDING CODE
STATE OF CONNECTICUT - 2018 AMMENDMENT TO THE STATE BUILDING CODE

USE GROUP
USE GROUP CLASSIFICATION (809): TENANT SPACE A-2 ASSEMBLY

CONSTRUCTION TYPE
(TABLE 601) TYPE 3B CONSTRUCTION - EXISTING

(903.2.1) USE GROUP A - AN AUTOMATIC SPRINKLER SYSTEM REQUIRED IF:
SPRINKLERS - (NOT REQ'D) AREA LESS THAN 12,000 SF OCCUPANT LOAD LESS THAN 300 OCCUPANTS
2,800 SF FIRST FLOOR AREA - 191 OCCUPANTS - NO SPRINKLERS REQUIRED

OCCUPANCY
OCCUPANCY LOAD (PER TABLE 1004.1.1)

OCCUPANCY	AREA (SF)	MULTIPLIER	DESIGN OCCUPANT LOAD
A-2 ASSEMBLY			

INTERIOR

MAIN FLOOR	AREA (SF)	MULTIPLIER	OCCUPANTS
BAR SERVICE	154	200	1 OCCUPANTS
BAR AREA	1,095	7	157 OCCUPANTS
SITTING AREA	308	15	21 OCCUPANTS
BASEMENT			
HVAC / BREWING	1,564	200	8 OCCUPANTS
KITCHEN	646	200	4 OCCUPANTS
INTERIOR TOTAL			191 OCCUPANTS

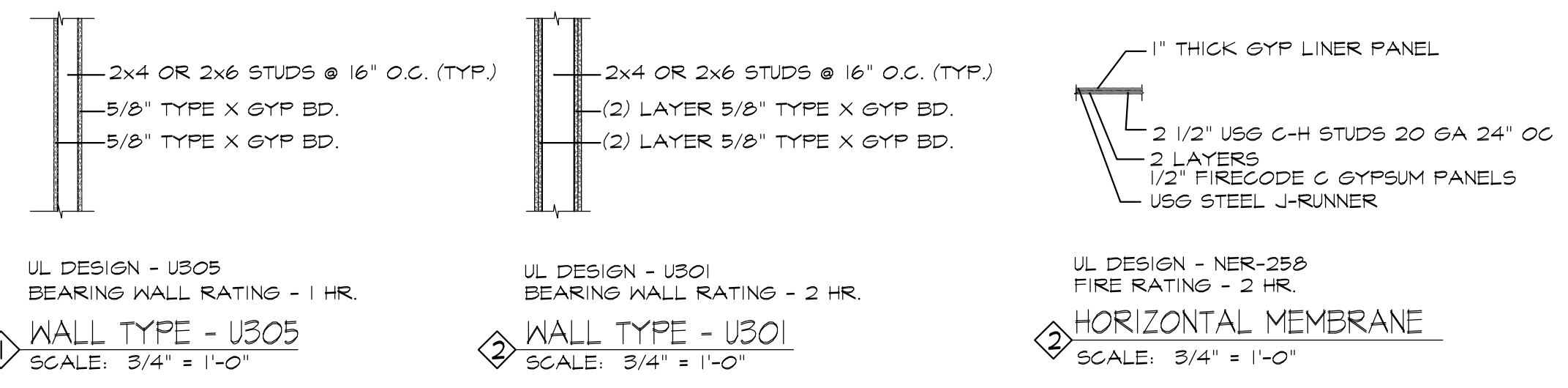
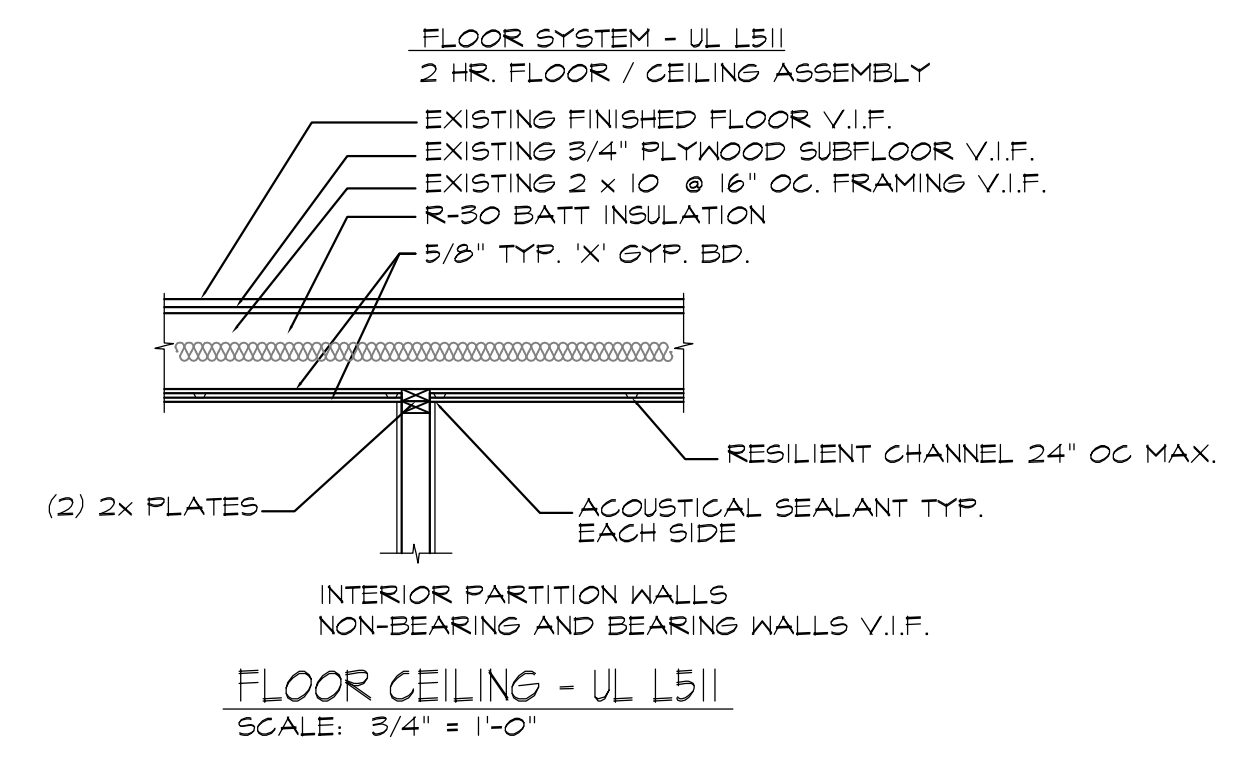
EXTERIOR

OCCUPANCY	AREA (SF)	MULTIPLIER	OCCUPANTS
OUTDOOR DINING AREA	2,170	7	310 OCCUPANTS
TOTAL			501 OCCUPANTS

PLUMBING
MINIMUM NUMBER OF REQUIRED PLUMBING FACILITIES

USE GROUP	OCCUPANTS	WATER CLOSETS		LAVATORIES		SERVICE SINKS
		MALE	FEMALE	MALE	FEMALE	
ASSEMBLY	501 (251 EA.)	1/75	1/75	1/200	1/200	1
TOTAL REQUIRED		4	4	2	2	1
TOTAL PROVIDED		5	4	2	3	1

FIRE RESISTIVE RATING
(TABLE 1020.1) CORRIDOR FIRE-RESISTIVE RATING OCCUPANCY GREATER THAN 30
1 HOUR REQUIRED WITHOUT SPRINKLER - 1 HOUR MIN. PROVIDED



WALL - FLOOR TYPES

© 2019 KEMPER ASSOCIATES ARCHITECTS, LLC
COPYRIGHT WARNING: FEDERAL COPYRIGHT PROTECTION EXTENDS TO ORIGINAL AND MODIFIED DERIVATIVE PLANS. AS APPLICABLE TO INTENTIONAL AND UNINTENTIONAL INFRINGEMENT, AND PROVIDES FOR SPECIFIC STATUTORY DAMAGES, BOTH CIVIL AND CRIMINAL. THESE ARCHITECTURAL WORKS ARE COPYRIGHTED AND PROTECTED BY TITLE 17 OF THE U.S. STATE CODE AND REPRODUCTIONS ARE STRICTLY PROHIBITED AND FORBIDDEN.