



ZORINA MONTIEL  
PH. 786.546.3080  
JOSE RAMOS AR 11115  
PH. 305.506.7388

SEAL: Digitally signed by Jose Ramos  
Date: 2021.10.14 19:33:14 -04'00'

ALL IDEAS, DESIGNS, ARRANGEMENTS, AND PLANS INDICATED OR REPRESENTED BY THIS DRAWING ARE OWNED BY AND THE PROPERTY OF RAMOS ARCHITECTS & ASSOC. AND WERE CREATED, EVOLVED AND DEVELOPED FOR USE ON AND IN CONNECTION WITH THE SPECIFIED PROJECT. NONE OF SUCH IDEAS, DESIGNS, ARRANGEMENTS OR PLANS SHALL BE USED BY OR DISCLOSED TO ANY PERSON, FIRM OR CORPORATION FOR ANY PURPOSE WHATSOEVER WITHOUT THE WRITTEN PERMISSION OF RAMOS ARCHITECTS & ASSOCIATES. WRITTEN DIMENSIONS OF THESE DRAWINGS SHALL HAVE PRECEDENCE OVER SCALED DIMENSIONS. CONTRACTORS SHALL VERIFY AND BE RESPONSIBLE FOR ALL DIMENSIONS AND CONDITIONS ON THE JOB AND THIS OFFICE MUST BE NOTIFIED OF ANY VARIATIONS FROM THE DIMENSIONS AND CONDITIONS SHOWN BY THESE DRAWINGS. SHOP DETAILS MUST BE SUBMITTED TO THIS OFFICE FOR APPROVAL BEFORE PROCEEDING WITH FABRICATION. ALL RIGHTS RESERVED © 2021

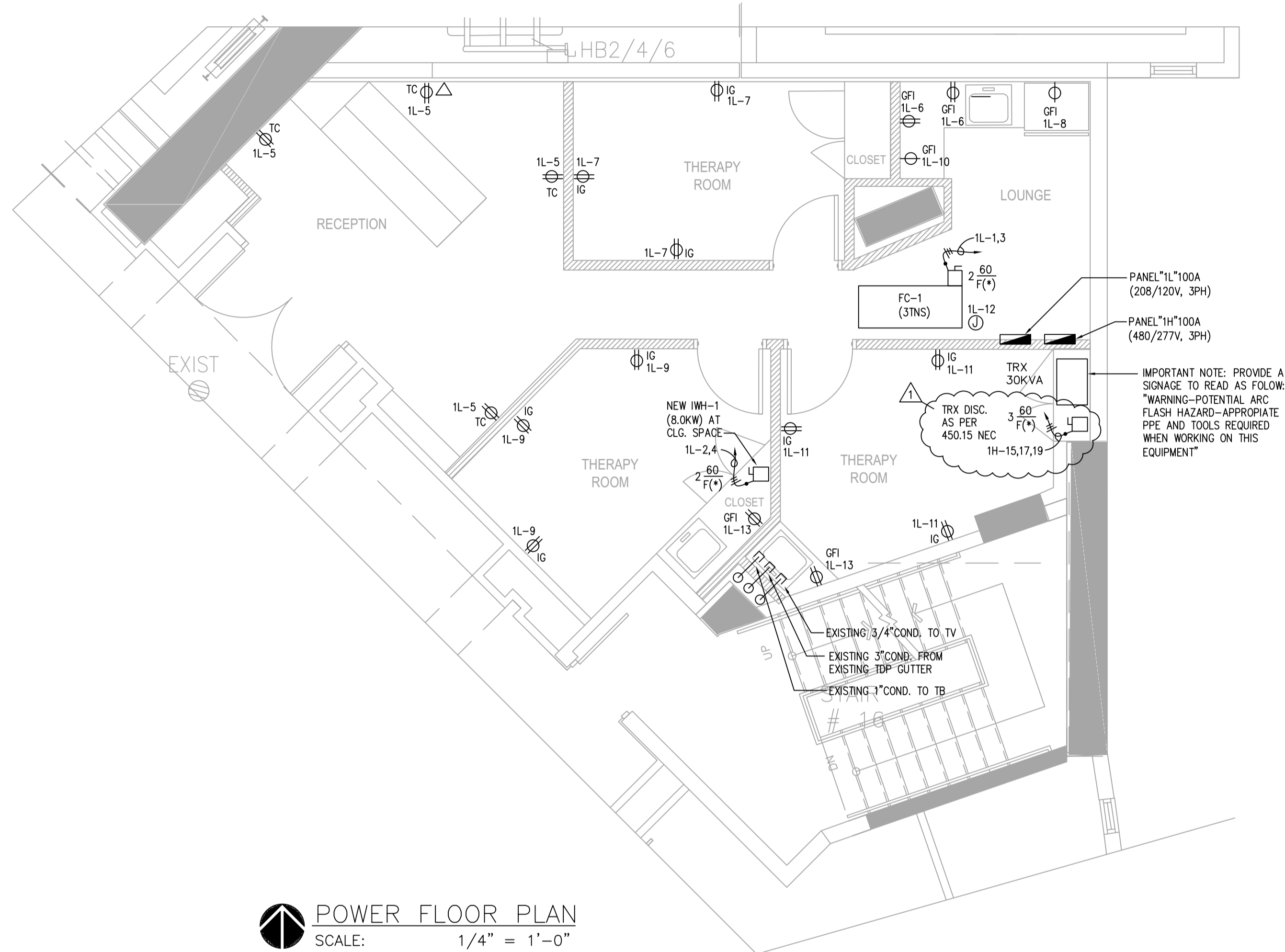
PROJECT: **QUANTUM ON THE BAY**  
UNIT 212  
**TENANT SPACE INTERIOR RENOV.**  
1900 NORTH BAYSHORE DRIVE, UNIT 212  
MIAMI, FL 33132

DATE	07/23/21
REV 1	CITY 10/14/21

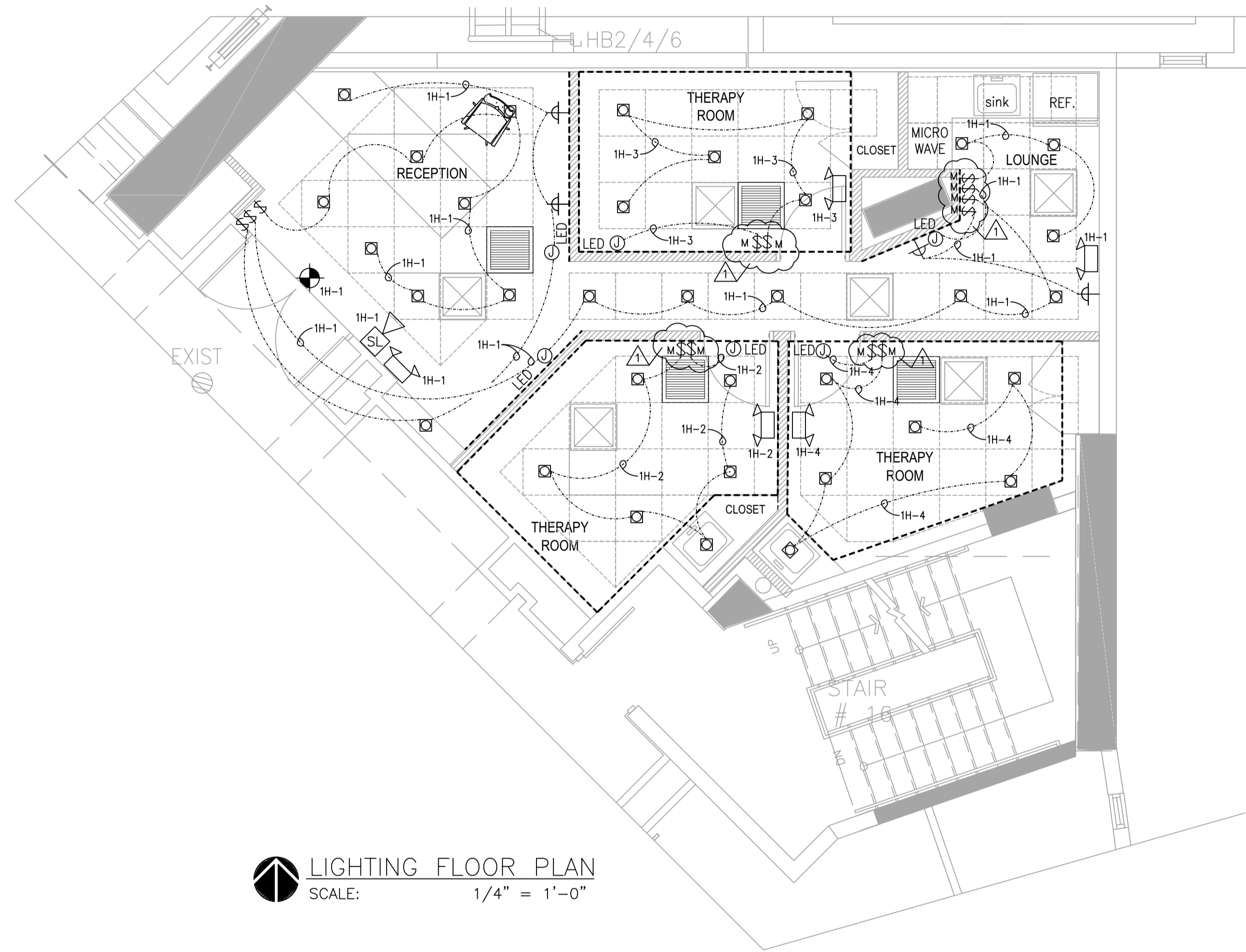
DRAWING TITLE:  
**ELECT. POWER & LIGHT PLAN**  
DRAWN BY: ZM CHECKED BY: JR  
SCALE: AS NOTED

PROJECT NUMBER  
**21189**

SHEET  
**E-101**



**POWER FLOOR PLAN**  
SCALE: 1/4" = 1'-0"



**LIGHTING FLOOR PLAN**  
SCALE: 1/4" = 1'-0"

**WIRING DEVICES**

- ⊕ DUPLEX RECEPTACLE - 125V - 20AMP - NEMA 5-20R, MOUNT 18" A.F.F. (STANDARD), 42" AFF @ COUNTERTOPS OR AS NOTED
- ⊕ DUPLEX RECEPTACLE ON GROUND FAULT INTERRUPTER CIRCUIT. 125V - 20 AMP - NEMA 5-20R
- ⊕ QUAD RECEPTACLE - 125V - 20AMP - NEMA 5-20R, MOUNT 18" A.F.F. (STANDARD), 42" AFF @ COUNTERTOPS OR AS NOTED
- ⊕ DUPLEX RECEPTACLE-125V - 20AMP - NEMA 5-20R, -CEILING MOUNTED. 15 AMP/120 VOLT
- ⊕ SPECIAL PURPOSE OUTLET, 208/240-VOLT AS INDICATED, GROUND TYPE, HORIZONTAL MOUNT
- ⊕ WALL SWITCH - 1 POLE - 125V - 20 AMP, MOUNT 46" A.F.F. 42" AFF @ COUNTERTOPS OR AS NOTED. QUIET TYPE.
- ⊕ THREE WAY WALL SWITCH
- ⊕ MOTION WALL SWITCH - LIGHT CONTROL OCCUPANCY SENSOR. AS PER SECTION C-405

IG - ISOLATED GROUNDING RECEPT.  
TC - TIMER CONTROLLER RECEPT.

**FIRE ALARM**

- ⊕ SL - STROBE LIGHT AND HORN
- ⊕ - PULL STATION

**DISTRIBUTION**

- ⊕ CEILING OR WALL MOUNTED JUNCTION BOX.
- ⊕ FAN MOTOR.

**ELECTRICAL SYMBOL LEGEND**

- ⊕ ELECTRICAL PANEL
- ⊕ ELECTRICAL METER
- ⊕ DISCONNECT SWITCH CIRCUIT BREAKER TYPE.
- BRANCH CIRCUIT OR FEEDER EXPOSED
- BRANCH CIRCUIT OR FEEDER CONCEALED IN CLG. WALL OR SLAB
- www FLEXIBLE CONDUIT - NO LONGER THAN 1.8m (6'-0").
- S SOUND SYSTEM WIRING BY OTHERS
- HOME RUN TO PANEL
- MARKS DENOTE - NUMBER OF WIRES (HOT OR SWITCH LEGS)
- LONG MARK - NEUTRAL,
- NO MARK - NEUTRAL & ONE HOT WIRE
- DARK CIRCLE SYMBOL - GREEN GROUND
- ⊕ MAGNETIC MOTOR STARTER FURNISHED BY OTHER SECTION OF SPECIFICATIONS, INSTALLED BY EC.
- ⊕ ENCLOSED CIRCUIT BREAKER . SIZE AND RATING AS INDICATED ON PLANS
- ⊕ DISCONNECT SWITCH - FUSED.
- F(1) DISCONNECTIVE FUSIBLE BY MANUFACTURER.
- W.P. WEATHERPROOF.

**COMMUNICATIONS**

- △ Data- Modular receptacles 3 circuit/5 Wire Double sided system

**LIGHTING LEGEND**

SYMBOL	VOLTS	DESCRIPTION
⊕	20 Watts	RECESSED High hat - Beach 4" beach lighting with square trim
---	15 Watts	LED LINEAR PENDANT RAZZO/ CHUTE LP14935 DIM: 8"Dx35"W 4"HT/ lamp led/ 16watt/wire length 120"/conduit dim: 12.21x5.5"Wx1-5/8"HT
⊕	20 Watts	WALL LIGHT FOR BEHIND ACRYLIC PANEL WALL
⊕	120 V	EMERGENCY LIGHT W/ BATTERY BACK-UP 90 MIN (BY OWNER)
⊕	120 V	EXIT SIGN AND WALL MTD W/ BATTERY BACK-UP 90 MIN
⊕	120 V	COMBINATION EXIT SIGN AND WALL MTD EMERGENCY LIGHTING UNIT. W/ BATTERY BACK-UP 90 MIN

**DRAWING NOTES:**

1- EXISTING SHELL RETAIL SPACE WITH EXISTING ELECTRICAL SERVICE. THE SCOPE OF WORK IN THIS CONTRACT INVOLVES:

EXISTING ELECTRICAL METER ROOM ELECTRICAL METER. THE SCOPE OF WORK IS LIMITED TO INTERIOR MODIFICATIONS AT PROPOSED AREAS THE ELECTRICAL LOAD CALCULATIONS COMPLY WITH EXISTING SPACE LOAD SERVICE. (REFER TO ELECTRICAL RISER DIAGRAMS)

- NEW ELECTRICAL PANELS FROM EXISTING ELECTRICAL METER ROOMS
- NEW ELECTRICAL PANELS WITH TRANSFORMERS
- NEW POWER AND LIGHTING LAY-OUT.
- REFER TO ELECTRICAL LOAD CALCULATIONS

**VERY IMPORTANT NOTE:**

CONTRACTOR SHALL VISIT AND INSPECT JOB SITE BEFORE PROVIDE ANY JOB BID. HE SHALL NOTIFIED ENGINEER FOR ANY DISCREPANCY BETWEEN EXISTING CONDITIONS AND PROPOSED DRAWINGS

- EXISTING EGRESS ILLUMINATION COMPLIES WITH MIN 1 FC AS PER FBC 1006, 2020.
- EXISTING PARKING ILLUMINATIONS TO COMPLY WITH SECTION 8C-3 MIAMI DADE COUNTY CODE.

**VERY IMPORTANT NOTE:**

ALL BRANCH CIRCUIT SERVICING RECEPT AND FIXED EQUIPMENT IN PATIENT CARE AREAS SHALL HAVE A REDUNDANT GROUND AS PER 517.13. RACEWAY TO BE METAL SYSTEM OR A CABLE HAVING A METALLIC ARMOR, OR SHEATH ASSEMBLY SHALL ITSELF QUALIFY AS AN EQUIPMENT GROUNDING CONDUCTOR.