

DEVELOPMENT OPPORTUNITY



GC

REALTY & DEVELOPMENT, LLC.



Major Price Drop

3 Acres For Sale SW Corner of Lake and Gary

6N632 Lake St. Roselle IL 60172

Brad Bullington-630-674-6989

GC Realty & Development LLC 219 E. Irving Pk. Rd. Roselle IL 60172

All information deemed accurate but not guaranteed.

Sale Price: \$2,100,000



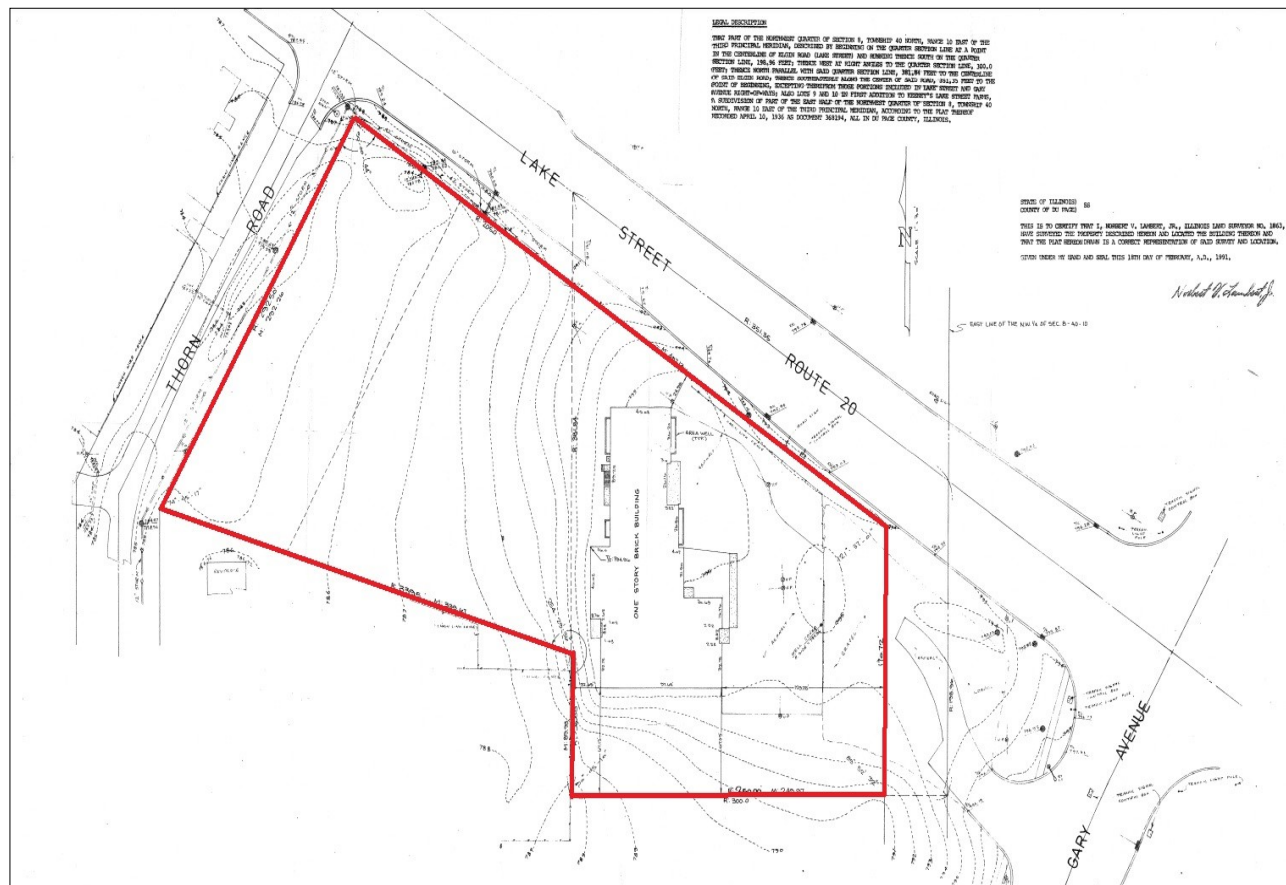
PROPERTY INFORMATION

- ◆ Size: 130,680 SF
- ◆ Traffic Ct: 75K Per Day
- ◆ Frontage: 400 FT Lake St.
- ◆ Pins: 02-08-103-008
02-08-103-002
- ◆ Taxes: \$15,238
- ◆ Zoning: B-3

Unincorporated Dupage County

PROPERTY SUMMARY

3 Acres of land for development. Ideal for car dealerships, free standing retail, or any other commercial uses within B-3 zoning. Neighboring companies include: Starbucks, Thorntons, Dunkin Donuts, Woodland Windows, Brunch Café, Rookies Sports Bar and Sammy's Mexican Restaurant.



Brad Bullington

630-674-6989

brad@gcrealtyinc.com

bradbullington.com

GC Realty & Development LLC

215 E. Irving Pk. Rd. Roselle IL 60172

Sale Price: \$2,100,000



PROPERTY INFORMATION

- ◆ **Size:** 130,680 SF
- ◆ **Pins:** 02-08-103-008
02-08-103-002
- ◆ **Taxes:** \$15,238
- ◆ **Zoning:** B-3
- ◆ **Traffic Ct:** 75K Per Day
- ◆ **Frontage:** 400 FT Lake St.

Unincorporated Dupage County

PROPERTY SUMMARY

3 Acres of land for development. Ideal for car dealerships, free standing retail, or any other commercial uses within B-3 zoning. Neighboring companies include: Starbucks, Thorntons, Dunkin Donuts, Woodland Windows, Brunch Café, Rookies Sports Bar and Sammy's Mexican Restaurant.



Brad Bullington

630-674-6989

brad@gcrealtyinc.com

bradbullington.com

GC Realty & Development LLC

219 E. Irving Pk. Rd. Roselle IL 60172