

6,855 SF Medical Office For Sale

Property Highlights

- 6,855 gross SF
- Zoned: C-O
- HOA Dues: \$2.92/SF/YR
- Built in 2003
- Parking: 5/1,000
7 covered reserved
- Medical interiors
- Restrooms with lockers
and shower

Area Amenities

- Across the street from HonorHealth Shea Medical Center
- Building signage available
- Walkable to nearby retail and restaurants
- Access is right of the North Loop 101 at Shea Blvd

Sheila Bale

Managing Director
+1 602 224 4454
sheila.bale@cushwake.com

Drew Sampson

Director
+1 602 820 3877
drew.sampson@cushwake.com

Erika Eckblad

Senior Associate
+1 602 224 4451
erika.eckblad@cushwake.com

2555 E Camelback Rd., Suite 400
Phoenix, AZ 85016
main +1 602 954 9000
fax +1 602 253 0528
cushmanwakefield.com



IRONWOOD OFFICE SUITES

10245 NORTH 92ND STREET
SCOTTSDALE | AZ 85260

Property Highlights

Year Built: 2003
Size: 6,855 SF
Cross Streets: Shea and 92nd Street
Property Taxes: \$14,074.22/year



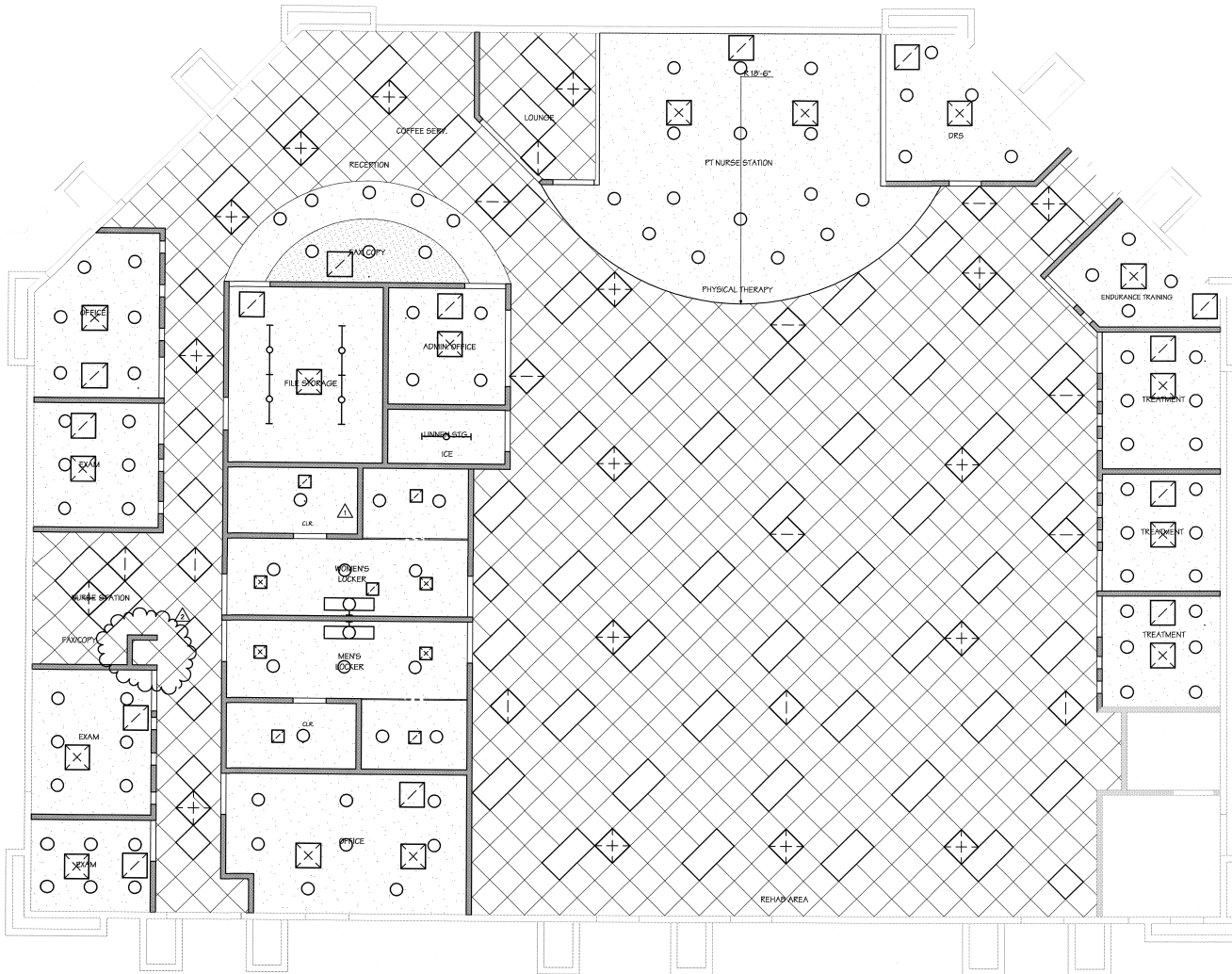
Sheila Bale
Managing Director
+1 602 224 4454
sheila.bale@cushwake.com

Drew Sampson
Managing Director
+1 602 820 3877
drew.sampson@cushwake.com

Erika Eckblad
Senior Associate
+1 602 224 4451
erika.eckblad@cushwake.com

2555 E Camelback Rd., Suite 400
Phoenix, AZ 85016
main +1 602 954 9000
fax +1 602 253 0528
cushmanwakefield.com

Floor Plan



Sheila Bale
Managing Director
+1 602 224 4454
sheila.bale@cushwake.com

Drew Sampson
Managing Director
+1 602 820 3877
drew.sampson@cushwake.com

Erika Eckblad
Senior Associate
+1 602 224 4451
erika.eckblad@cushwake.com

2555 E Camelback Rd., Suite 400
Phoenix, AZ 85016
main +1 602 954 9000
fax +1 602 253 0528
cushmanwakefield.com



IRONWOOD OFFICE SUITES

10245 NORTH 92ND STREET
SCOTTSDALE | AZ 85260

Property Photos



[CLICK TO VIEW VIRTUAL TOUR](#)

Sheila Bale
Managing Director
+1 602 224 4454
sheila.bale@cushwake.com

Drew Sampson
Managing Director
+1 602 820 3877
drew.sampson@cushwake.com

Erika Eckblad
Senior Associate
+1 602 224 4451
erika.eckblad@cushwake.com

2555 E Camelback Rd., Suite 400
Phoenix, AZ 85016
main +1 602 954 9000
fax +1 602 253 0528
cushmanwakefield.com