



1540 6th Street

Santa Monica, California 90401

Property Highlights

- Downtown Santa Monica
- Close proximity to 3rd Street Promenade
- Potential for prominent signage
- Within walking distance of many restaurants and other amenities
- Excellent demographics
- Ample covered parking for employees
- Easy access to the Santa Monica (10) Freeway

Suite 120 Description

One window office, one interior office, reception/waiting area, large open area

OFFERING SUMMARY

Lease Rate:	\$3.50 SF/MO. (MG)
Available SF:	1,226 SF
Parking:	4 spaces @ \$175/space/mo.

DEMOGRAPHICS

	1 MILE	3 MILES	5 MILES
Total Households	20,535	92,173	205,175
Total Population	36,299	184,414	443,532
Average HH Income	\$146,141	\$171,241	\$166,243



Joseph Gabbaian

Executive Vice President | 310.806.6134
jgabbaian@naicapital.com | CalDRE #01016301



FOR LEASE



FITNESS/OFFICE/MEDICAL



1,226 SF

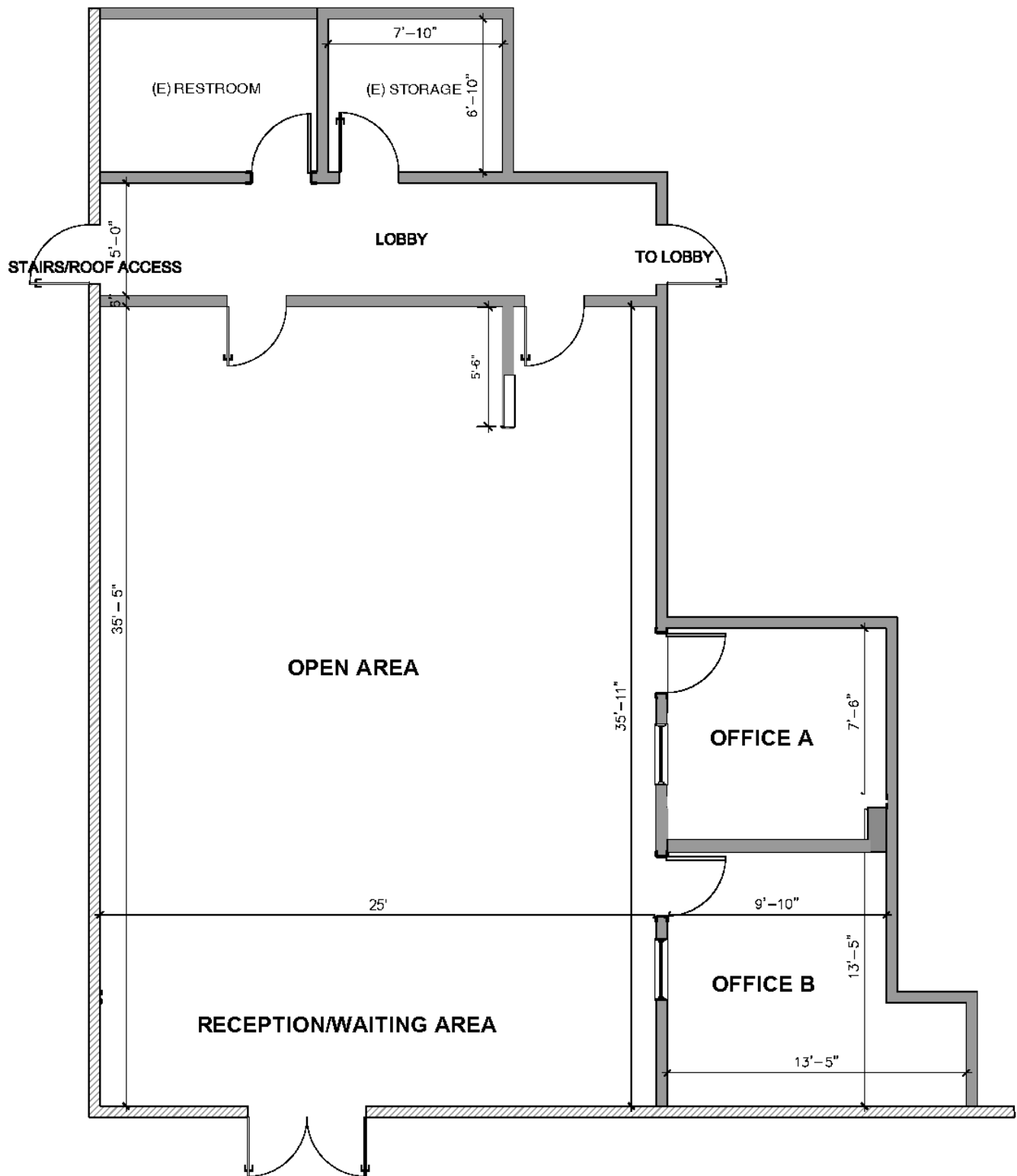


Joseph Gabbaian
Executive Vice President | 310.806.6134
jgabbaian@naicapital.com | CalDRE #01016301



www.naicapital.com

NO WARRANTY, EXPRESS OR IMPLIED, IS MADE AS TO THE ACCURACY OF THE INFORMATION CONTAINED HEREIN. THIS INFORMATION IS SUBMITTED SUBJECT TO ERRORS, OMISSIONS, CHANGE OF PRICE, RENTAL OR OTHER CONDITIONS, WITHDRAWAL WITHOUT NOTICE, AND IS SUBJECT TO ANY SPECIAL LISTING CONDITIONS IMPOSED BY OUR PRINCIPALS. COOPERATING BROKERS, BUYERS, TENANTS AND OTHER PARTIES WHO RECEIVE THIS DOCUMENT SHOULD NOT RELY ON IT, BUT SHOULD USE IT AS A STARTING POINT OF ANALYSIS, AND SHOULD INDEPENDENTLY CONFIRM THE ACCURACY OF THE INFORMATION CONTAINED HEREIN THROUGH A DUE DILIGENCE REVIEW OF THE BOOKS, RECORDS, FILES AND DOCUMENTS THAT CONSTITUTE RELIABLE SOURCES OF THE INFORMATION DESCRIBED HEREIN. LOGOS ARE FOR IDENTIFICATION PURPOSES ONLY AND MAY BE TRADEMARKS OF THEIR RESPECTIVE COMPANIES. NAI CAPITAL COMMERCIAL, INC. CAL DRE LIC. #02130474



Joseph Gabbaian

Executive Vice President | 310.806.6134

jgabbaian@naicapital.com | CalDRE #01016301





FOR LEASE



FITNESS/OFFICE/MEDICAL



1,226 SF



Joseph Gabbaian

Executive Vice President | 310.806.6134

jgabbaian@naicapital.com | CalDRE #01016301



www.naicapital.com

NO WARRANTY, EXPRESS OR IMPLIED, IS MADE AS TO THE ACCURACY OF THE INFORMATION CONTAINED HEREIN. THIS INFORMATION IS SUBMITTED SUBJECT TO ERRORS, OMISSIONS, CHANGE OF PRICE, RENTAL OR OTHER CONDITIONS. WITHDRAWAL WITHOUT NOTICE, AND IS SUBJECT TO ANY SPECIAL LISTING CONDITIONS IMPOSED BY OUR PRINCIPALS. COOPERATING BROKERS, BUYERS, TENANTS AND OTHER PARTIES WHO RECEIVE THIS DOCUMENT SHOULD NOT RELY ON IT, BUT SHOULD USE IT AS A STARTING POINT OF ANALYSIS, AND SHOULD INDEPENDENTLY CONFIRM THE ACCURACY OF THE INFORMATION CONTAINED HEREIN THROUGH A DUE DILIGENCE REVIEW OF THE BOOKS, RECORDS, FILES AND DOCUMENTS THAT CONSTITUTE RELIABLE SOURCES OF THE INFORMATION DESCRIBED HEREIN. LOGOS ARE FOR IDENTIFICATION PURPOSES ONLY AND MAY BE TRADEMARKS OF THEIR RESPECTIVE COMPANIES. NAI CAPITAL COMMERCIAL, INC. CAL DRE LIC. #02130474