

CAMELBACK TOWER

6900 E Camelback Road
Scottsdale, Arizona

FOR LEASE

Class A Office Space

Located in the Heart of
Old Town Scottsdale



CAMELBACK TOWER

6900 E Camelback Road | Scottsdale, AZ



Located in the HEART
of Old Town Scottsdale

AVAILABILITY

Suite 210: 1,039 SF

Suite 604: ±2,156 RSF

Suite 820: ±1,033 RSF

Suite 860: ±2,155 RSF

Suite 906: ±669 RSF

Rental Rate: \$48.00 Full Service



143,537
SQUARE FEET



11
STORIES



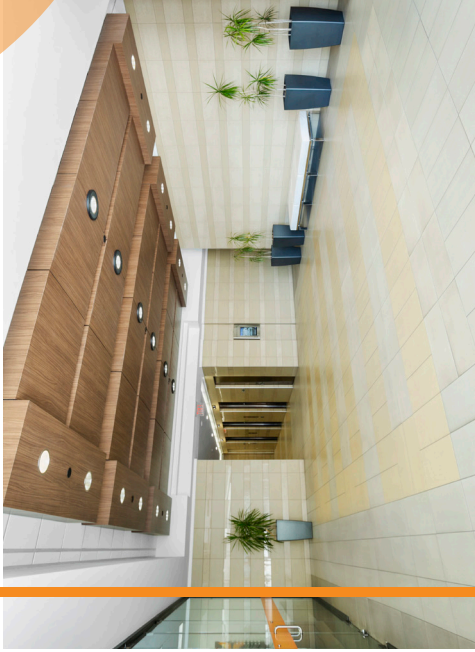
CLASS A
OFFICE BUILDING



5:1000 SF
OFFICE BUILDING
with underground parking

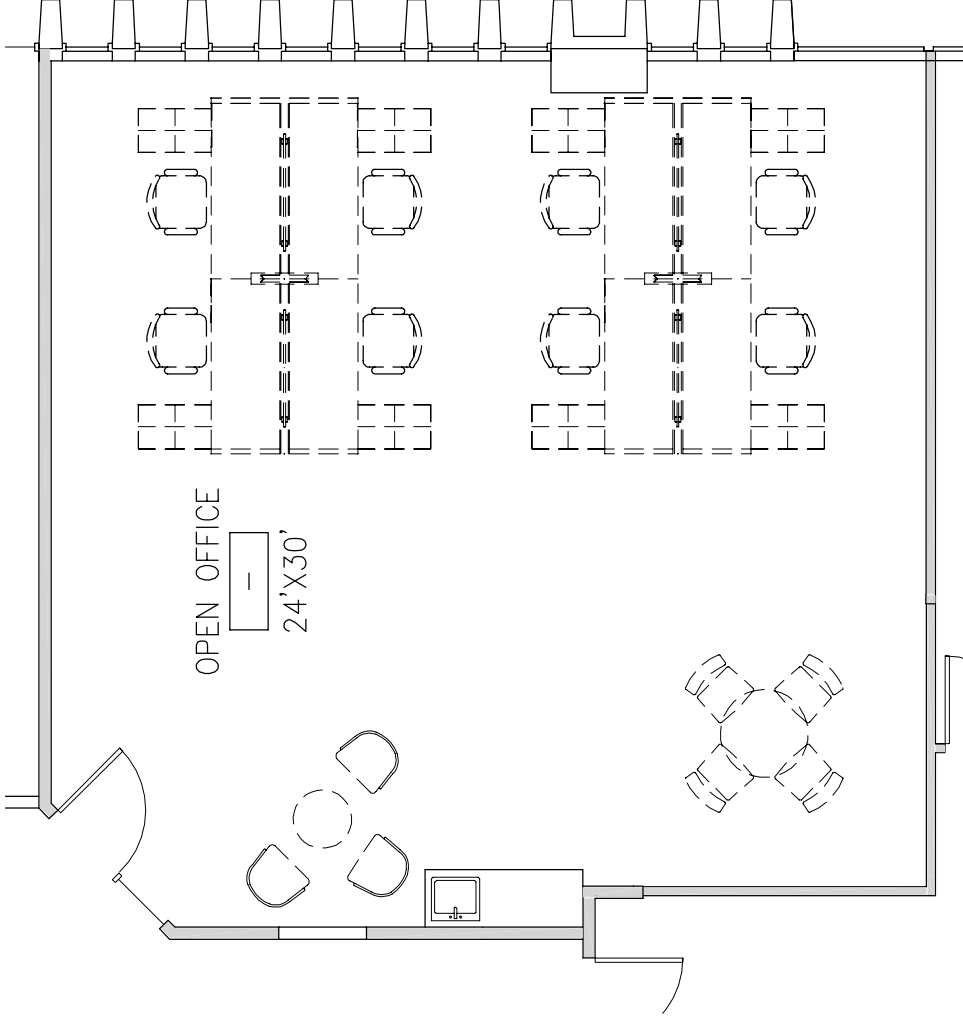


AMPLE
VISITOR PARKING



CAMELBACK TOWER

6900 E Camelback Road | Scottsdale, Arizona



Suite 210: 1,039 SF

Rental Rate: \$48.00 FS

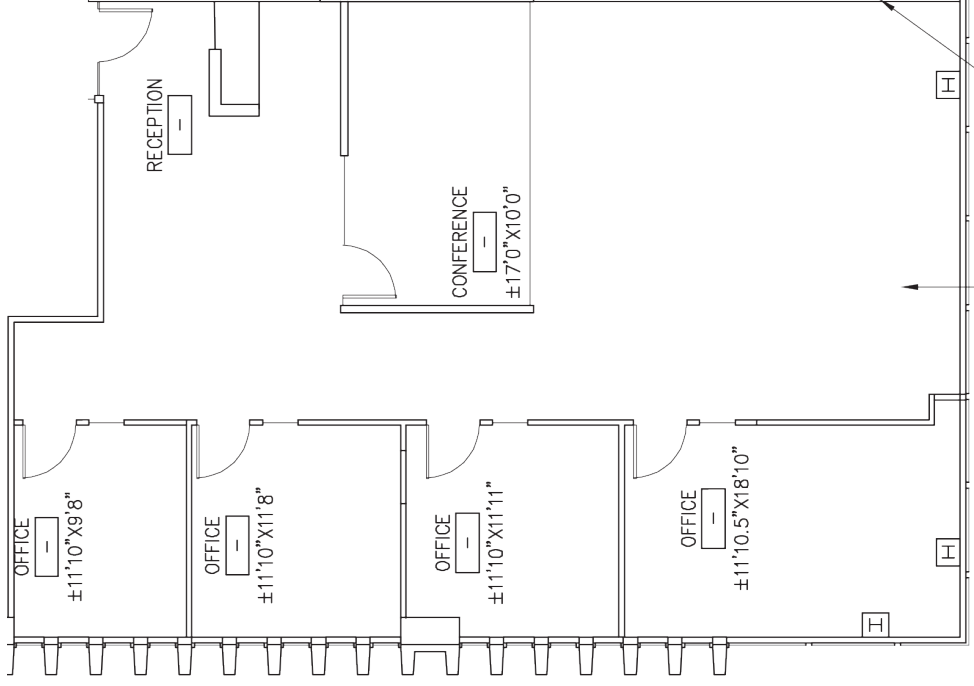
KATHLEEN MORGAN
Managing Director
602.809.1048
kathleen.morgan@transwestern.com

KEVIN SMIGIEL
Vice President
602.550.9295
kevin.smigiel@transwestern.com

VINCE FEMIANO
Managing Director
602.791.3310
vince.femiano@transwestern.com

ANDREW OLIVET
Associate
602.370.2685
andrew.olivet@transwestern.com

Suite 604: ±2,156 RSF
Rental Rate: \$48.00 FS



KATHLEEN MORGAN
Managing Director
602.809.1048
kathleen.morgan@transwestern.com

KEVIN SMIGIEL
Vice President
602.550.9295
kevin.smigiel@transwestern.com

VINCE FEMIANO
Managing Director
602.791.3310
vince.femiano@transwestern.com

ANDREW OLIVET
Associate
602.370.2685
andrew.olivet@transwestern.com

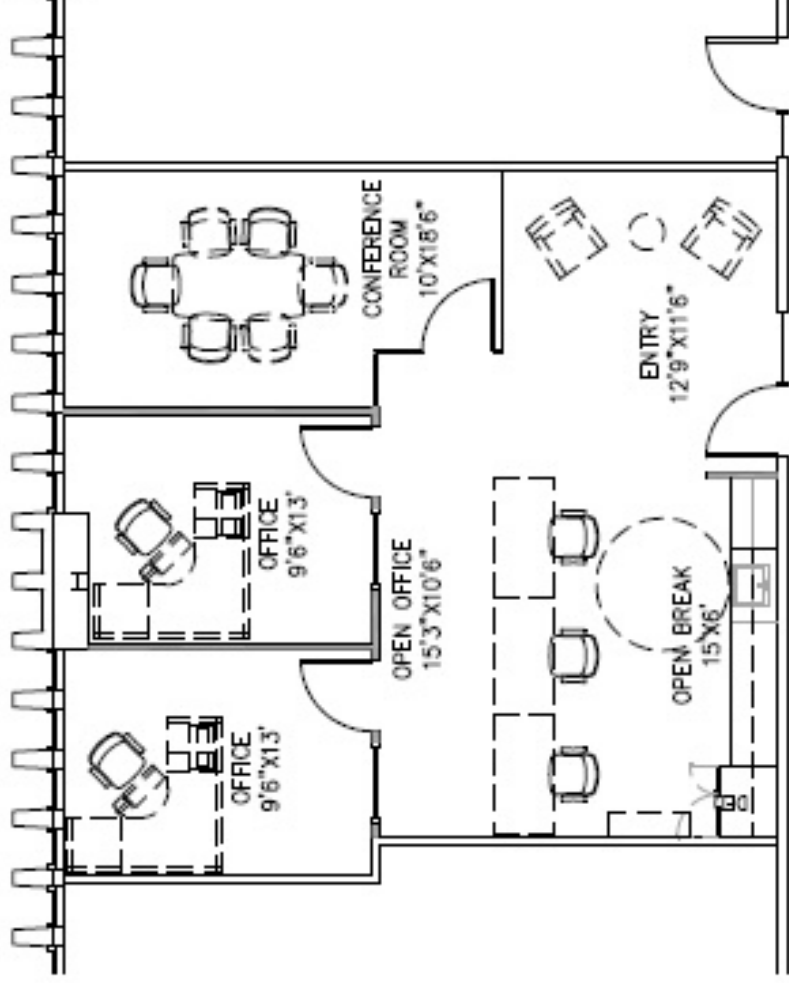
CAMELBACK TOWER

6900 E Camelback Road | Scottsdale, Arizona



Suite 820: ±1,033 RSF

Rental Rate: \$48.00 FS



KATHLEEN MORGAN
Managing Director
602.809.1048
kathleen.morgan@transwestern.com

KEVIN SMIGIEL
Vice President
602.550.9295
kevin.smigiel@transwestern.com

VINCE FEMIANO
Managing Director
602.791.3310
vince.femiano@transwestern.com

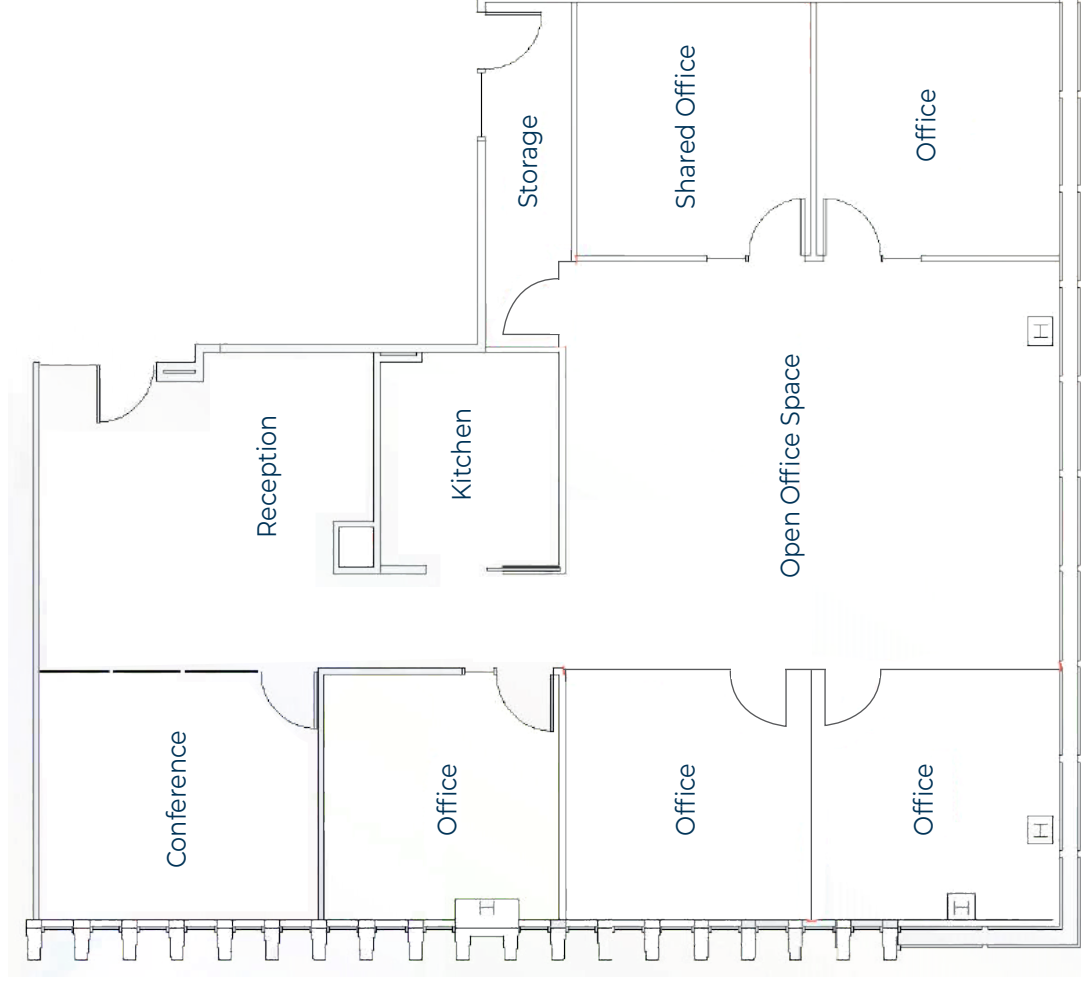
ANDREW OLIVET
Associate
602.370.2685
andrew.olivet@transwestern.com

CAMELBACK TOWER

6900 E Camelback Road | Scottsdale, Arizona



Suite 860: ±2,155 RSF
Rental Rate: \$48.00 FS



KATHLEEN MORGAN
Managing Director
602.809.1048
kathleen.morgan@transwestern.com

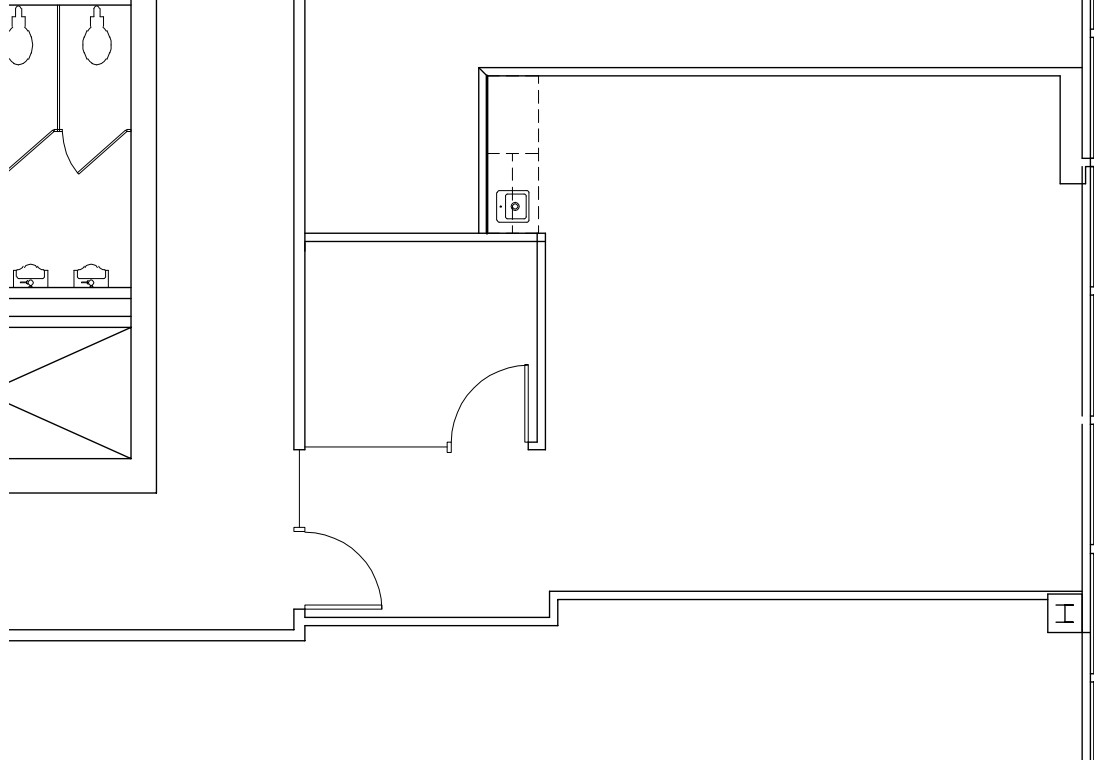
KEVIN SMIGIEL
Vice President
602.550.9295
kevin.smigiel@transwestern.com

VINCE FEMIANO
Managing Director
602.791.3310
vince.femiano@transwestern.com

ANDREW OLIVET
Associate
602.370.2685
andrew.olivet@transwestern.com

CAMELBACK TOWER

6900 E Camelback Road | Scottsdale, Arizona



Suite 906: ±669 RSF

Rental Rate: \$48.00 FS

KATHLEEN MORGAN
Managing Director
602.809.1048
kathleen.morgan@transwestern.com

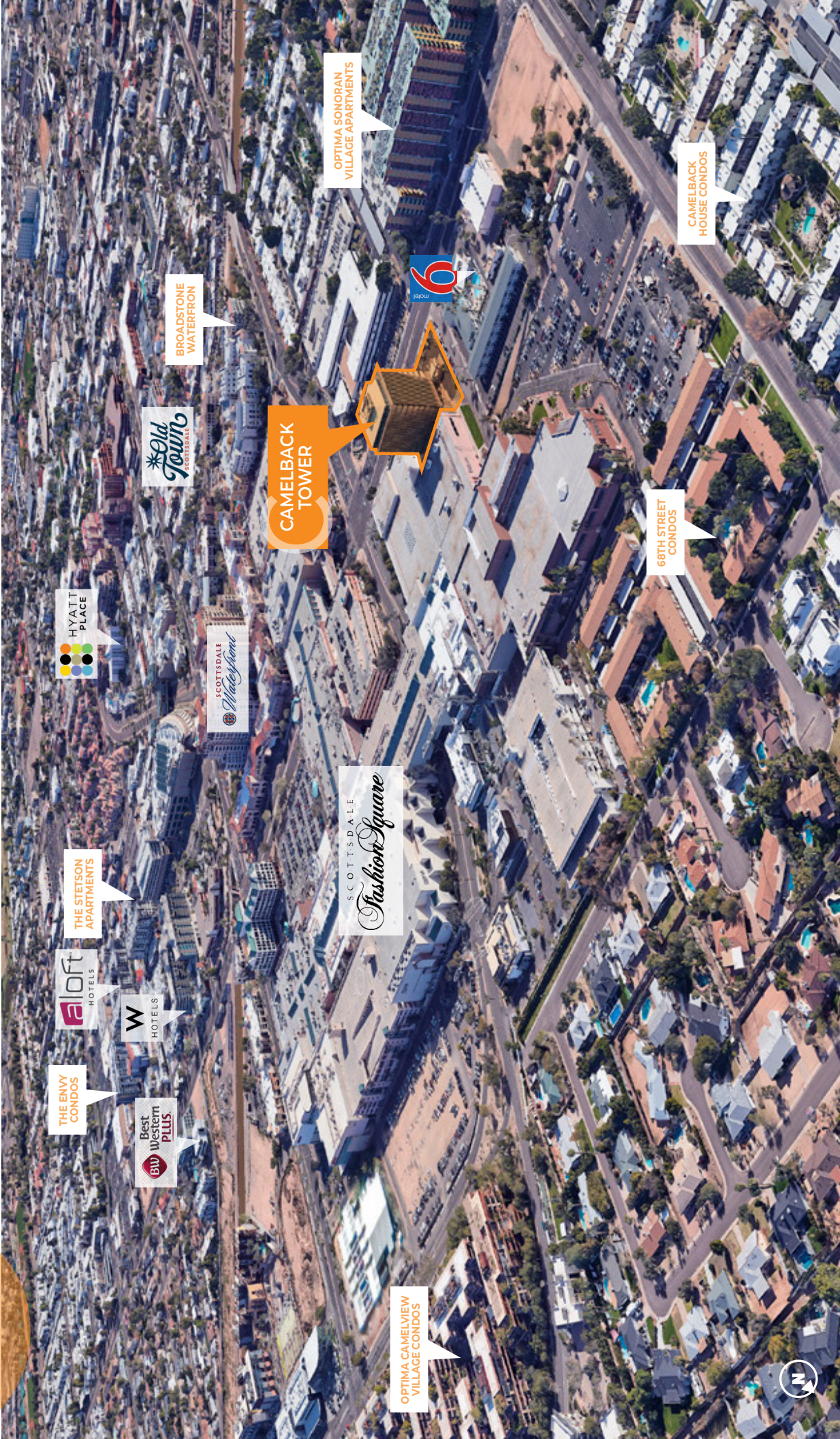
KEVIN SMIGIEL
Vice President
602.550.9295
kevin.smigiel@transwestern.com

VINCE FEMIANO
Managing Director
602.791.3310
vince.femiano@transwestern.com

ANDREW OLIVET
Associate
602.370.2685
andrew.olivet@transwestern.com

CAMELBACK TOWER

6900 E Camelback Road | Scottsdale, Arizona



HYATT PLACE

THE STETSON APARTMENTS

aloft HOTELS

W HOTELS

Best western PLUS

THE ENVY CONDOS

Old Town SCOTTSDALE

SCOTTSDALE Macy's

BROADSTONE WATERFRONT

CAMELBACK TOWER

SCOTTSDALE Fashion Square

OPTIMA SONORAN VILLAGE APARTMENTS

OPTIMA CAMELVIEW VILLAGE CONDOS

68TH STREET CONDOS

CAMELBACK HOUSE CONDOS



CAMELBACK TOWER

6900 E Camelback Road | Scottsdale, Arizona



KATHLEEN MORGAN

Managing Director
602.809.1048
kathleen.morgan@transwestern.com

KEVIN SMIGIEL

Vice President
602.550.9295
kevin.smigiel@transwestern.com

VINCE FEMIANO

Managing Director
602.791.3310
vince.femiano@transwestern.com

ANDREW OLIVET

Associate
602.370.2685
andrew.olivet@transwestern.com

The information provided herein was obtained from sources believed reliable; however, Transwestern makes no guarantees, warranties or representations as to the completeness of accuracy thereof. The presentation of this property is submitted subject to errors, omissions, change of price or conditions, prior to sale or lease, or withdrawal without notice. Copyright © 2026 Transwestern.