

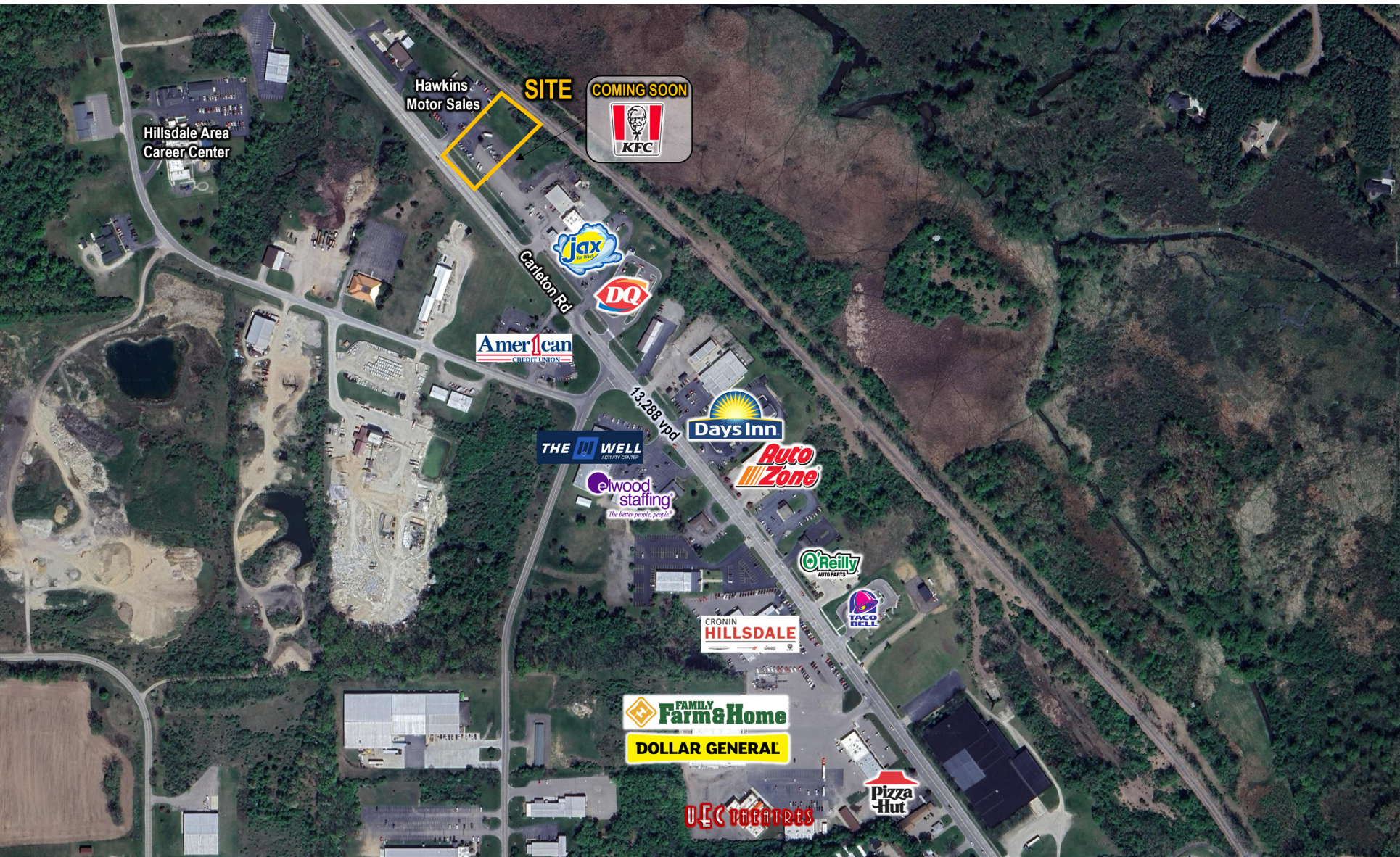
0.7 ACRE PARCEL

3341 W. Carleton Road / Hillsdale, MI



MID-AMERICA®
Real Estate-Michigan, Inc.

FOR SALE



RETAIL OPPORTUNITY

0.7 ACRE PARCEL

Address

3341 W. Carleton Road
Hillsdale, MI 49242

Availability

0.7 Acres

Area Tenants

meijer



Features

We are offering a high-visibility, 0.7-acre commercial parcel located directly on M-99, one of Hillsdale's busiest corridors. Situated just minutes from downtown Hillsdale and surrounded by established businesses, such as Meijer, Aldi, Jax Car Wash, Dairy Queen, and KFC which is under construction, this property offers an ideal location for a wide range of commercial or retail uses.

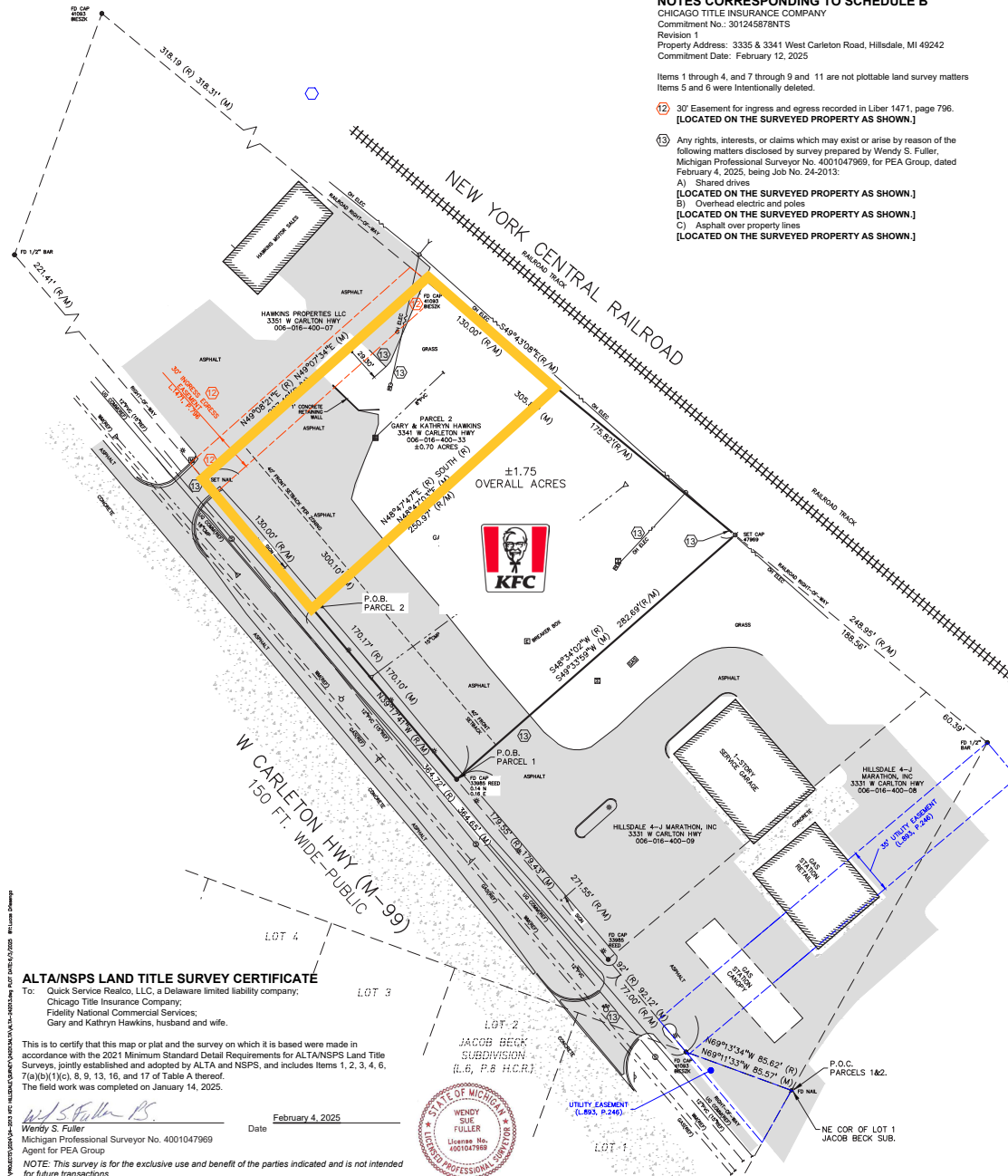
The site is located just 2 miles north of Hillsdale College which has an enrollment of just under 2,000 students. With easy access to US-12 and downtown, the site benefits from excellent traffic exposure and accessibility.

Demographics (2025)

	1 MILE	3 MILES	5 MILES
POPULATION	370	11,750	15,890
HOUSEHOLDS	146	4,535	6,193
AVG HOUSEHOLD INCOME	\$66,350	\$65,144	\$71,167
DAYTIME POPULATION	2,242	15,672	18,782



0.7 ACRE PARCEL



0.7 ACRE PARCEL



0.7 ACRE PARCEL

Eric
Birnholtz

Mid-America Real Estate -
Michigan, Inc.

T: 248.855.6800

EBirnholtz@MidAmericaGrp.com

Jake
Lievois

Mid-America Real Estate -
Michigan, Inc.

T: 248.855.6800

JLievois@MidAmericaGrp.com



MID-AMERICA®
Real Estate-Michigan, Inc.

38500 Woodward Ave, Suite 100
Bloomfield Hills, Michigan 48304
248.855.6800

MidAmericaGrp.com



CONTACT