

1264 Market Cir

1264 Market Cir, Port Charlotte, FL 33953

Presented by
MonarchDIRECT



Price: \$17.00 /SF/YR

Prime commercial/industrial property located in the heart of Port Charlotte's business district. This flexible space totals 7,500 square feet and can be leased as a whole or subdivided into three units: two 3,000 sq. ft. sections and one 1,500 sq. ft. section. Each space includes office/reception areas up front and warehouse/storage areas in the rear with bay door access for easy loading and unloading.

1264 Market Cir

1264 Market Cir, Port Charlotte, FL 33953



Great location facing 776
Newly remodeled

Mike Bladorn

mikebladorn@gmail.com

(941) 627-0014

MonarchDIRECT

1264 Market Cir
Port Charlotte, FL 33953

1264 Market Cir

1264 Market Cir, Port Charlotte, FL 33953

1264 Market Cir

1264 Market Cir, Port Charlotte, FL 33953



Back

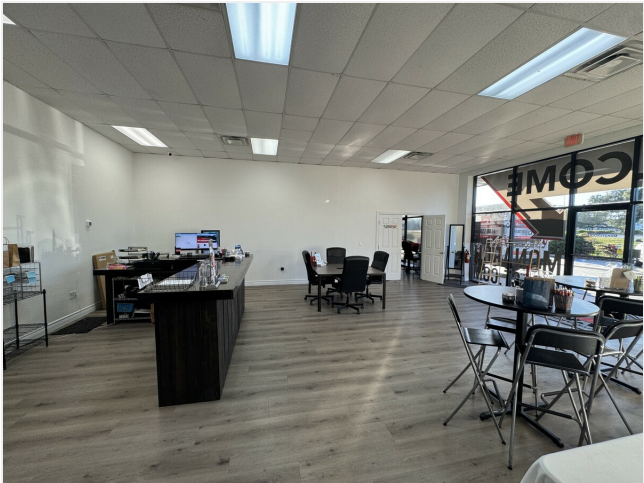


Plat Map

Major Tenant Information

Tenant	SF Occupied	Lease Expired
Charlotte Plumbing	-	
Monarch Direct	-	

1264 Market Cir, Port Charlotte, FL 33953



Suite 3



Suite 4 & 5

Listing spaces

1st Floor Ste 4-5

Space Available	3,000 SF
Rental Rate	\$17.00 /SF/YR
Contiguous Area	7,500 SF
Date Available	December 01 , 2025
Service Type	Triple Net (NNN)
Space Type	New
Space Use	Industrial
Lease Term	Negotiable

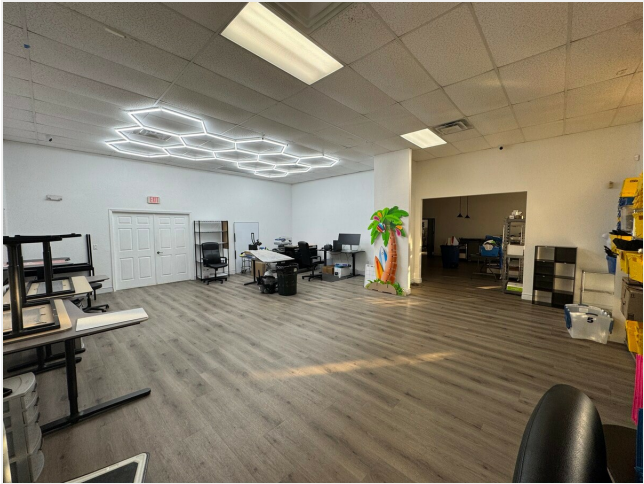
Prime commercial/industrial property located in the heart of Port Charlotte's business district. This flexible space totals 7,500 square feet and can be leased as a whole or subdivided into three units: two 3,000 sq. ft. sections and one 1,500 sq. ft. section. Each space includes office/reception areas up front and warehouse/storage areas in the rear with bay door access for easy loading and unloading.

1st Floor Ste 6

Space Available	1,500 SF
Rental Rate	\$17.00 /SF/YR
Contiguous Area	7,500 SF
Date Available	December 01 , 2025
Service Type	Triple Net (NNN)
Space Type	New
Space Use	Industrial
Lease Term	Negotiable

Prime commercial/industrial property located in the heart of Port Charlotte's business district. This flexible space totals 7,500 square feet and can be leased as a whole or subdivided into three units: two 3,000 sq. ft. sections and one 1,500 sq. ft. section. Each space includes office/reception areas up front and warehouse/storage areas in the rear with bay door access for easy loading and unloading.

1264 Market Cir, Port Charlotte, FL 33953



Suite 5

Listing spaces

1st Floor Ste 7-8

Space Available	3,000 SF
Rental Rate	\$17.00 /SF/YR
Contiguous Area	7,500 SF
Date Available	December 01 , 2025
Service Type	Triple Net (NNN)
Space Type	New
Space Use	Industrial
Lease Term	Negotiable

Prime commercial/industrial property located in the heart of Port Charlotte’s business district. This flexible space totals 7,500 square feet and can be leased as a whole or subdivided into three units: two 3,000 sq. ft. sections and one 1,500 sq. ft. section. Each space includes office/reception areas up front and warehouse/storage areas in the rear with bay door access for easy loading and unloading.

1264 Market Cir

1264 Market Cir, Port Charlotte, FL 33953

Property Photos



Suite 7



Suite 8

1264 Market Cir

1264 Market Cir, Port Charlotte, FL 33953

Location

