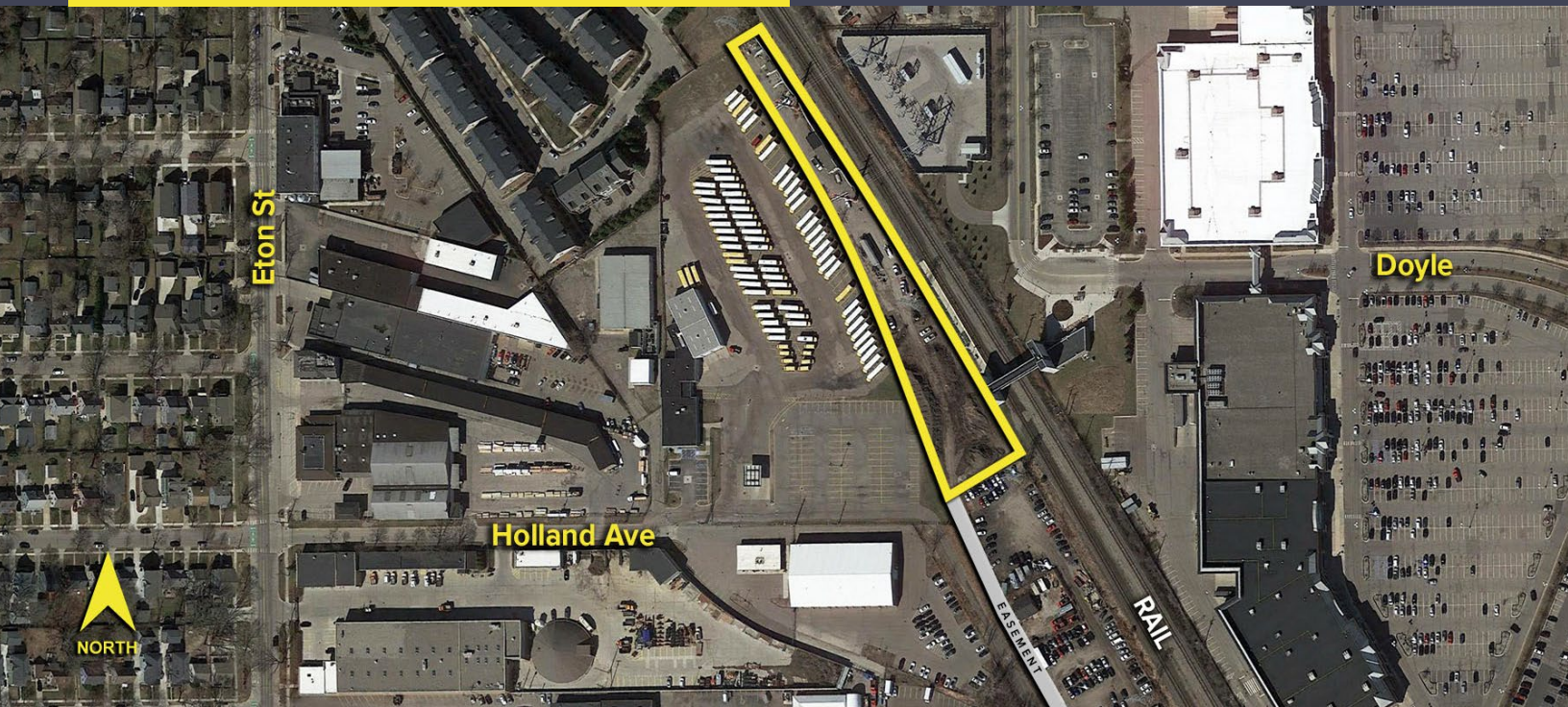


COLE STREET BIRMINGHAM, MICHIGAN

LAND FOR SALE
1.49 Acres Available



**SIGNATURE
ASSOCIATES**
KNOW SIGNATURE | KNOW RESULTS



PROPERTY FEATURES

- 1.49 acres available
- Zoned MX (mixed use), allows many uses including light industrial. Contact city for specifics
- Long parcel with electric service on the property and utilities at the street
- Outside storage available, see zoning restrictions
- Access by easement
- Unique opportunity in Birmingham
- Asking Price: \$895,000 (\$599,865.95/acre)



For more information, please contact:

DAVE MILLER
(248) 948 4183
dmiller@signatureassociates.com

CHRIS SECONTINE
(248) 799 3174
csecontine@signatureassociates.com

SIGNATURE ASSOCIATES
One Towne Square, Suite 1200
Southfield, MI 48076
www.signatureassociates.com

Cole Street – Birmingham, Michigan

Land For Sale

1.49
Acres
AVAILABLE

Aerial



For more information, please contact:

DAVE MILLER
(248) 948 4183
dmiller@signatureassociates.com

CHRIS SECONTINE
(248) 799 3174
csecontine@signatureassociates.com

SIGNATURE ASSOCIATES
One Towne Square, Suite 1200
Southfield, MI 48076
www.signatureassociates.com

Information is subject to verification and no liability for errors or omissions is assumed. Price is subject to change and listing withdrawal.