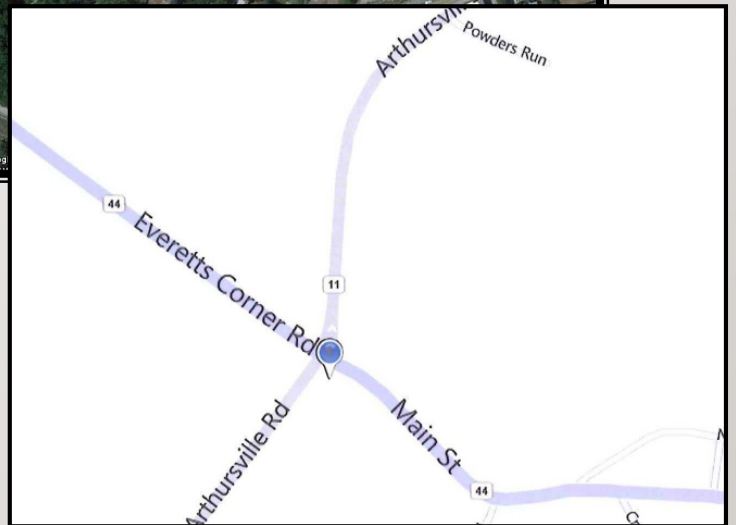




LAND FOR SALE

Corner of Main St & Arthursville Rd

Hartly, DE 19953



- Sale Price: \$300,000
- Acreage Available: 1.905+/- Acres
- Tax Parcel: 9-10-06319-01-1000-000
- Traffic Counts: Main St. 1,705 AADT 2008
Arthursville Rd 1,887 AADT 2008

Demographics:	1 Mile	2 Miles	3 Miles
Population 2009	521	3,572	10,093
Medium Income 2009	50,594	48,587	45,544



Charlie Rodriguez

ccrodi@aol.com

46 S State Street
Dover, DE 19901

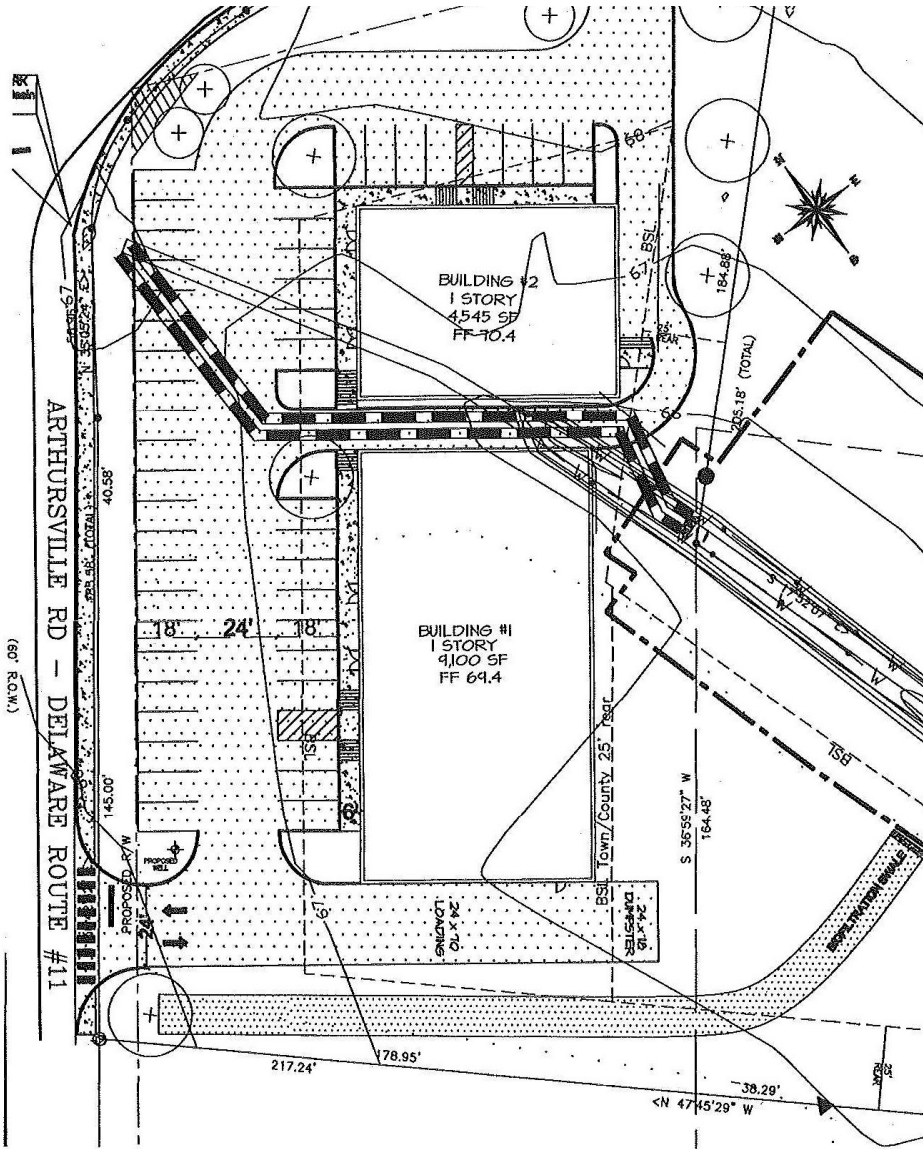
302-674-3400 Office
302-674-8479 Fax

www.randrcommercialrealty.com

LAND FOR SALE

Corner of Main St & Arthursville Rd

Hartly, DE 19953



Property is located at the intersection of Main Street & Arthursville Rd in close proximity to Hartly Elementary School, Post office and the Hartly Fire Station. The town has acquired public Sewer & Water. Site is fully approved and ready to begin construction in 60 days.

12-07-08
 Scale: 1" = 40'-0"
HARTLY TOWN CENTER
 Layout Plan



FOR MORE INFORMATION PLEASE CONTACT:

Charlie Rodriguez
 302-674-3400
 ccrodi@aol.com

46 S State Street
 Dover, DE 19901
 302-674-3400 Office
 302-674-8479 Fax

www.randcommercialrealty.com