

FOR SALE

18,920 SF SINGLE TENANT INDUSTRIAL WAREHOUSE

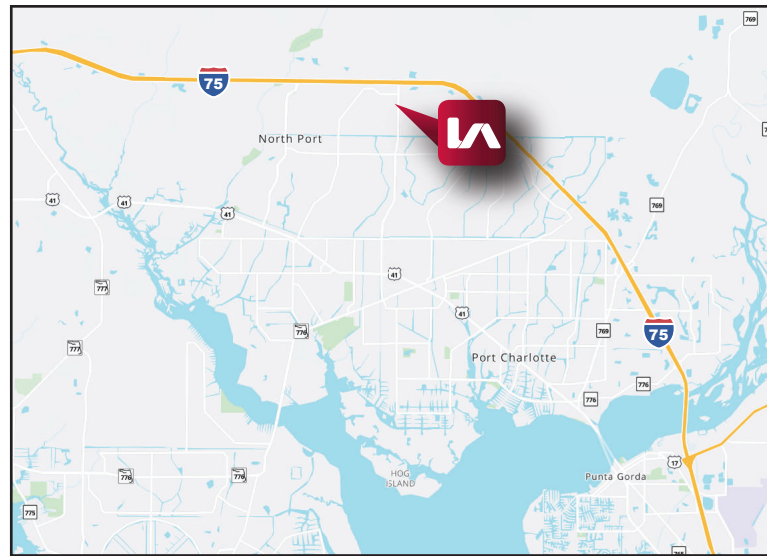
2885 COMMERCE PARKWAY, NORTH PORT, FLORIDA 34289



- **BUILDING SIZE:** 18,920 SF
- **LAND SIZE:** 1.53 AC
- **SALE PRICE:** \$4,200,000
- **ZONING:** CG (Commercial General)
click [here](#) for permitted uses

PROPERTY FEATURES

- Excellent Owner-User or Investment Opportunity!
- 18,920 SF Warehouse Facility Situated on 1.53 AC For Sale
- 1,800 SF Office / Showroom
- 22' Clear Height
- 3-Phase Electric Service
- Four (4) 48" Loading Docks
- Two (2) 12' x 16' Grade-Level Doors



Please Contact:

Bob Johnston, SIOR
Principal

239.210.7601

 bjohnston@lee-associates.com

Jerry Messonnier, SIOR
Principal

All information furnished regarding property for sale, rental or financing is from sources deemed reliable, but no warranty or representation is made to the accuracy thereof and same is subject to errors, omissions, change of price, or other conditions prior to sale, lease or financing or withdrawal without notice. No liability of any kind is to be imposed on the broker herein.

YOUR LOCAL MARKET **EXPERT**

9979 Gulf Logistics Drive, Suite 210 | Fort Myers, Florida 33913 | Lee-FL.com

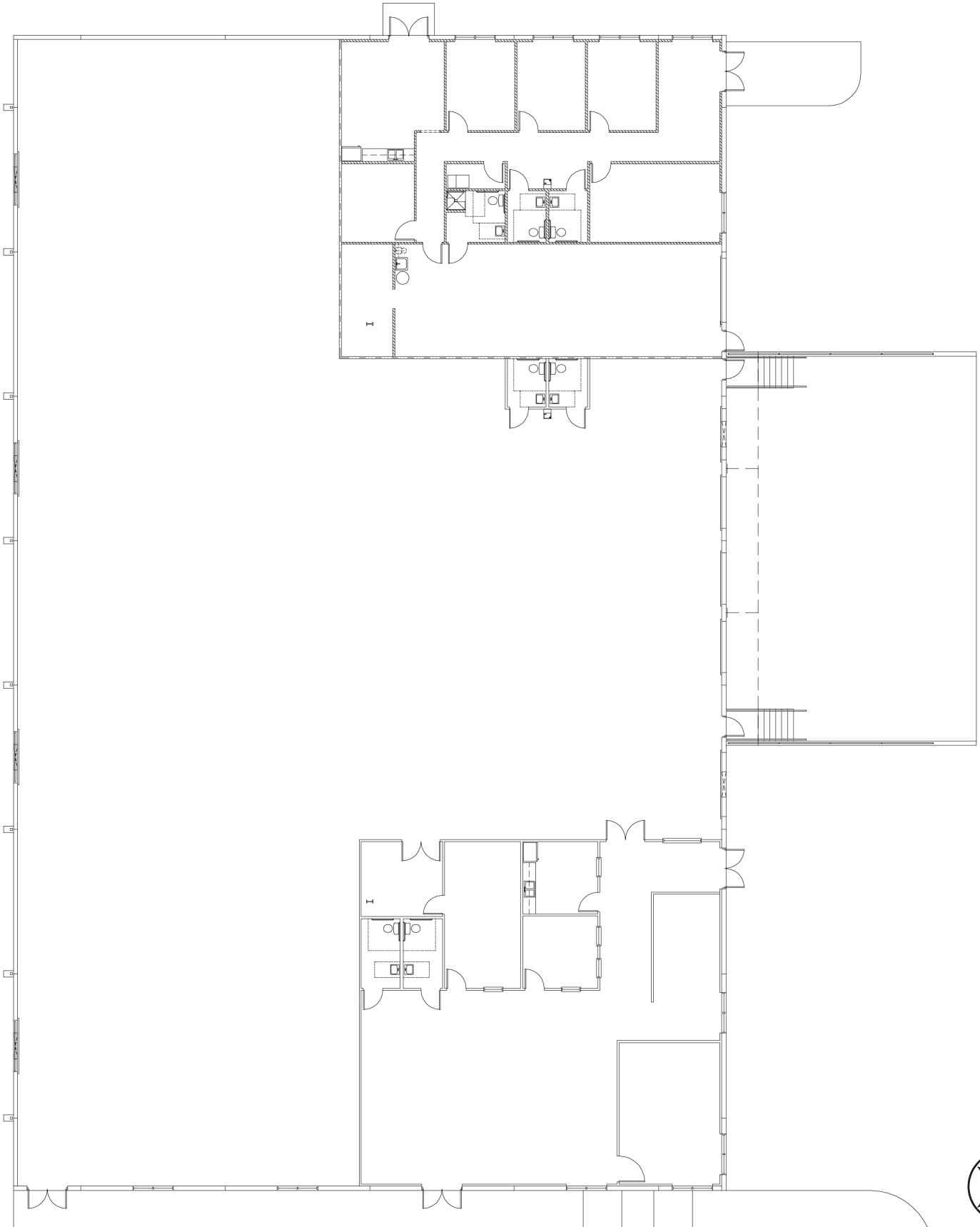
FOR SALE

18,920 SF SINGLE TENANT INDUSTRIAL WAREHOUSE

2885 COMMERCE PARKWAY, NORTH PORT, FLORIDA 34289

LEE & ASSOCIATES

COMMERCIAL REAL ESTATE SERVICES



YOUR LOCAL MARKET **EXPERT**

9979 Gulf Logistics Drive, Suite 210 | Fort Myers, Florida 33913 | Lee-FL.com

X @ in f

FOR SALE

18,920 SF SINGLE TENANT INDUSTRIAL WAREHOUSE

2885 COMMERCE PARKWAY, NORTH PORT, FLORIDA 34289

LEE & ASSOCIATES

COMMERCIAL REAL ESTATE SERVICES



YOUR LOCAL MARKET **EXPERT**

9979 Gulf Logistics Drive, Suite 210 | Fort Myers, Florida 33913 | Lee-FL.com

X @ in f