

1001 Warrenville Road
Suite 550
1001 Warrenville Road
Lisle, IL 60532



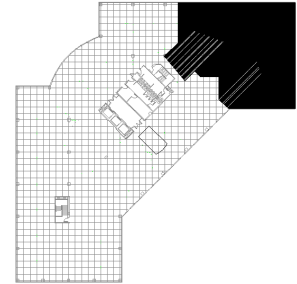
DETAILS

Square Feet: 8,015 S.F.
Net Rent: \$13.75/S.F.
OP. Expense: \$8.01/S.F.
Tax: \$2.83/S.F.
Gross Rent: \$24.72/S.F.

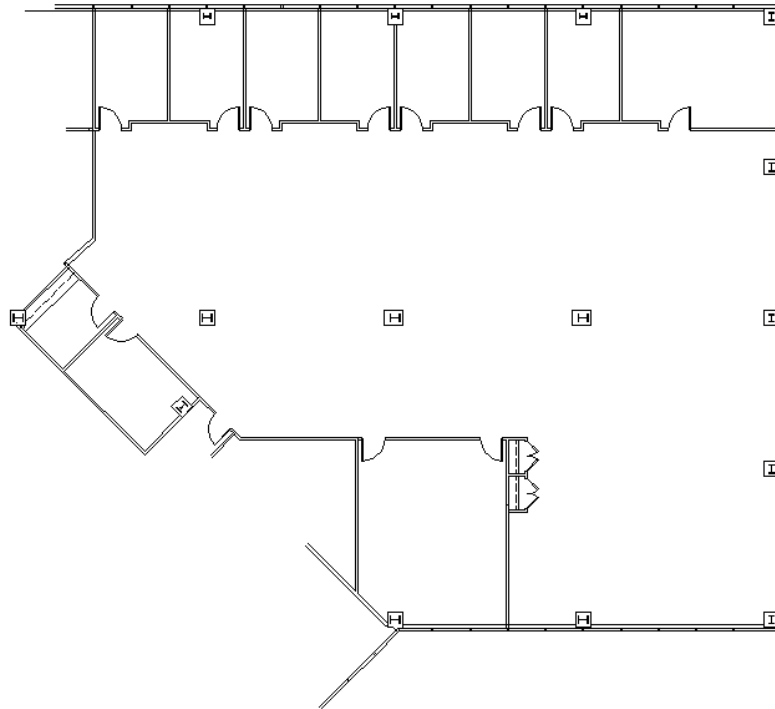
SUITE FEATURES

- Top floor space with windows on three exposures
- 8' perimeter private offices
- All private offices have sidelights and clerestory windows
- Open area plans perfectly for workstations/bullpen
- Excellent views

FIFTH FLOOR PLAN



SPACE PLAN



CONTACT INFORMATION

David Andrews

✉ da@hpre.com

P 630-719-5565

F 630-719-5570

Philip Sheridan

✉ phil_sheridan@hpre.com

P 630-719-5567

F 630-719-5570