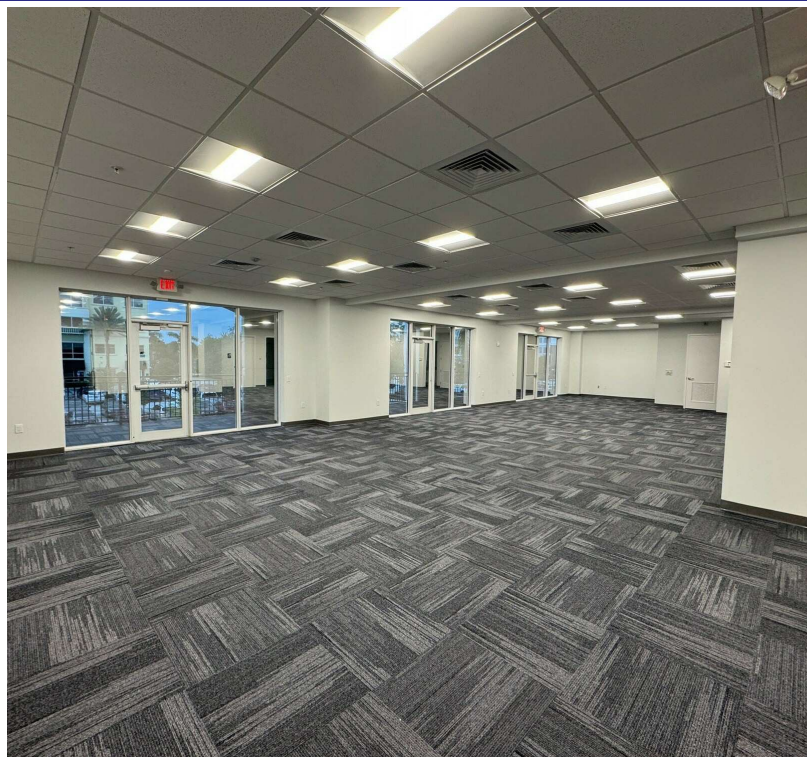
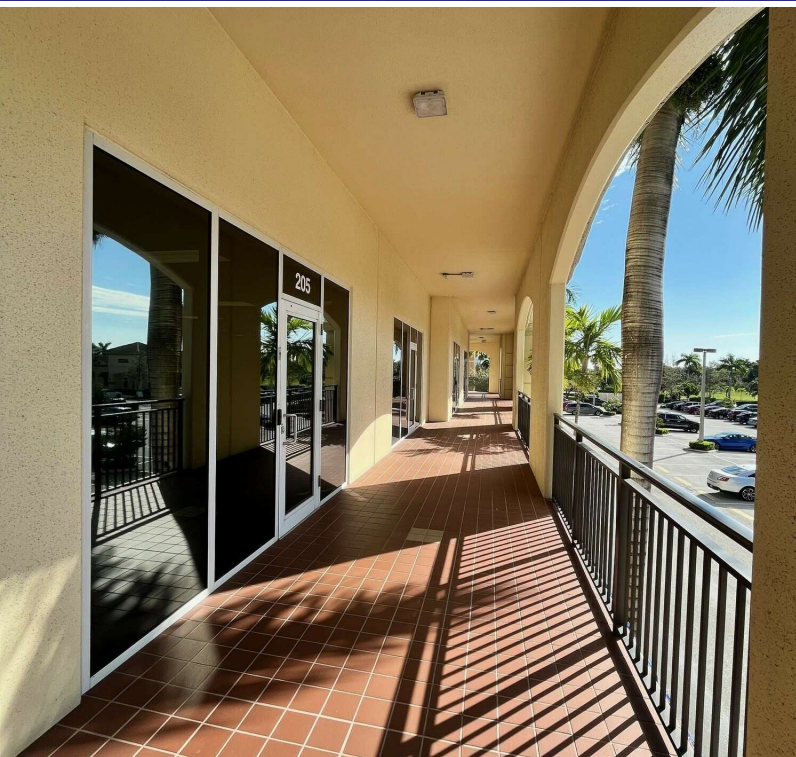


# PGA PROFESSIONAL BUILDING

4290 PROFESSIONAL CENTER DRIVE, PALM BEACH GARDENS, FL 33410

SUITES 205-207



## SPACE HIGHLIGHTS

- 3,403 SF office suite
- BUILDING SIGNAGE AVAILABLE
- NEWLY RENOVATED - New paint, flooring, and LED Lighting
- Four offices
- Large open bullpen area
- Three entry doors can use three addresses
- Kitchen
- In suite men's and women's restrooms
- Garage parking at no charge
- Floor to ceiling windows
- Lots of natural light
- \$15 psf CAM
- CAM excludes electric and janitorial
- Landlord can subdivide space to 1,172 SF and 2,231 SF



## JUDY MONTELLA

Executive Vice President/Certified Property Manager / Broker Associate  
Direct: 954.491.5505 | Cell: 954.676.1860  
judy@levyrai.com





# PGA PROFESSIONAL BUILDING

4290 PROFESSIONAL CENTER DRIVE, PALM BEACH GARDENS, FL 33410

## SUITES 205-207 ADDITIONAL PHOTOS



### JUDY MONTELLA

Executive Vice President/Certified Property Manager / Broker Associate  
Direct: 954.491.5505 | Cell: 954.676.1860  
judy@levyrai.com



# PGA PROFESSIONAL BUILDING

4290 PROFESSIONAL CENTER DRIVE, PALM BEACH GARDENS, FL 33410

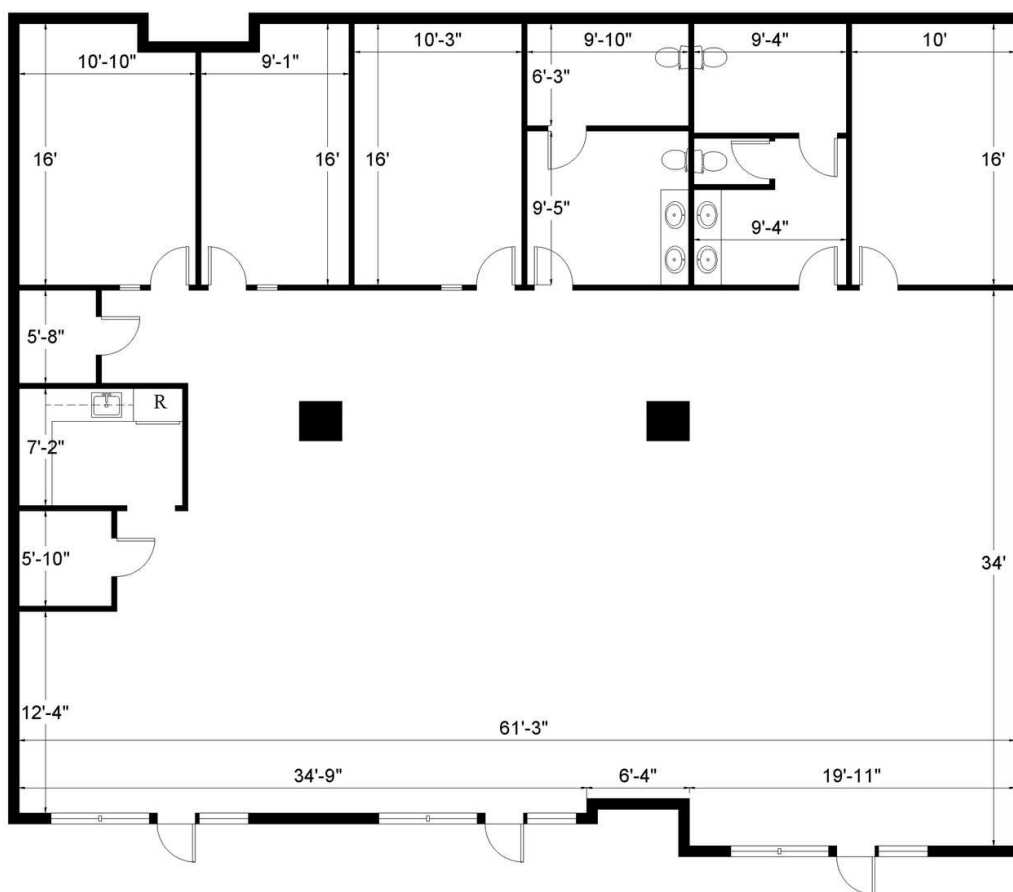
## SUITES 205-207 FLOOR PLAN

### PGA PROFESSIONAL CENTER

4290 Professional Center Drive | Palm Beach Gardens, FL 33410



SUITE 205-207



3,403 Rentable Sq. Ft.  
[www.LevyRealtyAdvisors.com](http://www.LevyRealtyAdvisors.com)

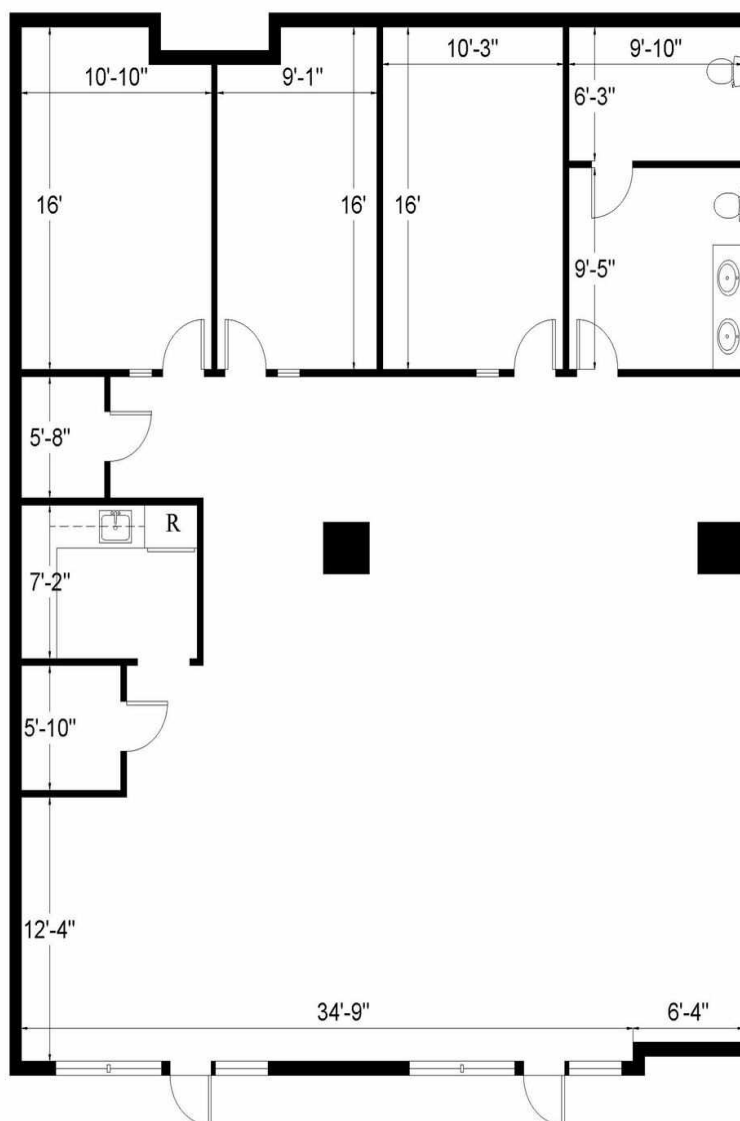
#### JUDY MONTELLA

Executive Vice President/Certified Property Manager / Broker Associate  
 Direct: 954.491.5505 | Cell: 954.676.1860  
[judy@levyrai.com](mailto:judy@levyrai.com)



## PGA PROFESSIONAL CENTER

4290 Professional Center Drive | Palm Beach Gardens, FL 33410



2,231 Rentable Sq. Ft.  
www.LevyRealtyAdvisors.com

**JUDY MONTELLA**

Executive Vice President/Certified Property Manager / Broker Associate  
Direct: 954.491.5505 | Cell: 954.676.1860  
judy@levyrai.com





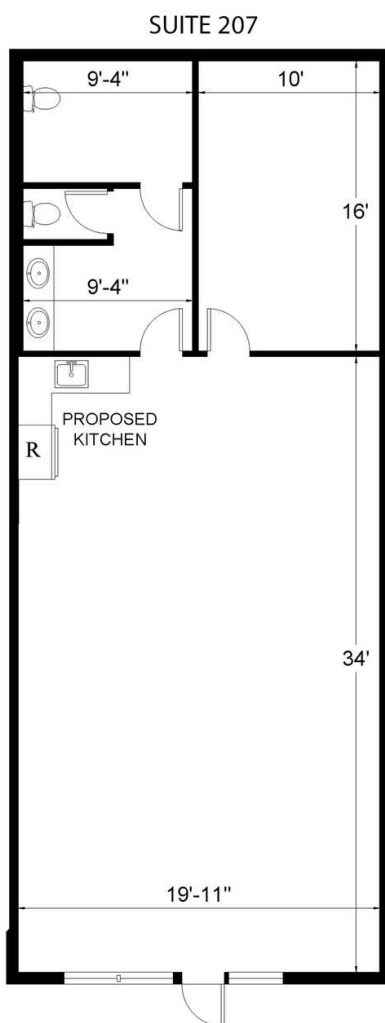
# PGA PROFESSIONAL BUILDING

4290 PROFESSIONAL CENTER DRIVE, PALM BEACH GARDENS, FL 33410

## SUITE 207 FLOOR PLAN

### PGA PROFESSIONAL CENTER

4290 Professional Center Drive | Palm Beach Gardens, FL 33410



1,172 Rentable Sq. Ft.  
[www.LevyRealtyAdvisors.com](http://www.LevyRealtyAdvisors.com)

#### JUDY MONTELLA

Executive Vice President/Certified Property Manager / Broker Associate  
 Direct: 954.491.5505 | Cell: 954.676.1860  
[judy@levyrai.com](mailto:judy@levyrai.com)

