

# 61 BROAD STREET

Downtown Charleston SC

In the heart of Charleston's Historic District

OFFICE SPACE // 3,368 SF AVAILABLE



**BROOKE ADEE**

brooke.eyrich@jll.com

+1 301 525 3237

@brookeadee\_\_

**BRIAN CONNOLLY**

brian.connolly@jll.com

+1 202 316 4846



# THE SITE

## ADDRESS

61 Broad Street

## YEAR BUILT

1815

## BUILDING TOTAL SF

7,058 SF

## AVAILABLE SF

3,368 SF

## AVAILABILITY

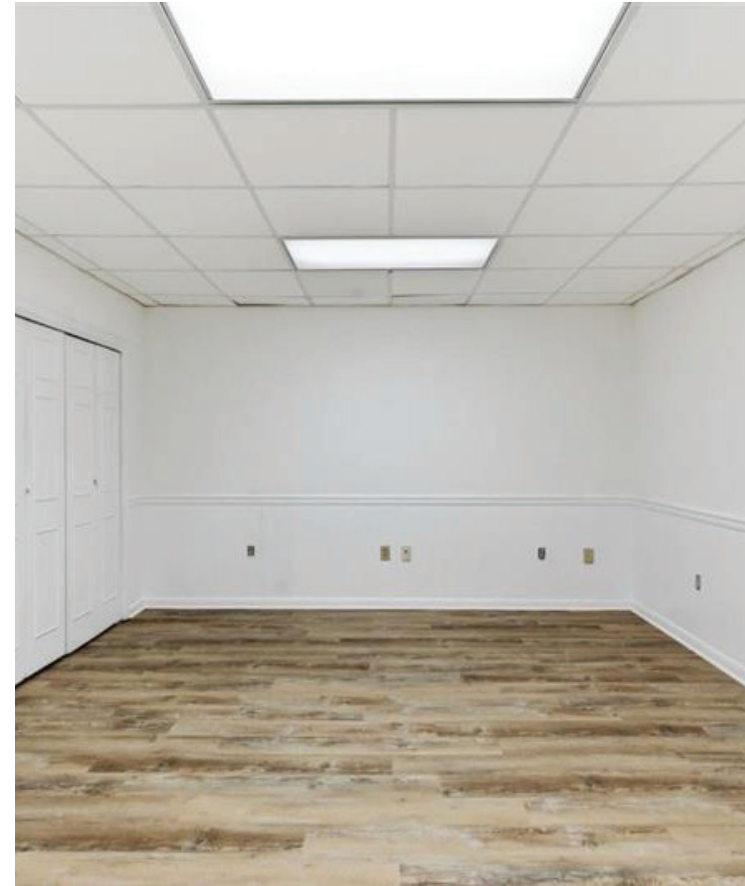
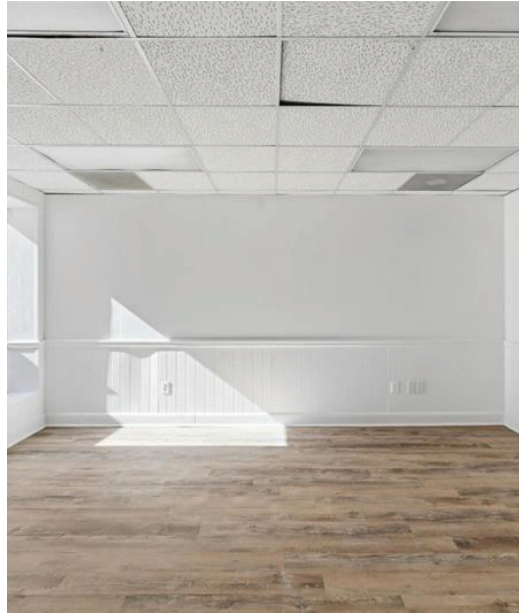
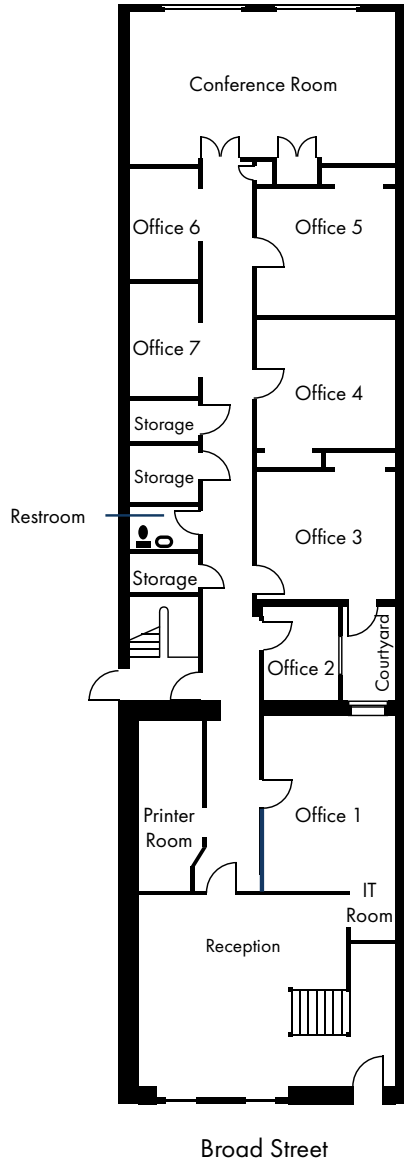
Vacant today

## PARKING

Contact Broker for Details



# FLOOR PLAN



Ground Floor - 3,368 SF

# AREA OVERVIEW



North Charleston

Daniel Island

Mt. Pleasant

Arthur Ravenel Jr. Bridge

MARKET STREET

KING STREET

MEETING STREET

EAST BAY STREET

West Ashley  
Johns Island  
James Island

BROAD STREET

# SURROUNDING AMENITIES



GOVERNORS INN HOTEL

U.S. DISTRICT COURTHOUSE

J. WATIES WARING JUDICIAL CENTER

ST. MICHAEL'S CHURCH

CHARLESTON PLASTIC SURGERY

Simpatico GALLERY

SEYAHAN



THE HAT MAN

Magnolias



F&R

BERNHARDI LAW OFFICES,

DARE GALLERY

Mildred Newberry

Alena Fede

JAKES MARKET

OAK STEAKHOUSE

Le Banque BRASSERIE

ST. JOHN BAPTIST

John Rutledge House Inn

Sorelle

HISTORIC COURTHOUSE

CHARLESTON PLACE

WASHINGTON SQUARE

THE GEORGE GALLERY

South State



The ESTABLISHMENT



# MARKET PULSE

CHARLESTON, SOUTH CAROLINA

**40+**

**NEW RESIDENTS  
DAILY**

**3X**

**FASTER JOB GROWTH  
THAN U.S. AVERAGE**

**11<sup>TH</sup>**

**BEST PERFORMING  
U.S. CITY**

**84%**

**OF NATIONAL  
AVERAGE PAY**



**BROOKE ADEE**

brooke.eyrich@jll.com

+1 301 525 3237

@brookeadee\_\_

**BRIAN CONNOLLY**

brian.connolly@jll.com

+1 202 316 4846



Although information has been obtained from sources deemed reliable, JLL does not make any guarantees, warranties or representations, express or implied, as to the completeness or accuracy as to the information contained herein. Any projections, opinions, assumptions or estimates used are for example only. There may be differences between projected and actual results, and those differences may be material. JLL does not accept any liability for any loss or damage suffered by any party resulting from reliance on this information. If the recipient of this information has signed a confidentiality agreement with JLL regarding this matter, this information is subject to the terms of that agreement. ©2026 Jones Lang LaSalle Brokerage, Inc. All rights reserved.