

HEAVY EQUIPMENT WAREHOUSE AND/OR INDUSTRIAL OUTSIDE STORAGE

2000 Eco Park Blvd
South Mills, North Carolina



STABILIZED YARD CAN BE LEASED WITH OR WITHOUT THE BUILDING

- 12,500 SF Office Warehouse
 - 3,728 SF 2-Story Office
 - 7,500 SF Heavy Equipment Warehouse
 - 1,272 SF Storage Mezzanine
- 24' – 27' Clear Ceiling Height
- (6) 16'x16' Electric Grade-Level Doors
- (2) 5-ton Overhead Cranes
- 400 amp, 480 volt, 3-Phase Electrical Service
- Compressed Air, Oil, and Electricity Supplied Overhead throughout Warehouse
- Locker Room with Shower
- Breakroom
- Conference Room
- High Speed Internet, Telephone, Water, and Septic
- Built in 2022
- Zoned PD (Planned Development)
- 14 Acres of Stabilized Yard
- Automatic Gate with Keypad
- Security Alarm with Cameras
- Dual Loading Dock Platform for Tractor-Trailers and Flatbed Trucks
- LEASE RATE: \$8.00 psf, NNN for the Building
\$3,000 per acre per month,
NNN for the Stabilized Yard



For more information:

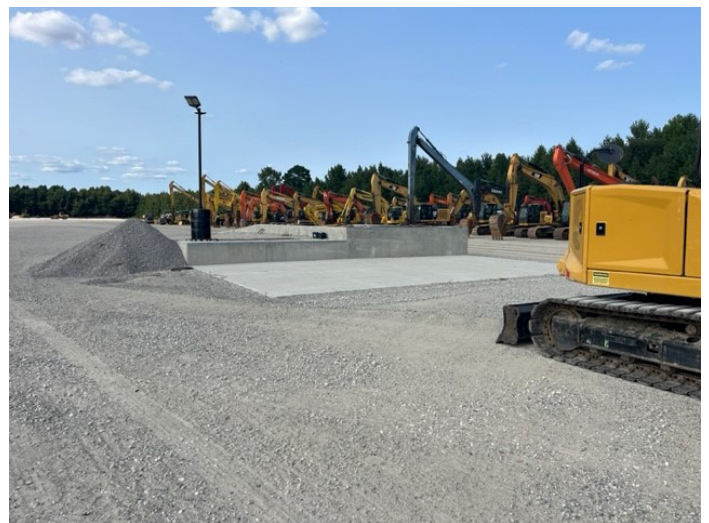
BOBBY BEASLEY, III, SIOR
757.640.8241

BobbyBeasley3@HarveyLindsay.com

HARVEY LINDSAY
COMMERCIAL REAL ESTATE

www.harveylindsay.com

PHOTOS | 2000 Eco Park Blvd, South Mills, MC



For more information:
BOBBY BEASLEY, III, SIOR
757.640.8241
BobbyBeasley3@HarveyLindsay.com

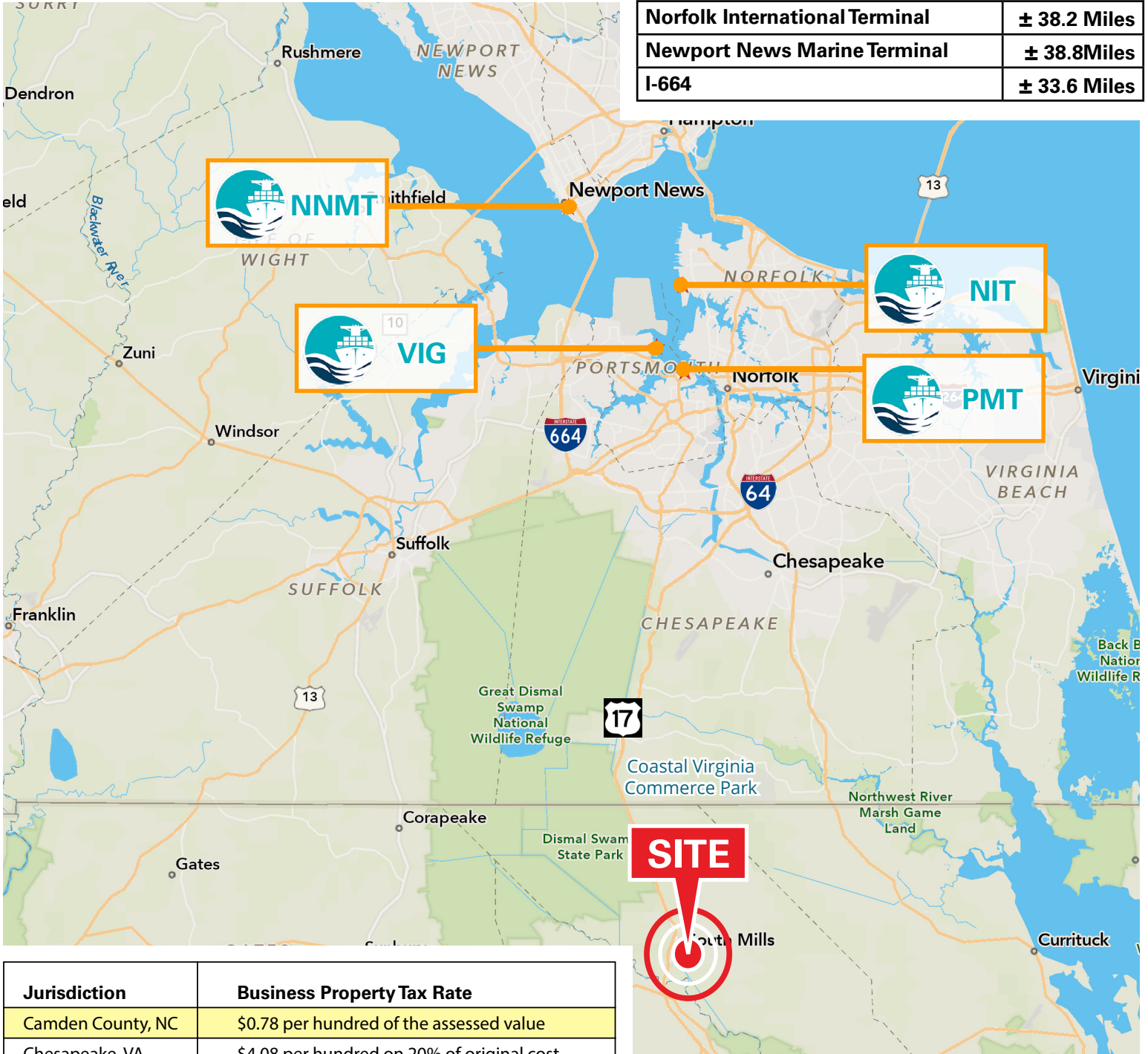
999 Waterside Drive • Suite 1400
Norfolk, Virginia 23510
757-640-8700
www.HarveyLindsay.com

HARVEY LINDSAY
COMMERCIAL REAL ESTATE

PORT MAP | 2000 Eco Park Blvd, South Mills, MC

DISTANCE TO PORTS (APPROXIMATE)

Portsmouth Marine Terminal	± 31.0 Miles
Virginia International Gateway	± 32.6 Miles
Norfolk International Terminal	± 38.2 Miles
Newport News Marine Terminal	± 38.8 Miles
I-664	± 33.6 Miles



Jurisdiction	Business Property Tax Rate
Camden County, NC	\$0.78 per hundred of the assessed value
Chesapeake, VA	\$4.08 per hundred on 20% of original cost
Suffolk, VA	\$4.25 per hundred on 20% of original cost
Portsmouth, VA	\$5.00 per hundred on 50% of original cost
Norfolk, VA	\$4.33 per hundred on 40% of original cost
Virginia Beach, VA	\$4.00 per hundred on 40% of original cost

For more information:
BOBBY BEASLEY, III, SIOR
 757.640.8241
BobbyBeasley3@HarveyLindsay.com

999 Waterside Drive • Suite 1400
 Norfolk, Virginia 23510
 757-640-8700
www.HarveyLindsay.com

HARVEY LINDSAY
 COMMERCIAL REAL ESTATE