

528-530 E. Eisenhower, 1340 N. Washington A&B and 1342 N. Washington  
Loveland, CO | \$989,900



528-530 E. Eisenhower



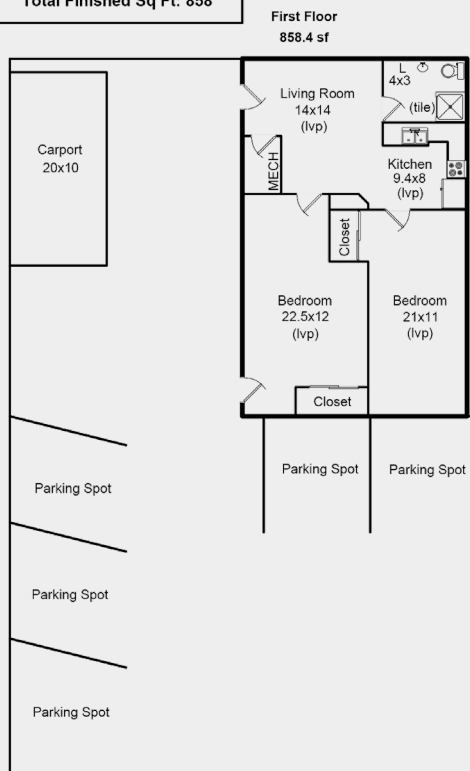
1340 N. Washington A&B and 1342 N. Washington



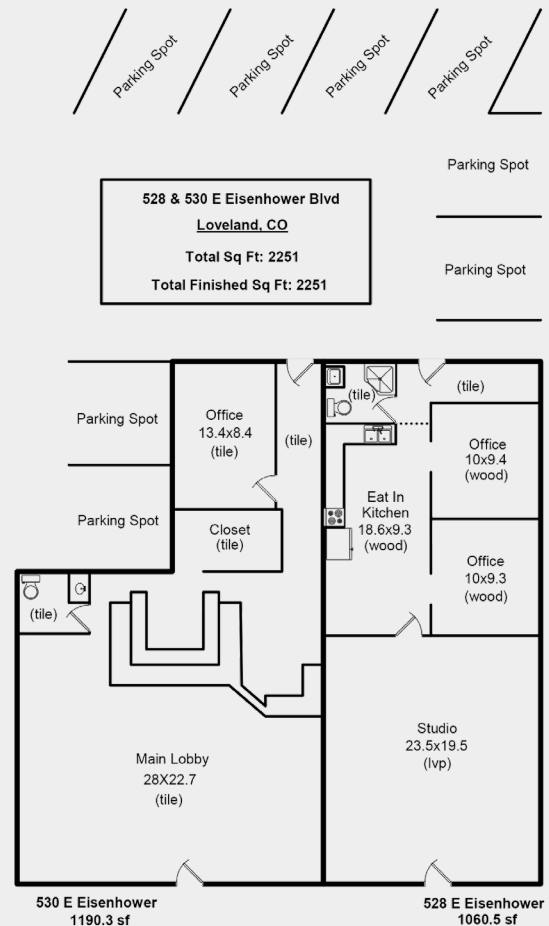
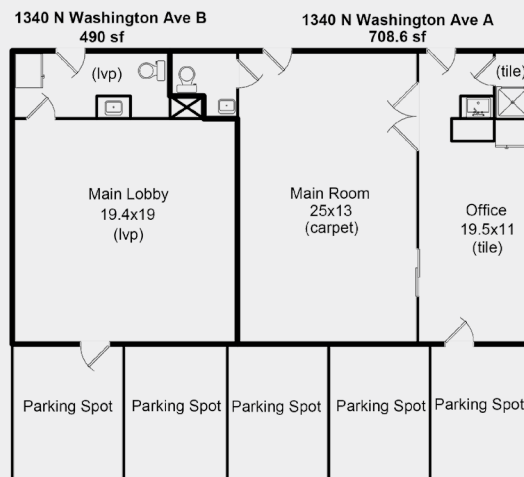


Included in this price are 5 units not to be sold separately. 528-530 E. Eisenhower, 1340 N. Washington A&B and 1342 N. Washington. The units are in excellent condition and are all currently leased. Four of the units are leased commercially and one is leased as a residential unit. All units have updated spaces with large main rooms perfect for retail or client lounge. There are private baths in each unit. 528 E. Eisenhower is 1060 sq. ft and has an updated kitchen with all appliances included, a 3/4 bath, two offices and a main lobby. 530 E. Eisenhower is 1190 sq. ft and has 1/2 bath, main lobby, office and plenty of storage. 1340 N. Washington A is 708 sq. ft. and has a 3/4 bath, office and main lobby. 1340 N. Washington B is 490 sq. ft. and has a main lobby and 1/2 bath. The residential rental unit at 1342 N. Washington is 858 sq. ft. and has 2 bedrooms, 3/4 bath, full kitchen with all appliances and a family room. Excellent location on the Highway 34 corridor for visibility and traffic.

1342 N Washington Ave  
Loveland, CO  
Total Sq Ft: 858  
Total Finished Sq Ft: 858



1340 N Washington Ave  
Loveland, CO  
Total Sq Ft: 1271  
Total Finished Sq Ft: 1271



Ample off street parking for all units. Loveland is a thriving economic community with these properties are centrally located for success. Seller is executing a 1031 Exchange. Listing agent must be present at all showings. Day before notice please.

IRES MLS #: 1039209



**Patti Phillips**  
Broker Associate/Partner  
(970) 222-1928 Cellular  
(970) 419-2334 Direct  
pphillips@thegroupinc.com  
www.pattiphillipssellsnoco.com



**TheGroup**

**Phil Van Dorpe**  
Licensed Personal Assistant  
970-732-7033

pvandorpe@thegroupinc.com  
www.pattiphillipssellsnoco.com

