

385 Merrick Avenue, East Meadow, NY

Retail/Medical/Office Space Available for Lease



Available:	4,000 RSF + full basement 600 SF – 2 nd Floor
Price Per Sq. Ft.:	To Be Determined
Utilities:	Separate Meters
Occupancy:	Immediate
Parking:	5:1,000 on-site plus add'l street parking

Comments:

- Open layout with high ceilings and 2nd floor office space
- Located at a signalized intersection
- Directly across from NYU Langone Ambulatory Care
- Close proximity to Nassau University Medical Center
- The ceiling heights in the basement are 11' 8"; ground floor are 13' 6"
- Strong visibility with building built close to both roads

For further information or to arrange a tour, please call:

Harris Rousso
Executive Managing Director
516-942-8308
hrousso@resltd.com



Gerry Krush
Managing Director
516-942-8319
gkrush@resltd.com

500 North Broadway ▪ Suite 165 ▪ Jericho ▪ New York 11753 ▪ 516.942.8300 ▪ 516.942.8311 ▪ www.resltd.com

All information furnished regarding either property for sale, rental or the financing is from sources deemed reliable. No representation is made as to the accuracy thereof and submitted subject to errors, change of price, rental rates or other conditions, prior sale, lease or financing, or withdrawal without notice. All areas and dimensions are approximate.



1st FLOOR



LOWER LEVEL



2nd FLOOR

500 North Broadway ▪ Suite 165 ▪ Jericho ▪ New York 11753 ▪ 516.942.8300 ▪ 516.942.8311 ▪ www.resltd.com

All information furnished regarding either property for sale, rental or the financing is from sources deemed reliable. No representation is made as to the accuracy thereof and submitted subject to errors, change of price, rental rates or other conditions, prior sale, lease or financing, or withdrawal without notice. All areas and dimensions are approximate.



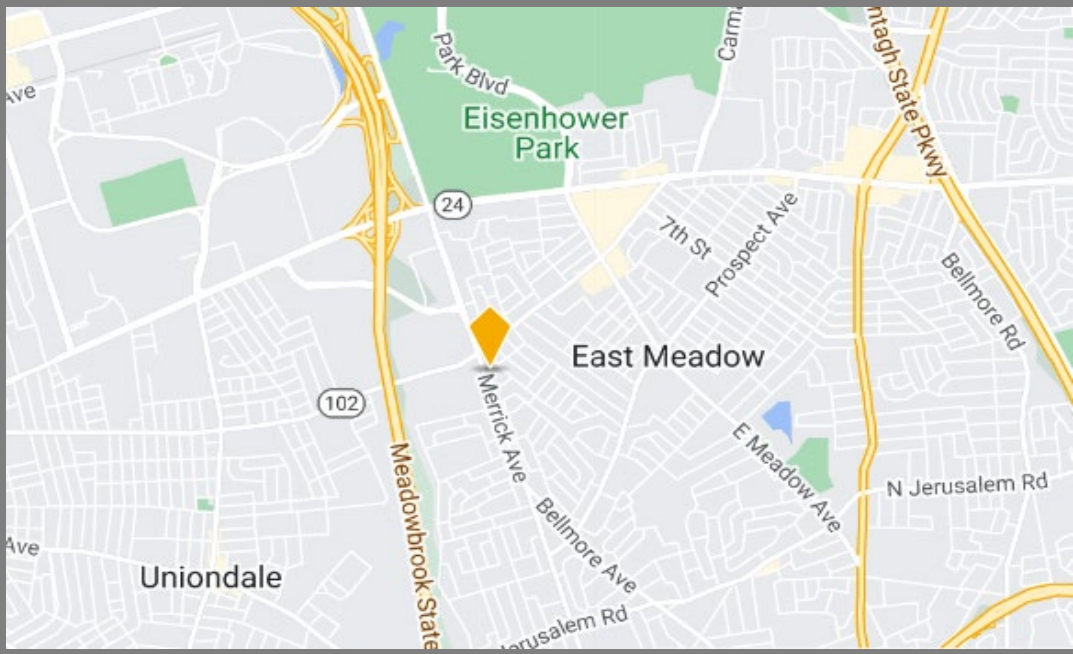
AERIAL VIEW



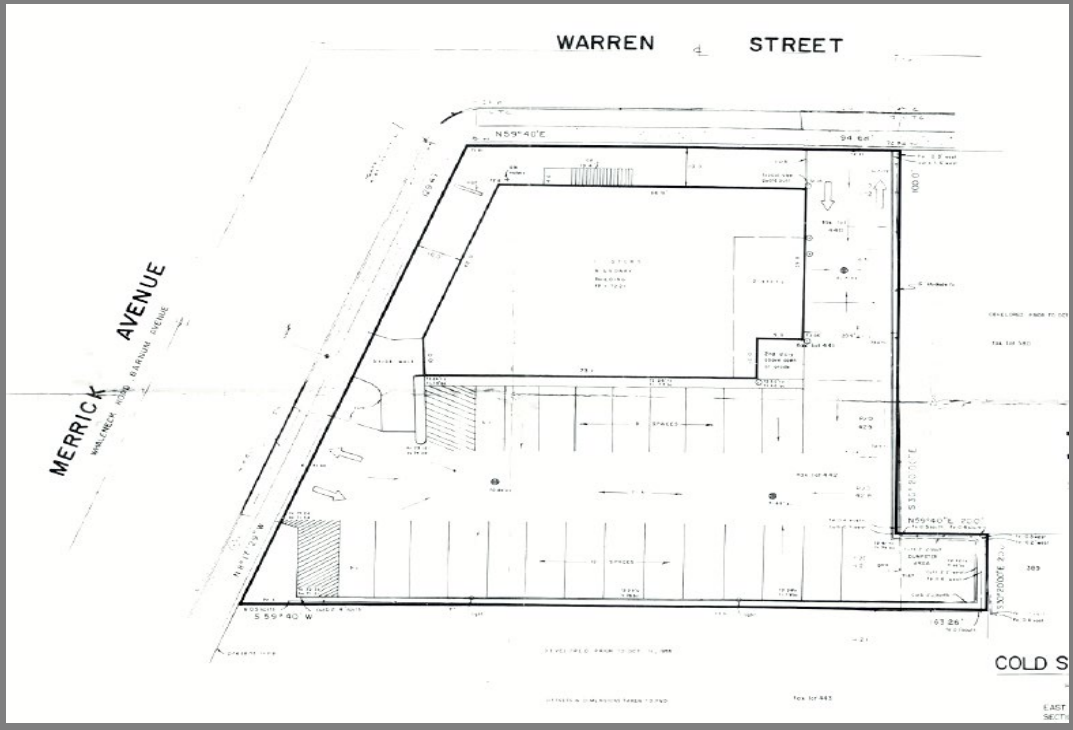
ON-SITE PARKING

500 North Broadway ▪ Suite 165 ▪ Jericho ▪ New York 11753 ▪ 516.942.8300 ▪ 516.942.8311 ▪ www.resltd.com

All information furnished regarding either property for sale, rental or the financing is from sources deemed reliable. No representation is made as to the accuracy thereof and submitted subject to errors, change of price, rental rates or other conditions, prior sale, lease or financing, or withdrawal without notice. All areas and dimensions are approximate.



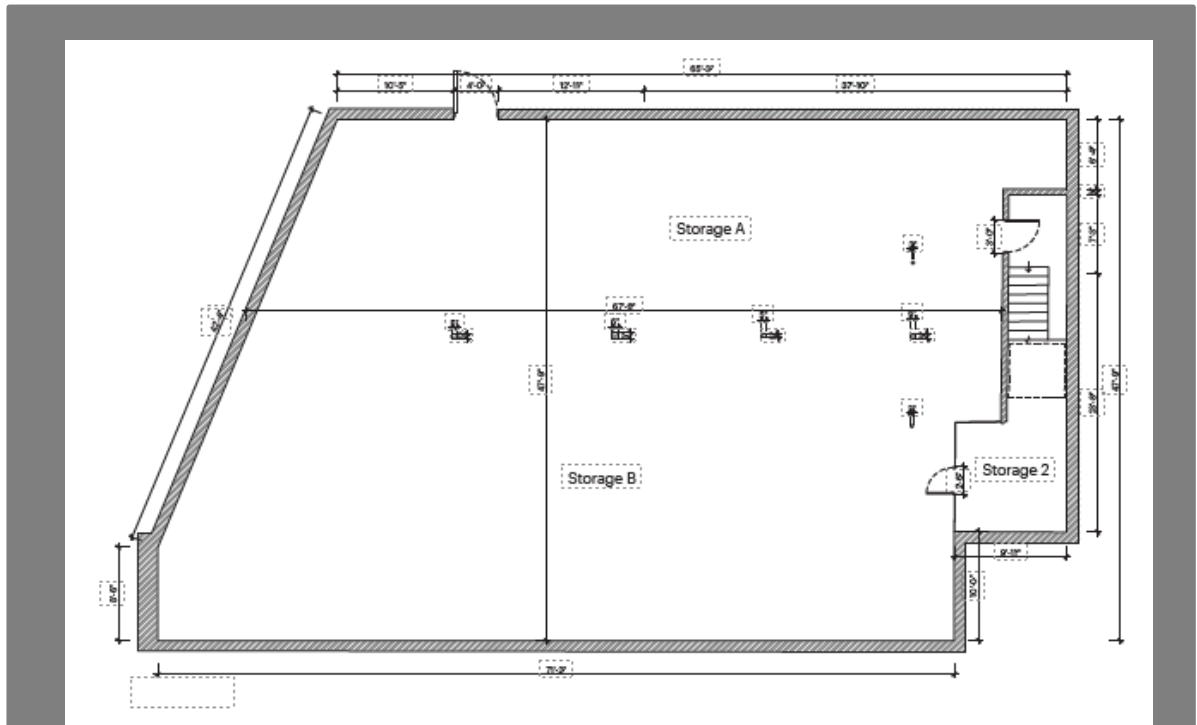
LOCATOR MAP



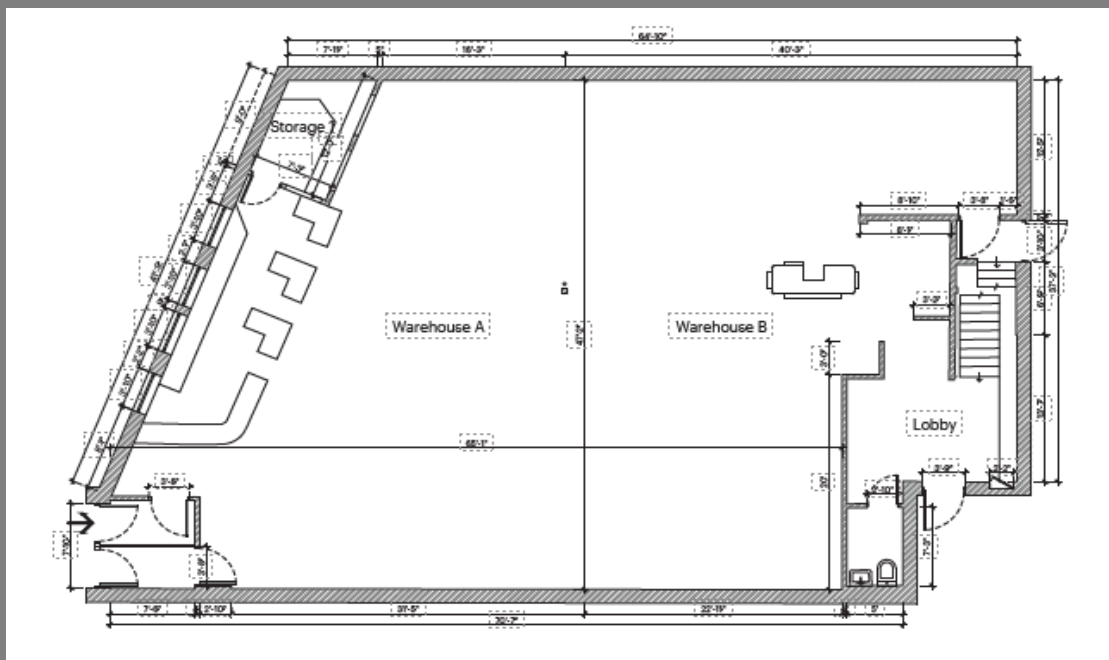
SITE PLAN

500 North Broadway ▪ Suite 165 ▪ Jericho ▪ New York 11753 ▪ 516.942.8300 ▪ 516.942.8311 ▪ www.resltd.com

All information furnished regarding either property for sale, rental or the financing is from sources deemed reliable. No representation is made as to the accuracy thereof and submitted subject to errors, change of price, rental rates or other conditions, prior sale, lease or financing, or withdrawal without notice. All areas and dimensions are approximate.



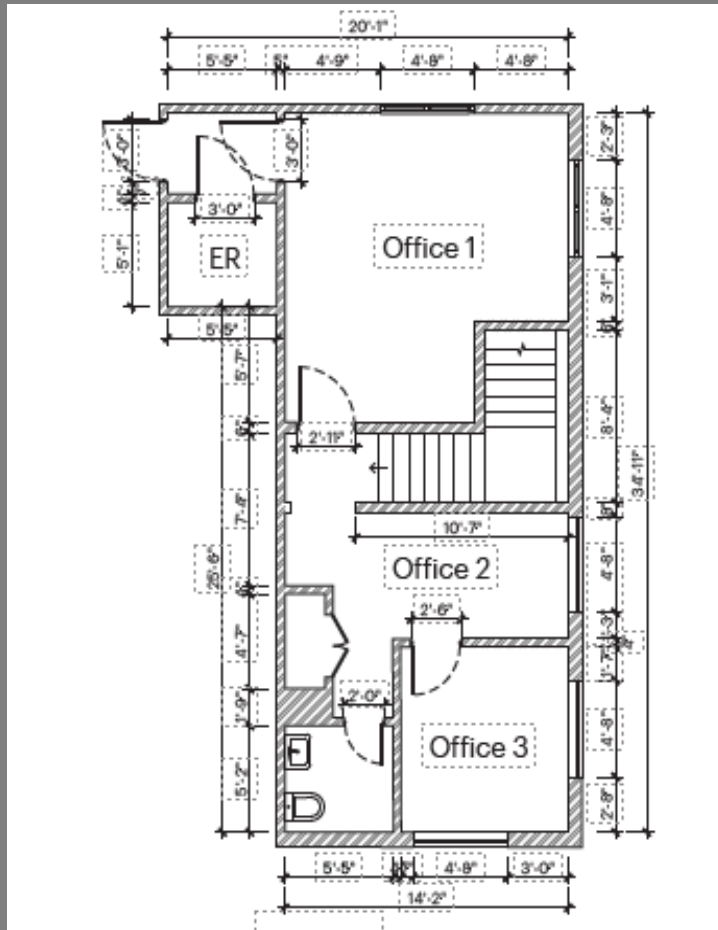
FLOOR PLAN – LOWER LEVEL



FLOOR PLAN – 1ST FLOOR

500 North Broadway ▪ Suite 165 ▪ Jericho ▪ New York 11753 ▪ 516.942.8300 ▪ 516.942.8311 ▪ www.resltd.com

All information furnished regarding either property for sale, rental or the financing is from sources deemed reliable. No representation is made as to the accuracy thereof and submitted subject to errors, change of price, rental rates or other conditions, prior sale, lease or financing, or withdrawal without notice. All areas and dimensions are approximate.



FLOOR PLAN – 2nd FLOOR