

TRUCK/TRAILER STORAGE YARD FOR SUBLEASE 2733 S AIRPORT WAY | STOCKTON | CA



- APN: 177-020-050
- Parcel Size: 9.26± Acres (will consider 1± - 9.26± acre uses)
- Zoning: I-G, General Industrial (City of Stockton)

PRICING: CONTACT AGENT FOR PRICING

For more information contact:

Jim Martin, SIOR
BRE #01214270
jmartin@lee-associates.com
D 209.983.4088
C 925.352.6948



Skylar Serrano
BRE #01790959
sserrano@leeirvine.com
D 949.790.3180
C 949.892.7666

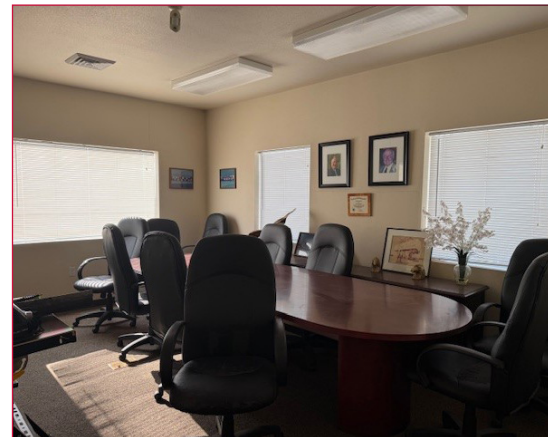
TRUCK/TRAILER STORAGE YARD

FOR SUBLEASE

2733 S AIRPORT WAY | STOCKTON | CA

PROPERTY FEATURES:

- **PARCEL SIZE:** 9.26± Acres (will lease all or a portion)
- **ZONING:** I-G, General Industrial (City of Stockton)
- **Office:** 4,700± SF (2-story) including conference/training room, private office, kitchen/break room and two (2) restrooms per floor
- **Covered Storage:** Two (2) 1,200± SF canopies
- **Located Near the Stockton Airport / Amazon Prime Terminal**
- **Trucking / Trailer Storage Yard**
- **Concrete surface (2.4± acres)**
- **Hard Pack Base (6.8± acres)**
- **Fully Lit & Fenced Yard including electric fencing**
- **Security Cameras and 24/7 Security**
- **24/7 Remote Dispatch Monitoring**
- **Guard shack w/ motorized rolling gates (2)**
- **Yard Hostler Assistance**
- **Excellent Access to Interstate  and Highway **
- **Lease Expiration: November 30, 2029**

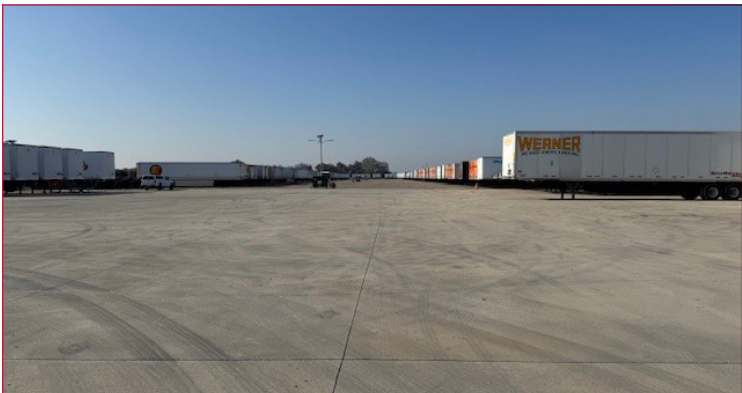
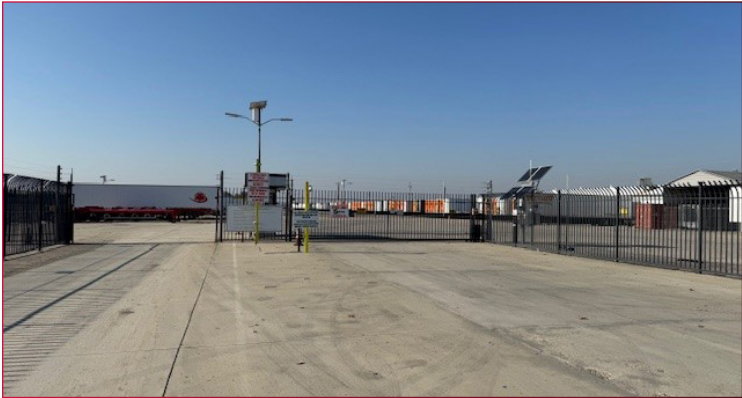
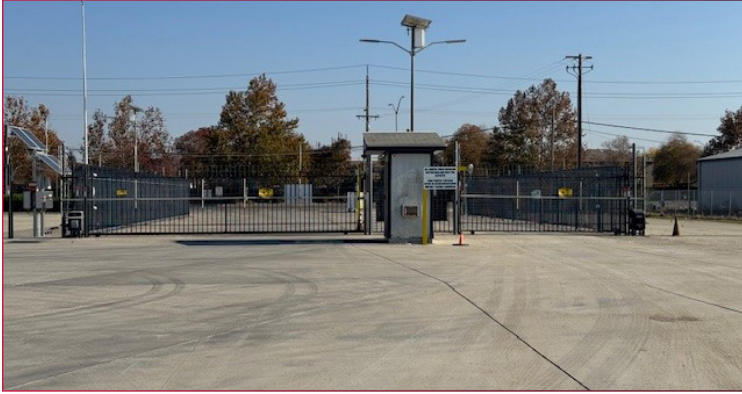


All information furnished regarding property for sale, rental or financing is from sources deemed reliable, but no warranty or representation is made to the accuracy thereof and same is submitted to errors, omissions, change of price, rental or other conditions prior to sale, lease or financing or withdrawal without notice. No liability of any kind is to be imposed on the broker herein.

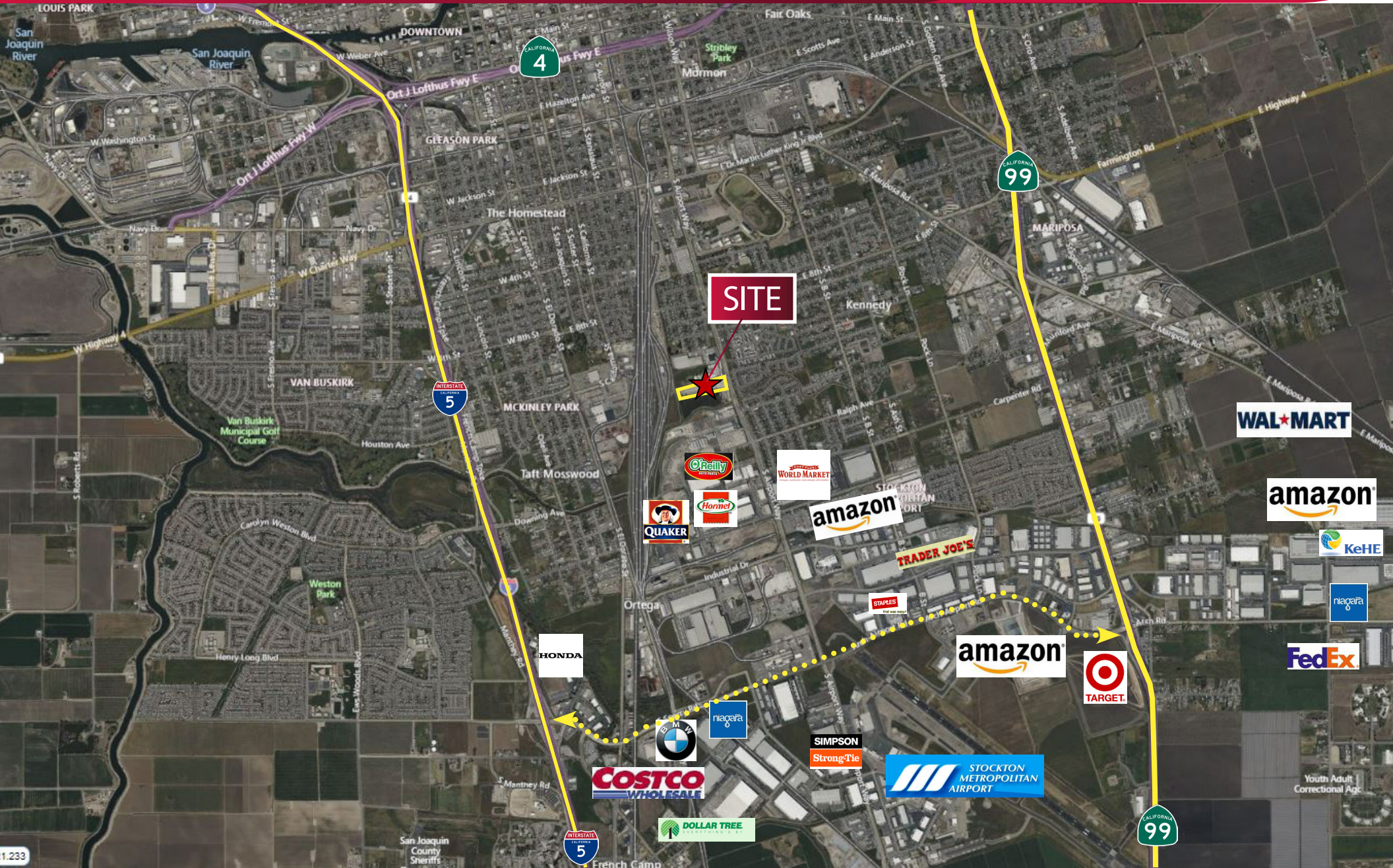
TRUCK/TRAILER STORAGE YARD

FOR SUBLEASE

2733 S AIRPORT WAY | STOCKTON | CA



TRUCK/TRAILER STORAGE YARD FOR SUBLEASE 2733 S AIRPORT WAY | STOCKTON | CA



TRUCK/TRAILER STORAGE YARD

FOR SUBLEASE

2733 S AIRPORT WAY | STOCKTON | CA

