

2,000 Amps in Place and Fully Paved



For Lease

±32,215 SF Crane-Ready Facility on ±3.61 AC

4950 N Sam Houston Pkwy E | Houston, TX

Mark Nicholas, SIOR
Executive Vice President
mark.nicholas@jll.com
+1 713 888 4024

Will Clay
Executive Vice President
will.clay@jll.com
+1 713 425 1810

Angela Watford
Associate
angela.watford@jll.com
+1 713 425 1848

Martin Gutierrez
Associate
martin.gutierrez@jll.com
+1 832 998 1870

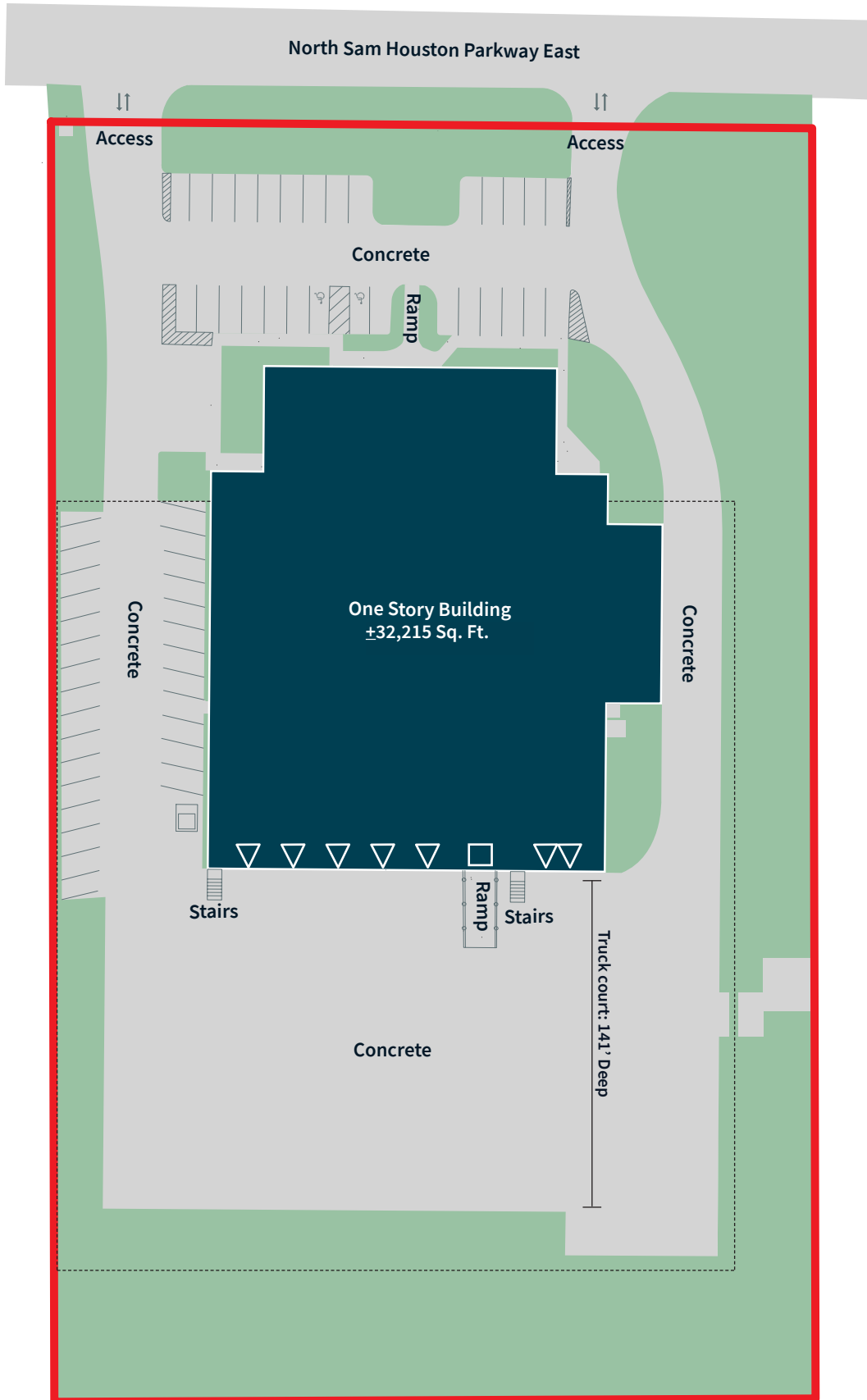


Property highlights

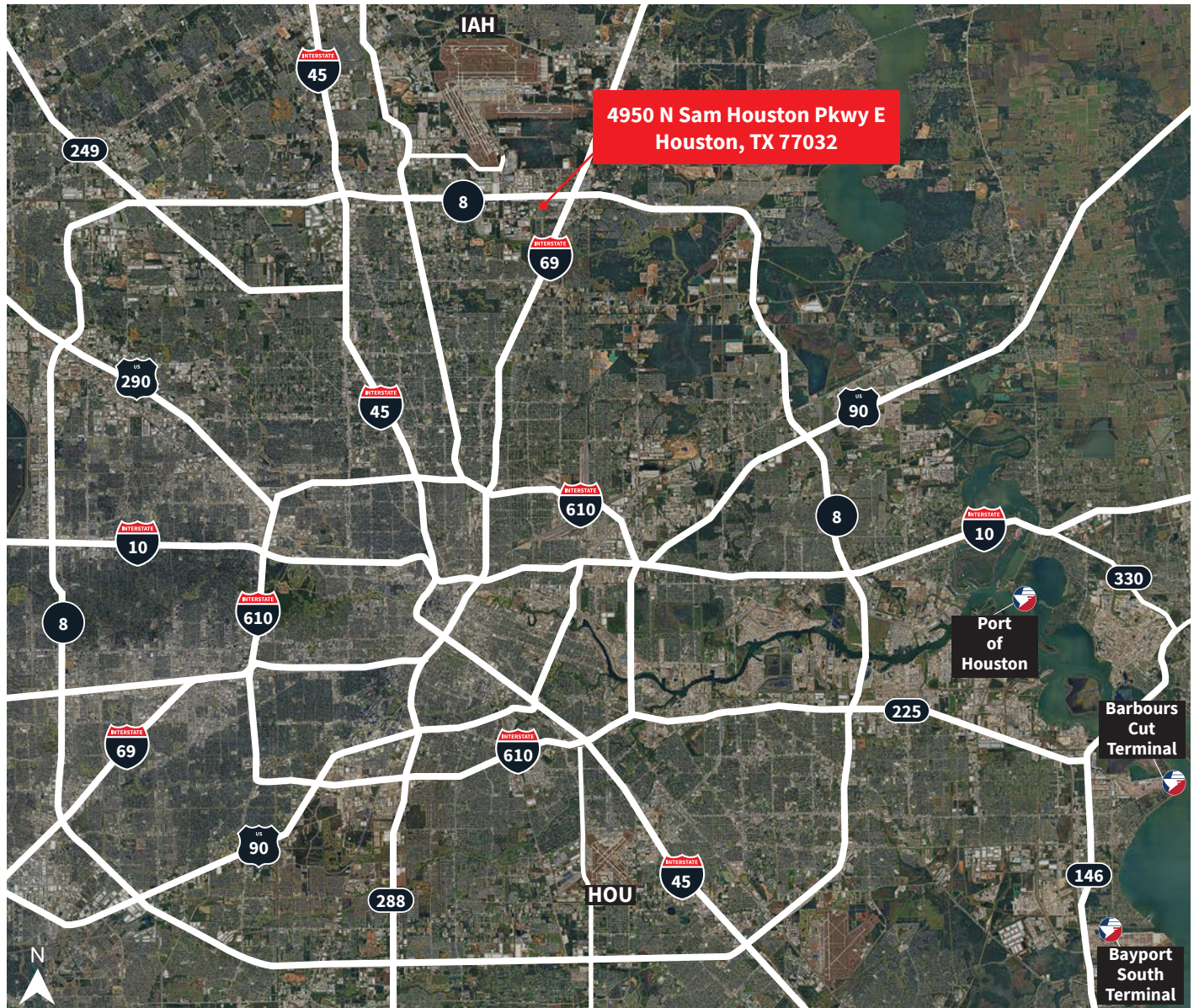
WAREHOUSE SF:	±27,215 S.F.	LOADING:	Five (5) Dock High Doors (10x10), One (1) Double Wide Internal Dock, One (1) Ramp (12x14)
OFFICE SF:	±5,000 S.F.	TRUCK COURT:	141' Deep (Fully Paved & Fenced)
LAND:	±3.61 Acres (Fully Paved)	POWER:	3-phase 480 Volts 2000 Amps
CLEAR HEIGHT:	24'	SPRINKLER:	Fully Sprinklered and Insulated
CRANES:	Up to 20-ton Crane Ready	<ul style="list-style-type: none">• FRONTAGE ON BELTWAY 8• AVAILABLE JULY 1, 2026	

CONTACT BROKER FOR LEASE RATE





Location



23 Mins

to Port of Houston

4 Mins

to George Bush Intercont. Airport

29 Mins

William P. Hobby Airport

20 Mins

to Downtown Houston

40 Mins

to Barbour's Cut Terminal

25 Mins

The Woodlands



Mark Nicholas, SIOR
Executive Vice President
mark.nicholas@jll.com
+1 713 888 4024

Will Clay
Executive Vice President
will.clay@jll.com
+1 713 425 1810

Angela Watford
Associate
angela.watford@jll.com
+1 713 425 1848

Martin Gutierrez
Associate
martin.gutierrez@jll.com
+1 832 998 1870

Jones Lang LaSalle Brokerage, Inc.
4200 Westheimer Rd | Houston, TX 77027

Although information has been obtained from sources deemed reliable, JLL does not make any guarantees, warranties or representations, express or implied, as to the completeness or accuracy as to the information contained herein. Any projections, opinions, assumptions or estimates used are for example only. There may be differences between projected and actual results, and those differences may be material. JLL does not accept any liability for any loss or damage suffered by any party resulting from reliance on this information. If the recipient of this information has signed a confidentiality agreement with JLL regarding this matter, this information is subject to the terms of that agreement. ©2025 Jones Lang LaSalle Brokerage, Inc. All rights reserved.