

Property Details

Sale Price:	\$628,135
Lot Size:	1.03 AC
Zoning:	R-A

This prime property boasts approximately 206 feet of frontage along Barksdale Boulevard and extends 295 feet deep, ensuring excellent visibility and accessibility in a high-traffic corridor near Brookshire Grocery Arena. Ideally situated just 1.4 miles from Jimmy Davis Bridge, 2.5 miles from Barksdale Air Force Base, and 4.25 miles from I-20, the site offers seamless connectivity to key areas.

Sealy Real Estate Services
333 Texas Street, Suite 1050
Shreveport, LA 71101
318.222.8700
www.sealynet.com

Patrick Beauvais
Direct 318.698.1115
Mobile 318.458.2800
patrickb@sealynet.com

All information set forth in this brochure has been obtained from the owner, personal observation, or other reliable sources. Sealy Real Estate Services, LLC does not guarantee the accuracy of this information and makes no representations or warranties, expressed or implied, in this brochure. Information contained herein is subject to change without notice.

Location & Area Summary

South Bossier City is experiencing a surge in growth, driven by both residential and commercial development.

The area's strategic location, near major thoroughfares like Jimmie Davis Highway and Arthur Teague Parkway, provides easy access to Shreveport and burgeoning developments like the Live by Lowes community.

The property's proximity to Barksdale Air Force Base, the region's largest employer, further fuels this growth, attracting residents and businesses alike.

This momentum is underscored by significant investments, such as the recently announced \$270 million casino development on Barksdale Blvd, solidifying South Bossier City as a dynamic and expanding hub.

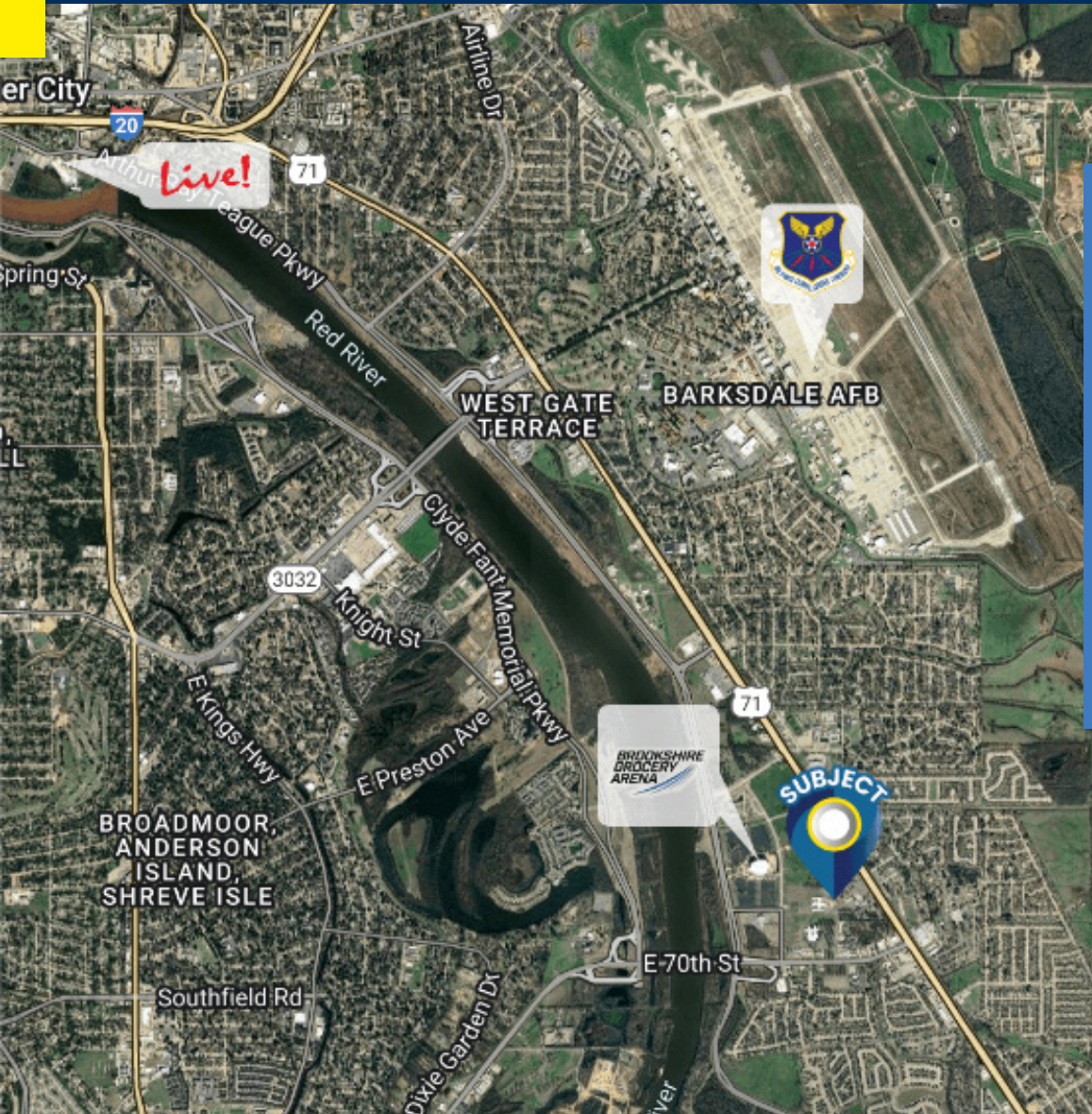


Image Credit: CDC Gaming Report



Image Credit: Barksdale Global Power Museum

Sealy Real Estate Services
333 Texas Street, Suite 1050
Shreveport, LA 71101
318.222.8700
www.sealynet.com

Patrick Beauvais
Direct 318.698.1115
Mobile 318.458.2800
patrickb@sealynet.com

All information set forth in this brochure has been obtained from the owner, personal observation, or other reliable sources. Sealy Real Estate Services, LLC does not guarantee the accuracy of this information and makes no representations or warranties, expressed or implied, in this brochure. Information contained herein is subject to change without notice.



Sealy Real Estate Services
333 Texas Street, Suite 1050
Shreveport, LA 71101
318.222.8700
www.sealynet.com

Patrick Beauvais
Direct 318.698.1115
Mobile 318.458.2800
patrickb@sealynet.com

All information set forth in this brochure has been obtained from the owner, personal observation, or other reliable sources. Sealy Real Estate Services, LLC does not guarantee the accuracy of this information and makes no representations or warranties, expressed or implied, in this brochure. Information contained herein is subject to change without notice.