

**SIERRA  
TRINITY**  
BUSINESS PARK



# ±11,167 SF Available For Sublease

6761 Sierra Court, Suite B & C | Dublin, CA

Contact Brokers

**Steve Tovani**

CA Lic. 00890879

[steve.tovani@colliers.com](mailto:steve.tovani@colliers.com)

**925 639 7002**

**Jeffry Nochimson, SIOR**

CA Lic. 00819335

[jeffry.nochimson@colliers.com](mailto:jeffry.nochimson@colliers.com)

**408 781 0349**

Professionally Managed By:



Exclusively Represented By:







## Property Features



Immediate Access to I-580 & I-680  
via Hopyard / Dougherty Road



Suites Ranging From  
1,350 SF to 30,000 SF



3.54/1,000 SF Parking Ratio



Office / Flex / Light Industrial Units



15' - 18' Clear Height



Close Proximity to  
Retail & Hotel Amenities



12 Buildings Totaling  $\pm$  223,439 SF



Grade Level & Dock-High Loading

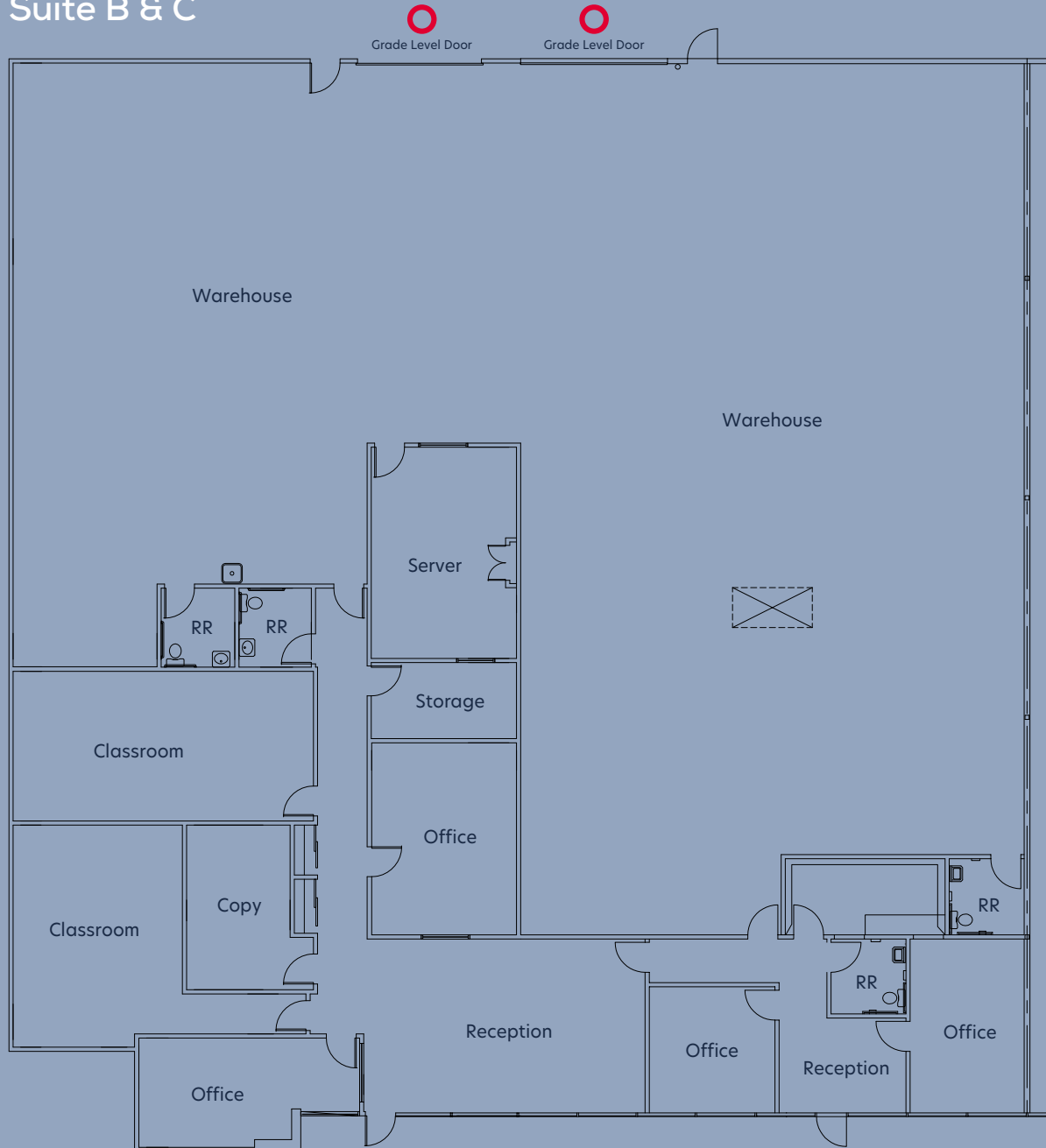


Comcast High Speed Internet

# Floor Plan

Building 6761

Suite B & C



Total SF	±11,167 SF
Warehouse	±70%
Sublease Through	11/30/2026
Loading	2 Grade Level doors

# Amenities



## Contact Brokers

**Steve Tovani**

CA Lic. 00890879

[steve.tovani@colliers.com](mailto:steve.tovani@colliers.com)

**925 639 7002**

**Jeffry Nochimson, SIOR**

CA Lic. 00819335

[jeffry.nochimson@colliers.com](mailto:jeffry.nochimson@colliers.com)

**408 781 0349**

Professionally Managed By:



Exclusively Represented By:

