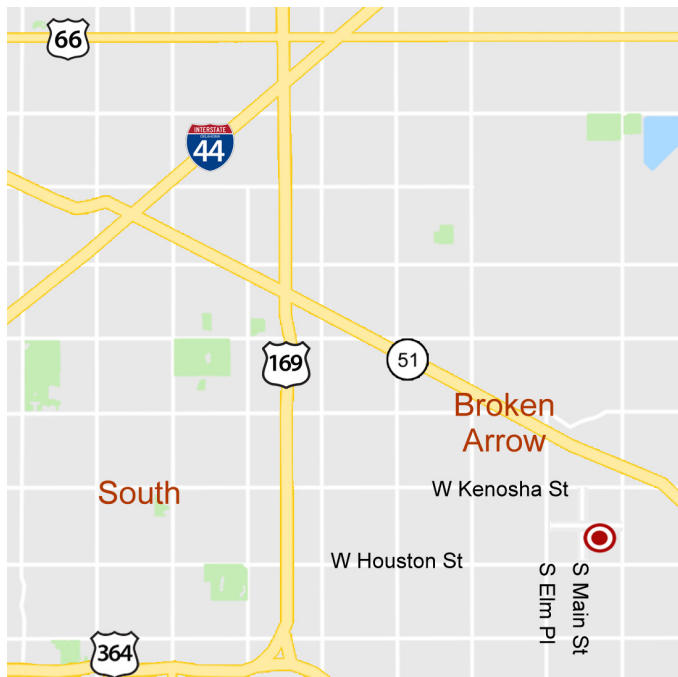


Rose District Office Space for Lease

107 E. Commercial

Broken Arrow, OK 74012

WIGGIN
PROPERTIES, LLC
41 YEARS STRONG



Rose District Space

For Lease

Available SF: 2,502 SF

Lease Rate: Negotiable

Highlights:

- Highly visible corner location on Main St in Broken Arrow's popular Rose District.
- Open-concept 2nd floor space.
- Shell condition with TI allowance.
- Zoned DM (Commercial District).

Call Grant Stewart, CCIM, or Vicki Patterson, CCIM at **918.935.2010**

gstewart@wiggprop.com | vpatterson@wiggprop.com | wiggprop.com

This material is provided for information purposes only. It is from sources believed to be reliable. However, Wiggin Properties makes no warranties or representations, expressed or implied, as to the accuracy or sufficiency of the information. It is presented subject to errors, omissions, changes or withdrawal without notice. Square footage is provided by the local County Assessor or the Owner. Photos and graphics with copyrights by Costar, Google, Wiggin Properties and independent contractors are used with permission.

Rose District Office Space for Lease

107 E. Commercial

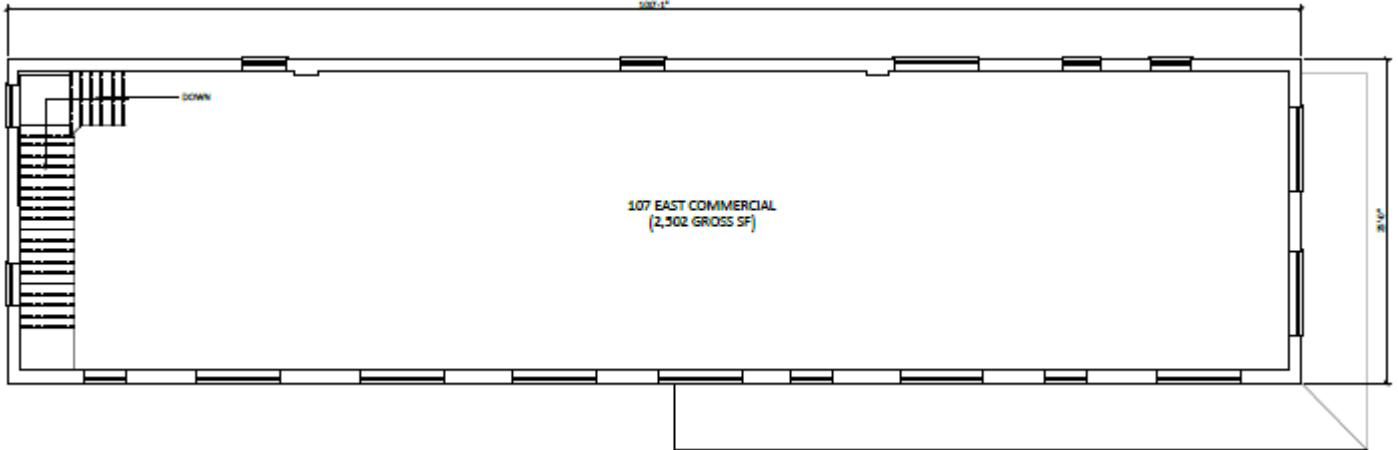
Broken Arrow, OK 74012

WIGGIN
PROPERTIES, LLC
41 YEARS STRONG



The Rose District, a collaborative public/private partnership, is downtown Broken Arrow's arts and entertainment district located on Main Street in the heart of Broken Arrow. The 100-year old historical downtown in Broken Arrow has been given new life with this collaboration.

Community leaders sought to create a downtown district that would provide a pedestrian friendly atmosphere, unique dining experiences, and boutique shopping that would draw residents and visitors alike.



Call Grant Stewart, CCIM, or Vicki Patterson, CCIM at **918.935.2010**

gstewart@wiginprop.com | vpatterson@wiginprop.com | wiginprop.com

This material is provided for information purposes only. It is from sources believed to be reliable. However, Wiggin Properties makes no warranties or representations, expressed or implied, as to the accuracy or sufficiency of the information. It is presented subject to errors, omissions, changes or withdrawal without notice. Square footage is provided by the local County Assessor or the Owner. Photos and graphics with copyrights by Costar, Google, Wiggin Properties and independent contractors are used with permission.