



# 1.5 Acres with Office for Lease

4895A E Annadale Ave, Fresno 93725

Threefold Properties

For more information, please contact:  
Luke Smith, (559) 283-3211

[office@threefoldproperties.biz](mailto:office@threefoldproperties.biz)  
P.O. Box 8298, Fresno, CA 93747

NOTE: All information provided in this document is subject to final confirmation by Lessee and contains estimates and approximated details. No guarantee, warranty or representation, either express or implied, is made with respect to such information. Rent is NOT tied to square footage and is not subject to adjustment, should the actual size be determined to be different. LESSEE IS ADVISED TO VERIFY ALL PERTINENT DETAILS PRIOR TO EXECUTING A LEASE. Terms of lease and availability are subject to change without notice.

# 4895A E Annadale Ave, Fresno CA

---

## Property Details:

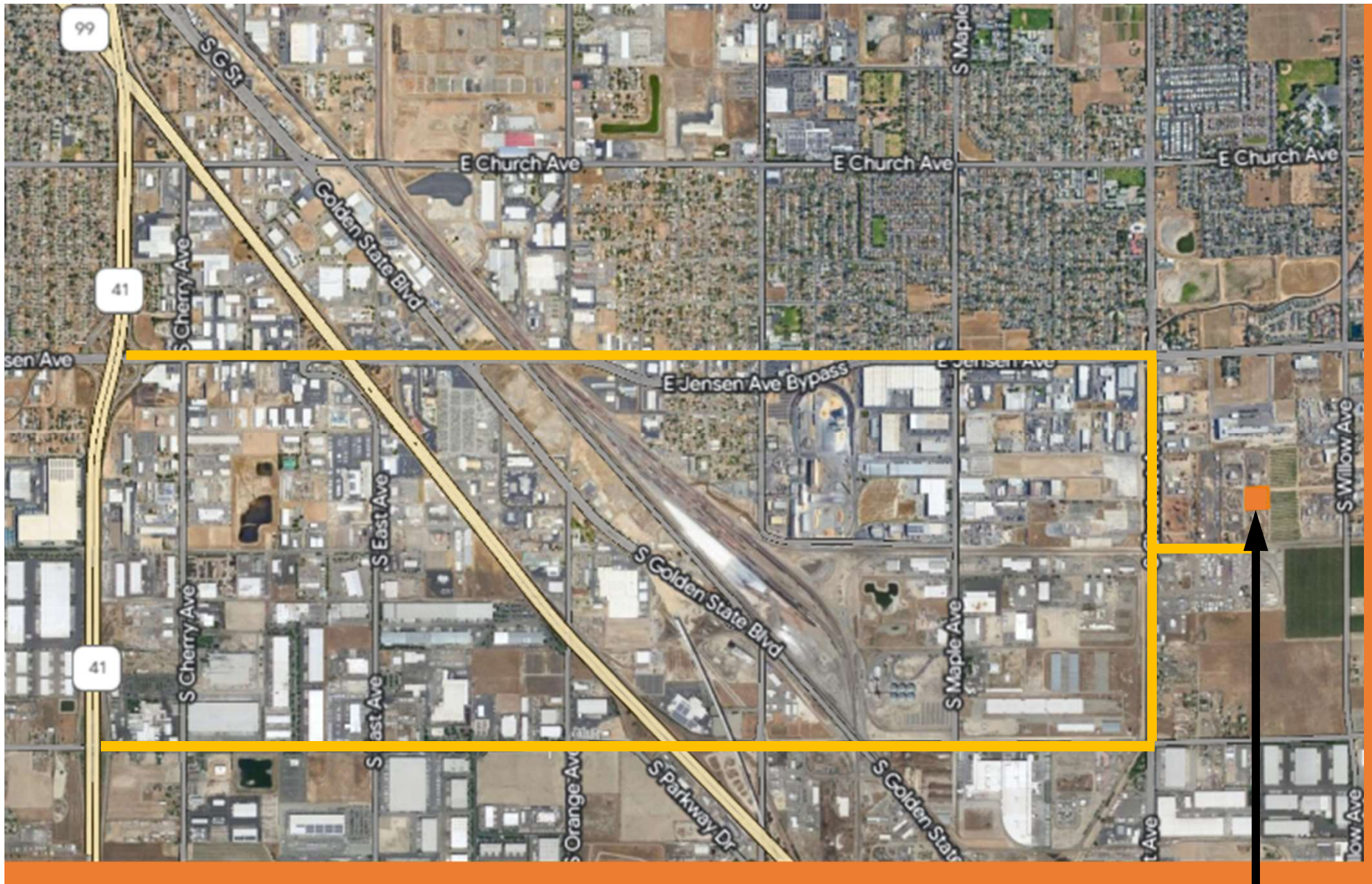
- Lot size: 1.5 Acres
- Located just off of Chestnut Avenue in South Fresno, the property has easy access to both the 99 and 41



## Office Details:

- Building size: 720 sq. ft.
- Open floor plan with bathroom, this 60 ft long office trailer can hold several clerical staff and has been recently remodeled.





For more information or to  
request a walk-through of the  
property, please contact:

Luke Smith  
(559) 283-3211

[office@threefoldproperties.biz](mailto:office@threefoldproperties.biz)

**Located just off Chestnut Avenue, the property has easy access to both  
the 99 and 41 in South Fresno**